

PRINCESS 72 MOTOR YACHT



SOLD

HIGHLIGHTS

/ FULL OPTION

/ MAINTENANCE AT
HIGHEST STANDARDS

/ PRISTINE CONDITION

/

SPECIFICATIONS

Posizione	Athens, Greece	Capacità acqua	1342 l
Anno	2012	Cabine	4+2
Lunghezza	22.35 m	Berths	8+3
Larghezza	5.49 m	Motorizzazione	Twin Caterpillar C32 Acert
Pescaggio	1.68 m	Max potenza	2 x 1622 hp
Peso	45 tonnes	Engine hours	1400 m/h
Capacità carburante	5000 l	Prezzo	1 250 000 € (ex VAT)











GALLERY





GALLERY



GALLERY



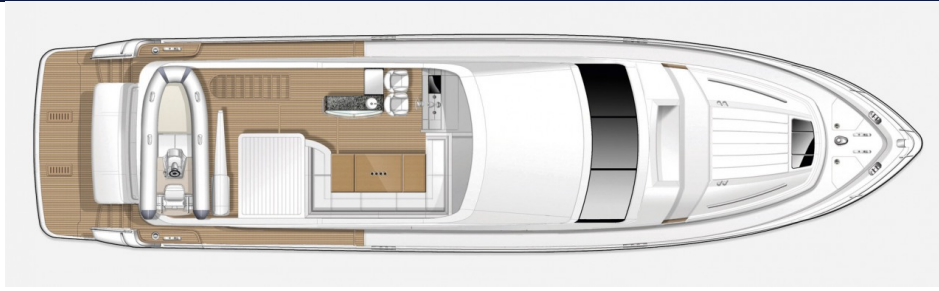
GALLERY



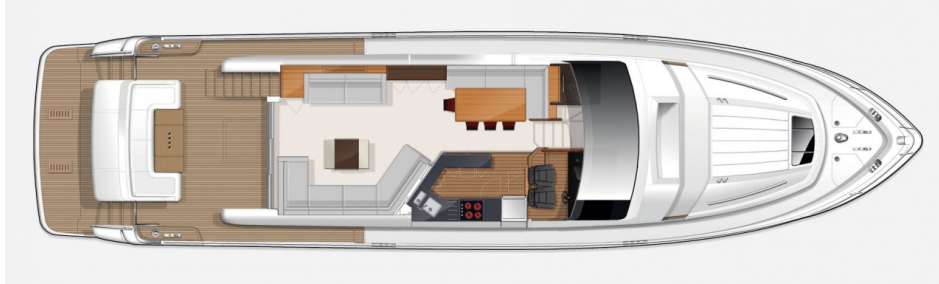




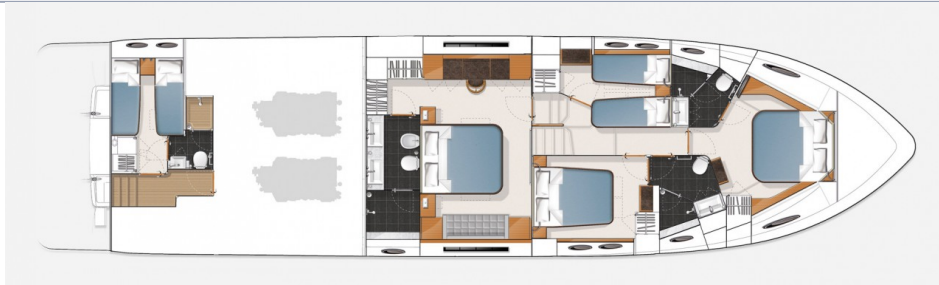
LAYOUTS



FLYBRIDGE



MAIN DECK



LOWER DECK

EQUIPMENT

Hull color: White

Teak laid side decks and flybridge

Helm console is Chocolate Brown

Raymarine navigation system instead of standard Furuno

Safe in Master Cabin

Foredeck sunbed cushions in Movida Metallic

European 220v/240v sockets

Third station control in cockpit (engine and thrusters controls)

Walnut interior wood gloss finish

Galley and helm floors in Rovere Oak V-Groove

Brown leather helm seats

European version pkotter

White vinyl windscreen covers in place of standard black mesh

Cockpit & Flybridge upholstery including helm seats and sunbed cushions - Movida Metallic

Bow and stern thrusters

Teak laid on foredeck walk through area

Stainless steel anchor in place of standard

Starboard stateroom to have optional twin berths with electric slider to enable conversion to double

Optional second generator ONAN 13,5 kW

Heated towel rail in bathrooms of master and vip cabins

Underfloor heating in bathroom in master cabin and vip cabin heads

Chain counter on both stations

BBQ NEFF Lava Brick

Raymarine GPM400 processor and radar antenna RA 1048SHD in place of standard

Raymarine G120 chartplotter on flybridge

Autopilot: display ST7002 (lower and upper helm) in place of standard

Raymarine AIS 650 + wild sensor on the top

Three video cameras (engine room, stbd stern, port stern, aft)

Eberspacher D10 heater with owtlets to cockpit seating area and flybridge stairs

Stern docking lights

MOTORIZZAZIONE

Twin Caterpillar C32 Acert (2 x 1622 hp)

PRINCESS 72 MOTOR YACHT

+33 6 40 61 88 46 

m.st.pierre@princessyachtsmonaco.com

Follow Princess Yachts Monaco

