

# PRINCESS Y85 MOTOR YACHT



## HIGHLIGHTS

---

/

## SPECIFICATIONS

Posizione	United Kingdom, Plymouth	Cabine	4+2
Lunghezza	26.2 m	Berths	8+3
Larghezza	6.3 m	Motorizzazione	MAN V12-1900
Pescaggio	1.77 m	Max potenza	2 x 1900 hp
Peso	66.5 tonnes	Velocita	31-33 †
Capacità carburante	11000 l	Prezzo	Prezzo alla richista
Capacità acqua	1500 l		

Yachts on the commission of Princess Yacht Monaco. The Company is not responsible for the accuracy of the information provided by the Shipowner (images used, yacht specifications, parameters, engine performance, legal design issues). The operating time of the engines is indicated at the time of preparation of the information and may change during further operation. The need for an inspection remains at the discretion of the Buyer. Exact parameters and characteristics can be specified in the contract of sale. Additional information is available from the manager on request.

# EQUIPMENT

## DECK FITTINGS

Teak-laid transom platform, cockpit deck, flybridge, flybridge stairway, side decks and foredeck walkthrough

Twin self-stowing 80kg/176lb and 50kg/110lbs Delta anchors with 100m and 70m of chain respectively

Twin reversible hydraulic anchor winches with foredeck, main helm and flybridge controls

Twin electric sternline mooring winches

Stainless steel cleats, fairleads and handrails

Foredeck seating and sunbathing area

Storage lockers for rope, fenders and foredeck sunbed cushions

Telephone connection point

Stern docking lights

LED deck level lighting

Freshwater deck/anchor wash

## COCKPIT

U-shaped seating with teak folding table

Twin transom gates leading to bathing platform with electro-hydraulic raise/lower mechanism, foldaway swimming ladder, hot and cold shower

Door leading to crew quarters and engine room from side deck

Transom doors giving direct access to lazarette and crew area

Remote control 4.4m telescopic passerelle with folding handrail

Cockpit cover

## FLYBRIDGE

Helm position with powered raise/lower console, repeat navigation equipment including radar/ chartplotter and engine instrumentation

Twin adjustable helm seats

U-shaped seating area with folding teak table

Twin forward facing L-shaped seating

Sunpad with storage below (option for built-in spa bath)

Naim audio system with waterproof speakers (2)

Wetbar including sink with electric barbecue and drawer refrigerator

Optional crane (550 kg SWL)

Life raft storage

Console and seat covers

## WHEELHOUSE

Twin helm seats with electric adjustment for helmsman

U-shaped seating with table to port

Helmsman's door to side deck and electric opening window to port

Full engine instrumentation including fuel gauges, exhaust temperature, fuel contamination alarms, rudder position indicator

Navigation system including colour radar, GPS and chartplotter (2 displays), VHF/RT, speed and distance log, echo sounder with alarm, autopilot and high speed magnetic compass

Controls for bow thruster, windscreen wipers, bilge pump and trim tabs (with indicator)

Intercom to flybridge

Automatic foghorn with loudhailer

Chart storage

24v and 240v control panel

Red night lighting

Toughened glass screen (clear for night vision)

## DECK SALOON

Twin L-shaped seating area with two-seater sofa and coffee table

Entertainment centre incorporating 55" UHD LED TV on electric raise/lower mechanism with Naim audio system and ceiling mounted speakers (4)

Sideboard unit with bottle and glass storage and refrigerator

Dining area (8 people) with full-height panoramic window

Day head

## GALLEY

4-zone induction hob

Combination microwave/convection oven with grill

Twin stainless steel sinks with mixer tap

Full-height refrigerator/deep freeze

Icemaker

Dishwasher

Storage lockers, cupboards and drawers

Access door to side deck

Electrically operated sliding screen to fully enclose galley

## ACCOMMODATION

All cabins and bathrooms feature opening portholes and air conditioning outlets

All cabins feature 220/240v power points

All mattresses are pocket sprung

All bathrooms feature full shower stalls, electric freshwater toilets, extractor fan and 240v shaver points

#### OWNERS STATEROOM

Large double bed with bedside tables and drawers below

Dressing area with wardrobes with hanging and drawer storage

Dressing table with chair

Occasional table with seats fore and aft

Built-in safe

55" UHD LED TV with Naim audio system with speakers (2) and subwoofer

En suite bathroom with heated towel rail

#### FORWARD STATEROOM

Large double bed with drawers below

Walk-in wardrobe with shelves

Dressing table with stool

32" HD LED TV

Naim audio system with CD/DVD paired with ceiling mounted speakers (2)

En suite bathroom

#### STARBOARD GUEST CABIN

Two single beds with drawers below (with the option of powered conversion to double)

Wardrobe with shelves

Storage lockers

Bedside table with storage

Ensuite bathroom

#### PORT GUEST CABIN

Large double bed with drawers below

Wardrobe with shelves

Dressing table with stool

Storage lockers

Bedside tables with storage

En suite bathroom

#### LOWER ACCOMMODATION LOBBY

The lobby area has a full-height storage cupboard with the option of fitting an additional washer/dryer

#### CREW QUARTERS

Captain's cabin with single bed, wardrobe and storage lockers

Crew cabin with two single beds, wardrobe and storage lockers

Bathroom with separate stall shower, electric freshwater toilet and washbasin

Crew mess with microwave oven, sink, refrigerator and washing machine with separate dryer

Access to engine room

#### INTERIOR FINISH

Furniture in Rovere Oak with satin or high gloss finish. Walnut or Alba Oak available as an option

All guest bathroom worktops and floors in choice of marble, granite or quartz

Galley worktops in choice of granite or quartz

Choice of high quality carpet and upholstery fabric from extensive range

Curtains, blinds or sunscreens to all windows and portholes

Timber-laid galley and wheelhouse floors

#### POWER AND DRIVE SYSTEMS

5-bladed propellers in nickel aluminium bronze

Bow thruster (350kgf/771lbf)

Power-assisted electro-hydraulic steering system with hydraulic back-up

Electronic engine and gear shift control system

Dripless shaft seals

Engine room extractor fan with electronic time delay

#### ELECTRICAL SYSTEM

##### **24 Volt:**

2 x heavy duty batteries for engine starting

6 x heavy duty auxiliary batteries

2 x 60 amp battery charger charges both banks of batteries via an automatic switch charging system

Remote battery master switches with control switch at main panel

LED lighting throughout

##### **220/240 Volt:**

27kW generator in own sound shield with water cooled specially silenced exhaust

2 x 63 amp shore support inlet

Earth leakage safety trip, polarity check system, circuit breaker on all circuits

Power points in all areas

#### FUEL SYSTEM

Twin fuel tanks (in NS8 marine grade alloy) with interconnection system giving 2420 gal/2907 US gal/11000l

Fuel fillers on port and starboard side decks

High capacity duplex fuel filters/water traps with audible and visual fuel contamination warning system

---

Remote fuel cocks in cockpit locker

---

#### WATER SYSTEM

285 gal/342 US gal/1295l plus 45 gal/54 US gal/205l hot water calorifier, heated by engines and 240v immersion heater

---

Water level gauge

---

Electric freshwater WC system with 132 gal/158 US Gal/600l holding tank

---

#### AIR CONDITIONING

204,000Btu chilled water system with outlets in all accommodation areas and incorporating reverse cycle heating with linked windscreen de-mist system. Suitable for tropical conditions (40°C)

---

#### FIRE EXTINGUISHERS

Automatic/manual override fire extinguishers in engine room with warning system at both helm positions and incorporating engine air vent closure system

---

Hand-operated fire extinguishers in all cabins, galley, crew and lower helm

---

#### BILGE PUMPS

Automatic electric bilge pumps

---

High capacity manual bilge pumps with valve system and suction points in same areas

---

#### OTHER ITEMS SUPPLIED AS STANDARD

Set of cutlery, crockery and glasses (8)

---

Set of towels (8 large, 8 small)

---

Ensign staff

---

Fenders (8) and warps (4)

---

First aid kit

---

Set of manuals

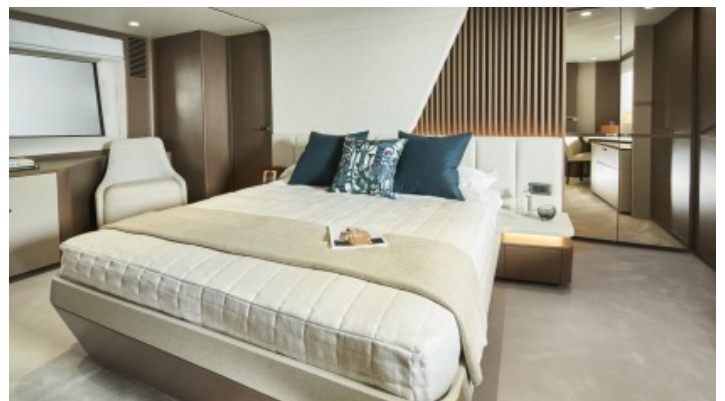
---

## EXTERIOR

---



# INTERIOR



# LAYOUTS

---



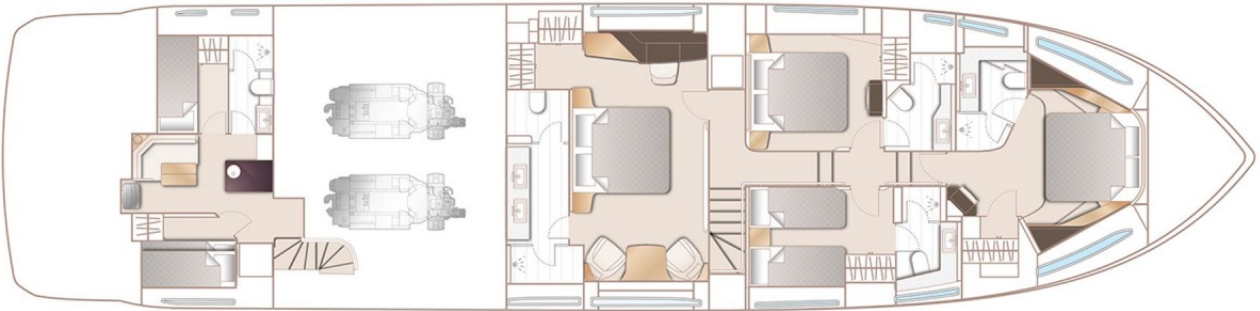
## FLYBRIDGE

---



## MAIN DECK

---



## LOWER DECK

---