

## PRINCESS Y88



BROKERAGE

### SPECIFICATIONS

Posizione	Italy, Liguria	Capacità acqua	1500 l
Anno	2019	Cabine	4+2
Lunghezza	26.82 m	Motorizzazione	Caterpillar C32A 1925
Larghezza	6.3 m	Max potenza	2 x 1925 hp
Pescaggio	1.78 m	Engine hours	182 m/h
Capacità carburante	11000 l	Prezzo	5 276 870 € (ex VAT)

## EQUIPMENT

---

- Hull colour: White (with dark grey water line, black antifouling, hull & bathing platform fendering is white with stainless steel insert)
- Interior furniture: Alba Oak interior wood satin finish
- European version plotter
- Perso Avorio granite galley worktop
- Bianco Gioia marble worktops and floors in all bathrooms
- International VHF
- Continental 200v/240v sockets
- TRAC Hydraulic system
- Fold down balcony (electro-hydraulic powered) with sliding doors to starboard side of saloon/dining area
- Spa bath on flybridge
- Stern garage for stowage of wetbike or jet-ski including launch system
- Stainless steel Anchors in place of standard (1 x 80kg and 1x50kg)
- Freshwater maker (190 litres/hour)
- Underwater transom lights (4 LUMISHORE SMX52 White)
- Icemaker fitted in flybridge wetbar
- Port cabin 22" LED TV with Fusion MS-AV755 Radio/DVD/MP3 player
- Exterior upgrade Flybridge linked to the saloon audio system Cockpit waterproof speakers linked to the flybridge audio system
- Multifunction digital controller for AV equipment
- Foredeck seating walk-through area-waterproof speakers linked to the flybridge audio system, with separate local control
- KVH T8 Tracvision satellite TV antenna system in 89cm dome
- 89cm Dummy dome
- Satellite TV decoder in Saloon, Master Stateroom, Forward Port and Starboard cabins
- Raymarine 12kw SHD 48" digital colour open array scanner in place of standard 4kw
- Additional Raymarine e165 multifunction 15.4" brilliant colour display at upper helm
- Hydraulically powered bimini with overhead dimmable LED lighting and switched from flybridge console
- Bimini Top to be in two tone Subrella with linen underside
- Foredeck sun awning with carbon fibre poles - White
- Fit reticulated foam to all standard exterior cockpit and flybridge seating/sunpads in place of standard
- Fit reticulated foam to foredeck seating/sunpads in place of standard
- 1kg hull Superstructure gelcoat
- Spare set of anodes for TRAC stabiliser fins
- Compass adjuster to swing both compasses
- Fit reticulated foam to all standard exterior cockpit and flybridge seating/sunpads cushions in place of standard
- Fit reticulated foam to foredeck seating/sunpads in place of standard
- Fit engine driven bilge pump
- Galley wheelhouse and upper lobby floors to be in random Walnut in place of standard
- Saloon/Dining area floor to be in Random Walnut
- Fit putty leather to door handles and handrails in place of standard
- On flybridge supply and fit 2 x dual flybridge helm seats Reduced L shaped seating on flybridge port and starboard forward end
- Preparation for later fitting of the flybridge crane
- Supply removable coffee table for foredeck
- Fit teak decking with grey caulking in place of standard black
- Fit additional fridge in dining area
- Fit dimmer switch to lower passageway lights
- Supply and fit 1 additional backup freshwater pump
- Supply and fit strip LED lighting to flybridge cockpit/transom steps with extended teak nosings
- Galley doors to be in boat timber in place of standard
- Furniture starboard aft entertainment unit worktop panel Sapange Bronze
- Fit teak flooring in crew mess in place of standard oak
- Mosaic tiles in Master Stateroom Forward Port and Starboard cabin bathrooms to be Siminetti Hexagonal Mother of Pearl Bianco
- Master staterooms furniture entertainment unit to be in Alba Oak timer opposed to Macassar ebony
- Galley wheelhouse upper lobby saloon and dining area (no inlays) to be random walnut timber laid running fore and aft in place of standard
- Fit 75MY style glass dining table adapted in size to accommodate 8 place settings with fixed base
- Additional charge in respect of Platinum Leather bedhead, bed surrounds , dressing stools , small rectangular quilted blankets, Jacaranda carpet
- Retrofit: plug in carbon pole shower to swimming platform on starboard side
- Retrofit: plug in carbon pole shower to the flybridge on the port side aft of sunbed
- Retrofit: fit additional batter charger inverter combination unit with 6 x AGM batteries and 9 USB sockets
- Supply and fit coffee table in walnut satin with Calacatta Oro marble (gloss finish) top
- Additions for fabrics
- Providing sea securing of the saloon sofas
- Replace Brown Fabric on wall panel in day head with light fabric
- Replace Roman Blinds in Master Stateroom
- Replace the bulbs in wall lamps throughout the all cabins
- Replace the snake lamps in port guest cabin with wall lamps supplied in all cabins
- Supply the data cables from main engines to upper helm screen in order to have all the readings from engines available for monitoring
- Supply additional CCTV camera on aft of the canopy for viewing of the area around stern

## MOTORIZZAZIONE

---

Caterpillar C32A 1925 (2 x 1925 HP)

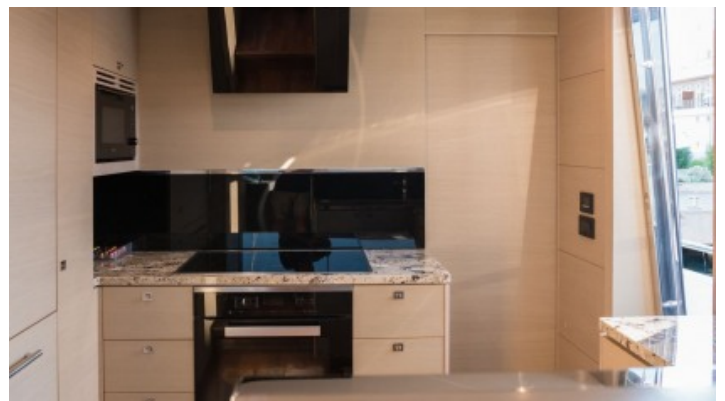
---

Yachts on the commission of Princess Yacht Monaco. The Company is not responsible for the accuracy of the information provided by the Shipowner (images used, yacht specifications, parameters, engine performance, legal design issues). The operating time of the engines is indicated at the time of preparation of the information and may change during further operation. The need for an inspection remains at the discretion of the Buyer. Exact parameters and characteristics can be specified in the contract of sale. Additional information is available from the manager on request.

## EXTERIOR

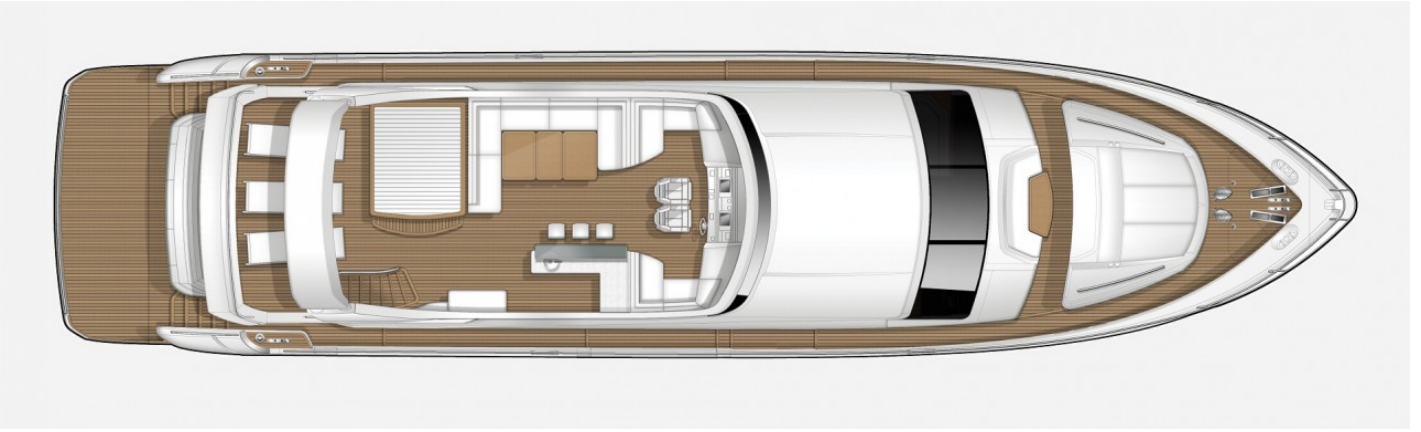


# INTERIOR



## LAYOUTS

---



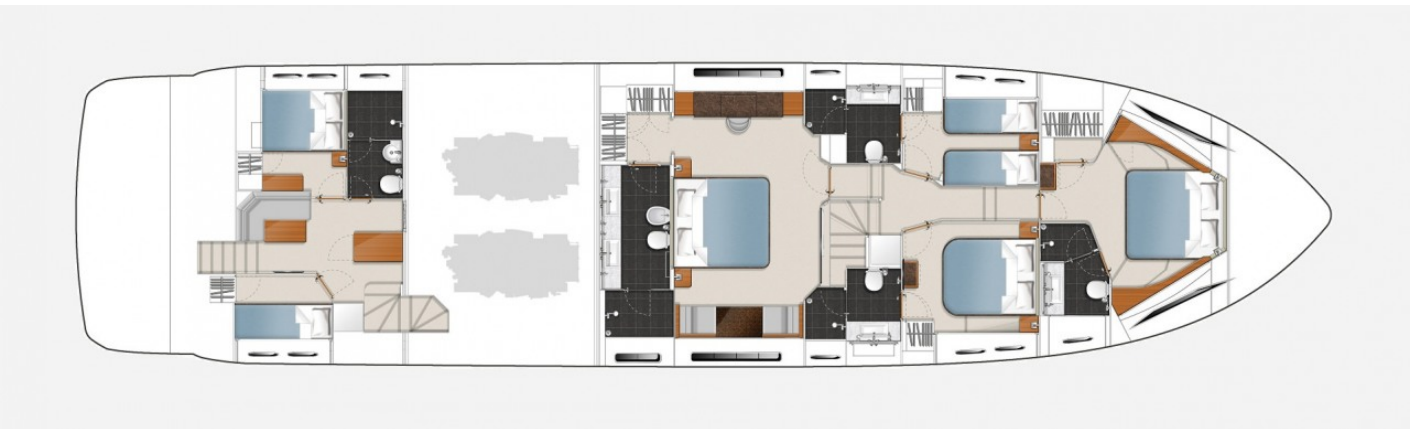
FLYBRIDGE

---



MAIN DECK

---



LOWER DECK

---