

PRINCESS 88



HIGHLIGHTS

- / SATIN WALNUT INTERIORS
- / FENDI UPHOLSTERY AND FURNITURE
- / GRANITE & MARBLE WORKTOPS
- / MAN M94 (2X1948HP) ENGINES
- / ZERO SPEED FIN STABILISERS
- / TWIN GENERATORS
- / WATERMAKER 190 L/H
- / FLY CRANE
- / MAIN DECK SIDE FOLDABLE BALCONY
- / UPGRADED NAV EQUIPMENT
- / FLIR NIGHT VISION
- / 2X SEADOO SPARK JETS
- / WILLIAMS SPORTJET 460 TENDER
- / JACUZZI ON THE FLY
- / ADDITIONAL SOUND PROOFING IN LOWER DECK

СПЕЦИФИКАЦИИ

Местоположение	Turkey, Istanbul	Запас воды	1500 л
Год	2018	Каюты	3
Длина	26.82 м	Число спальных мест	6
Ширина	6.30 м	Двигатели	MTU 12V
Осадка	1.70 м	Макс. мощность	2 x 2000 лс
Водоизмещение	67 tonnes	Наработка двигателей	120 m/h
Запас топлива	8400 л	Цена	5 700 000 € (ex VAT)

Yachts on the commission of Princess Yacht Monaco. The Company is not responsible for the accuracy of the information provided by the Shipowner (images used, yacht specifications, parameters, engine performance, legal design issues). The operating time of the engines is indicated at the time of preparation of the information and may change during further operation. The need for an inspection remains at the discretion of the Buyer. Exact parameters and characteristics can be specified in the contract of sale. Additional information is available from the manager on request.

ОБОРУДОВАНИЕ

Walnut interior wood Gloss finish (galley, wheelhouse and upper lobby floors in walnut)
Teak laid all exterior decks
Dinghy chocks on bathing platform
Bathing platform with electro-hydraulic powered drive
Fully equipped wet bar on the flibridge
Vacuum toilets system
Navigation incorporates: Raymarine Radar/Chartplotter/GPS with Raymarine Radar/Chartplotter/GPS with two GS165 (15.4") brilliant 1 x Boening AHD-1215G — The Boening screen will be for Engine data and control of the monitoring system, Raymarine e165 (15.4") display is fitted at the upper helm. The standard radar is a 4kw SHD 48" digital colour open array scanner.
Raymarine chart plotters have embedded charts which cover European area
International VHF Raymarine 260 Dual Station
LAYOUT incorporated 3 stateroom plus 1 guest cabin accommodation consists of owners, starboard and forward staterooms and a twin-bedded guest cabin to port
Two ONAN 27kW (220v/240v) diesel generators are fitted
Double Electrical Continental 220v/240v sockets
GRP Flybridge hardtop featuring electric opening section in soft fabric (including lighting)
TRAC Hydraulic system (consisting of separate engine driven hydraulic pumps on each engine with cross connections allowing any system to be supplied with hydraulic power from either engine) and incorporating
TRAC Star 9X Fin stabilizer system and inline Parker silencer. A hydraulic sternthruster is fitted as well as hydraulic bowthruster and anchor windlass
Fold down balcony (electro-hydraulically powered) with sliding doors to starboard side of saloon/dining area
Flybridge crane (550kg)
Prepare stowage for jet RIB on aft flybridge (includes sunbed facing aft, no rails and gate between the flybridge stair and crane area)
Port cabin beds to convert to double with electrically operated sliding mechanism
Cockpit bar unit (including top entry coolbox, sink and storage cupboard)
Side entry gates to aft port & starboard side decks in addition to standard passerelle
Icemaker fitted in flybridge wetbar (in addition to standard icemaker in saloon)
Freshwater maker (190 litres/hour)
Underwater transom lights (4 LUMISHORE SMX95Blue)
Underfloor heating in bathrooms (5)

To supply and fit a Luxury 88" TV Mirror Screen – Ultra HD 4K, Smart TV, 1300 Hz, 3 x HDMI, YUV, Ethernet, 2 x USB, Tailor-made Frame less Model mounted on the forward dining area bulkhead, Mirror will have a 50mm border and will be backed on Ultra leather Original 291-3609
To supply and fit an Anthem MRX 720 7.2 Home theatre receiver c/w Keff speakers. this system will provide top quality sound and give the option to display the same picture on both TV`s
Port cabin — 22" LED TV with Fusion MS-AV750 Radio/DVD/MP3 player
Port cabin Fusion stereo upgrade to Harman Kardon 2.1
AUDIO SYSTEM UPGRADE (3 STATEROOM & 1 GUEST CABIN LAYOUT): Forward and Starboard Staterooms — Harman Kardon 2.1Bluray System (with Bluetooth connectivity) and KEF speakers in each cabin in place of Fusion MS-AV750 Radio/DVD/MP3
Exterior upgrade Flybridge – linked to the saloon audio system Cockpit – waterproof speakers linked to the flybridge audio system, with separate local control
Crew mess area — 28" LED TV with Fusion MS-AV 750 Radio/DVD/MP3 player
Foredeck seating walk-through area — waterproof speakers linked to the flybridge audio system, with separate local control
Multifunction digital controller for A/V equipment in Saloon (Harmony touch with charging dock and 220v power point)
KVH Tracvision (M9) satellite TV system
M9 dummy dome
Marine broadband router acting as a single control point for Satphone (when selected), 3G/4G services and marine Wi-Fi networks. Easily accessed and controlled via a web browser on any connected device, the router allows the owner and/or crew to control and restrict internet connections and access to the Satphone.
Raymarine 12kw SHD 48" digital colour open array scanner in place of standard 4kw
Raymarine AIS Class B transponder interfaced with chartplotter & with 8ft (2.4m) aerial
Additional Raymarine e165 multifunction 15.4" brilliant colour display at upper helm
Foredeck sun awning
Aft flybridge sun awning (with hardtop only)
Barrel heater array to the engine room chiller assembly
Infra-red camera FLIR M625 CS c/w a control at both helms
Fit recessed Docking lights to the bow, c/w white covers and with switching on both helm stations
To supply and fit additional CCTV cameras on sides of superstructure, looking forward and aft, plus an additional rotational camera on the flybridge
To supply and fit a door between the helm and galley and a bulkhead to enclose the area, c/w a fixed window and Venetian

blind
Installation of owner's supplied Russian VHF and Signal Lights
Supply and fit anchor chain counters to both helms
Supply and fit a larger overall sun cover for the lower helm
Exchange all toilet controls for the single button panels
To Supply and fit a wired remote control for the engines and Thrusters
To supply a portable firefighting system comprising of a Diesel driven pump with a 10mtr inlet hose and 30mtr outlet hose, system to be stored in transom locker when not in use
To supply and fit stainless steel deck sockets and eyelets, Teak chocks and stainless steel ratchet straps for fitting of the Two Jet ski BRP SeaDoo Spark on the fly bridge
Supply and install additional sound proofing to the engine room (bulkhead between engine room and master stateroom bathroom)
Supply and fit additional sound proofing in master stateroom, to include the bulkhead between bathroom and cabin, forward bulkhead, additional insulation of ceiling panels, additional insulation of floor
Supply and fit a waterproof TV to Bar wing on STBD side. Due to poor access to radar arch and walkway restriction, the suggested option for the TV would be to mount on a stainless steel rotating post on the end of the wet bar, this can be locked into position or removed when not in use
supplied satellite decoder (each) x 8pc
Modify space under the lower helm in order to place a printer on the shelf in the space behind the panel
Supply and fit a double socket above the middle of the chart table, Supply and fit a double socket behind the sofa in the helm, Supply and fit a double socket below BONING control panel in helm, Supply and fit a double socket above bedside table in captain's cabin
Supply additional Down lights in the helm and galley where possible 2 x additional in Helm and 4 x additional in Galley
To supply and fit a saltwater deck wash c/w hose in the fore deck locker
Supply 120m of 12mm anchor chain in place of the standard 100m
Supply and fit a Miele dual zone wine cooler into the lobby of the main deck
Supply and fit a combination washer/dryer in the lower deck lobby with leaving one compartment for storage of linen
Supply and fit special vibration/noise absorbing supports for generators in order to reduce transfer of noise through the GRP structure
Supply and fit a Factory standard Hot tub to the Flybridge, to include the fitting of an additional hot water heater and water pump
Supply an additional amplifier for the Bose speakers on the Flybridge and in Cockpit
Supply and fit NAVTEX and integrate with the navigation system

Supply a Lava Brick BBQ in place of standard
Supply and fit waterproof sockets on the Flybridge (2 pc)
To supply a cockpit weatherproof cover, c/w mosquito screens
Supply and fit a cooking hob with recirculating extractor in the crew mess
To supply and fit an additional bunk to the captain's cabin, bunk will be full length and have its own reading light
Tender Williams Sportjet 460 – as per Sales Order Ref No 25071 including delivery to Plymouth
To supply and fit Garmin GPSMAP722 7" MFD at lower helm, connected with a Garmin Panoptix forward looking sonar S/S. The Garmin app allows mirroring of the MFD image so this could be utilised when driving from upper helm
Supply and fit private screen mesh fitted on aft cockpit in place of the cockpit cover
To supply and fit removable rails to the aft of the flybridge, rails will be individual polished stainless steel hoops located into fixed recessed pots
To replace the 3 x 240v air conditioning fan units fitted as standard in the saloon with 24v DC fan units
To replace the 2 x 240v air conditioning fan units fitted as standard in the Master Stateroom with 24v DC fan units
Additional soundproof insolation at the all lower accommodation cabins and at the passageway
To supply and fit a 240v socket and USB to the Saloon sofa forward corner unit
To supply and fit yacht name "Sandra-Star" in stainless still with RGB backlight
To fit T/T vinyl stickers to the Williams tender and Jet skis
Non slippery varnish to cover wooden floors at the saloon, low helm station and Galley areas
To Install an additional skin fitting and valve for later fitting of a freshwater filtration system
To supply and fit a stainless steel adjustable pan guard for the main galley hob
To supply and fit swivel for both anchors
To supply and fit a small portable compressor for storing in the transom locker, to enable inflation of fenders when required, c/w a waterproof 230v socket fitted in locker, Features: Oil-free 1-cylinder piston compressor with belt drive, 6 L Compression tank
To supply Leather fender hooks for securing to the Bulwarks Qty: 10
To supply Princess fender socks c/w the boat name embroidered Qty: 10
To supply and fit an A4 digital safe in the forward cabin wardrobe and crew cabin
Supply and fit an independent Webasto heating system with outlets in the Cockpit and Fly bridge

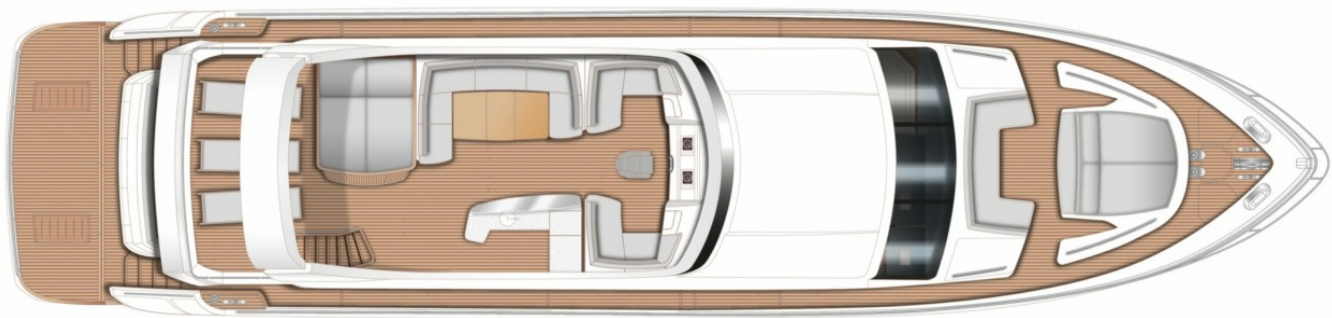
Supply and fit a Camper style cover with plastic windows, removable zipped mosquito screens on windows and entrance door in aft part to completely enclose the area under Hard Top
To supply and fit teak chocks for the tender at the bathing platform, launch the tender on the water, commissioning, fitting to the bathing platform
To Supply 4 x transom swim ladder anodes
Supply x2 25m x 32amp shore support leads
To supply a 10 Micron FBO10 Fuel/water Seperator element for the engines
Supply Separ 00510 fuel pre filter elements for the generators (4)
To supply x 10, 24v-6W LED Headlining down lights
To supply 15x, LED Deck lights
To supply 10x white LED step lights
To supply a spare shower extraction fan/light

UV steriliser and a set of filters to filter the domestic water taken from the main water tank, this system consists of a 5 micron filter, Carbon block filter and a carbon granular filter and filters the whole boats water supply
Back-up water pump, the pump will be fitted in conjunction with the factory fitted pump, will be separately switched and selected by using 3 way valves
Raymarine GS95 Multi-function display in the crew mess area, this will allow Raymarine wifi in the crew cabins
2up 900 HO IBR Seadoo Spark Trixx Jetski
Stainless Steel Anchors in place of standard (1 x 80kg and 1x 50kg)
Mirrored wide angle night view CCTV Camera fitted on the transom to be able to see aft platform
Additional 12V waterproof socket on flybridge





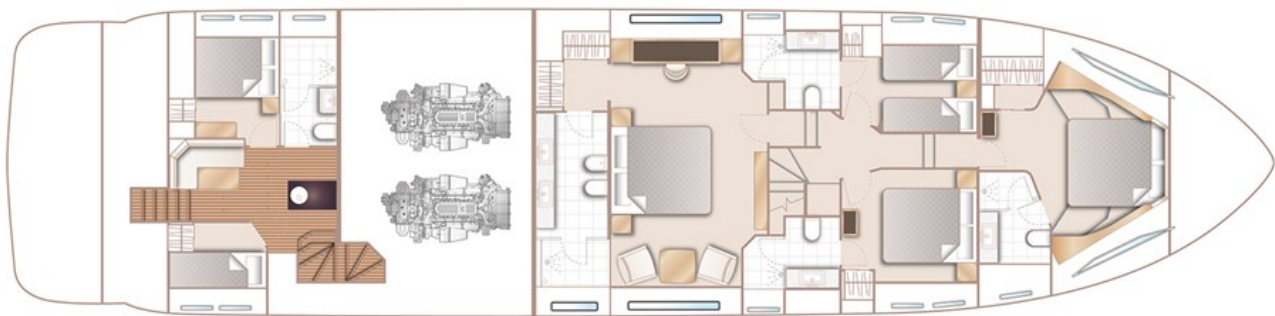
LAYOUTS



FLYBRIDGE



MAIN DECK



LOWER DECK

Yachts on the commission of Princess Yacht Monaco. The Company is not responsible for the accuracy of the information provided by the Shipowner (images used, yacht specifications, parameters, engine performance, legal design issues). The operating time of the engines is indicated at the time of preparation of the information and may change during further operation. The need for an inspection remains at the discretion of the Buyer. Exact parameters and characteristics can be specified in the contract of sale. Additional information is available from the manager on request.