

## PRINCESS S72 (038)



### СПЕЦИФИКАЦИИ

Местоположение	France, Antibes
Год	2017
Длина	22.55 м
Ширина	5.38 м
Осадка	1.48 м
Запас топлива	4800 л

Запас воды	782 л
Двигатели	MAN V12-1800
Макс. мощность	2 x 1800 лс
Макс. скорость	38-40 +
Наработка двигателей	400 м/ч
Цена	1 950 000 € (inc VAT)

# ОБОРУДОВАНИЕ

---

- Hull color: White
- Walnut interior wood Gloss finish
- Helm console is Charcoal with helm seats in Firenze Black leather with Firenze Black perforated leather panelling and contrast stitching
- Teak laid flybridge
- Electrical Continental 220v/240v sockets
- Trac TRAC Star 7.5X fin stabilization system
- Hydraulic system consisting of separate engine driven hydraulic pumps on each engine with cross connections allowing any system to be supplied with hydraulic power from either engine. Includes hydraulic windlass and 240 KgF hydraulic bowthruster with proportional speed control in place of standard
- Hydraulic stern thruster (variable speed 300Kgf)
- Third station engine and thruster control in cockpit
- Owners stateroom — Harman Kardon 2.1Blu-ray system (with Bluetooth connectivity) and KEF speakers in place of Fusion MS-AV700i
- Raymarine AIS Class B transponder interfaced with chartplotter & with 8ft (2.4m) aerial
- Fishfinder
- ONAN 27Kw/50Hz generator fitted in place of standard (recommended if Fin or Gyro stabilisers are fitted) Underfloor heating in Master Stateroom, Forward, & Starboard bathrooms
- Mosquito screens for portlights
- All exterior covers are in nonstandard color in pace of standard white
- Fit teak with grey caulking in bathrooms on floors in place of standard finish
- Vinyl wrapping of the hull (from bulwark to knuckle line) in grey 3M (I080-M230 Matte Grey Aluminium (this includes full post curing of the hull)
- All exterior covers are in grey sanbrella
- Supply 2 (TWO) Dedon Seax Folding Director’s Armchair with frame in black finish, textile finish in Sail Taupe and wooden arms
- Electrically operated sun awning (White canvas as supplier has no optional colors) to aft end of cockpit overhang (can be

- extended to within 80cm of aft end of sunbed)
- Fit Lava Brick BBQ on sportbridge in place of standard
  - Fit cooking panel in cockpit (two burns) in place of standard BBQ
  - Saloon floor to be in walnut wood finish (without carpet inlay)
  - Fit stainless steel fridge in saloon area
  - Fit icemaker in saloon area
  - Fit nonstandard galley work top in Shell Brown marble
  - Manual Bimini – top with two tone sunbrella cover in Grey color
  - COMBI/BIDET TOILET in Master-cabin toilet
  - Additional shelves for crockery in cockpit bar in order to allocate standard set of crockery supplied with the yacht: To fit 2 x plastic shelves with acrylic pegs to accommodate the standard crockery
  - Marine router for use of the wi-fi from marina — Marine router acting as a single control point for Satphone (when selected), 3G/4G services and marine Wi-Fi networks
  - Accessories and cutleries as per Fattura Pro-forma Atep #0369/2016 dd 14.09.2016
  - Jacuranda Santushti Wheat, bound rug with estimated the size 2365mm x 2000mm (will be delivered to Antibes)
  - Zodiac Xtrem B packed 8 man life raft Z31068
  - Vinyl name (Alexandra), Quotation is for a name in standard font consisting of 9 letters
  - Electronic charts: To supply and fit platinum Chart software Raymarine e127 covering western Med (including area from Gibraltar to Adriatic)
  - Air conditioning: To fit Dometic whisper control boxes to cabin and saloon air handlers to reduce motor noise (buzzing) from fans (x 5)
  - Water filters: To supply and fit a UV steriliser and 3 x 10" water filters (5 Micron, 20 micron and a carbon filter) system will be fitted between the water tank and the water pump to ensure whole boat domestic water system is filtered
  - Kartina TV system to the saloon TV to allow viewing of Russian TV through the internet

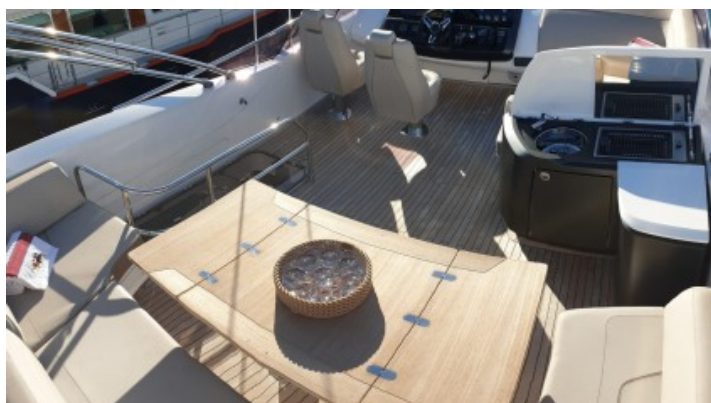
# ДВИГАТЕЛИ

---

MAN V12-1800 (2 x 1800 h.p.) diesel engines

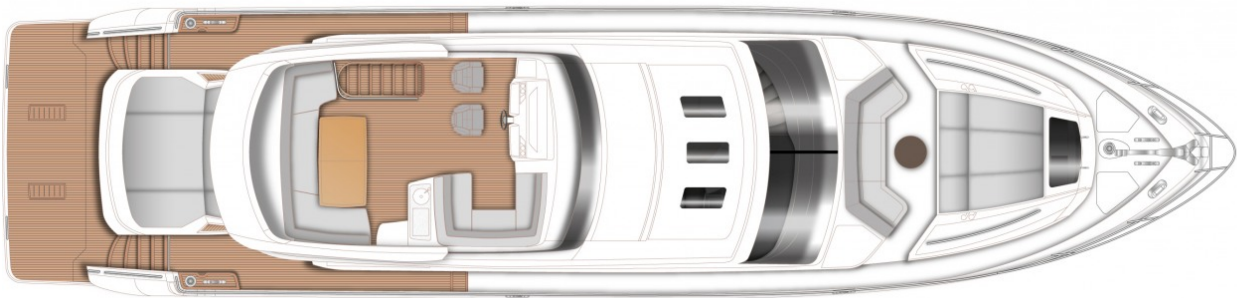






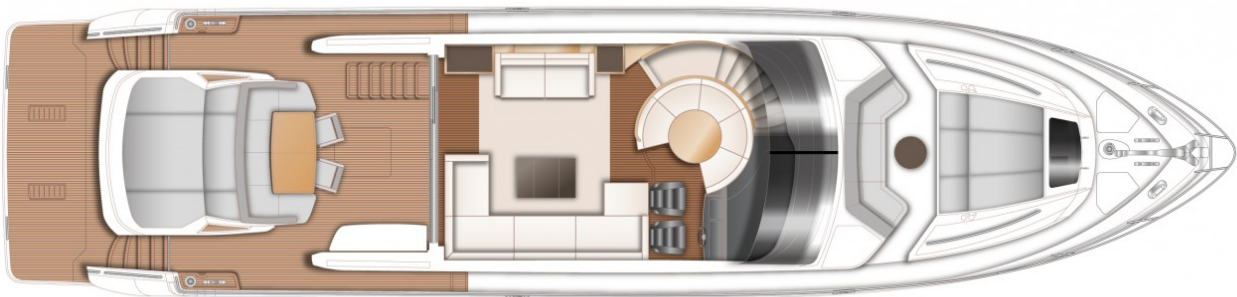
LAYOUTS

---



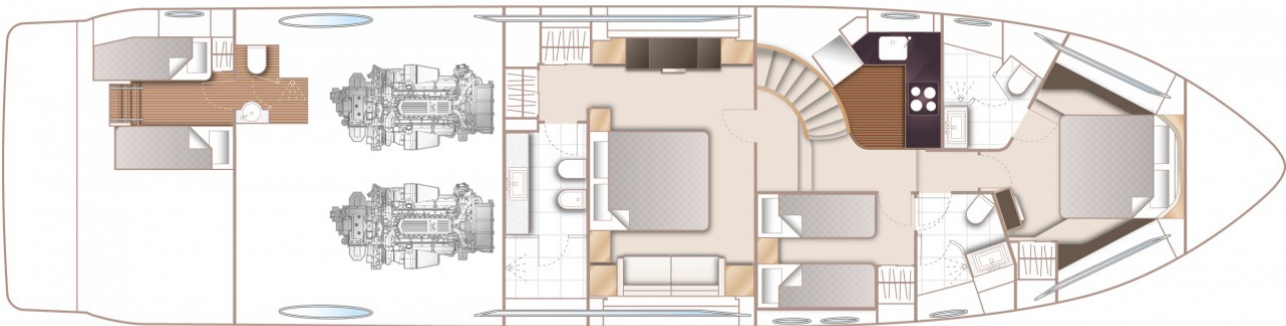
FLYBRIDGE

---



MAIN DECK

---



LOWER DECK

---

Yachts on the commission of Princess Yacht Monaco. The Company is not responsible for the accuracy of the information provided by the Shipowner (images used, yacht specifications, parameters, engine performance, legal design issues). The operating time of the engines is indicated at the time of preparation of the information and may change during further operation. The need for an inspection remains at the discretion of the Buyer. Exact parameters and characteristics can be specified in the contract of sale. Additional information is available from the manager on request.