

PRINCESS V48 OPEN



SOLD

HIGHLIGHTS

/ 120 ENGINE HOURS
/ VOLVO JOYSTICK
/ YACHT-CONTROLLER

/ SEAKEEPER 6
/ GENERATOR 11 KW
/ BOWTHRUSTER

СПЕЦИФИКАЦИИ

Местоположение	Monaco, Monaco	Запас воды	364 л
Год	2017	Каюты	2
Длина	14.07 м	Двигатели	Volvo IPS 600
Ширина	4.11 м	Макс. мощность	2 x 435 лс
Осадка	1.14 м	Макс. скорость	35 +
Водоизмещение	14.2 tonnes	Наработка двигателей	120 м/ч
Запас топлива	1325 л	Цена	825 000 € (inc VAT)

ОБОРУДОВАНИЕ

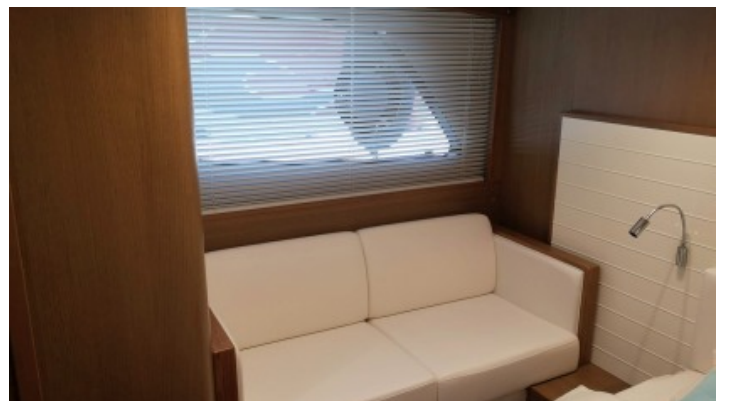
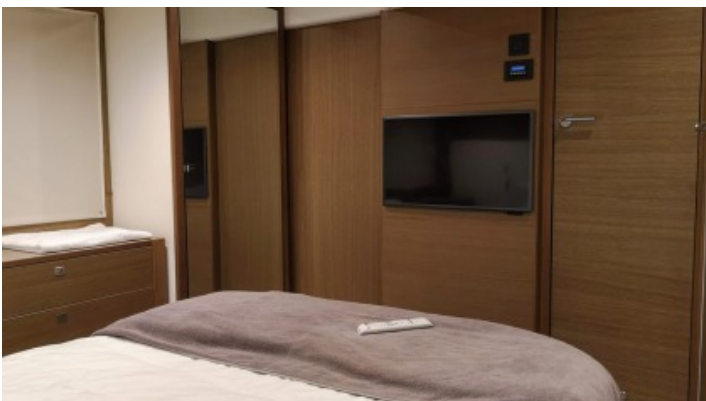
- Hull White with dark grey waterline & black antifoulingWhite hull
- Twin Volvo IPS 600 (2 x 435 hp)
- Seakeeper 6 (2nd Gen.)
- Volvo Joystick control
- Additional “Yacht Controller” installed
- Bowthruster
- Rovere Oak interior wood Satin finish
- Scissor berths to forward cabin (in place of double)
- Lower dinette table to convert to double berth with telescopic table legs and infill cushion
- Passerelle (2.9m telescopic letterbox type)
- Teak to side decks and foredeck
- Wetbar with BBQ and refrigerator
- Stainless steel anchor in place of standard (20kg)
- Stainless steel anchor chain (50M in place of standard 40m galvanised chain)
- ONAN 11 Kw /50Hz generator (with hydrohush exhaust system)
- in place of standard
- Dishwasher in galley (6 place drawer type)
- Lower Saloon – LED TV + Fusion Radio/DVD/MP3 player with Bluetooth facility
- Owner’s stateroom – LED TV + Fusion Radio/DVD/MP3 player with Bluetooth facility
- Forward Guest cabin – LED TV + Fusion Radio/DVD/MP3 player with Bluetooth facility
- Raymarine Chartplotter/GPS with external GPS and 15.4” brilliant color multifunction display
- Raymarine HD Rdar
- International VHF
- Reverse cycle AIRCONDITIONING / HEATING : (32,000 btu) tropical specification up to 40°C
- Electric discharge toilets
- Foredeck sunbed cushions
- Sun awning with telescopic stainless steel support

ДВИГАТЕЛИ

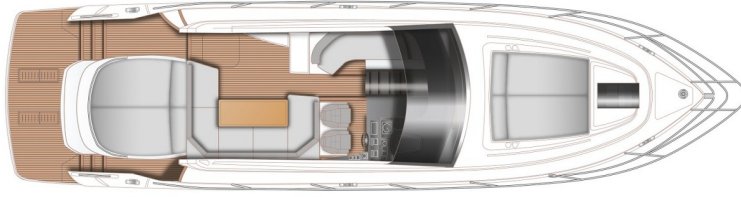
Volvo IPS-600 (2 x 435 hp)



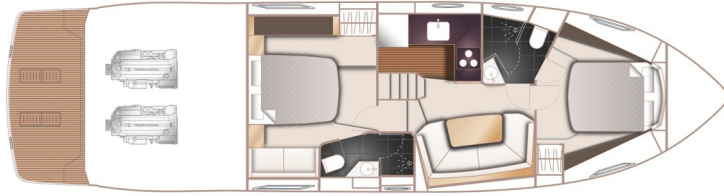
ИНТЕРЬЕР



LAYOUTS



MAIN DECK



LOWER DECK
