

## PRINCESS Y72 (059)



BROKERAGE

### HIGHLIGHTS

/ VIDEO MONITORING SYSTEM  
/ THIRD STATION CONTROL IN COCKPIT

/ BOW AND STERN THRUSTERS  
/ VERY WELL MAINTAINED

### СПЕЦИФИКАЦИИ

Местоположение	Greece, Athens	Запас воды	1342 л
Год	2012	Каюты	4+2
Длина	22.35 м	Число спальных мест	8+3
Ширина	5.49 м	Двигатели	Twin Caterpillar C32 Acert
Осадка	1.68 м	Макс. мощность	2 x 1622 лс
Водоизмещение	68 tonnes	Наработка двигателей	1400 м/ч
Запас топлива	5000 л	Цена	1 350 000 € (ex VAT)

## ОБОРУДОВАНИЕ

---

Hull color: White

---

Walnut interior wood gloss finish

---

Teak laid side decks and flybridge

---

Galley and helm floors in Rovere Oak V-Groove

---

Helm console is Chocolate Brown

---

Brown leather helm seats

---

Raymarine navigation system instead of standard Furuno

---

European version plotter

---

Safe in Master Cabin

---

White vinyl windscreen covers in place of standard black mesh

---

Foredeck sunbed cushions in Movida Metallic

---

Cockpit & Flybridge upholstery including helm seats and sunbed cushions — Movida Metallic

---

European 220v/240v sockets

---

Bow and stern thrusters

---

Third station control in cockpit (engine and thrusters controls)

---

Teak laid on foredeck walk through area

---

Stainless steel anchor in place of standard

---

Starboard stateroom to have optional twin berths with electric slider to enable conversion to double

---

Optional second generator ONAN 13,5 kW

---

Heated towel rail in bathrooms of master and vip cabins

---

Underfloor heating in bathroom in master cabin and vip cabin heads

---

Chain counter on both stations

---

BBQ NEFF Lava Brick

---

Raymarine GPM400 processor and radar antenna RA 1048SHD in place of standard

---

Raymarine G120 chartplotter on flybridge

---

Autopilot: display ST7002 (lower and upper helm) in place of standard

---

Raymarine AIS 650 + wild sensor on the top

---

Three video cameras (engine room, stbd stern, port stern, aft)

---

Eberspacher D10 heater with outlets to cockpit seating area and flybridge stairs

---

Stern docking lights

---

## ДВИГАТЕЛИ

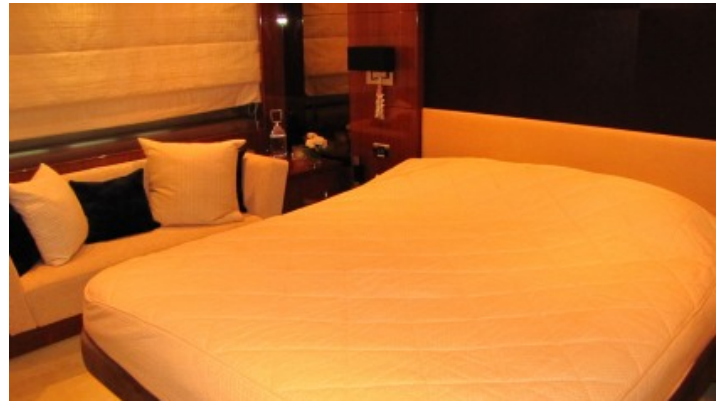
---

Twin Caterpillar C32 Acert (2 x 1622 hp)

## ЭКСТЕРЬЕР

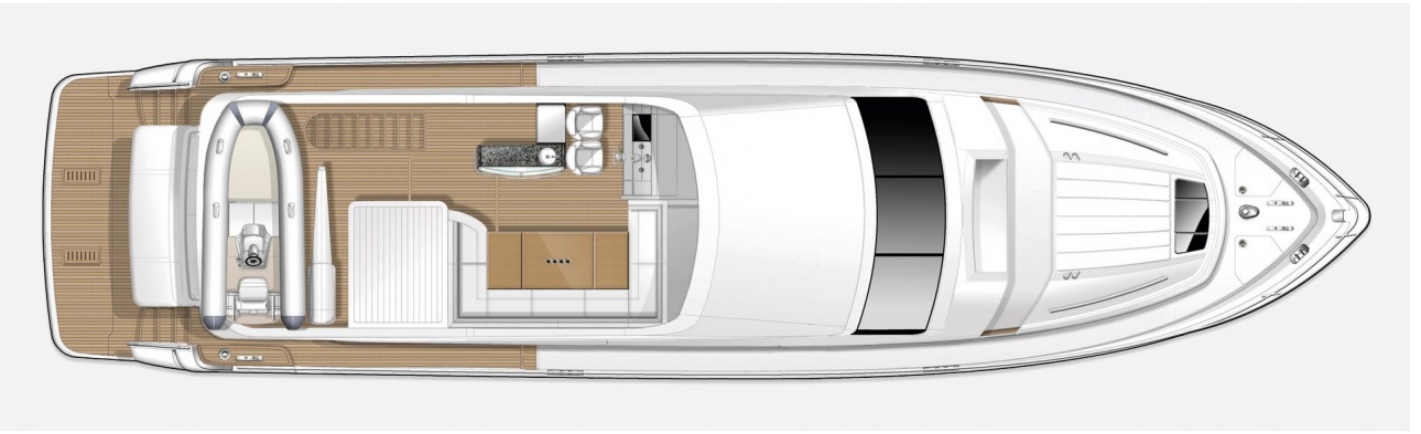






## LAYOUTS

---



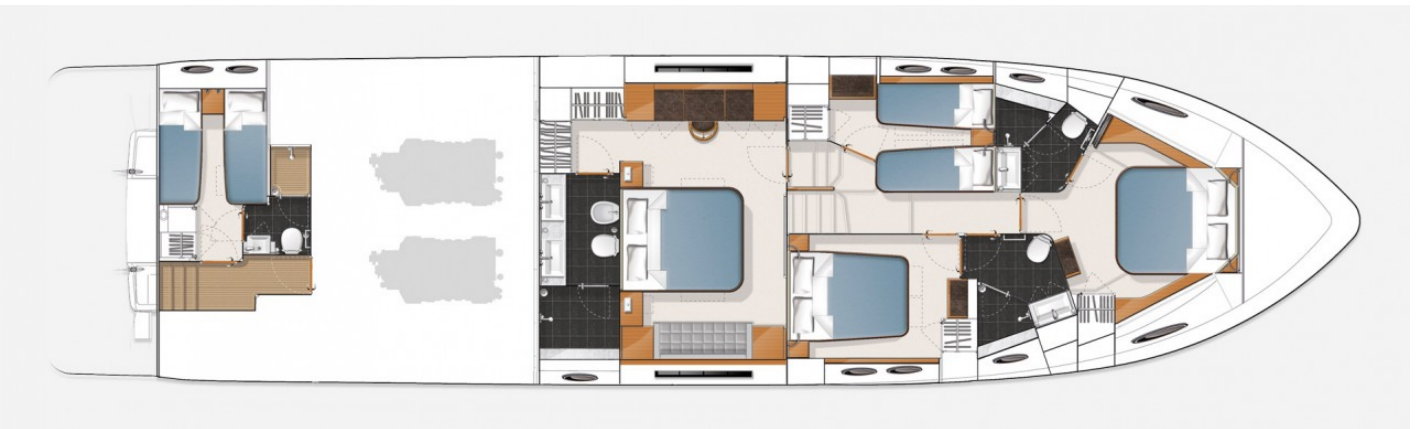
FLYBRIDGE

---



MAIN DECK

---



LOWER DECK

---