

2023 PRINCESS F50

1 290 000 €



BROKERAGE

## HIGHLIGHTS

- / LOW ENGINE HOURS
- / 3 CABINS
- / EU VAT PAID
- / EXTERIOR DECKS FULLY IN TEAK
- / HYDRAULIC PLATFORM
- / ONAN 11 KWT GENERATOR
- / BIMINI TOP ON THE FLYBRIDGE

## SPECIFICATIONS

Location	Antibes, France	Cabins	3+1
Year	2023	Berths	6
Length	15.7 m	Engines	Volvo IPS 800
Beam	4.3 m	Max power	2 x 600 hp
Draft	1.39 m	Max speed	34
Displacement	21.3 tonnes	Engine hours	320 m/h
Fuel capacity	1850 l	Price	1 290 000 € (inc VAT)
Water capacity	428 l		

The yacht is on the commission of Princess Yacht Monaco. The Company is not responsible for the accuracy of the information provided by the Yacht owner (images, specification, parameters, engine performance, legal, etc). The operating time of the engines is indicated at the time of preparation of the information and may change during further operation. The need for an inspection remains at the discretion of the Buyer. Exact parameters and characteristics can be specified in the contract of sale. Additional information is available upon request.



We are delighted to offer this exclusive listing - Princess F50, delivered in 2023 and maintained in as-new condition with only 320 engine hours. Powered by twin Volvo IPS 800 (600hp) engines, she combines sporty performance with the efficiency and comfort ideal for Mediterranean cruising.

The main deck features a spacious sociable cockpit, seamlessly connected to the saloon and well-positioned galley for indoor and outdoor entertaining. Panoramic windows flood the interior with natural light, creating an inviting atmosphere throughout.

Below deck, she offers three beautifully appointed cabins for up to six guests, including a full-beam owner's suite, a forward VIP, and a twin cabin. Two elegant bathrooms with upgraded finishes complete the accommodation.

Contact us today for the full specification, photos, and video tour

”





























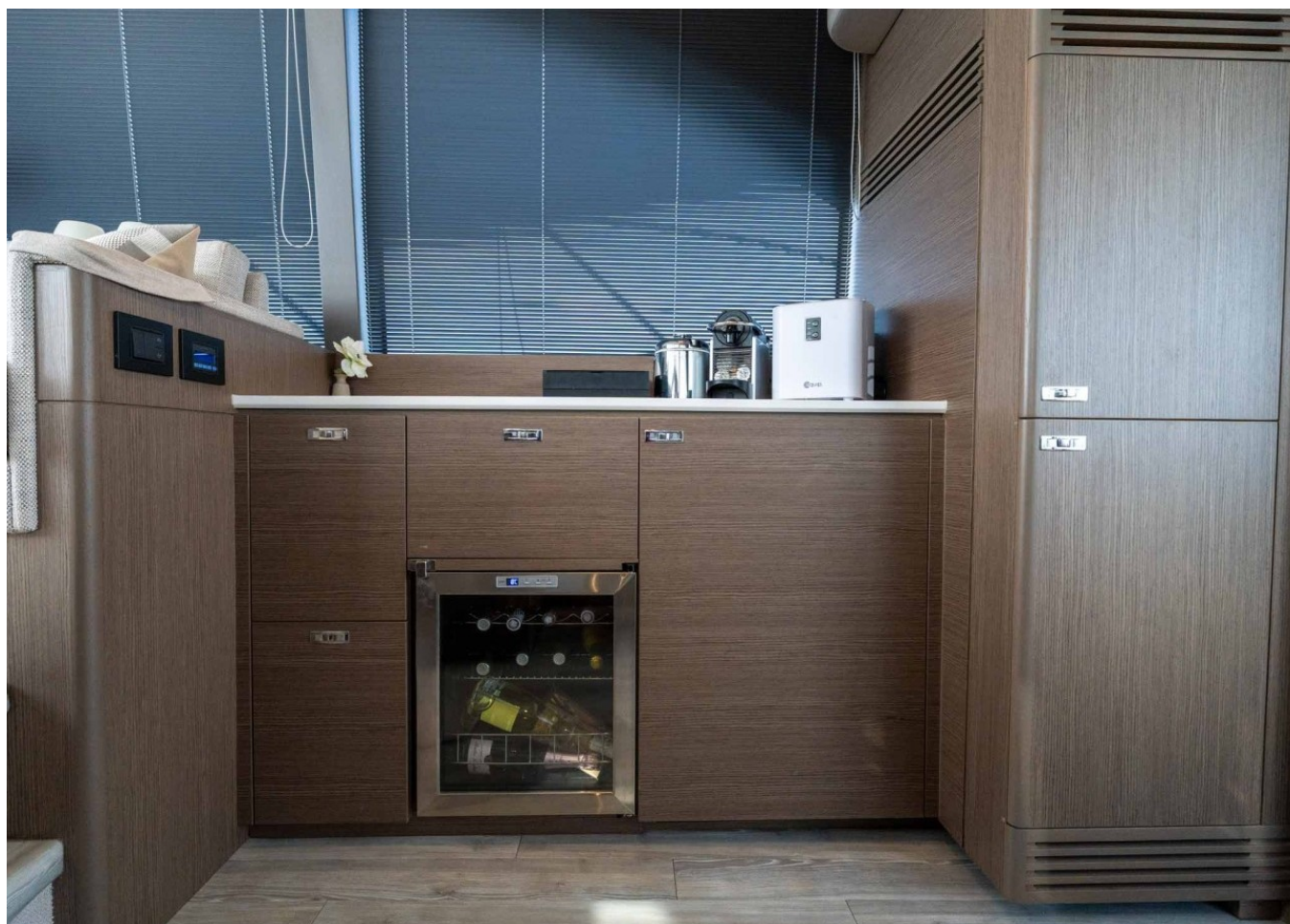












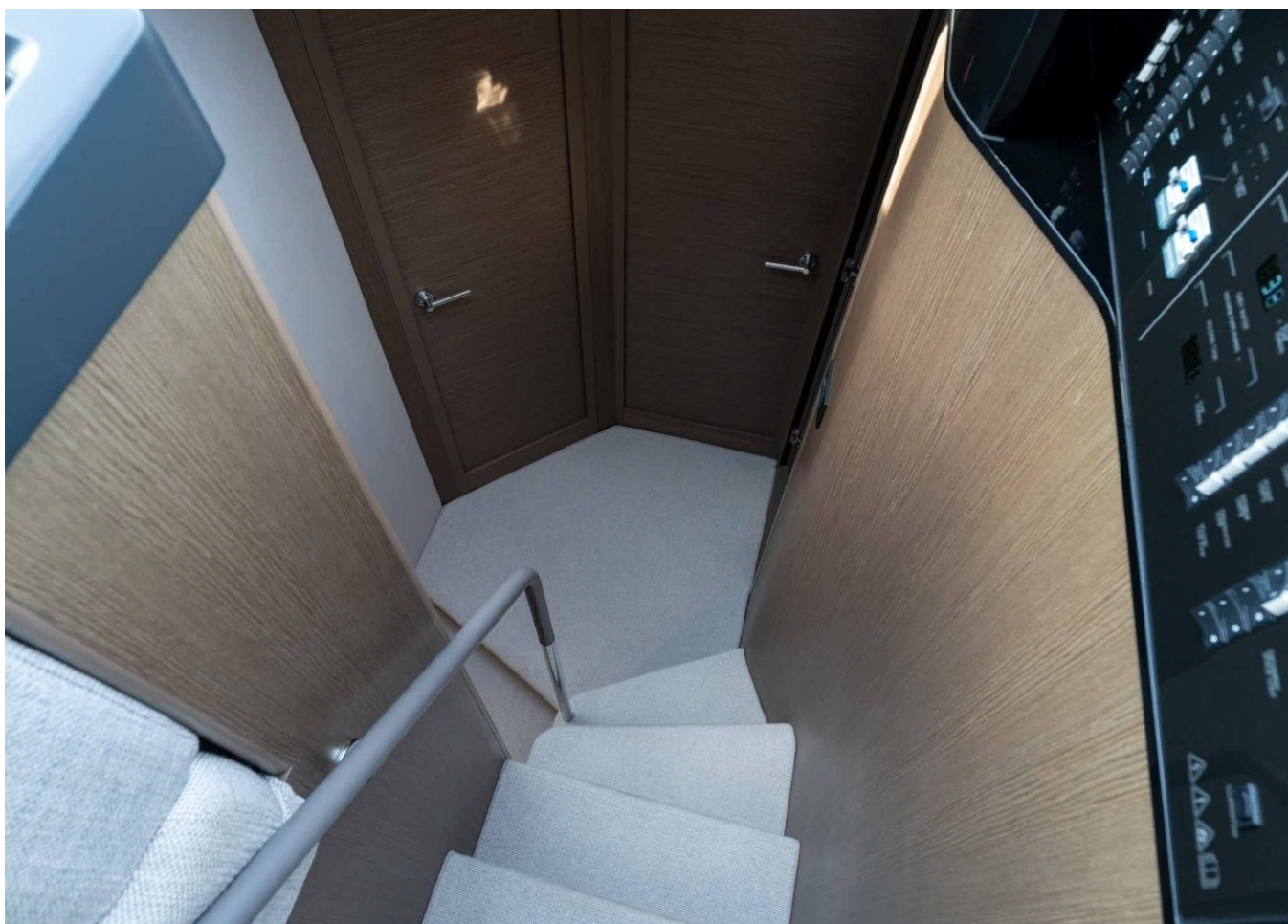




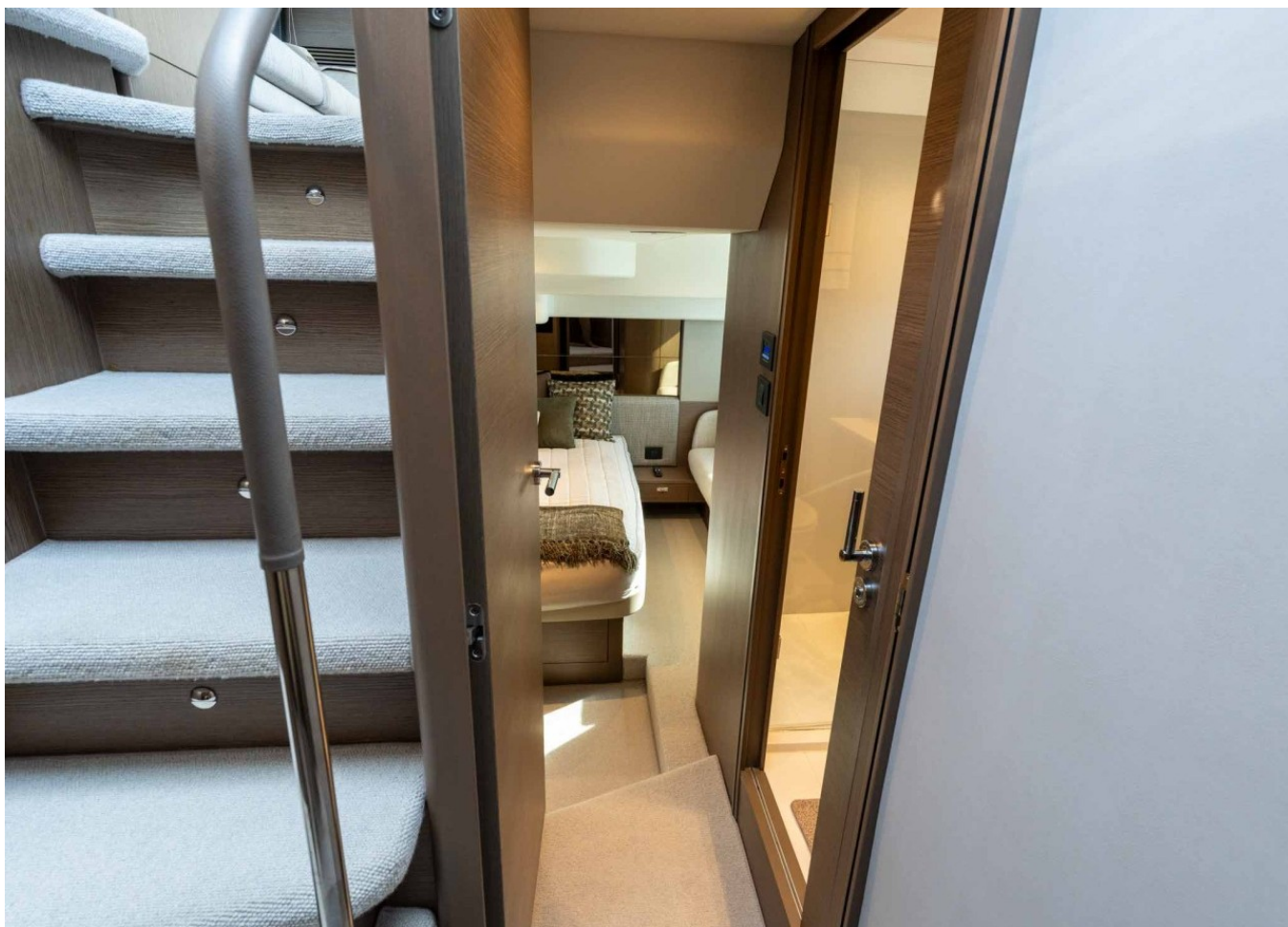
















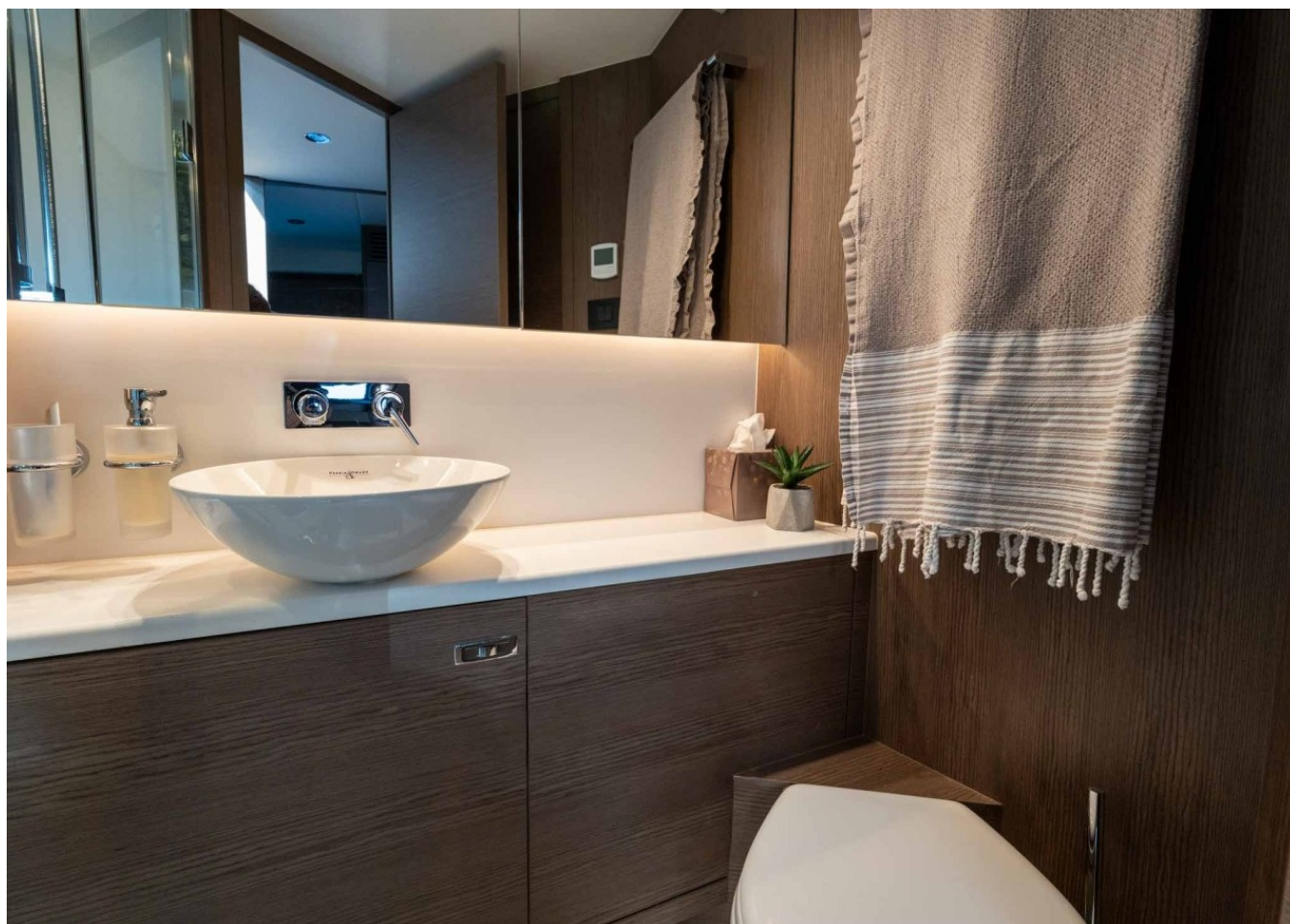
















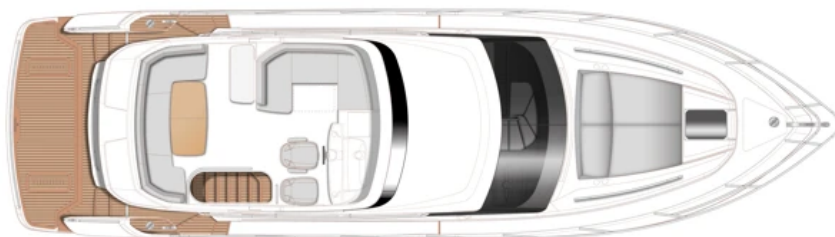






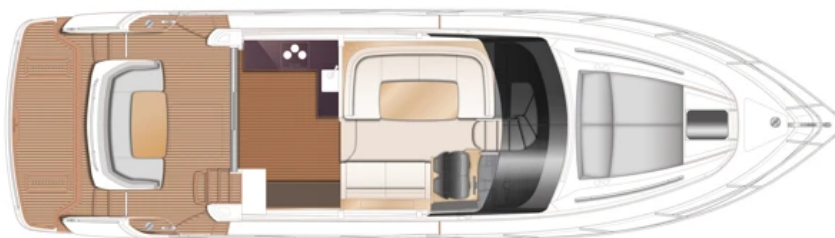
## LAYOUTS

---



FLYBRIDGE

---



MAIN DECK

---



LOWER DECK

---



## EQUIPMENT

---

### ALLURE COLLECTION II (Without Hard Top)

Quilting detail with contrast piping and panelling to main deck helm seats

---

Flybridge console finished in metallic Oyster Grey

---

Quilting detail with contrast piping and panelling to flybridge helm seats

---

Foredeck sunbed cushions and adjustable headrests

---

Lower helm seat to be in Cirrus leather with Gunmetal contrast + Allure stitching

---

Exterior upholstery in Met Ice with Macadamia contrast

---

Teak step nosings upgrade (includes transom, flybridge, foredeck – steps to side deck when side deck option is selected)

---

### GALLEY

Galley worktop to be Koko White

---

### BATHROOMS

Bathroom countertops to be Koko White

---

Heating in one WC floor (not in shower)

---

Bathroom floors are Koko White Solid Surface (satin finish)

---

### COLOUR SCHEME

Silver Oak satin wood interior

---

Small rectangular quilting on bed covers

---

Colour schemes from the Quartz VIII range of fabrics as standard

---

### DECK HARDWARE

Transom platform to have electro-hydraulic raise/lower facility (450 kg SWL – max tender weight 300 kg) with dinghy chock system

---

Teak laid flybridge deck

---

Opening window to portside of saloon

---

Side boarding gates to cockpit

---

Chain meter counter for fore windlass at lower and upper helm

---

Additional 10m of 10mm anchor chain (total 50m)

---

Scandinavian pulpit, lowered opening in bow

---

Stainless steel anchor in place of standard



(20kg)

---

Teak to side decks and foredeck

---

## GENERATOR

ONAN 11kW / 50Hz generator (with hydroush exhaust system) in place of standard

---

## ELECTRICAL

---

Continental 220v/240v sockets

---

Dimmer switches to saloon, galley, cockpit and all cabins

---

Dishwasher in galley (drawer type - 6 place setting)

---

Shorepower cable incl. adapter

---

---

Wine cooler (where icemaker is normally fitted)

---

Fit copex with mouse from engine room to lower helm position and lower helm to upper helm

---

---

Combination Washing machine/dryer (fitted below companionway stairs)

---

## AUDIO VISUAL & COMMUNICATIONS

**Deck saloon:** Fusion Apollo MS-RA670 with DAB/Wifi and external USB, paired with Fusion speakers (2)

---

**Owner's Stateroom TV & Audio Package:** 32" LED TV with a Fusion Apollo MS-RA770 with AM/FM/Bluetooth/DAB/WIFI and external USB, paired with Focal speakers (4) and subwoofer

---

**Flybridge:** Fusion Apollo SRX-400 Radio/Wi-Fi/Bluetooth, paired with waterproof Fusion speakers (2). Includes 2 x Fusion ARX-70 wireless remotes

---

**Cockpit Audio Package:** Fusion Apollo SRX-400 paired with Fusion waterproof speakers (2)

---

---

**Deck Saloon TV Package:** 43" LED TV on a power lift mechanism linked to audio system

---

## NAVIGATION

---

Autopilot with rate gyro compass

---

Garmin XHD colour radar with 24', 4kW Radome

---

Volvo/Garmin 16" multifunction displays at lower and upper helm incorporating GPS/chartplotter, echo sounder, log trip as well as engine instrumentation and autopilot controls. Fuel gauge and helm position.

---

Garmin electronic chart BLUECHART G3 VEU721L NORTHERN EUROPE

---

---

Second Garmin 16" colour multifunction display fitted at lower helm position

---

Stern camera connected to plotter at lower and upper helm

---

---

Second Garmin 16" colour multifunction display

---

Garmin 315 dual station VHF/DSC with intercom

---



at the upper helm

---

## AIRCONDITIONING

Reverse cycle air-conditioning / heating  
(56,000 Btu - tropical specification up to  
40°C)

---

## HEATING / DEMIST

Windscreen demist system using warm air  
heater powered from calorifier

---

## HOLDING TANK / TOILETS

Electric discharge of holding tank

---

## EXTERIOR UPHOLSTERY / CANVAS / COVERS

Exterior cushions to be Vogue Eucalyptus with  
Vogue STONE contrast

---

Black Cover over sun cushion

---

Upper helm seat to be in Met Ice with Met  
Macadamia contrast (contrary to the other  
outdoor cushions) + Allure stitching

---

Black Cover over cockpit table

---

Black Cover over cockpit sofa

---

Reticulated foam to foredeck sunpad cushion in  
place of standard

---

## ACCESSORIES

Princess China (5 piece consisting of plate, side  
plate, bowl, cup & saucer) - 6 place setting

---

Princess Glasses - 6 wine, 6 tumblers

---

David Mellor "Paris" Cutlery (6 pieces) - 6 place  
set

---

## CUSTOM SELECTIONS

Black Styling blade

---

Manual bimini with black canvas

---

Underwater lights transom

---

Headboards in both cabins to be Gambie  
43230111

---

Different colour of blinds

---

Liferaft Ocean Safety Regatta 6 persons in a  
bag

---



---

2023 PRINCESS F50

1 290 000 € (inc VAT)



---

Follow Princess Yachts Monaco

