

MONDOMARINE "OKKO" 12 000 000 €



BROKERAGE

HIGHLIGHTS

/ FULLY EQUIPPED
/ DIVING STATION ON THE BOARD

/ WIDE RANGE OF WATER TOYS
/ UNIQUE INTERIOR WOOD

SPECIFICATIONS

Location	France
Year	2012
Length	40.8 m
Beam	8.1 m
Draft	2.3 m
Displacement	283 tonnes
Fuel capacity	48500 l
Water capacity	8350 l
Engines	2 x MTU 12V 2000 M91
Max power	2 x 1457 hp
Max speed	16.5 +

Engine hours	1750 m/h
Price	12 000 000 €
Superstructure	Aluminum
Exterior Design	Giorgio Vafiadis
Interior Design	Giorgio Vafiadis
Total guests (sleeping)	10
Total guests (cruising)	12
Cabins	5
Crew	7
Number of Beds - Crew	3 + Captain's cabin
Flag	Cayman Islands

EQUIPMENT

MECHANICAL EQUIPMENTS

Generators 2 x Kohler 70EFOZD (70 kW each). Hours: 3,400h
(Port side) 3,400h (Starboard side)

Air conditioning Frigit

Stabilizers at anchor Zero Speed Naiad 525 S@A

Stabilizers underway Zero Speed Naiad 525 S@A

All hours are updated – More accurate data on request

TENDER & TOYS

TENDERS

Castoldi JT 17 Jet Tender

SOLAS approved rescue Tender Zodiac Ribo 340P with a Mercury 25HP outboard

WATER TOYS

2 x Sea Doo GTX 260 jet skis

2 x Sea Bob Cayago F7

2 x Itiwit inflatable paddle boards 3m23

Jobe Galaxy Ringo

Jobe Airstream III £

Jobe Virtue 67" Water Ski

Jobe Rebubilik Wakeboard Package

Henshaw Water Pool

Various Wet suits and water jackets

COMMUNICATION

4G

VSAT

VHF DSC

MF/HF DSC

ENGINES

2 x MTU 12V 2000 M91 (2 x 1457 mh)

Engine hours:

1750 h (Port side)

1750 h (Starboard side)

All hours are updated - More accurate data on request

AUDIO VISUAL EQUIPMENT

Sky box HD with flat TV screens throughout the whole vessel with Crestron AV system and iPad remote control Kaleidescape system

Denon amplifier and blue Ray disc player combo S-5DB in Main salon, all cabins and Crew areas

DECK FACILITIES

SUN DECK

Aft: Jacuzzi and sun pads

Amidships: Al fresco dining area, lounge

BRIDGE DECK

Aft: Dining table, bar, lounge area

Amidships: Upper salon + dining area, Bridge + Captain's cabin
Bow Area: Tender and Jet ski storage

MAIN DECK

Aft: Lounge and bar

Amidships: Main salon + dining area, Galley and Crew mess Full-beam Forward: Master suite

LOWER DECK

Aft: Swim platform, tender garage, engine room Amidships: 4 x Guest cabins, 3 x Crew cabins

ACCOMODATION

OKKO boasts 5 versatile en-suite staterooms, listed as:

1 x full-beam Master suite on Main deck, with dressing room and bathroom

2 x VIP cabins on Lower deck with dressing and bathroom each

2 x Twin cabins on Lower deck with additional Pullman bed each

NOTES

At 41m length, OKKO is an all-aluminum tri-deck semi-displacement superyacht with a bulbous bow, built on a popular and existing platform at Mondomarine shipyard. Delivered in 2012 together with Imperial acting as Owner's Representative and Build Supervisor, with exterior and interior designs created by Giorgio Vafiadis who gave a styling that is at once modern and classic, OKKO's particularly appealing features are her beautiful symmetrical lines with a mix of angular and rounded shapes and large rectangular windows. Going up on to the Sun deck, a fabulous area designed to maximise usable space offering an incredible view and a well-designed al-fresco dining. When opened, this area transforms into the perfect relaxation place with a luxurious bar, BBQ, Jacuzzi, seating and sunbed area. Mondomarine also implemented important work to prevent noise and vibration issues, commonly found of similar vessels. A specific vibro-acoustic work has been implemented on OKKO and the results are fantastic with greater acoustic insulation and less vibration for all her guests in navigation.

The yacht's elegant styling does not give any clue as to her relatively high volume: at 367 gross tons, OKKO is much more voluminous than her sisterships. OKKO boasts a clean design sublimated by luxury materials and fabric: beveled mirrors, white onyx, Venetian glass and soft goods by one of the hallmarks of Italian style, the fashionable Fendi, pick up all light in the interior. The wood is a consistent theme throughout the yacht, and a perfect high-gloss finish brings out its particular veneers while enhanced by the use of golden and tobacco-tinged tropical hardwood's panels to carefully match the atmosphere. On entering the main salon, you are immediately enraptured by a magic that pervades the whole yacht. The salon and the dining room for 12 guests follow a classic access arrangement, a very spacious area although it is home to a huge U-shaped sofa, a table and chairs. The Bridge deck salon features custom-designed furniture as well as pieces from Fendi and IPE Cavalli, which surround an 80" flat screen TV. Blackout curtains transform this area into a cinema.

OKKO's night side offers five generous en-suite cabins: the Owner's suite occupies a generous space forward on the Main deck and includes an en-suite lavished in marble and back-lit onyx; while 4 guests cabins are fitted on the lower-deck, comprising two doubles and two twin cabins with Pullman berths. Each cabin has its own Kaleidoscope system offering a wide selection of world cinema from your iPad, and a large selection of A/V amenities. Built with a specific care and attention to detail; Finalist of the World Superyacht Awards 2013, OKKO is a truly modern, exciting, voluminous and stable vessel with excellent sea keeping qualities. Thanks to her crew of 7, who maintains OKKO in the optimal conditions, you will be ensured of a very relaxed journey at sea on board a modern and versatile yacht.

EXTERIOR

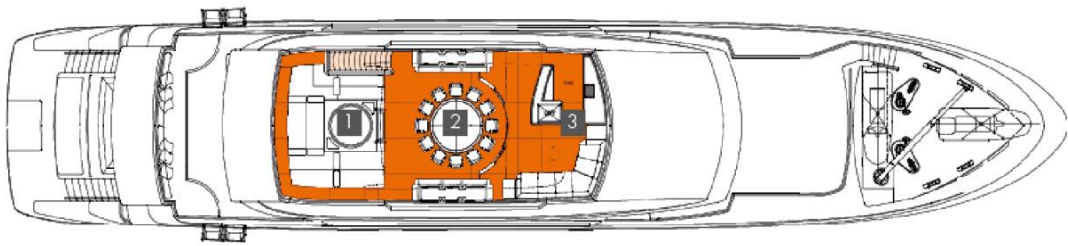


Yachts on the commission of Princess Yacht Monaco. The Company is not responsible for the accuracy of the information provided by the Shipowner (images used, yacht specifications, parameters, engine performance, legal design issues). The operating time of the engines is indicated at the time of preparation of the information and may change during further operation. The need for an inspection remains at the discretion of the Buyer. Exact parameters and characteristics can be specified in the contract of sale. Additional information is available from the manager on request.

INTERIOR

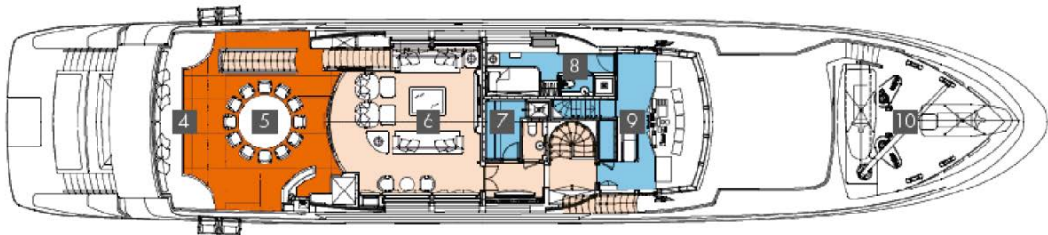


LAYOUTS



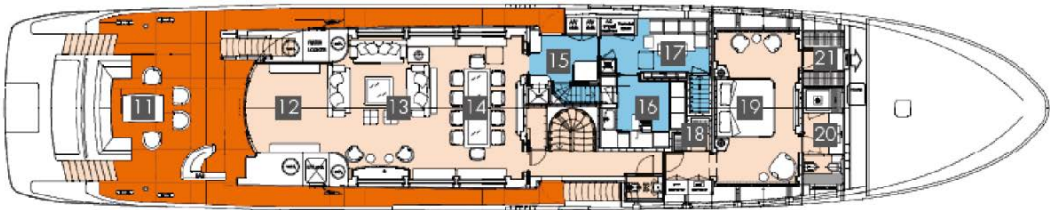
- 1 JACUZZI + SUN BEDS
- 2 ALFRESCO DINING
- 3 FORE DECK SALON

SUN DECK



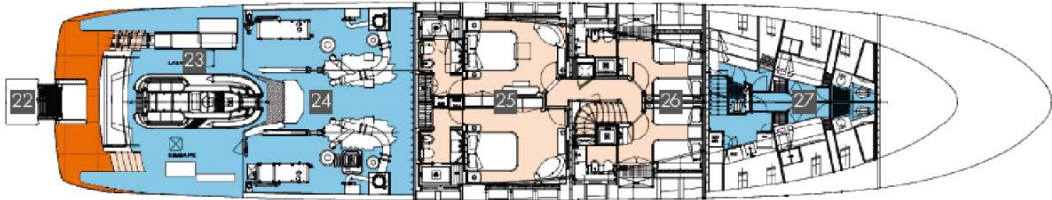
- 4 UPPER DECK AFT LOUNGE
- 5 UPPER DECK DINING AREA
- 6 UPPER DECK SALON
- 7 UPPER DECK PANTRY
- 8 CAPTAIN'S CABIN
- 9 BRIDGE
- 10 TENDER & WATER TOYS STORAGE

BRIDGE DECK



- 11 MAIN DECK AFT SALON AND BAR
- 12 LOBBY
- 13 MAIN DECK SALON
- 14 MAIN DECK DINING
- 15 MAIN DECK PANTRY
- 16 GALLEY
- 17 CREW MESS
- 18 MASTER DRESSING (HIS)
- 19 MASTER SUITE
- 20 MASTER BATHROOM

MAIN DECK



- 22 SWIM PLATFORM
- 23 LAZARETTE
- 24 ENGINE ROOM
- 25 2 X VIP CABINS
- 26 2 X TWIN CABINS
- 27 CREW ACCOMMODATION

LOWER DECK

Yachts on the commission of Princess Yacht Monaco. The Company is not responsible for the accuracy of the information provided by the Shipowner (images used, yacht specifications, parameters, engine performance, legal design issues). The operating time of the engines is indicated at the time of preparation of the information and may change during further operation. The need for an inspection remains at the discretion of the Buyer. Exact parameters and characteristics can be specified in the contract of sale. Additional information is available from the manager on request.