



F50





Featuring the latest F Class exterior styling, and advanced technology on-board, the F50 flybridge yacht delivers dynamic performance at sea.

The F50 features a sophisticated standard of refinement with contemporary finishes and handcrafted elements throughout. The sociable cockpit leads through to the main saloon, with open galley aft and large U-shaped sofa and dining table for six guests.









Guests are accommodated on-board across three beautifully appointed cabins, two of which are en-suite. The spacious full-beam master stateroom invites relaxation, with a double bed, sofa and dressing area. The generous en-suite forward stateroom includes a large double bed with the option of scissor berths to provide flexibility for guests.

New technology is available on-board, including Gyro stabilizers and Volvo Penta Easy boating as an option to complement the F50's advanced resin-infused hull and efficient twin Volvo D8-IPS 800 (2 x 600mhp) engines which provide speeds up to 34 knots.







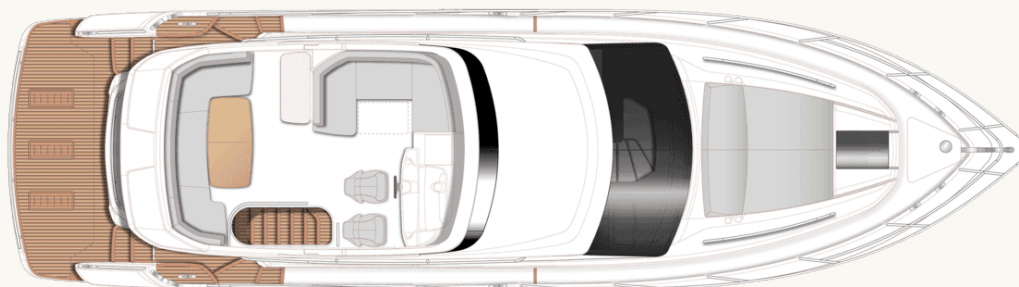
Take a virtual tour of the F50



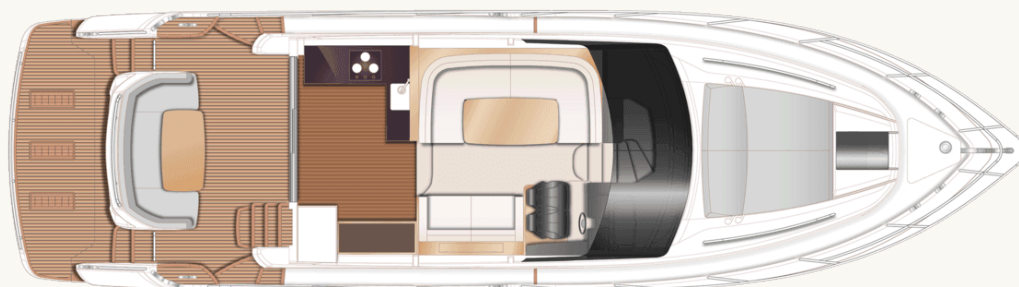
# F50

## Layout and Specifications

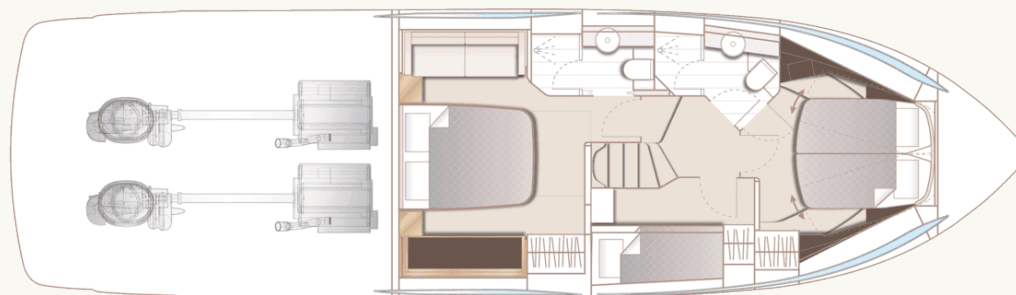




F50 Flybridge



F50 Main Deck



F50 Lower Deck



## Principal Dimensions

Length overall (incl. pulpit)	51 ft 4 in / 15.65m
Length overall (excl. pulpit)	49 ft 8 in / 15.14m
Beam	14 ft 1 in / 4.30m
Draft	4 ft 7 in / 1.39m
Displacement approx.	21,331 kg / 47,027 lbs*
Fuel capacity	406 gal / 488 US gal / 1,850 l
Water capacity (excl. calorifier)	94 gal / 113 US gal / 428 l
Black water tank	32 gal / 39 US gal / 150 l

## Engines - Diesel

Twin Volvo D8 IPS 800 (2 x 600mhp)	Maximum speed range – 32-34 knots <sup>†</sup>
------------------------------------	--

## Full Specification

### Deck fittings

- Teak-laid transom platform, cockpit deck, flybridge stairway and steps to side deck
- Reversible electric anchor winch with foredeck, main helm and flybridge controls
- Stemhead roller with automatic anchor launch and retrieve
- Self-stowing galvanised Lewmar Delta anchor (20kg/44lbs) with flush pin shackle and 40m of 9.5mm chain
- Deck hatch access to chain locker
- Fender storage
- Stainless steel bow and stern fairleads
- Stainless steel bow, stern and spring cleats
- Stainless steel pulpit and guard rails
- Stainless steel coachroof and flybridge handrails
- Foredeck hatch
- PVC rubbing band with stainless-steel insert
- LED deck level lighting
- Illuminated crown logo to transom
- Full set of IMCO navigation lights
- Riding light

- Twin beam searchlight with dual station remote controls
- Twin electric horns
- Fuel and water fillers
- Foredeck sunbed recess

### Cockpit and bathing platform

- Self-draining
- U-shaped seating/dining area with teak table
- LED overhead and deck level lighting
- Stainless steel handrails
- Lockable gas strut assisted hatch to engine room/lazarette
- Liferaft stowage locker
- Storage lockers
- Locker containing remote fuel cocks, manual bilge pump with valve chest and manual controls for automatic fire extinguishers
- Integral stairway to flybridge with teak step treads
- Twin transom gates leading to bathing platform
- Hot and cold transom shower

- 220/240v shore support inlet
- Cockpit canvas cover
- Transom hatch to stern lazarette
- Transom bathing platform with fold away swimming ladder (electro-hydraulic raise/lower mechanism for transom platform (450kg SWL) is optionally available)

### Flybridge

- Dual station instruments and controls
- Autopilot controls
- Adjustable steering wheel
- Audible and visual alarm for bilge pumps and water in fuel
- Twin helm seats with fore and aft adjustment for helmsman
- Refrigerated top loading coolbox
- Large U-shaped upholstered seating
- Folding teak table
- L-shaped seat (converts to sunbed)
- Fusion Apollo marine stereo system connected to Fusion 7.7" waterproof speakers (2)



- Clear view hatch to aft cockpit
- Wind deflector screens
- Stainless steel handrails
- LED deck level lighting
- GRP radar arch
- Twin matching whip aerials for VHF R/T and radio
- Console and seat covers
- Optional wetbar with barbecue, sink, waste bin and storage
- Optional bimini

#### **Helm position**

- Double leather upholstered helm seats
- Console with 16" Volvo/Garmin display incorporating engine instruments and chartplotter
- Dual station instruments and controls at flybridge and lower helm positions:
  - power-assisted steering
  - adjustable steering wheel
  - rudder position indicator
  - high-speed magnetic compass
  - electronic engine controls
  - joystick control

- trim tab controls with indicators
- electric anchor winch remote control
- speed and distance log (incorporated into 16" screen at lower control position)
- echo sounder with alarm (incorporated into 16" screen at lower control position)
- autopilot
- VHF with DSC R/T and intercom
- remote control searchlight
- horn button
- Drinks holders
- Toughened glass screen (clear for night vision)
- Windscreen wipers with freshwater windscreen wash
- Exterior black mesh windscreen covers
- Bilge pump controls with visual pump running warnings
- 24v and 240v electrical control panel
- Riding light, helm and navigation light control switches
- USB connection point (1)
- LED overhead lighting (24v) and night lighting
- Opening window adjacent to helmsman
- Fitted carpet

#### **Deck saloon**

- Triple stainless steel framed sliding door to cockpit
- U-shaped sofa to port
- Dining table
- Two-seater sofa to starboard
- Fusion Apollo marine audio system connected to Fusion 6" CL602 speakers (2)
- Manual tension Venetian blinds or curtains to all windows
- LED overhead lighting (24v)
- Stairway to lower accommodation
- Fitted carpet

#### **Galley**

- Solid Surface countertop
- 3-zone ceramic hob
- Extractor fan
- Combination microwave/convection oven with grill
- Stainless steel sink with mixer tap
- Chopping board
- Refrigerator with freezer compartment (155l)
- Optional full height fridge/freezer (270l)
- Waste bin
- Drawers and storage cupboards

- Dedicated crockery and cutlery storage
- Full height larder unit
- Sideboard with storage, drinks fridge and provision for optional ice maker
- Bottle and glassware storage
- Manual tension venetian blinds or curtains to all windows and doors
- LED overhead and task lighting (24v)
- 220/240v outlets (4)
- Timber flooring (V-groove planked)

#### **Accomodation**

- All cabins and bathrooms feature opening portholes
- All cabins feature 220/240v power points
- All bathrooms feature electric freshwater toilets and 240v shaver points
- Main companionway has storage space below with option for combination washer/dryer

#### **OWNER'S STATEROOM**

- Large double bed with drawers below
- Twin bedside tables
- Wardrobe with shelves

- Dressing table
- Mirror
- Sofa
- Storage lockers and drawers
- Panoramic windows including opening portholes
- Manual tension venetian blinds
- LED overhead lighting (24v)
- Individual berth lights
- 220/240v outlets (2)
- Fitted carpet

#### **En-suite bathroom**

- Wash hand basin with Solid Surface vanity top
- Mirror
- Storage lockers
- Shower compartment with automatic pump out
- Extractor fan
- Window with opening porthole
- Manual tension venetian blind
- LED overhead lighting (24v)
- Bathroom accessories
- Solid Surface flooring

#### **Forward stateroom**

- Large double bed with drawers below (option of scissor berths)
- Wardrobe with shelves
- Dressing table
- Mirror
- Storage lockers and drawers
- Window with opening porthole
- Manual tension venetian blind
- Deck hatch with integrated skylight and blind
- LED overhead lighting (24v)
- Individual berth lights
- 220/240v outlets (2)
- Fitted carpet

#### **En-suite bathroom**

- Wash hand basin with Solid Surface vanity top
- Mirror
- Storage lockers
- Shower compartment with automatic pump out
- Extractor fan
- Window with opening porthole
- Manual tension venetian blind
- LED overhead lighting (24v)
- Bathroom accessories
- Solid Surface flooring



### **Starboard guest cabin**

- Two single bunk beds
- Wardrobe with shelves
- Mirror
- Storage lockers
- Window with opening porthole
- Manual tension venetian blinds
- LED overhead lighting (24v)
- Individual berth lights
- 220/240v outlets (2)
- Fitted carpet

### **Power and drive systems**

- Twin Volvo IPS contra rotating propellers via pod drive
- Engine room lighting
- Engine room access hatch and ladder
- Power-assisted electronic steering system with hydraulic back-up
- Trim tabs with indicators
- Electronic engine controls
- Joystick manoeuvring system
- Volvo IPS active corrosion protection system for pod drive

- Engine room extractor fan with electronic time delay

### **Electrical systems**

#### **24 Volt:**

- 4 x heavy-duty batteries for engine starting
- 4 x heavy-duty auxiliary batteries
- Battery link facility with remote control at helm position
- Both battery banks are charged using a voltage sensitive relay that parallels both battery banks when a charging source is present
- 40-amp 24v battery charger
- Remote battery master switches with control switch at main switch panel
- Circuit breakers on all circuits
- 12v voltage dropper for certain navigation and radio circuits
- Princess Connect telemetry and maintenance system

#### **220/240 Volt:**

- 4 kW generator in own sound shield with water

cooled specially silenced exhaust

- Automatic fire extinguisher
- 50-amp shore support inlet
- Polarity check system
- Earth leakage safety trip
- Circuit breakers on all circuits
- Power points (240v) in: owner's stateroom, guest cabins, galley and saloon area
- Shaver points in all bathrooms

### **Fuel system**

- Fuel tanks (in NS8 marine grade alloy) with interconnection system giving 406 gal/488 US gal/1,850l capacity
- Fuel fillers on port and starboard side decks
- High-capacity Simplex fuel filter with water trap and change-over valves, water warning sensor connected to audible and visual warning lights at both helm stations
- Remote fuel cocks in cockpit locker
- Fuel gauges at both helm stations

### **Water system**

- Water tanks totalling 94 gal/113 US gal/428l plus

9 gal/11 US gal/45l hot water calorifier

- Water heated by engines and 240v immersion heater
- Automatic water pump with filter
- Pump main circuit breaker at AC/DC switch panel
- Water level gauge
- Deck filler
- Electric freshwater toilet system with holding tank, contents gauge and manual overboard discharge as well as dockside discharge system

#### **Extinguishers / fire control systems**

- Automatic/manual override fire extinguishers in engine room with warning system at flybridge and lower helm positions
- Hand operated fire extinguishers (5) in owner's stateroom, forward stateroom, starboard guest cabin, galley and lower helm position

#### **Bilge pumps**

- Automatic/manual override electric bilge pumps in engine room (2) and forward accommodation (4 in all)

- High-capacity manual bilge pump with valve system and suction points in same areas
- Electric bilge pumps have controls and warning lights at main helm and warning light with audible alarm at flybridge helm

#### **Other standard equipment**

- Ensign staff
- Fenders (6)
- Mooring warps (4)
- First Aid kit
- Tool kit
- Owner's manual and engine manual
- Quilted bedspreads supplied to all cabins
- Ship's document case
- Anchor winch back up handle

#### **Finishes**

- Teak-laid decks to transom platform, cockpit deck, steps to side decks, steps to flybridge
- Timber-laid floor to galley (V-groove planked)
- Furniture in Rovere oak with satin finish as standard. Optional finishes include ash or silver oak with a satin finish or walnut wood in a satin

or gloss finish

- Galley in specified choice of boat timber with option for lower portside galley units to be in HPL soft matt feel finish
- Solid Surface floors in all bathroom suites in guest accommodation
- White Solid Surface vanity tops in all bathroom suites in guest accommodation
- White Solid Surface galley countertop
- Choice of high-quality carpet and upholstery fabric from extensive range
- Curtains, manual tension blinds or sunscreens to all windows and portholes