

F 50



Slicing through waves at 36 knots, the new Princess F50 delivers dynamic performance and exceptional use of space. Designed with on-deck living in mind, easy transitioning between exterior and interior invites guests to move seamlessly from indoors to out. Her saloon features a U-shaped sofa and dining table for six guests which can also convert to a comfortable double berth as required, whilst her foredeck boasts a luxurious sunpad, perfect for relaxing in a secluded bay. Her flybridge features a spacious aft U-shaped seating area, forward L-shaped seating to port, which converts to a sunbed, and twin helm seats. The dual-station instrumentation and latest Volvo-Garmin navigation and control systems enable her to be helmed from both the main deck and flybridge for precision manoeuvring. All in all, an exceptional on-water experience for a compact flybridge yacht.





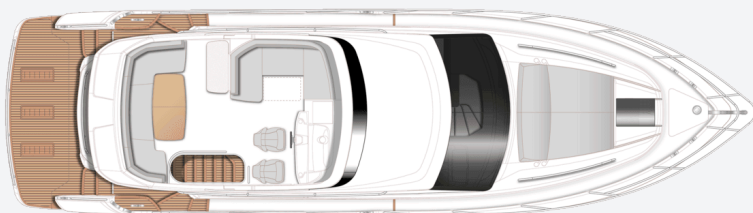
Below deck, up to six guests can enjoy three beautifully appointed, spacious cabins, two of which are en-suite. All are filled with natural light from her sweeping hull glazing. The generous full beam master stateroom features a large double bed whilst the forward stateroom has the option of scissor berths that easily convert into a double berth for added flexibility. A further twin guest cabin completes her spacious accommodation.



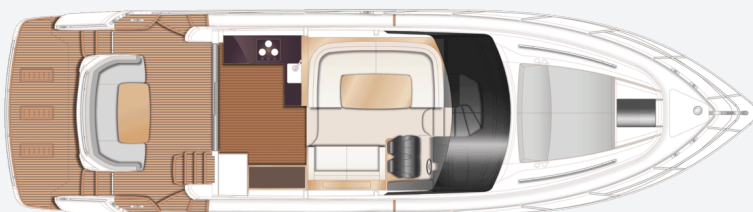




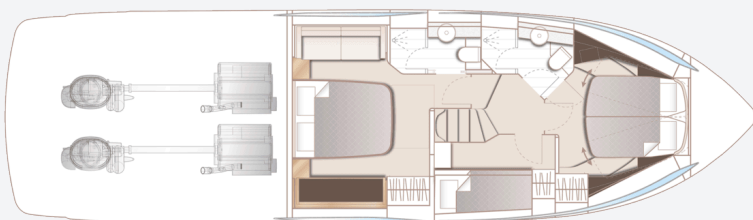
F50 SPECIFICATION



F50 Flybridge



F50 Main Deck



F50 Lower Deck

PRINCIPAL DIMENSIONS

Length overall (incl. pulpit)	51ft 0in (15.55m)
Length overall (excl. pulpit)	50ft 2in (15.30m)
Beam	14ft 3in (4.34m)
Draft	4ft 1in (1.25m)
Displacement approx. (half load)	23,200kg (51,147 lbs)*
Fuel capacity	407 gal/488 US gal/1,850l
Water capacity (excl. calorifier)	90 gal/108 US gal/410l

ENGINES

Twin Volvo IPS 800 (2 x 600mhp)	Speed range: 34-36 knots†
--	------------------------------

FULL SPECIFICATION

DECK FITTINGS

- 6mm teak-laid transom platform, cockpit deck, flybridge stairway and steps to side deck
- Lewmar reversible electric anchor winch with foredeck, main helm and flybridge controls
- Stemhead roller with automatic anchor launch and retrieve
- Self-stowing 20kg/44lbs Delta anchor with 40m of chain
- Deck hatch access to chain locker
- Fender storage
- Stainless steel bow and stern fairleads
- Stainless steel bow, stern and spring cleats
- Stainless steel pulpit and guard rails
- Stainless steel coachroof and flybridge handrails
- Foredeck hatch
- PVC rubbing band with stainless steel insert
- LED deck level lighting
- Illuminated crown logo to transom
- Full set of IMCO navigation lights
- Riding light
- Twin beam searchlight with dual station remote

controls

- Twin electric horns
- Fuel and water fillers
- Foredeck sunpad recess

COCKPIT AND BATHING PLATFORM

- Self-draining
- Upholstered seat with stowage space below
- Teak table
- LED overhead and deck level lighting
- Stainless steel handrails
- Lockable gas strut assisted hatch to engine room/lazarette
- Liferaft stowage locker
- Storage lockers
- Locker containing remote fuel cocks, manual bilge pump with valve chest and manual controls for automatic fire extinguishers
- Integral stairway to flybridge with teak step treads
- Twin transom gates leading to bathing platform
- Hot and cold transom shower
- 220/240v shore support inlet

- Cockpit canvas cover
- Transom hatch to stern lazarette
- Transom bathing platform with fold away swimming ladder
- Electro-hydraulic raise/lower mechanism for transom platform (450kg SWL) is optionally available

FLYBRIDGE

- Dual station instruments and controls
- Autopilot controls.
- Adjustable steering wheel
- Audible and visual alarm for bilge pumps and water in fuel
- Twin helm seats with fore and aft adjustment for helmsman
- Refrigerated top loading coolbox
- Large U-shaped upholstered seating
- Folding teak table
- L-shaped seat (converts to sunbed)
- Fusion Apollo marine stereo system connected to Fusion 7.7" waterproof speakers (2)
- Clear view hatch to aft cockpit

- Wind deflector screens
- Stainless steel handrails
- LED deck level lighting
- GRP radar arch
- Twin matching whip aerials for VHF R/T and radio
- Console and seat covers
- Optional wetbar with barbecue, sink, waste bin and storage
- Optional bimini

HELM POSITION

- Double leather upholstered helm seats with manual fore and aft adjustment for helmsman
- Instrument console with 16in Volvo/Garmin display incorporating engine instruments and chartplotter
- Dual station instruments and controls at flybridge and lower helm positions:
 - power-assisted steering
 - adjustable steering wheel
 - rudder position indicator
 - high-speed magnetic compass
 - electronic engine controls
 - joystick control
 - trim tab controls with indicators

- electric anchor winch remote control
- speed and distance log (incorporated into 16in screen at lower control position)
- echo sounder with alarm (incorporated into 16in screen at lower control position)
- autopilot
- VHF with DSC R/T and intercom
- remote control searchlight
- horn button
- Drinks holders
- Toughened glass screen (clear for night vision)
- Windscreen wipers with freshwater windscreen wash
- Exterior black mesh windscreen covers
- Bilge pump controls with visual pump running warnings
- 24v and 240v electrical control panel
- Riding light, helm and navigation light control switches
- USB connection point (1)
- LED overhead lighting (24v) and night lighting
- Opening window adjacent to helmsman
- Fitted carpet

SALOON

- Triple stainless steel framed sliding door to

cockpit

- U-shaped sofa to port
- Dining table
- Two-seater sofa to starboard
- Fusion Apollo marine audio system connected to Fusion 6" CL602 speakers (2)
- Manual tension Venetian blinds or curtains to all windows
- LED overhead lighting (24v)
- Stairway to lower accommodation
- Fitted carpet

GALLEY

- Solid surface worktop
- 3-zone ceramic hob
- Extractor fan
- Combination microwave/convection oven with grill
- Stainless steel sink with mixer tap
- Chopping board
- Refrigerator with freezer compartment (155l)
- Optional full height fridge/freezer (270l)
- Waste bin
- Drawers and storage cupboards
- Dedicated crockery and cutlery storage
- Full height larder unit

- Sideboard with storage, drinks fridge and provision for optional ice maker
- Bottle and glassware storage
- Manual tension venetian blinds or curtains to all windows and doors
- LED overhead and task lighting (24v)
- 220/240v outlets (4)
- Timber planked flooring

ACCOMMODATION

- All cabins and bathrooms feature opening portholes
- All cabins feature 220/240v power points
- All bathrooms feature electric freshwater toilets and 240v shaver points
- Main companionway has storage space below with option for combination washer/dryer

OWNER'S STATEROOM

- Large double bed with drawers below
- Twin bedside tables
- Wardrobe with shelves
- Dressing table
- Mirror
- Sofa
- Storage lockers and drawers

- Panoramic windows including opening portholes
- Curtains or manual tension blinds to hull windows
- LED overhead lighting (24v)
- Individual berth lights
- 220/240v outlets (2)
- Fitted carpet

EN-SUITE BATHROOM

- Washbasin with solid surface worktop
- Mirror
- Storage lockers
- Shower compartment with automatic pump out
- Extractor fan
- Opening porthole and venetian blind
- LED overhead lighting (24v)
- Bathroom accessories
- Solid surface flooring

FORWARD STATEROOM

- Large double bed with drawers below (option of scissor berths)
- Wardrobe with shelves
- Dressing table
- Mirror

- Storage lockers and drawers
- Windows with opening portholes and venetian blind
- Deck hatch with integrated skylight
- Manual tension venetian blinds
- LED overhead lighting (24v)
- Individual berth lights
- 220/240v outlets (2)
- Fitted carpet

EN-SUITE BATHROOM

- Washbasin with solid surface worktop
- Mirror
- Storage lockers
- Shower compartment with automatic pump out
- Extractor fan
- Opening porthole
- Manual tension venetian blind
- LED overhead lighting (24v)
- Bathroom accessories
- Solid surface flooring

STARBOARD GUEST CABIN

- Two single bunk beds
- Wardrobe with shelves
- Mirror

- Storage lockers
- Opening portholes and
- Manual tension venetian blind
- LED overhead lighting (24v)
- Individual berth lights
- 220/240v outlets (2)
- Fitted carpet

POWER AND DRIVE SYSTEMS

- Twin Volvo IPS contra rotating propellers via pod drive
- Engine room lighting
- Engine room access hatch and ladder
- Power-assisted electronic steering system with hydraulic back-up
- Trim tabs with indicators
- Electronic engine controls
- Joystick manoeuvring system
- Volvo IPS active corrosion protection system for pod drive
- Engine room extractor fan with electronic time delay

ELECTRICAL SYSTEMS

24 Volt:

- 4 x heavy-duty batteries for engine starting

- 4 x heavy-duty auxiliary batteries
- Battery link facility with remote control at helm position
- Both battery banks are charged using a voltage sensitive relay that parallels both battery banks when a charging source is present
- 40-amp 24v battery charger
- Remote battery master switches with control switch at main switch panel
- Circuit breakers on all circuits
- 12v voltage dropper for certain navigation and radio circuits

220/240 Volt:

- 4 kW generator in own sound shield with water cooled specially silenced exhaust
- Automatic fire extinguisher
- 50-amp shore support inlet
- Polarity check system
- Earth leakage safety trip
- Circuit breakers on all circuits
- Power points (240v) in: owner's stateroom, guest cabins, galley and saloon area
- Shaver points in all bathrooms

FUEL SYSTEM

- Fuel tanks (in NS8 marine grade alloy) with interconnection system giving 407 gal /488 US gal / 1,850l capacity
- Fuel fillers on port and starboard side decks
- High-capacity Simplex fuel filters with water traps and change-over valves, water warning sensors connected to audible and visual warning lights at both helm stations
- Remote fuel cocks in cockpit locker
- Fuel gauges at both helm stations

WATER SYSTEM

- Water tanks totalling 90 gal /108 US gal /410l plus 11 gal /13 US gal /50l hot water calorifier
- Water heated by engines and 240v immersion heater
- Automatic water pump with filter
- Main circuit breaker at switch panel
- Water level gauge
- Deck filler
- Electric freshwater toilet system with 33 gal / 40 US gal /150l holding tank, contents gauge and manual overboard discharge as well as dockside discharge system

FIRE EXTINGUISHERS

- Automatic/manual override fire extinguishers in engine room with warning system at flybridge and lower helm positions
- Hand operated fire extinguishers (5) in owners' stateroom, forward stateroom, starboard guest cabin, galley and lower helm position

BILGE PUMPS

- Automatic/manual override electric bilge pumps in engine room (2) and forward accommodation (4 in all)
- High-capacity manual bilge pump with valve system and suction points in same areas
- Electric bilge pumps have controls and warning lights at main helm and warning light with audible alarm at flybridge helm

OTHER STANDARD EQUIPMENT

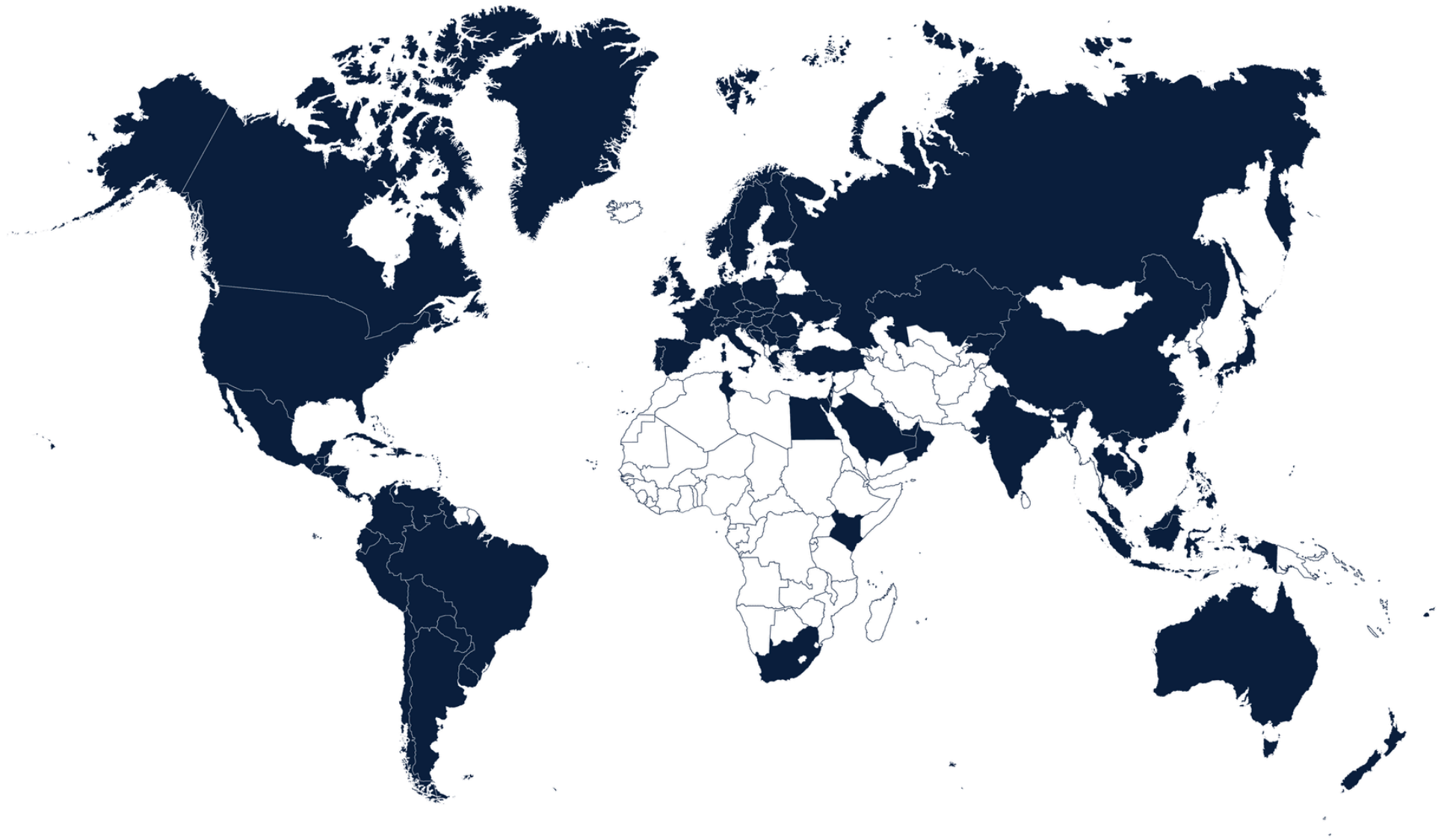
- Ensign staff
- Fenders (4)
- Mooring warps (4)
- First aid kit
- Tool kit
- Owner's manual and engine manual
- Quilted bedspreads supplied to all cabins

- Ship's document case
- Anchor winch back up handle

FINISHES

- Teak-laid decks to transom platform, cockpit deck, steps to side decks, steps to flybridge
- Timber-laid floor to galley
- Furniture in choice of Rovere Oak or Alba Oak wood with satin lacquer finish as standard. Silver Oak or Walnut wood with satin or gloss lacquer finishes available as an option
- Solid surface floors in all bathroom suites in guest accommodation
- White solid surface wash hand basin counter tops in all bathroom suites in guest accommodation
- White solid surface galley worktop
- Choice of high-quality carpet and upholstery fabric from extensive range
- Curtains, manual tension blinds or sunscreens to all windows and portholes

GLOBAL COVERAGE





THANK YOU

For more information or to find a distributor,
please visit our [website](#).