

S 62



Powerful yet elegant, the S62's sleek exterior styling presents a dynamic, agile stance. With an optimised hull form spearheading her efficiency, her MAN V8 1200 engines mean you can experience speeds up to 38 knots. When at anchor her electro-hydraulic bathing platform creates a convenient launch system for a 3.3m tender, a jet ski, or simply a secluded swimming platform.





Her sociable galley aft arrangement features an open-plan dining area with sliding doors and a fully opening window leading out to the cockpit. Below deck, six guests are comfortably accommodated across an en suite full-beam owner's stateroom and two further guest cabins with the option of an additional crew cabin aft.



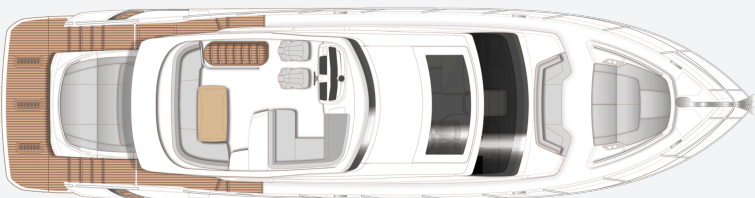


TAKE A VIRTUAL TOUR OF THE S62





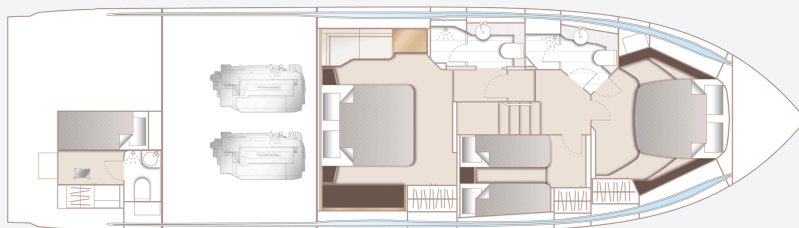
S62
SPECIFICATION



S62 Sportbridge



S62 Main Deck



S62 Lower Deck

PRINCIPAL DIMENSIONS

Length overall (incl. pulpit)	62ft 11in (19.17m)
Length overall (excl. pulpit)	62ft 1in (18.92m)
Beam	16ft 0in (4.87m)
Draft	4ft 9in (1.46m)
Displacement approx. (lightship)	27,200kg (59,957lbs)*
Fuel capacity	715 gal/858 US gal/3,250l
Water capacity (incl. calorifier)	132 gal/159 US gal/603l

ENGINES

Twin MAN V8-1200 (2 x 1200mhp)	Speed range: 36-38 knots†
---	------------------------------

FULL SPECIFICATION

DECK FITTINGS

- Teak-laid transom platform, cockpit deck, sportbridge stairway and steps to side deck
- Reversible electric anchor winch with foredeck and helm position controls
- Stemhead roller with automatic anchor launch and retrieve
- Self-stowing (32kg/77lb) Delta anchor with 40m of chain
- Bow rope storage locker
- Freshwater deck/anchor wash
- Walk through coach-roof seating area
- Foredeck sunbathing area
- Deck storage locker for fenders and ropes
- Stainless steel bow, stern and spring cleats (8)
- Stainless steel pulpit and guardrails
- Stainless steel coach-roof handrails
- Foredeck hatch
- PVC rubbing band with stainless steel insert
- LED deck level lighting
- Full set of IMCO navigation lights
- Riding light
- Searchlight with remote control

- Illuminated crown logo to transom
- Twin electric horns
- Fuel and water fillers
- Ensign socket and staff

COCKPIT AND BATHING PLATFORM

- Self-draining
- U-shaped seating/dining area with folding teak table
- Sunbed aft
- LED overhead and deck level lighting
- Stainless steel handrails
- Garage (to take tender up to 3.3m) with electro-hydraulic door and tender launch system with electric winch
- Liferaft stowage locker
- Rope stowage lockers
- Lockable gas strut assisted hatch to lazarette
- Lockable gas strut assisted hatch to lazarette/optional crew cabin
- Lockable gas strut assisted hatch to engine room
- Locker containing remote fuel cocks, manual

- bilge pump with valve chest and manual controls for automatic fire extinguishers
- Twin transom doors leading to bathing platform
- Electro-hydraulic raise/lower teak laid bathing platform (450kg SWL)
- Retractable bathing ladder (manual) in side of hydraulic platform
- Transom steps to access stern from bathing platform when in lowered position
- Hot and cold transom shower
- Marine audio system with radio and streaming capabilities with waterproof speakers
- 220/240v shore support inlet in locker
- Tonneau canvas cover

SPORTBRIDGE

- Twin helm seats with fore and aft adjustment for helmsman
- Instrument console with dual station controls and 9" colour multifunctional display incorporating engine instruments, fuel gauges, alarms and rudder position indicator (see Lower Helm Position)

- 16" colour mfd screen incorporating GPS/ Chartplotter, log and echo sounder
- Adjustable steering wheel
- Drinks holders
- Wetbar with sink, storage, top loading coolbox and optional barbeque
- Aft L-shaped upholstered seating
- Teak folding table
- Upholstered L-shaped companion seating (converts to sunpad)
- Marine audio system with radio and streaming capabilities with waterproof speakers
- Clear view hatch to aft cockpit
- Wind deflector screens
- Stainless steel handrails
- LED deck level lighting
- GRP radar arch
- Matched whip aerials for VHF R/T and radio
- Console and seat covers
- Optional folding bimini with manual/ electro hydraulic operation

HELM POSITION

- Twin helm seats with fore and aft adjustment for helmsman
- Instrument console with dual station controls

- and 9" colour multifunctional display incorporating engine instruments, fuel gauges, alarms and rudder position indicator
- 16" brilliant colour mfd multi-function display incorporating GPS/chartplotter, log and echo sounder
- Dual station instruments and controls at Sportbridge and Lower Helm Positions:
 - power-assisted electro-hydraulic steering
 - adjustable steering wheel
 - rudder position indicator
 - high-speed magnetic compass
 - electronic engine controls
 - trim tab controls with indicators
 - bow thruster control
 - electric anchor winch remote control
 - autopilot
 - VHF with DSC R/T with intercom
 - remote control searchlight
 - horn button
- Drinks holders
- Toughened glass screen (clear for night vision)
- Windscreen wipers with freshwater windscreen wash
- Exterior black mesh windscreen covers
- Bilge pump controls with visual pump running

warnings

- 24v and 240v electrical control panel
- Riding light, helm and navigation light control switches
- USB connection point
- LED overhead lighting (24v) and night lighting
- Electric drop window
- Timber flooring - V grooved planked

SALOON

- U-shaped sofa
- Coffee table
- Sideboard unit with bottle and glass storage
- Refrigerator
- 50" UHD LED TV on rise and fall
- Fusion Apollo MS-RA770 Audio stereo system paired with Focal 100 ICW5 speakers (4)
- Electric drop window to port
- Blinds or sunscreens to all windows and doors
- LED overhead and concealed lighting (24v)
- Access stairway to lower accommodation
- Skylights with reflecto-glass and sliding blinds (option of powered opening roof)
- Fitted carpet

DINING AREA

- L-shaped sofa
- Folding dining table
- Stainless steel framed sliding door to cockpit with integrated hinging window aft of galley
- Blinds or sunscreens to all windows and doors
- LED overhead and concealed lighting (24v)
- Timber flooring (planked)

GALLEY

- Solid surface counter top
- 4-zone ceramic hob
- Extractor fan
- Combination microwave/convection oven with grill
- Stainless steel sink with mixer tap
- Full height fridge/freezer (270l)
- Waste bin
- Drawers and storage cupboards
- Blinds or sunscreens to all windows and doors
- LED overhead and task lighting (24v)
- 220/240v outlets (4)
- Timber flooring (planked)

ACCOMMODATION

- All cabins and bathrooms feature opening portholes
- All cabins feature 220/240v power points
- All bathrooms feature electric freshwater toilets and 240v shaver points

OWNER'S STATEROOM

- Large double bed with drawers below
- Twin bedside tables
- Wardrobes with hanging and drawer storage
- Dressing table
- Mirror
- Sofa
- Storage lockers and drawers
- 43" UHD LED TV
- Fusion MS-RA670 audio system paired with Fusion 6" CL602 (2) speakers
- Panoramic windows including opening porthole
- Curtains or blinds
- LED overhead and concealed lighting (24v)
- Individual berth lights
- 220/240v outlets (2)
- USB charging point
- Fitted carpet

EN-SUITE BATHROOM

- Wash basin with solid surface counter top
- Mirror
- Storage lockers
- Shower compartment with automatic pump out
- Extractor fan
- Window with opening porthole
- Manual tension venetian blind
- LED overhead and concealed lighting (24v)
- Bathroom accessories
- Solid surface flooring

FORWARD STATEROOM

- Large double bed with drawers below
- Wardrobe with shelves
- Dressing table
- Mirror
- Storage lockers
- Window with opening porthole
- Manual tension venetian blind
- Deck hatch
- LED overhead and concealed lighting (24v)
- Individual berth lights
- 220/240v outlets (2)
- USB charging point
- Fitted carpet

EN-SUITE BATHROOM

- Wash basin with solid surface counter top
- Mirror
- Storage lockers
- Shower compartment with automatic pump out
- Extractor fan
- Window with opening porthole
- Manual tension venetian blind
- LED overhead and concealed lighting (24v)
- Bathroom accessories
- Solid surface flooring
- Access door from passageway

STARBOARD GUEST CABIN

- Two single beds with drawers below (with option of double bed conversion)
- Bedside table
- Wardrobe with shelves
- Mirror
- Storage lockers and drawers
- Window with opening porthole
- Manual tension venetian blind
- LED overhead and concealed lighting (24v)
- Individual berth lights
- 220/240v outlets (2)
- USB charging point

- Fitted carpet

OPTIONAL CREW CABIN (IN PLACE OF AFT LAZARETTE)

- Single bed with storage below
- Wardrobe with shelf
- Mirror
- Wash basin with solid surface counter top
- Storage lockers
- Opening porthole
- LED overhead lighting (24v)
- Individual berth light
- 220/240v outlet (1)
- Non-slip safety flooring

EN-SUITE BATHROOM

- Shower with automatic pump out
- Extractor fan
- LED overhead lighting (24v)
- Bathroom accessories

POWER AND DRIVE SYSTEMS

- 5-bladed propellers in nickel aluminium bronze
- Bow thruster (130kgf/287lbf) with dual-station controls
- Engine room lighting

- Engine room access hatch and ladder
- Power-assisted electro-hydraulic steering system
- Trim tabs with indicators
- Electronic engine and gear shift controls
- Engine room extractor fan with electronic time delay
- Fresh water supply point in engine room
- Dripless self-aligning shaft seals

ELECTRICAL SYSTEMS

24 Volt:

- 4 x heavy duty batteries for engine starting
- 4 x heavy duty auxiliary batteries
- 1 x generator battery
- Battery link facility with remote control at helm position
- Both battery banks are charged using a voltage sensitive relay that parallels both battery banks when a charging source is present
- 60 amp battery charger charges both banks of batteries via an automatic switch charging system
- Remote battery master switches with control switch at main switch panel
- Circuit breakers on all circuits

- 12v voltage dropper for certain navigation and radio circuits

220/240 Volt:

- 11Kw diesel generator in own sound shield with water cooled specially silenced exhaust
- Automatic fire extinguisher situated by generator
- 50 amp shore support inlet
- Generator/shore support change-over switch
- Polarity check system
- Earth leakage safety trip
- Circuit breakers on all circuits
- Power points in: owner's stateroom, guest cabins, galley and saloon area
- Shaver points in all bathrooms

FUEL SYSTEM

- Twin fuel tanks (in NS8 marine grade alloy) with interconnection system giving 715 gal / 858 US gal / 3,250l
- Fuel fillers on port and starboard side decks
- High-capacity duplex fuel filters with water traps with change-over valves, water warning sensors connected to warning lights at lower helm

- Remote fuel cocks in cockpit locker
- Fuel gauges at main helm console

WATER SYSTEM

- Water tanks totalling 116 gal / 159 US gal / 530l plus 16 gal / 19 US gal / 73l hot water calorifier
- Water heated by engines and 240v immersion heater
- Automatic water pump with filter
- Main circuit breaker at switch panel
- Water level gauge
- Deck filler
- Electric freshwater toilet system with 55 gal / 66 US gal / 250l holding tank, content gauge and low noise manual overboard discharge, with macerator backup system as well as dockside discharge system

FIRE EXTINGUISHERS

- Automatic/manual override fire extinguishers in engine room with warning system at helm position
- Hand-operated fire extinguishers (5) in owner's stateroom, forward and starboard guest cabins, galley and helm position
- Additional extinguisher fitted when optional aft

cabin is specified

BILGE PUMPS

- Automatic/manual override electric bilge pumps in engine room (2), rudder area, lazarette and forward accommodation (6 in all)
- High-capacity manual bilge pump with valve system and suction points in same areas
- Electric bilge pumps have controls and warning lights at main helm and warning light with audible alarm at sportbridge helm

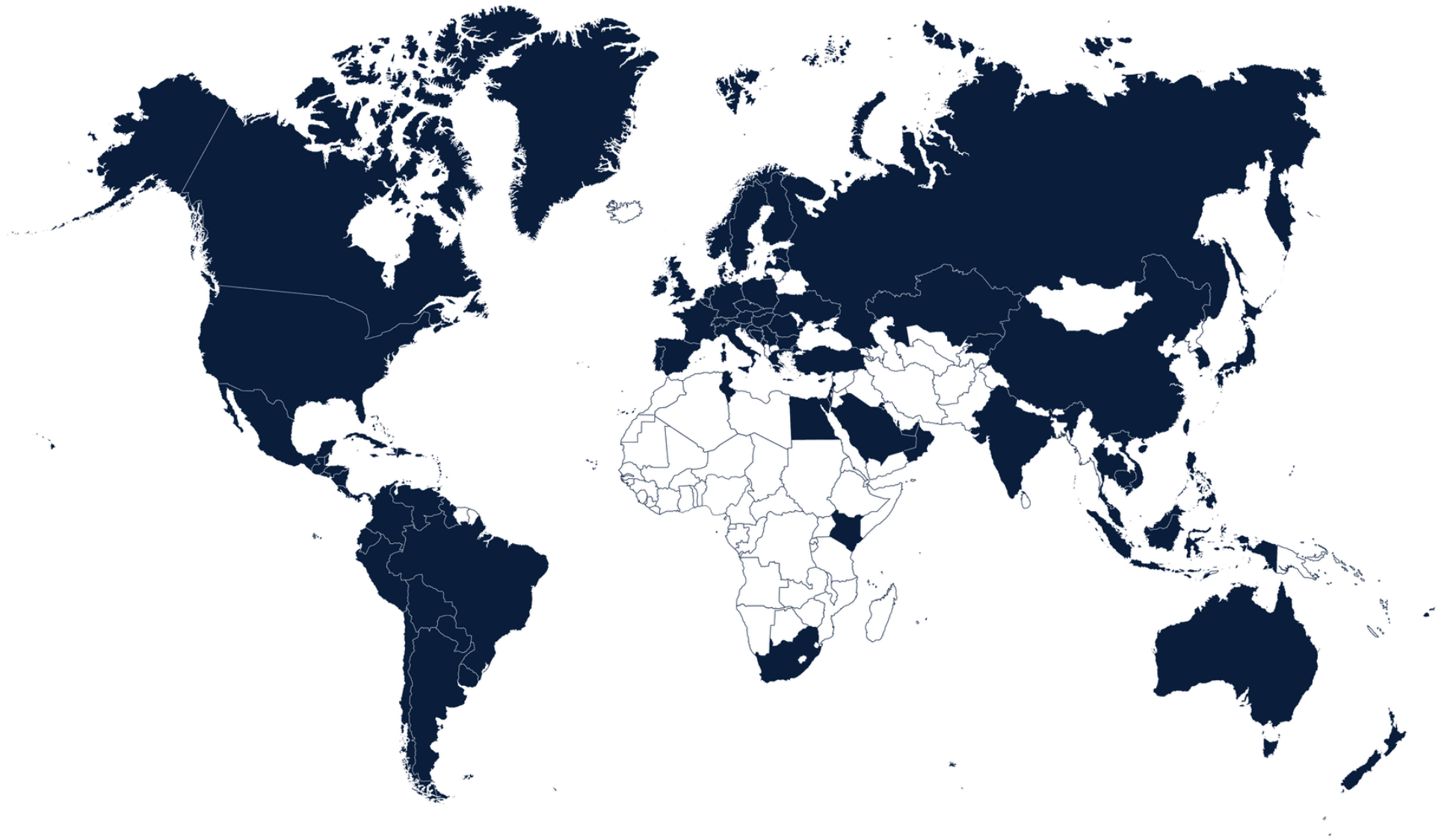
OTHER STANDARD EQUIPMENT

- Ensign staff
- Fenders (6)
- Mooring warps (4)
- Boat hook
- First-aid kit
- Tool kit
- Owner's manual and engine manual
- Quilted bed covers supplied to all cabins (except optional crew cabin)
- Ship's document case
- Anchor winch back up handle

FINISHES

- Teak-laid decks to transom platform, steps to side decks, cockpit deck steps to sportbridge, sportbridge and steps to side decks
- Timber-laid floor to galley and dining area, planked
- Furniture in choice of Rovere Oak or Alba Oak in satin lacquer finish as standard. Silver Oak or Walnut in satin or gloss lacquer finishes available as an option
- Solid surface floors in all bathroom suites in guest accommodation
- Solid surface counter tops in all bathroom suites in guest accommodation
- Galley counter top in solid surface
- Choice of high-quality carpet and upholstery fabric from extensive range
- Blinds or sunscreens to all windows and portholes
- Optional crew cabin has non-slip safety flooring, crew bathroom has white solid surface counter tops

GLOBAL COVERAGE





THANK YOU

For more information or to find a distributor,
please visit our [website](#).