



S 66



There is an undeniable presence about the new S66. Her slender streamlined form somehow also exudes a predatory air. A lightweight deep-V hull delivers on this promise with breath-taking agility up to 38 knots. When at anchor, peacefulness descends onto her generously appointed deck areas, which include a spacious foredeck seating area, whilst her hydraulic bathing platform and 3.3m tender garage become the perfect base for watersports.





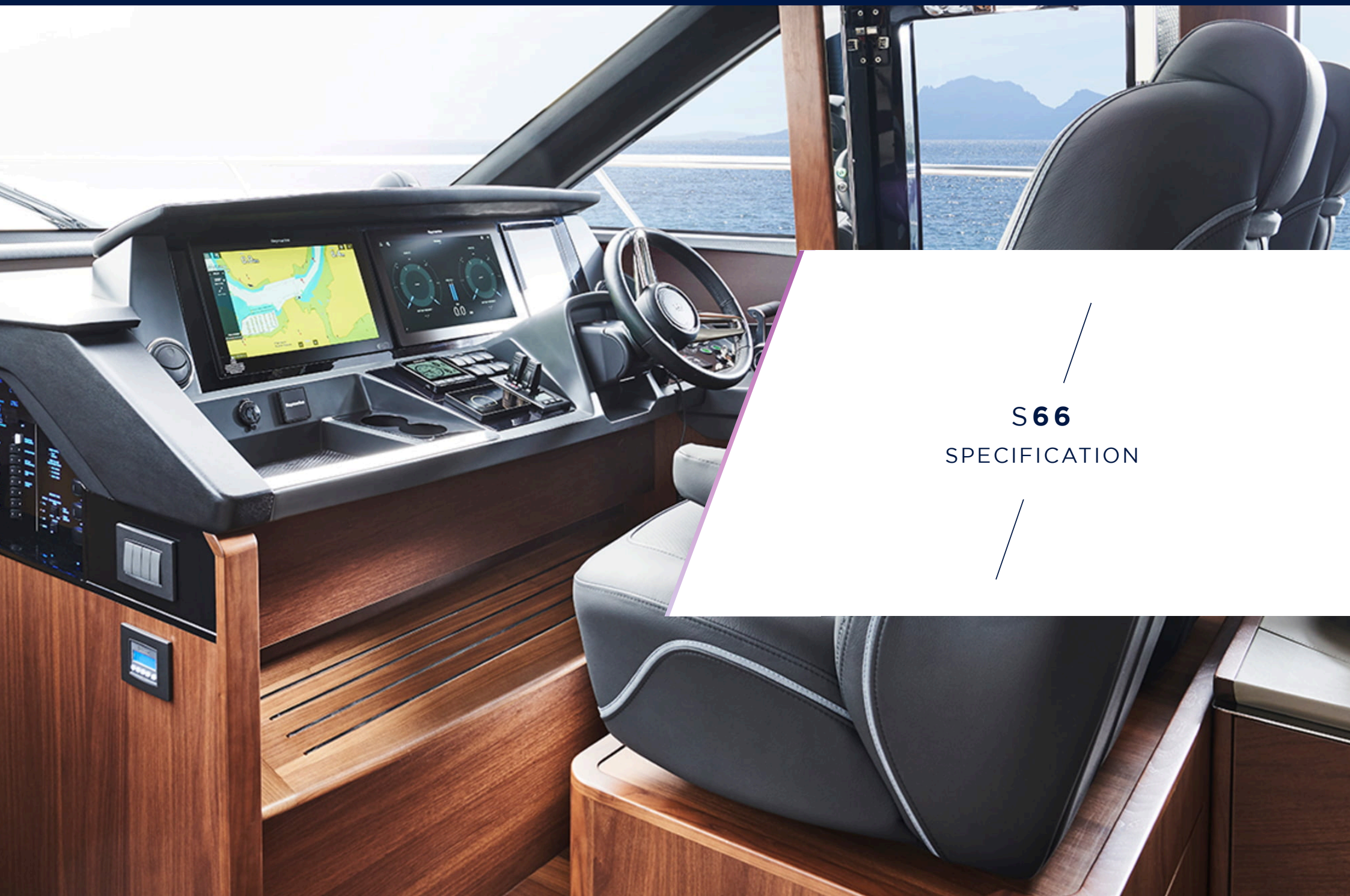
Captivating on the outside, she is distinctively cool inside. Her sociable galley aft arrangement, with opposing open-plan dining area, has sliding doors and a fully opening electric window leading out to the cockpit to create an al fresco bar. Below deck eight guests are accommodated across four cabins, three of which are en-suite.



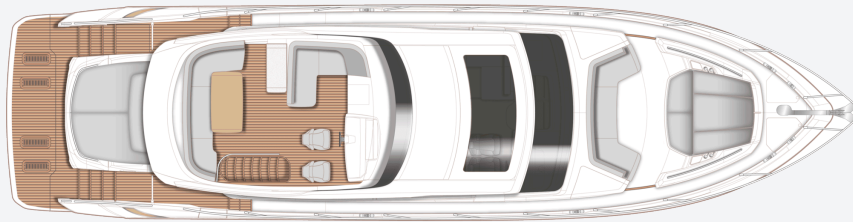


TAKE A VIRTUAL TOUR OF THE S66

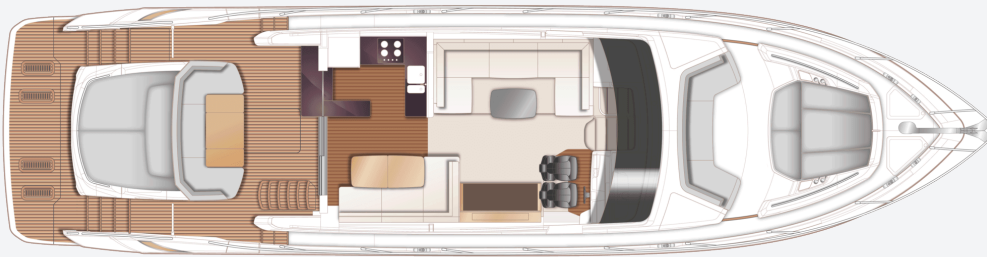




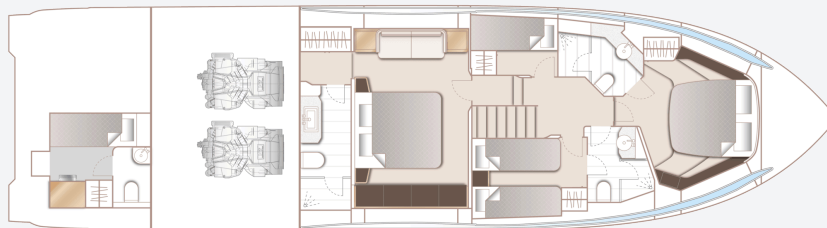
S66
SPECIFICATION



S66 Sportbridge



S66 Main Deck



S66 Lower Deck

PRINCIPAL DIMENSIONS

Length overall (incl. pulpit)	66ft 10in (20.32m)
Length overall (excl. pulpit)	65ft 11in (20.03m)
Beam	16ft 9in (5.08m)
Draft approx.	4ft 9in (1.47m)
Displacement approx. (lightship)	30,500 kg (77,162lbs)*
Fuel capacity	902 gal/1,083 US gal/4,100l
Water capacity (inc. calorifier)	192 gal/230 US gal/873l

ENGINES

Twin MAN V12-1400 (2 x 1,400mhp)	Speed range: 36-38 knots [†]
---	--

FULL SPECIFICATION

DECK FITTINGS

- Teak-laid transom platform, cockpit deck, sportbridge stairway, sportbridge and steps to side deck
- Reversible electric anchor winch with foredeck and helm position controls
- Stemhead roller with automatic anchor launch and retrieve
- Self-stowing (40kg/88lb) Delta anchor with 60m of chain
- Bow rope storage locker
- Freshwater deck/anchor wash
- Walk through coachroof seating area
- Foredeck sunbathing area with cushions and integrated adjustable headrests
- Deck storage lockers for fenders and foredeck sunbed cushions
- Stainless steel bow, stern and spring cleats (8)
- Stainless steel pulpit and guardrails
- Stainless steel coachroof handrails
- Foredeck hatch
- PVC rubbing band with stainless steel insert
- LED deck level lighting

- Full set of IMCO navigation lights
- Riding light
- Searchlight with remote control
- Illuminated crown logo to transom
- Twin electric horns
- Fuel and water fillers

COCKPIT AND BATHING PLATFORM

- Self-draining
- U-shaped seating/dining area with folding teak table
- Sunbed aft
- LED overhead and deck level lighting
- Stainless steel handrails
- Garage (to take tender up to 3.3m) with electro-hydraulic door and tender launch system with electric winch
- Liferaft stowage locker
- Rope stowage lockers
- Lockable gas strut assisted hatch to lazarette
- Lockable gas strut assisted hatch to lazarette/optional crew cabin
- Lockable gas strut assisted hatch to engine

room

- Locker containing remote fuel cocks, manual bilge pump with valve chest and manual controls for automatic fire extinguishers
- Twin transom doors leading to bathing platform
- Electro-hydraulic raise/lower teak laid bathing platform (550kg SWL)
- Retractable bathing ladder (manual) in side of hydraulic platform
- Transom steps to access stern from bathing platform when in lowered position
- Hot and cold transom shower
- Fusion Signature 6.5" (2) speakers linked to saloon with local control
- 220/240v shore support inlet in locker
- Tonneau cover

SPORTBRIDGE

- Dual station instrumentation and controls (see Lower Helm Position)
- Colour radar and GPS/Chart plotter (2 x 12.1" HD screens)
- Adjustable steering wheel

- Audible and visual alarm for bilge pumps
- Twin helm seats with fore and aft adjustment for helmsman
- Top loading coolbox at helm position
- Wetbar with barbecue, sink, waste bin and storage
- Large U-shaped upholstered seating
- Teak table
- L-shaped seat
- Radio/iPod/MP3 with waterproof speakers
- Clear view hatch to aft cockpit
- Wind deflector screens
- Stainless steel handrails
- LED deck level lighting
- GRP radar arch
- Matched whip aerials for VHF R/T and radio
- Console and seat covers
- Optional bimini with/without electro hydraulic operation

HELM POSITION

- Twin helm seats with fore and aft adjustment for helmsman
- Instrument console with engine instruments and fuel gauges
- Colour radar and GPS/chartplotter (2 x 12.1" HD

- screens)
- Dual station instruments and controls at Sportbridge and Lower Helm Positions:
- power-assisted electro-hydraulic steering
- adjustable steering wheel
- rudder position indicator
- high-speed magnetic compass
- electronic engine controls
- trim tab controls with indicators
- bow thruster control
- electric anchor winch remote control
- autopilot
- speed and distance log
- echo sounder with alarm
- VHF with DSC R/T with intercom
- remote control searchlight
- horn button
- Drinks holders
- Toughened glass screen (clear for night vision)
- Windscreen wipers with freshwater windscreen wash
- Black mesh sunscreens
- Bilge pump controls with visual pump running warnings
- 24v and 240v electrical control panel
- Riding light, helm and navigation light control

- switches
- 12v outlet
- LED overhead lighting (24v) and night lighting
- Pantograph helmsman's side door to starboard side deck
- Timber flooring (planked)

SALOON

- U-shaped sofa
- Coffee table
- Sideboard unit with bottle and glass storage
- Refrigerator
- Icemaker
- UHD LED TV (49") on rise and fall
- Audio stereo system with Blu-ray player and speakers (4)
- Electric drop window to port
- Blinds or sunscreens to all windows and doors
- LED overhead and concealed lighting (24v)
- Access stairway to lower accommodation
- Skylights with reflecto-glass and sliding blinds (option of powered opening roof)
- Fitted carpet

DINING AREA

- L-shaped sofa

- Folding dining table
- Stainless steel framed sliding door to cockpit with integrated hinging window aft of galley
- Blinds or sunscreens to all windows and doors
- LED overhead and concealed lighting (24v)
- Timber flooring (planked)

GALLEY

- Solid surface worktop
- Ceramic 4-zone hob
- Hob extractor
- Combination microwave/convection oven with grill
- Twin-bowl stainless-steel sink with mixer tap
- Dishwasher
- Full height fridge/freezer (270l)
- Waste bin
- Drawers and storage cupboards
- Blinds or sunscreens to all windows and doors
- LED overhead and task lighting (24v)
- 220/240v outlets (4)
- Timber flooring (planked)

ACCOMMODATION

- All cabins and bathrooms feature opening portholes

- All cabins feature 220/240v power points
- All bathrooms feature electric freshwater toilets and 240v shaver points

OWNER'S STATEROOM

- Large double bed with drawers below
- Twin bedside tables
- Wardrobes with hanging and drawer storage
- Dressing table
- Mirror
- Sofa
- Storage lockers and drawers
- 40" UHD LED TV
- Audio stereo system with Blu-ray player and Focal 100 ICW6 speakers (4)
- Panoramic windows including opening porthole with curtains or blinds
- LED overhead and concealed lighting (24v)
- Individual berth lights
- 220/240v outlets (2)
- USB connection point
- Fitted carpet

EN-SUITE BATHROOM

- Washbasin with solid surface worktop
- Mirror

- Storage lockers
- Shower compartment with automatic pump out
- Extractor fan
- Window with opening porthole and venetian blind
- LED overhead and concealed lighting (24v)
- Bathroom accessories
- Flooring in solid surface

FORWARD STATEROOM

- Large double bed with drawers below
- Wardrobe with shelves
- Dressing table
- Mirror
- Storage lockers
- Window with opening porthole and venetian blind
- Deck hatch
- LED overhead and concealed lighting (24v)
- Individual berth lights
- 220/240v outlets (2)
- USB connection point
- Fitted carpet

EN-SUITE BATHROOM

- Washbasin with solid surface worktop

- Mirror
- Storage lockers
- Shower compartment with automatic pump out
- Extractor fan
- Window with opening porthole and venetian blind
- LED overhead and concealed lighting (24v)
- Bathroom accessories
- Flooring in solid surface

STARBOARD GUEST CABIN

- Two single beds with drawers below (with option of double bed conversion)
- Bedside table
- Wardrobe with shelves
- Mirror
- Storage lockers and drawers
- Window with opening portholes and venetian blind
- LED overhead and concealed lighting (24v)
- Individual berth lights
- 220/240v outlets (2)
- USB connection point
- Fitted carpet

EN-SUITE BATHROOM

- Washbasin with solid surface worktop
- Mirror
- Storage lockers
- Shower compartment with automatic pump out
- Extractor fan
- Window with opening porthole and venetian blind
- LED overhead and concealed lighting (24v)
- Bathroom accessories
- Flooring in solid surface
- Day access door from passageway

PORT GUEST CABIN

- Two single beds
- Wardrobe with shelf
- Mirror
- Storage lockers
- Window with opening portholes and venetian blind
- LED overhead and concealed lighting (24v)
- Individual berth lights
- 220/240v outlet (1)
- USB connection point
- Fitted carpet

LOWER ACCOMMODATION LOBBY

- Washer/dryer with storage area above located below companionway stairs (option of separate washing and drying machines if required)

OPTIONAL CREW CABIN (IN PLACE OF AFT LAZARETTE)

- Single bed with storage below
- Wardrobe with shelf
- Mirror
- Opening porthole
- LED overhead lighting (24v)
- Individual berth light
- 220/240v outlet (1)
- Non slip safety flooring

EN-SUITE BATHROOM

- Washbasin with solid surface worktop
- Mirror
- Storage lockers
- Shower with automatic pump out
- Extractor fan
- LED overhead lighting (24v)
- Bathroom accessories

POWER AND DRIVE SYSTEMS

- 5-bladed propellers in nickel aluminum bronze

- Bow thruster (170kgf/375lbf) with dual-station controls
- Engine room lighting
- Engine room access hatch and ladder
- Power-assisted electro-hydraulic steering system
- Trim tabs with indicators
- Electronic engine and gear shift controls
- Engine room extractor fan with electronic time delay
- Fresh water supply point in engine room
- Dripless self-aligning shaft seals

ELECTRICAL SYSTEMS

24 Volt:

- 4 x heavy duty batteries for engine starting
- 4 x heavy duty auxiliary batteries
- Battery link facility with remote control at helm position
- Both battery banks are charged using a voltage sensitive relay that parallels both battery banks when a charging source is present
- 80-amp battery charger
- Remote battery master switches with control switch at main switch panel
- Circuit breakers on all circuits

- 12v voltage dropper for certain navigation and radio circuits

220/240 Volt:

- 13.5Kw diesel generator in own sound shield with water cooled specially silenced exhaust
- Automatic fire extinguisher situated by generator
- 63 amp shore support inlet
- Generator/shore support change-over switch
- Polarity check system
- Earth leakage safety trip
- Circuit breakers on all circuits
- Power points in: Owner's stateroom, guest cabins, galley and saloon area
- Shaver points in all bathrooms

FUEL SYSTEM

- Twin fuel tanks (in NS8 marine grade alloy) with interconnection system giving 4,100 l/902 gal/1,083 US gal capacity
- Fuel fillers on port and starboard side decks
- High-capacity duplex fuel filters with water traps with change-over valves, water warning sensors connected to warning lights at lower helm

- Remote fuel cocks in cockpit locker
- Fuel gauges at main helm console

WATER SYSTEM

- Water tanks totalling 800 l/176 gal/211 US gal plus 73l/16 gal/19 US gal hot water calorifier
- Water heated by engines and 240v immersion heater
- Automatic water pump with filter
- Main circuit breaker at switch panel
- Water level gauge
- Deck filler
- Electric freshwater toilet system with 272l/60 gal/72 US gal holding tank, content gauge and low noise electric overboard discharge, with macerator backup system as well as dockside discharge system

FIRE EXTINGUISHERS

- Automatic/manual override fire extinguishers in engine room with warning system at helm position
- Hand-operated fire extinguishers (6) in owner's stateroom, forward and starboard guest cabins, utility area, galley and helm position
- Additional extinguisher fitted when optional aft

cabin is specified

BILGE PUMPS

- Automatic/manual override electric bilge pumps in engine room (2), ruder area, lazarette and forward accommodation (6 in all)
- High-capacity manual bilge pump with valve system and suction points in same areas
- Electric bilge pumps have controls and warning lights at main helm and warning light with audible alarm at sportbridge helm

OTHER STANDARD EQUIPMENT

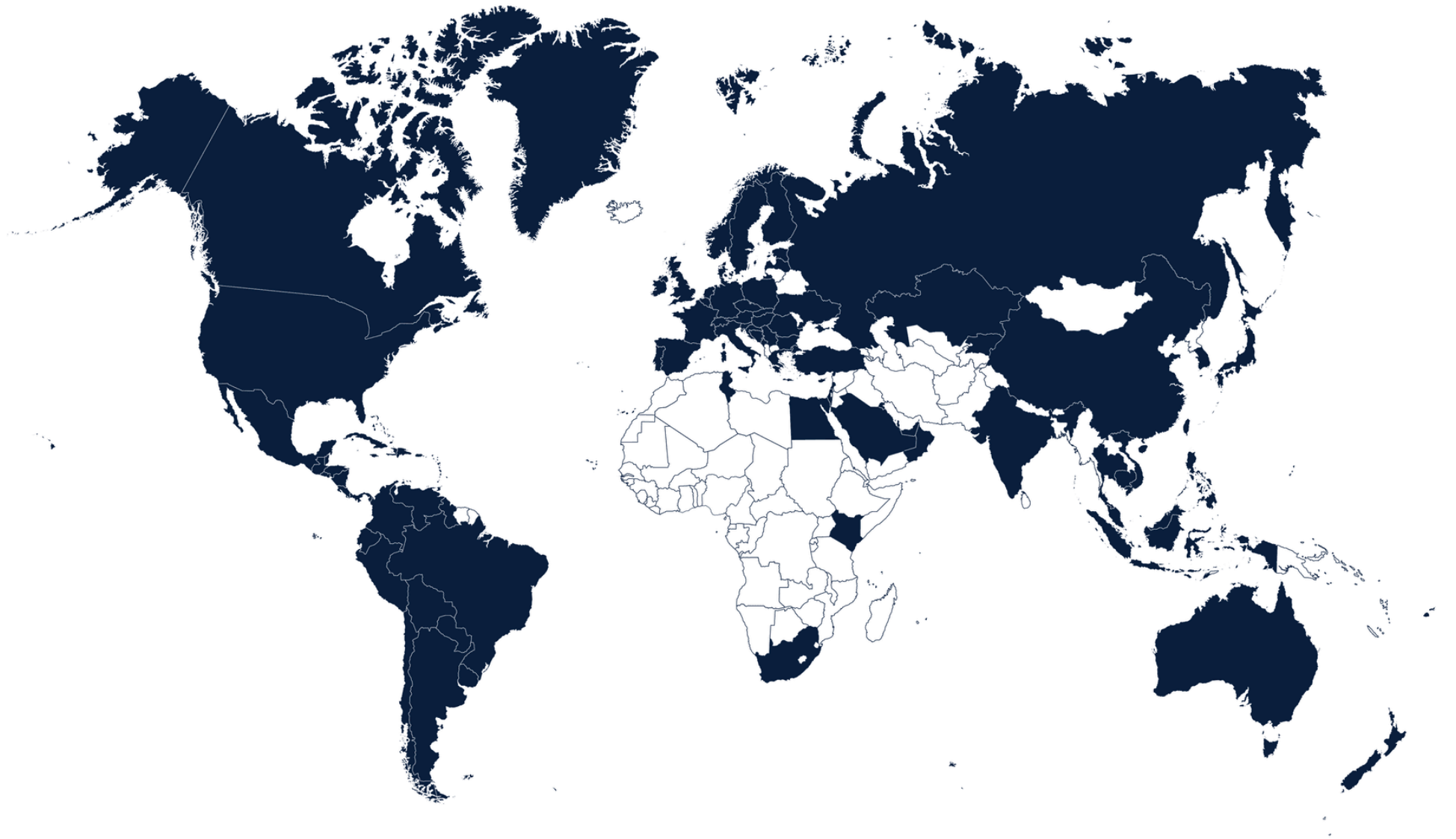
- Ensign staff
- Fenders (6)
- Mooring warps (4)
- Boat hook
- First aid kit
- Tool kit
- Owner's manual and engine manual
- Quilted bed covers supplied to all cabins (except optional crew cabin)
- Set of glassware (8 settings consisting of tumbler and wine glasses)
- Set of Princess china (8 settings consisting of plate, side plate, bowl, cup and saucer)

- Set of cutlery (8 settings of David Mellor "Paris" cutlery 7 pieces) countertops
- Ship's document case
- Anchor winch back up handle

FINISHES

- Teak-laid decks to transom platform, steps to side decks, cockpit deck steps to sportbridge, sportbridge and steps to side decks
- Timber-laid floor to galley and dining area, planked
- Furniture in choice of Rovere Oak or Alba Oak in satin lacquer finish as standard. Silver Oak or Walnut in satin or gloss lacquer finishes available as an option
- Solid surface floors in all bathroom suites in guest accommodation
- Solid surface wash hand basin counter tops in all bathroom suites in guest accommodation
- Galley worktop in solid surface
- Choice of high quality carpet and upholstery fabric from extensive range
- Blinds or sunscreens to all windows and portholes
- Optional crew cabin has non-slip safety flooring, crew bathroom has white solid surface

GLOBAL COVERAGE





THANK YOU

For more information or to find a distributor,
please visit our [website](#).