



S80



The all-new flagship of the S Class range, the Princess S80 features a sleek sporting design with high powered performance and premium craftsmanship. Inspired by urban living, the S80 provides a sense of contemporary elegance, with a single level main deck, flowing furniture and sophisticated detailed interiors. She delivers an excellent driving experience, with twin high performance V12 engines that smoothly transition from displacement to planing within seconds. The sportbridge is perfect for entertaining, with an incredibly large U-shaped seating area, port and starboard companion seating, servery with sink, fridge and barbeque, plus the option of a dining table and triple seats to the helm station.







The cockpit offers unique versatility with configurable seating including adjustable twin upholstered L-shaped seats which can manually slide in-board, outboard and forward facing alongside twin coffee tables and twin aft sun pads which flank the teak-capped stairs leading to the spacious electro-hydraulic bathing platform.

Below deck, eight guests enjoy four beautifully appointed en-suite cabins, all bathed in natural light from elegant hull glazing, with a further twin cabin aft for occasional guests or crew. A dedicated staircase leads from the main deck to the full-beam owner's stateroom amidships, via a private lobby area in the lower companion way.

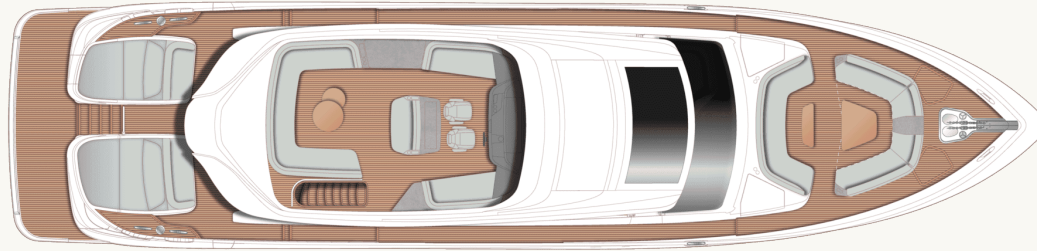




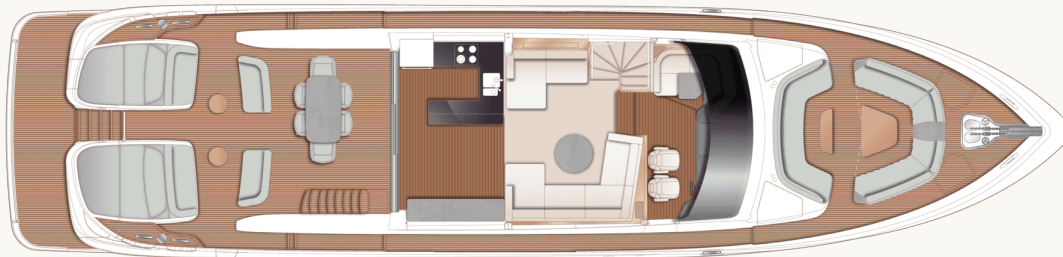
# S80

## Layouts and Specification

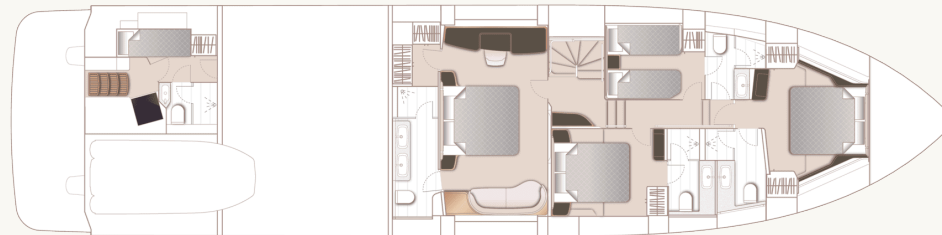




S80 Sportbridge



S80 Main Deck



S80 Lower Deck



## Principal Dimensions

Length overall (incl. pulpit)	83 ft 6 in / 25.44m
Length overall (excl. pulpit)	82 ft 4 in / 25.10m
Beam	19 ft 11 in / 6.07m
Draft	6 ft 0 in / 1.82m
Displacement approx.	63,949 kg / 140,983 lbs*
Fuel capacity	1,430 gal / 1,717 US gal / 7,000 l
Water capacity (excl. calorifier)	326 gal / 391 US gal / 1,480 l
Black water tank	119 gal / 143 US gal / 500 l

## Engines - Diesel

Twin MAN V12-2000 (2 x 2,000mhp)	Maximum speed range - 31-33 knots†
----------------------------------	------------------------------------

## Full Specification

### Deck fittings

- Teak-laid transom platform, transom steps, cockpit deck, stairway to sportbridge, side decks, foredeck & sportbridge areas
- Reversible hydraulic anchor winches with foredeck, main helm and sportbridge controls
- Stemhead roller with automatic anchor launch and retrieve
- Twin anchor system incorporating:
  - Primary anchor - 80kg galvanised Lewmar
  - Claw anchor, with stainless steel Lewmar swivel and 100m of 14mm galvanised anchor chain
  - Secondary anchor - 50kg galvanised Lewmar
  - Claw anchor, with stainless steel Lewmar swivel and 70m of 14mm galvanised anchor chain
- Deck chain stoppers
- Twin electric stern line mooring winches
- 
- Deck hatch access to chain locker, rope locker
- Freshwater deck/anchor wash (with both fore and aft deck outlets)
- Stainless steel foredeck fairleads (1 pair)
- Stainless steel stern fairleads (2 pairs)
- Stainless steel bow cleats (1 pair, port and starboard)
- Stainless steel spring cleats (2 pairs, port and starboard)
- Stainless steel stern cleats (2 pairs, port and starboard)
- Stainless steel transom cleats (1 pair)
- Stainless steel handrails to foredeck and main deck side decks
- PVC rubbing band with stainless-steel insert
- LED deck level lighting
- Full set of IMCO navigation lights
- Twin beam searchlight with remote controls
- Stern docking lights
- Twin electric horns
- Fuel and water fillers
- 
- Loudhailer
- Ensign socket and staff
- Holding tank dockside discharge connection
- Stainless-steel guard rails to foredecks
- Foredeck escape hatch
- Twin coach roof lockers for storage of fenders and ropes
- Foredeck forward-facing U-shaped seating area with optional coffee table
- Foredeck aft-facing U-shaped seating area with central storage locker with (grey porcelain top) and standard coffee table
- Williams tender launch system includes electric winch, rollers and non-slip pads and Williams Sportsjet 435 tender strapping
- Williams Sportsjet 435 tender strapping for use in tender garage

### Cockpit and bathing platform

- Self-draining teak laid deck

- Princess logo in bathing platform teak
- Electro-hydraulic teak laid raise/lower bathing platform (550kg SWL)
- Retractable bathing ladder (manual) in side of bathing platform
- Hot & cold transom shower
- Garage fitout to include electro-hydraulic door and electric winch for tender up to 4.35m
- Space below garage for optional Glendinning equipment
- Single transom gate leading to bathing platform
- Watertight top hinged door giving access from bathing platform into crew area/engine room
- Remote control telescopic passerelle with automatic folding handrails (1.2m overhang)
- Twin aft sun pads with cupholders and backrests/headrests
- Twin forward facing seats
- Twin upholstered aft facing bench seats which can be manually re-positioned if required

- Life raft stowage in port aft sun pad
- Engine room to cockpit escape hatch Integral stairway to sportbridge with teak step treads
- Teak extendable dining table (extends from 6 to 8) with 8 chairs
- Starboard side servery with sink and bin
- Starboard locker containing remote fuel shut-off, manual bilge pump with valve chest and manual controls for automatic fire extinguishers
- LED overhead and deck level lighting
- Stainless-steel oval handrails
- Canvas tonneau cover (Note: shortened to length of stowed cushion position to allow garage and crew access)
- Illuminated crown logo on transom
- 220v/240v shore support inlets (2)

### **Sportbridge**

- Dual station instrument and controls console (see lower helm position)
- Helm position
- Twin upholstered seats with manual fore/aft adjustment for helmsman on moulded seat base

- Drinks holders (2)
- USB charging points (2) (1x USB-A and 1x USB-C)
- Port and starboard companion seating
- Stainless steel capped fly screen
- Teak-laid deck
- Aft U-shaped seating area with coffee table
- Clear view hatch to aft cockpit
- Access stairway to aft cockpit
- Aft-facing moveable upholstered dining-height seat (can be locked in place when positioned behind helm seats), with top-hinge storage unit and countertop aft of helm/navigator seat
- Portside servery with sink/tap, barbecue, drawer fridge and bin. Worktop is grey porcelain.
- LED deck level lighting
- Radar mast
- Twin matching whip aerials for VHF R/T radio
- Covers to exterior furniture

Covers to exterior furniture

Optional dining table

- Optional GRP hardtop with dimmable LED lighting

### Helm position

- Lower helm with fixed height captain's leather upholstered seat with manual fore and aft adjustment.
- Fixed navigator seat
- Helm seats Incorporates manual fold down foot rest (Optional fixed third helm seat)
- U-shaped companion seating to port with dining-height table
- Instrument console with display incorporating engine instruments, optional CCTV, fuel gauges, alarms and rudder position indicator
- Dual station instrument and controls console at lower helm position/sportbridge
- power-assisted electro-hydraulic steering (Seastar)
- adjustable Pininfarina steering wheel
- high-speed magnetic compass
- electronic engine controls

- bow thruster control
- hydraulic anchor winch remote control
- colour radar (with scanner) and GPS/chart plotter(s) (twin 15.6" displays)
- 1 x 15" Böning display
- audible and visual alarm engine warning system
- autopilot
- speed and distance log
- echo sounder with alarm
- VHF with DSC R/T with intercom
- remote control dual searchlight
- horn button (to operate twin electric horns)
- audible and visual alarm for bilge pumps (via Böning)
- engine room fire extinguisher warning system

- Automatic fog horn with loudhailer
- Chart storage
- Drink holders (2)
- Toughened glass screen (clear for night vision) with windscreen de-mist system
- Windscreen wipers with freshwater windscreen wash

- Black mesh sunscreens
- Bilge pump controls with visual pump running warnings
- 24v and 240v electrical control panel Riding light, helm and navigation light control switches
- Dimmable LED overhead/concealed lighting (24V) with night lighting & scene selection
- V-groove planked timber-laid flooring (including steps to saloon)
- 220/240v outlets (1)
- USB charging points (2) (1x USB-A and 1x USB-C)
- Watertight pantograph door giving direct access from starboard side deck
- Electric drop window to port

### Saloon

- Large sofa to starboard with storage below
- Sofa to port with crockery storage draw
- Coffee table
- No skylight/skylight blinds to saloon area as standard

- Panoramic tinted toughened glass windows port and starboard
- Manual sheer roller blinds to all outboard windows (not including helm area)
- 55" LED TV on rise and fall
- Naim Uniti Atom audio system with speakers (2) and subwoofer
- Dimmable LED overhead/concealed lighting (24V) with scene selection
- 220/240v outlets (2)
- USB charging points (4) (2x USB-A and 2x USB-C)
- Onboard ethernet router & 4G internet modem
- Access stairway to lower accommodation
- Fitted carpet

### **Galley**

- Granite/quartz worktop
- Galley units in HPL
- Miele 4-zone induction hob
- Hob extractor fan
- Miele combination convection oven with

- grill/microwave
- Sub-zero single full height refrigeration units with deep freeze drawers
- Miele slimline dishwasher
- 1.5 bowl stainless-steel sink with mixer tap
- Chopping board & storage
- Twin waste bin
- High and low-level storage cupboards and drawers
- Cutlery storage
- 220/240v power outlets (4)
- LED overhead & task lighting (24V)
- Manual sheer roller blinds to windows
- V-groove planked timber-laid flooring
- Starboard side sideboard containing storage units, glass storage, icemaker and refrigeration
- 3-panel stainless-steel framed cockpit doors, opening to starboard side, with port side window opening
- Manual skysol blind aft patio doors and adjacent windows

### **Accommodation**

- All cabins and bathrooms feature opening portholes and air conditioning
- All cabins feature 220/240v power points
- All en-suites feature 240v shaver points

### **Owner's stateroom**

- Large double bed with bedside tables and drawers below
- Dressing area with full length mirror, hanging, shelf and drawer storage
- Built-in safe
- Port side dressing table with integrated mirror, chair, storage drawers and cupboards
- Starboard side sofa with storage drawers to forward bulkhead
- 55" LED TV
- Naim Uniti Atom audio system with speakers (2) and subwoofer
- Panoramic windows including opening portholes
- Manual Venetian blinds to hull windows
- Dimmable LED overhead/concealed lighting (24V) with scene selection

- (24V) with scene selection
- 220/240v outlets (2)
- USB charging points (4) (2x USB-A and 2x USB-C)
- Fitted carpet

#### En-suite bathroom

- Electric freshwater toilet
- Twin wash basins and vanity top in thermoformed Solid Surface
- Bathroom cabinets in interior boat timber choice (please specify), with chrome bathroom hardware
- Mirror
- Storage lockers
- Shower compartment with automatic pump out
- Extractor fan
- Heated towel rail
- Window with opening porthole
- Manual tension Venetian blind
- LED overhead and concealed lighting (24V)
- Bathroom accessories
- Solid Surface flooring, with synthetic teak

accents (weathered) applied to feature shower bulkheads and shower floor

#### Forward stateroom

- Large double bed with bedside tables and drawers below
- Built-in safe
- Twin double wardrobes
- Port side dressing table with integrated mirror, stool and storage drawers
- 43" LED TV
- Naim Uniti Atom audio system with speakers (2)
- Panoramic windows including opening portholes
- Manual Venetian blinds to hull windows
- Dimmable LED overhead/concealed lighting (24V) with scene selection
- 220/240v outlets (2)
- USB charging points (4) (2x USB-A and 2x USB-C)
- Fitted carpet

#### En-suite bathroom

- Electric freshwater toilet
- Wash basin and vanity top in thermoformed Solid Surface
- Bathroom cabinets in interior boat timber choice (please specify), with chrome bathroom hardware
- Mirror
- Storage lockers
- Shower compartment with automatic pump out
- Extractor fan
- Window with opening porthole
- Manual tension Venetian blind
- LED overhead and concealed lighting (24V)
- Bathroom accessories
- Solid Surface flooring, with synthetic teak accents (weathered) applied to feature shower bulkheads and shower floor

#### Port guest cabin

- Two single beds with drawers below
- Bedside table

- Bedside table
- Wardrobe with shelves
- Mirror
- Storage lockers
- Window with opening portholes
- Manual Venetian blinds to hull window
- Dimmable LED overhead/concealed lighting (24V) with scene selection
- Individual berth lights
- 220/240v outlets (1)
- USB charging points (2) (1x USB-A and 1x USB-C)
- Fitted carpet

#### En-suite bathroom

- Electric freshwater toilet
- Wash basin and vanity top in thermoformed Solid Surface
- Bathroom cabinets in interior boat timber choice (please specify), with chrome bathroom hardware
- Mirror
- Storage lockers
- Shower compartment with automatic pump out

- out
- Extractor fan
- Windows with opening porthole
- Manual tension Venetian blind
- LED overhead and concealed lighting (24V)
- Bathroom accessories
- Solid Surface flooring, with synthetic teak accents (weathered) applied to feature shower bulkheads and shower floor

#### Starboard guest cabin

- Double bed with drawers below
- Bedside table
- Dressing table with stool
- Wardrobe with shelves
- Mirror
- Storage lockers
- Window with opening portholes
- Manual Venetian blinds to hull windows
- Dimmable LED overhead/concealed lighting (24V) with scene selection
- Individual berth lights
- 220/240v outlets (1)
- USB charging points (2) (1x USB-A and 1x

USB-C)

Fitted carpet

#### En-suite bathroom

- Electric freshwater toilet
- Wash basin and vanity top in thermoformed Solid Surface
- Bathroom cabinets in interior boat timber choice (please specify), with chrome bathroom hardware
- Mirror
- Storage lockers
- Shower compartment with automatic pump out
- Extractor fan
- Windows with opening porthole
- Manual tension Venetian blind
- LED overhead and concealed lighting (24V)
- Bathroom accessories
- Solid Surface flooring, with synthetic teak accents (weathered) applied to feature shower bulkheads and shower floor

#### Lobby / passageway area

- \_ Linen cupboard below companionway stairs
- \_ Top-loading storage unit outboard in window side liner
- \_ Sideboard with mirror above
- \_ Combination washer/dryer located below companionway stairs
- \_ Dimmable LED overhead/concealed lighting (24V)
- \_ Fitted carpet
- \_ Manual roller blind to window

### **Crew cabin**

- Access to engine room
- Twin bunk beds with storage below
- Wardrobe
- Mirror
- Storage locker
- Opening porthole
- Mono-command Venetian blind
- LED overhead lighting (24V)
- Individual berth light (2)
- 220/240v outlets (1)

- USB charging points (2) (1x USB-A and 1x USB-C)
- Non-slip safety flooring

### **Crew bathroom**

- Electric freshwater toilet
- Washbasin with Koko White (gloss finish) Solid Surface vanity top
- Mirror
- Storage lockers
- Shower compartment with automatic pump out
- Extractor fan
- LED overhead lighting (24V)
- Bathroom accessories
- Solid Surface flooring in Koko white (satin finish)

### **Crew area**

- Access from transom door
- Hanging rails
- Storage locker
- LED overhead lighting (24V)

- Non-slip safety flooring
- Optional crew microwave and fridge (not available with SEABOB storage)
- Optional SEABOB storage (not available with microwave and fridge)
- Optional third berth
- Crew area is in gloss white laminate finish

### **Power and drive systems**

- Forward and aft engine room bulkheads and engine room deck head integrally bonded including insulation with acoustafoam layers (Ref: Development Standard DS876)
- High volume air intakes
- Engine room extractor fan with electronic time delay
- Engine exhaust silencers and water-cooled exhausts
- Engines flexibly mounted
- Automatic fire extinguisher with remote override control
- Automatic and manual bilge pumps
- Propeller shafts in Marinemet



- 5-bladed propellers in nickel aluminium bronze
- High speed balanced rudders
- Cathodic protection for stern gear
- Stern gear, engines, fuel tank fillers, etc all electrically bonded
- LED Engine room lighting
- Engine room access from transom (via crew area) and cockpit deck hatch
- Power-assisted electro-hydraulic steering system
- Electronic engine and gear shift controls
- Bow thruster with dual-station controls (310KgF)
- Fresh water supply point in engine room
- Dripless self-aligning shaft seals

### Electrical systems

#### 24 Volt

- 4x heavy duty engine start battery
- 6x heavy duty auxiliary batteries
- 2x heavy duty generator start batteries
- Battery link facility with remote control at

- main switch panel position
- Both battery banks are charged using a voltage sensitive relay that parallels both battery banks when a charging source is present
- 1 x 100A charger, 1x 100A-3500W charger/inverter & 1x 10A charger (for generator batteries)
- Circuit breakers on all circuits
- 24v to 12v converters for certain navigation and radio circuits
- 24v to 240v/50Hz inverter for saloon a/v and galley fridge
- Galvanic isolation system
- Princess Connect telemetry and maintenance system
- 

#### 220/240 Volt

- European specification: Standard 2x 27kW @ 50Hz with optional upgrade up to 2 x 28kW @ 50Hz diesel generators in own sound

- shields, water cooled and with specially silenced exhaust systems and with remote operation from main control panel
- USA specification: Standard 2x 29kW @ 60Hz with optional upgrade up to 2 x 32kW @ 60Hz diesel generators in own sound shields, water cooled and with specially silenced exhaust systems and with remote operation from main control panel
- 220/240v shore power inlets (2x 63amp single phase)
- Shore power/generator change over control operated from main control panel
- Polarity check system
- Earth leakage safety trip, circuit breakers on all circuits
- Power points (240v) in all cabins and living areas, helm position and galley
- 240v shaver points in washrooms
- 2kW immersion heaters for fresh water (2)
- 
- 

### Fuel system

- Main fuel tank with a total of 7000 litres fuel

capacity – (8800 litres if long range fuel tank is specified.)

- Fuel fillers to port and starboard
- High capacity duplex fuel filters/water traps with integral changeover valves and water sensors connected to alarms at helm position
- Remote fuel isolation controls in cockpit locker for main engines and generators
- Fuel gauges at helm position

#### **Air conditioning system**

- Air conditioning/heating reverse cycle (chilled water)
- 162,000 BTU fan capacity with 144,000 BTU chiller capacity suitable for temperatures to 40°C (tropical) incorporating a windscreen demist facility
- Outlets in all areas

#### **Water system**

- Fresh water tanks giving 1400 litres capacity plus 200 litres hot water calorifier

- Automatic water pump with filter (80l/min)
- Water level gauge
- Deck filler
- Pump control at helm positions
- Electric freshwater toilet system linked to 540 litres holding tank, content gauge and low noise electric overboard discharge, with macerator backup system as well as dockside discharge system

#### **Extinguishers/fire control systems**

- Automatic engine room fire extinguisher system (with manual override) and warning system at helm position providing automatic shutdown of engines, generators and ventilation fans
- Hand operated fire extinguishers in all guest cabins, galley, crew quarters and sportbridge
- Smoke detector (and heat detector as required) on each deck (10-year battery life)
- Automatic under helm fire extinguisher at lower helm

#### **Bilge pumps**

- Automatic/manual override electric bilge pumps in engine room, lazarette area and forward accommodation
- High capacity manual bilge system with suction points in the same areas
- Electric bilge pumps have controls and warning lights with audible alarm at helm position

#### **Other standard equipment**

- Ensign staff
- Fenders (8)
- Mooring warps (4)
- First Aid Kit
- Set of towels (8 large, 8 hand)
- Bed cover supplied to all cabins (except crew cabin)
- Complete set of Lucrezia crystal glassware (8 settings consisting of tumbler, highball and wine glasses)
- Set of Sous Le Soleil crockery (8 settings)

- consisting of plate, cake plate, dessert plate, bowl, cup & saucer)
- Set of stainless-steel cutlery (8 settings of David Mellor "Paris" cutlery - 7 pieces)
- Tool kit
- Boat hook
- Owner's manual and engine manual
- Ship's document case

### **Finishes**

- Teak-laid decks to all external deck areas (including sportbridge)
- V-groove planked timber-laid floor to galley and lower helm position
- Furniture in Rovere oak with satin finish as standard. Optional finishes include ash or silver oak with a satin finish or walnut wood in a satin or gloss finish
- Solid Surface floors in all bathroom suites in guest accommodation and optional day head
- Thermoformed Solid Surface wash basin vanity tops in all bathroom suites in guest accommodation and optional day head

- Bathroom cabinets in interior boat timber choice (please specify), with chrome bathroom hardware as standard in all guest bathrooms and optional day head (excluding crew bathroom)
- Synthetic teak accents (weathered) applied to feature shower bulkheads and shower floor in guest ensembles
- Galley counter top in granite or quartz
- Choice of high-quality carpets and fabrics from an extensive range
- Exterior upholstery to be selected from the Comfort Exterior fabric range (no contrast)
- Blinds to all windows and portholes (excludes helm and pantograph doors)
- All lower crew furniture is in gloss white laminate, with Solid Surface bathroom floor and vanity top
- Crew cabins have non-slip safety flooring
- Non-slip safety flooring to crew mess and passageway