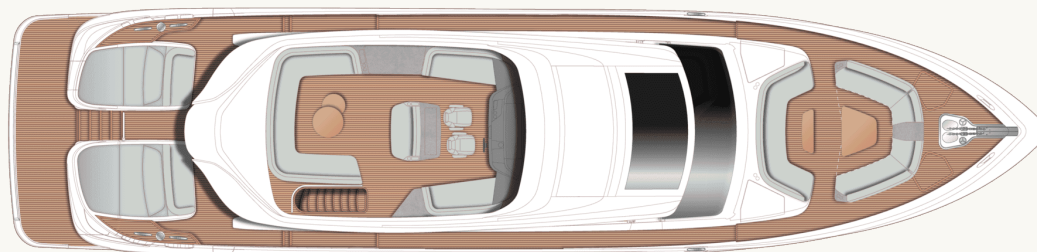


S80

Layouts and Specification

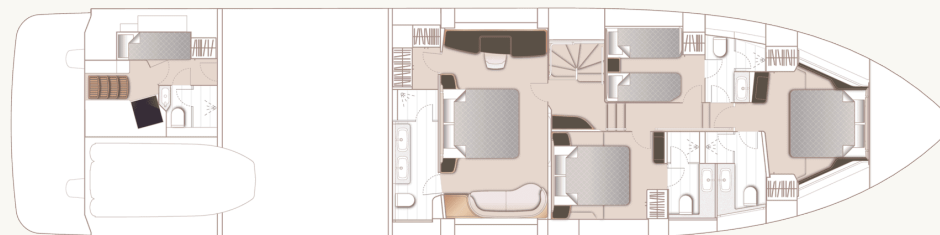




S80 Sportbridge



S80 Main Deck



S80 Lower Deck

Principal Dimensions

Length overall (incl. pulpit)	83 ft 6 in / 25.44m
Length overall (excl. pulpit)	82 ft 4 in / 25.10m
Beam	19 ft 11 in / 6.07m
Draft	6 ft 0 in / 1.82m
Displacement approx.	63,949 kg / 140,983 lbs*
Fuel capacity	1,430 gal / 1,717 US gal / 7,000 l
Water capacity (excl. calorifier)	326 gal / 391 US gal / 1,480 l
Black water tank	119 gal / 143 US gal / 500 l

Engines - Diesel

Twin MAN V12-2000 (2 x 2,000mhp)	Maximum speed range – 31-33 knots [†]
----------------------------------	--

Full Specification

Deck fittings

- Teak-laid transom platform, transom steps, cockpit deck, stairway to sportbridge, side decks, foredeck & sportbridge areas
- Reversible hydraulic anchor winches with foredeck, main helm and sportbridge controls
- Stemhead roller with automatic anchor launch and retrieve
- Twin anchor system incorporating:
- Primary anchor - 80kg galvanised Lewmar Claw anchor, with stainless steel Lewmar swivel and 100m of 14mm galvanised anchor chain
- Secondary anchor - 50kg galvanised Lewmar Claw anchor, with stainless steel Lewmar swivel and 70m of 14mm galvanised anchor chain
- Deck chain stoppers
- Twin electric stern line mooring winches
- Deck hatch access to chain locker, rope locker

- Deck hatch access to chain locker, rope locker
- Freshwater deck/anchor wash (with both fore and aft deck outlets)
- Stainless steel foredeck fairleads (1 pair)
- Stainless steel stern fairleads (2 pairs)
- Stainless steel bow cleats (1 pair, port and starboard)
- Stainless steel spring cleats (2 pairs, port and starboard)
- Stainless steel stern cleats (2 pairs, port and starboard)
- Stainless steel transom cleats (1 pair)
- Stainless steel handrails to foredeck and main deck side decks
- PVC rubbing band with stainless-steel insert
- LED deck level lighting
- Full set of IMCO navigation lights
- Twin beam searchlight with remote controls
- Stern docking lights
- Twin electric horns
- Fuel and water fillers

Fuel and water fillers

- Loudhailer
- Ensign socket and staff
- Holding tank dockside discharge connection
- Stainless-steel guard rails to foredecks
- Foredeck escape hatch
- Twin coach roof lockers for storage of fenders and ropes
- Foredeck forward-facing U-shaped seating area with optional coffee table
- Foredeck aft-facing U-shaped seating area with central storage locker with (grey porcelain top) and standard coffee table
- Williams tender launch system includes electric winch, rollers and non-slip pads and Williams Sportsjet 435 tender strapping
- Williams Sportsjet 435 tender strapping for use in tender garage

Cockpit and bathing platform

- Self-draining teak laid deck

- Princess logo in bathing platform teak
- Electro-hydraulic teak laid raise/lower bathing platform (550kg SWL)
- Retractable bathing ladder (manual) in side of bathing platform
- Hot & cold transom shower
- Garage fitout to include electro-hydraulic door and electric winch for tender up to 4.35m
- Space below garage for optional Glendinning equipment
- Single transom gate leading to bathing platform
- Watertight top hinged door giving access from bathing platform into crew area/engine room
- Remote control telescopic passerelle with automatic folding handrails (1.2m overhang)
- Twin aft sun pads with cupholders and backrests/headrests
- Twin forward facing seats
- Twin upholstered aft facing bench seats which can be manually re-positioned if required

- Life raft stowage in port aft sun pad
- Engine room to cockpit escape hatch
- Integral stairway to sportbridge with teak step treads
- Teak extendable dining table (extends from 6 to 8) with 8 chairs
- Starboard side servery with sink and bin
- Starboard locker containing remote fuel shut-off, manual bilge pump with valve chest and manual controls for automatic fire extinguishers
- LED overhead and deck level lighting
- Stainless-steel oval handrails
- Canvas tonneau cover (Note: shortened to length of stowed cushion position to allow garage and crew access)
- Illuminated crown logo on transom
- 220v/240v shore support inlets (2)

Sportbridge

- Dual station instrument and controls console (see lower helm position)
- Helm position
- Twin upholstered seats with manual fore/aft

- Twin upholstered seats with manual fore/aft adjustment for helmsman on moulded seat base
- Drinks holders (2)
- USB charging points (2) (1x USB-A and 1x USB-C)
- Port and starboard companion seating
- Stainless steel capped fly screen
- Teak-laid deck
- Aft U-shaped seating area with coffee table
- Clear view hatch to aft cockpit
- Access stairway to aft cockpit
- Aft-facing moveable upholstered dining-height seat (can be locked in place when positioned behind helm seats), with top-hinge storage unit and countertop aft of helm/navigator seat
- Portside servery with sink/tap, barbecue, drawer fridge and bin. Worktop is grey porcelain.
- LED deck level lighting
- Radar mast
- Twin matching whip aerials for VHF R/T radio
- Covers to exterior furniture

Covers to exterior furniture

- Optional dining table
- Optional GRP hardtop with dimmable LED lighting

Helm position

- Lower helm with fixed height captain's leather upholstered seat with manual fore and aft adjustment.
- Fixed navigator seat
- Helm seats Incorporates manual fold down foot rest (Optional fixed third helm seat)
- U-shaped companion seating to port with dining-height table
- Instrument console with display incorporating engine instruments, optional CCTV, fuel gauges, alarms and rudder position indicator
- Dual station instrument and controls console at lower helm position/sportbridge
 - power-assisted electro-hydraulic steering (Seastar)
 - adjustable Pininfarina steering wheel
 - high-speed magnetic compass
 - electronic engine controls

- electronic engine controls
- bow thruster control
- hydraulic anchor winch remote control
- colour radar (with scanner) and GPS/chart plotter(s) (twin 15.6" displays)
- 1 x 15" Böning display
- audible and visual alarm engine warning system
- autopilot
- speed and distance log
- echo sounder with alarm
- VHF with DSC R/T with intercom
- remote control dual searchlight
- horn button (to operate twin electric horns)
- audible and visual alarm for bilge pumps (via Böning)
- engine room fire extinguisher warning system
- Automatic fog horn with loudhailer
- Chart storage
- Drink holders (2)
- Toughened glass screen (clear for night vision) with windscreen de-mist system
- Windscreen wipers with freshwater windscreen wash

windscreen wash

- Black mesh sunscreens
- Bilge pump controls with visual pump running warnings
- 24v and 240v electrical control panel
- Riding light, helm and navigation light control switches
- Dimmable LED overhead/concealed lighting (24V) with night lighting & scene selection
- V-groove planked timber-laid flooring (including steps to saloon)
- 220/240v outlets (1)
- USB charging points (2) (1x USB-A and 1x USB-C)
- Watertight pantograph door giving direct access from starboard side deck
- Electric drop window to port

Saloon

- Large sofa to starboard with storage below
- Sofa to port with crockery storage draw
- Coffee table
- No skylight/skylight blinds to saloon area as standard

Standard

- Panoramic tinted toughened glass windows port and starboard
- Manual sheer roller blinds to all outboard windows (not including helm area)
- 55" LED TV on rise and fall
- Naim Uniti Atom audio system with speakers (2) and subwoofer
- Dimmable LED overhead/concealed lighting (24V) with scene selection
- 220/240v outlets (2)
- USB charging points (4) (2x USB-A and 2x USB-C)
- Onboard ethernet router & 4G internet modem
- Access stairway to lower accommodation
- Fitted carpet

Galley

- Granite/quartz worktop
- Galley units in HPL
- Miele 4-zone induction hob
- Hob extractor fan
- Miele combination convection oven with

grill/microwave

- Sub-zero single full height refrigeration units with deep freeze drawers
- Miele slimline dishwasher
- 1.5 bowl stainless-steel sink with mixer tap
- Chopping board & storage
- Twin waste bin
- High and low-level storage cupboards and drawers
- Cutlery storage
- 220/240v power outlets (4)
- LED overhead & task lighting (24V)
- Manual sheer roller blinds to windows
- V-groove planked timber-laid flooring
- Starboard side sideboard containing storage units, glass storage, icemaker and refrigeration
- 3-panel stainless-steel framed cockpit doors, opening to starboard side, with port side window opening
- Manual skysol blind aft patio doors and adjacent windows

Accommodation

- All cabins and bathrooms feature opening portholes and air conditioning
- All cabins feature 220/240v power points
- All en-suites feature 240v shaver points

Owner's stateroom

- Large double bed with bedside tables and drawers below
- Dressing area with full length mirror, hanging, shelf and drawer storage
- Built-in safe
- Port side dressing table with integrated mirror, chair, storage drawers and cupboards
- Starboard side sofa with storage drawers to forward bulkhead
- 55" LED TV
- Naim Uniti Atom audio system with speakers (2) and subwoofer
- Panoramic windows including opening portholes
- Manual Venetian blinds to hull windows
- Dimmable LED overhead/concealed lighting (24V) with scene selection

220/240v outlets (2)

- 220/240v outlets (2)
- USB charging points (4) (2x USB-A and 2x USB-C)
- Fitted carpet

En-suite bathroom

- Electric freshwater toilet
- Twin wash basins and vanity top in thermoformed Solid Surface
- Bathroom cabinets in interior boat timber choice (please specify), with chrome bathroom hardware
- Mirror
- Storage lockers
- Shower compartment with automatic pump out
- Extractor fan
- Heated towel rail
- Window with opening porthole
- Manual tension Venetian blind
- LED overhead and concealed lighting (24V)
- Bathroom accessories
- Solid Surface flooring, with synthetic teak

Solid surface flooring, with synthetic teak accents (weathered) applied to feature shower bulkheads and shower floor

Forward stateroom

- Large double bed with bedside tables and drawers below
- Built-in safe
- Twin double wardrobes
- Port side dressing table with integrated mirror, stool and storage drawers
- 43" LED TV
- Naim Uniti Atom audio system with speakers (2)
- Panoramic windows including opening portholes
- Manual Venetian blinds to hull windows
- Dimmable LED overhead/concealed lighting (24V) with scene selection
- 220/240v outlets (2)
- USB charging points (4) (2x USB-A and 2x USB-C)
- Fitted carpet

En-suite bathroom

- Electric freshwater toilet
- Wash basin and vanity top in thermoformed Solid Surface
- Bathroom cabinets in interior boat timber choice (please specify), with chrome bathroom hardware
- Mirror
- Storage lockers
- Shower compartment with automatic pump out
- Extractor fan
- Window with opening porthole
- Manual tension Venetian blind
- LED overhead and concealed lighting (24V)
- Bathroom accessories
- Solid Surface flooring, with synthetic teak accents (weathered) applied to feature shower bulkheads and shower floor

Port guest cabin

- Two single beds with drawers below
- Bedside table

- Wardrobe with shelves
- Mirror
- Storage lockers
- Window with opening portholes
- Manual Venetian blinds to hull window
- Dimmable LED overhead/concealed lighting (24V) with scene selection
- Individual berth lights
- 220/240v outlets (1)
- USB charging points (2) (1x USB-A and 1x USB-C)
- Fitted carpet

En-suite bathroom

- Electric freshwater toilet
- Wash basin and vanity top in thermoformed Solid Surface
- Bathroom cabinets in interior boat timber choice (please specify), with chrome bathroom hardware
- Mirror
- Storage lockers
- Shower compartment with automatic pump out

Port cabin

- Extractor fan
- Windows with opening porthole
- Manual tension Venetian blind
- LED overhead and concealed lighting (24V)
- Bathroom accessories
- Solid Surface flooring, with synthetic teak accents (weathered) applied to feature shower bulkheads and shower floor

Starboard guest cabin

- Double bed with drawers below
- Bedside table
- Dressing table with stool
- Wardrobe with shelves
- Mirror
- Storage lockers
- Window with opening portholes
- Manual Venetian blinds to hull windows
- Dimmable LED overhead/concealed lighting (24V) with scene selection
- Individual berth lights
- 220/240v outlets (1)
- USB charging points (2) (1x USB-A and 1x

Starboard cabin

- USB-C)
- Fitted carpet

En-suite bathroom

- Electric freshwater toilet
- Wash basin and vanity top in thermoformed Solid Surface
- Bathroom cabinets in interior boat timber choice (please specify), with chrome bathroom hardware
- Mirror
- Storage lockers
- Shower compartment with automatic pump out
- Extractor fan
- Windows with opening porthole
- Manual tension Venetian blind
- LED overhead and concealed lighting (24V)
- Bathroom accessories
- Solid Surface flooring, with synthetic teak accents (weathered) applied to feature shower bulkheads and shower floor

Lobby / passageway area

- Linen cupboard below companionway stairs
- Top-loading storage unit outboard in window side liner
- Sideboard with mirror above
- Combination washer/dryer located below companionway stairs
- Dimmable LED overhead/concealed lighting (24V)
- Fitted carpet
- Manual roller blind to window

Crew cabin

- Access to engine room
- Twin bunk beds with storage below
- Wardrobe
- Mirror
- Storage locker
- Opening porthole
- Mono-command Venetian blind
- LED overhead lighting (24V)
- Individual berth light (2)
- 220/240v outlets (1)

- USB charging points (2) (1x USB-A and 1x USB-C)
- Non-slip safety flooring

Crew bathroom

- Electric freshwater toilet
- Washbasin with Koko White (gloss finish) Solid Surface vanity top
- Mirror
- Storage lockers
- Shower compartment with automatic pump out
- Extractor fan
- LED overhead lighting (24V)
- Bathroom accessories
- Solid Surface flooring in Koko white (satin finish)

Crew area

- Access from transom door
- Hanging rails
- Storage locker
- LED overhead lighting (24V)

- LED overhead lighting (24V)
- Non-slip safety flooring
- Optional crew microwave and fridge (not available with SEABOB storage)
- Optional SEABOB storage (not available with microwave and fridge)
- Optional third berth
- Crew area is in gloss white laminate finish

Power and drive systems

- Forward and aft engine room bulkheads and engine room deck head integrally bonded including insulation with acoustafoam layers (Ref: Development Standard DS876)
- High volume air intakes
- Engine room extractor fan with electronic time delay
- Engine exhaust silencers and water-cooled exhausts
- Engines flexibly mounted
- Automatic fire extinguisher with remote override control
- Automatic and manual bilge pumps
- Propeller shafts in Marinemet

- 5-bladed propellers in nickel aluminium bronze
- High speed balanced rudders
- Cathodic protection for stern gear
- Stern gear, engines, fuel tank fillers, etc all electrically bonded
- LED Engine room lighting
- Engine room access from transom (via crew area) and cockpit deck hatch
- Power-assisted electro-hydraulic steering system
- Electronic engine and gear shift controls
- Bow thruster with dual-station controls (310KgF)
- Fresh water supply point in engine room
- Dripless self-aligning shaft seals

Electrical systems

24 Volt

- 4x heavy duty engine start battery
- 6x heavy duty auxiliary batteries
- 2x heavy duty generator start batteries
- Battery link facility with remote control at

Battery link facility with remote control at helm position

- Remote battery isolator control switches at main switch panel position
- Both battery banks are charged using a voltage sensitive relay that parallels both battery banks when a charging source is present
- 1 x 100A charger, 1x 100A-3500W charger/inverter & 1x 10A charger (for generator batteries)
- Circuit breakers on all circuits
- 24v to 12v converters for certain navigation and radio circuits
- 24v to 240v/50Hz inverter for saloon a/v and galley fridge
- Galvanic isolation system
- Princess Connect telemetry and maintenance system

220/240 Volt

- European specification: Standard 2x 27kW @ 50Hz with optional upgrade up to 2 x 28kW @ 50Hz diesel generators in own sound

- shields, water cooled and with specially silenced exhaust systems and with remote operation from main control panel
- USA specification: Standard 2x 29kW @ 60Hz with optional upgrade up to 2 x 32kW @ 60Hz diesel generators in own sound shields, water cooled and with specially silenced exhaust systems and with remote operation from main control panel
- 220/240v shore power inlets (2x 63amp single phase)
- Shore power/generator change over control operated from main control panel
- Polarity check system
- Earth leakage safety trip, circuit breakers on all circuits
- Power points (240v) in all cabins and living areas, helm position and galley
- 240v shaver points in washrooms
- 2kW immersion heaters for fresh water (2)

Fuel system

- Main fuel tank with a total of 7000 litres fuel

- capacity – (8800 litres if long range fuel tank is specified.)
- Fuel fillers to port and starboard
- High capacity duplex fuel filters/water traps with integral changeover valves and water sensors connected to alarms at helm position
- Remote fuel isolation controls in cockpit locker for main engines and generators
- Fuel gauges at helm position

Air conditioning system

- Air conditioning/heating reverse cycle (chilled water)
- 162,000 BTU fan capacity with 144,000 BTU chiller capacity suitable for temperatures to 40°C (tropical) incorporating a windscreen demist facility
- Outlets in all areas

Water system

- Fresh water tanks giving 1400 litres capacity plus 200 litres hot water calorifier

- Automatic water pump with filter (80l/min)
- Water level gauge
- Deck filler
- Pump control at helm positions
- Electric freshwater toilet system linked to 540 litres holding tank, content gauge and low noise electric overboard discharge, with macerator backup system as well as dockside discharge system

Extinguishers/fire control systems

- Automatic engine room fire extinguisher system (with manual override) and warning system at helm position providing automatic shutdown of engines, generators and ventilation fans
- Hand operated fire extinguishers in all guest cabins, galley, crew quarters and sportbridge
- Smoke detector (and heat detector as required) on each deck (10-year battery life)
- Automatic under helm fire extinguisher at lower helm

Bilge pumps

- Automatic/manual override electric bilge pumps in engine room, lazarette area and forward accommodation
- High capacity manual bilge system with suction points in the same areas
- Electric bilge pumps have controls and warning lights with audible alarm at helm position

Other standard equipment

- Ensign staff
- Fenders (8)
- Mooring warps (4)
- First Aid Kit
- Set of towels (8 large, 8 hand)
- Bed cover supplied to all cabins (except crew cabin)
- Complete set of Lucrezia crystal glassware (8 settings consisting of tumbler, highball and wine glasses)
- Set of Sous Le Soleil crockery (8 settings)

- consisting of plate, cake plate, dessert plate, bowl, cup & saucer)
- Set of stainless-steel cutlery (8 settings of David Mellor “Paris” cutlery – 7 pieces)
- Tool kit
- Boat hook
- Owner’s manual and engine manual
- Ship’s document case

Finishes

- Teak-laid decks to all external deck areas (including sportbridge)
- V-groove planked timber-laid floor to galley and lower helm position
- Furniture in Rovere oak with satin finish as standard. Optional finishes include ash or silver oak with a satin finish or walnut wood in a satin or gloss finish
- Solid Surface floors in all bathroom suites in guest accommodation and optional day head
- Thermoformed Solid Surface wash basin vanity tops in all bathroom suites in guest accommodation and optional day head

- Bathroom cabinets in interior boat timber choice (please specify), with chrome bathroom hardware as standard in all guest bathrooms and optional day head (excluding crew bathroom)
- Synthetic teak accents (weathered) applied to feature shower bulkheads and shower floor in guest ensembles
- Galley counter top in granite or quartz
- Choice of high-quality carpets and fabrics from an extensive range
- Exterior upholstery to be selected from the Comfort Exterior fabric range (no contrast)
- Blinds to all windows and portholes (excludes helm and pantograph doors)
- All lower crew furniture is in gloss white laminate, with Solid Surface bathroom floor and vanity top
- Crew cabins have non-slip safety flooring
- Non-slip safety flooring to crew mess and passageway