



Y72



Finished to high standards throughout, the all-new Y72s design features are comparable to those of larger Y Class yachts. Her spacious saloon has a sociable layout with a bar area and open plan galley, complemented by a multi-zone Naim audio system.





Forward on the lower deck, six guests can enjoy three beautifully appointed guest cabins filled with light from the full-length hull glazing. A dedicated staircase leads from the main deck to the full-beam owner's stateroom amidships, via a private lobby area connected to the saloon. The sophisticated owner's stateroom is furnished with a sofa, dressing area and vanity desk wrapped and stitched in Livorno Stone leather for a contemporary finish. Luxurious surroundings exude from the owner's stateroom with architecturally inspired feature panels, fresh linen wallcoverings and a bronze tint mirror to compliment the scheme. An additional en-suite cabin with two single beds is positioned aft for crew or occasional guests.







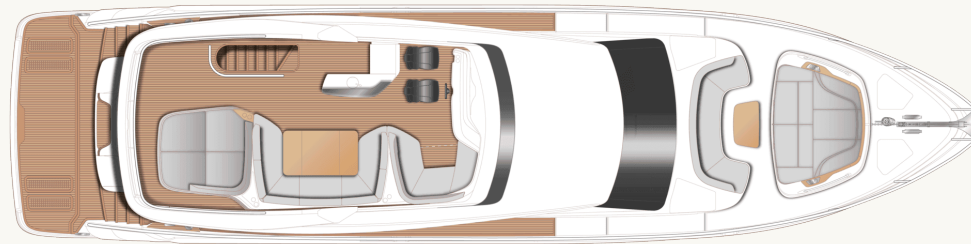
Take a virtual tour of the Y72



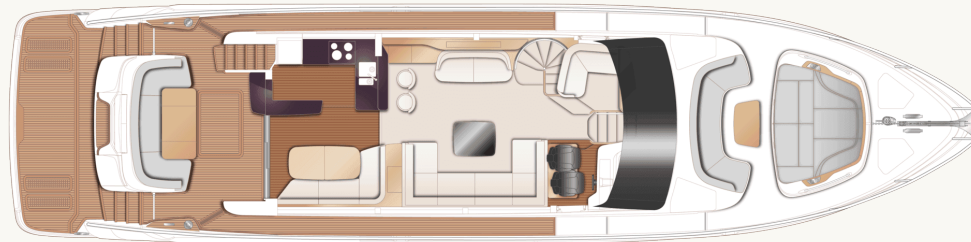
Y72

Layout and Specification

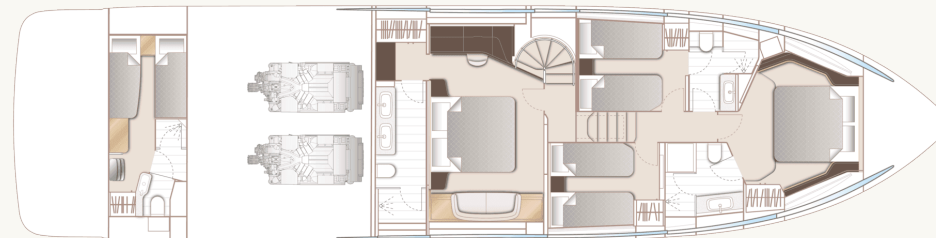




Y72 Flybridge



Y72 Main Deck



Y72 Lower Deck

Principal Dimensions

| | |
|-----------------------------------|----------------------------------|
| Length overall (incl. pulpit) | 74 ft 9 in / 22.80m |
| Length overall (excl. pulpit) | 73 ft 2 in / 22.31m |
| Beam | 17 ft 11 in / 5.45m |
| Draft | 5 ft 8 in / 1.72m |
| Displacement approx. | 51,325 kg / 113,152 lbs* |
| Fuel capacity | 990 gal / 1,189 US gal / 4,500 l |
| Water capacity (excl. calorifier) | 184 gal / 221 US gal / 836 l |
| Black water tank | 88 gal / 106 US gal / 400 l |

Engines - Diesel

| | |
|----------------------------------|------------------------------------|
| Twin MAN V12-1650 (2 x 1,650mhp) | Maximum speed range – 33-35 knots† |
|----------------------------------|------------------------------------|

Full Specification

Deck fittings

- Teak-laid transom platform, cockpit deck, flybridge, flybridge stairway and steps to side deck
- Reversible electric anchor winch with foredeck, main helm and flybridge controls
- Stemhead roller with automatic anchor launch and retrieve
- Self-stowing 50kg/110lbs Delta anchor with 60m of 12mm chain
- Twin electric sternline mooring winches
- Deck hatch access to chain locker
- Bow rope stowage locker
- Freshwater deck/anchor wash
- Stainless steel bow and stern fairleads
- Stainless steel bow, stern and spring cleats (2 pairs)
- Stainless steel pulpit and guard rails
- Stainless steel coachroof and flybridge handrails
- Foredeck escape hatch
- Foredeck U-shaped seating area
- Foredeck sunbathing area, integrated adjustable

headrests with aft facing seat conversion

- Twin coachroof lockers for storage of fenders, ropes and covers
- PVC rubbing band with stainless steel insert
- LED deck level lighting integrated into scene selection lighting control
- Illuminated crown logo on transom
- Full set of IMCO navigation lights
- Riding light
- Stern docking light (mounted on flybridge overhang)
- Twin beam searchlight with dual station remote controls
- Twin electric horns
- Loudhailer
- Fuel and water fillers

Cockpit and bathing platform

- Self-draining
- Upholstered U-shaped seating
- Folding teak dining table
- LED overhead and deck level lighting integrated

into scene selection lighting control

- Stainless steel handrails
- Pantograph door to aft crew cabin
- Lockable gas strut assisted hatch to engine room/lazarette
- Lifteraft stowage locker
- Rope storage lockers
- Locker containing remote fuel cocks, manual bilge pump with valve chest and manual controls for automatic fire extinguishers
- Integral stairway to flybridge with teak step treads
- Twin transom gates leading to bathing platform
- Electro-hydraulic raise/lower teak laid bathing platform (450kg SWL)
- Retractable bathing ladder (manual) in side of hydraulic platform
- Swim platform transom seat in teak
- Transom steps to access stern from bathing platform when in lowered position
- Dinghy chock system (keyway plates and sliders fitted to bathing platform)
- Transom storage locker capable of storing 1 x

SEABOB F5 / F5 S with space to port side to facilitate SEABOB charging (can accommodate 1 x SEABOB F5SR with single power supply)

- Hot and cold transom shower
- 220/240v shore support inlet
- Cockpit canvas cover

Flybridge

- Instrument console with dual station controls and LED display incorporating engine instruments, fuel gages, alarms and rudder position
- Power assisted electro hydraulic steering with adjustable wheel
- Twin helm seats with fore and aft adjustment for helmsman
- Starboard L-shaped seating (converts to sunpad)
- Large U-shaped upholstered seating
- Teak table with removable central section
- Wet-bar with barbecue, sink, drawer fridge, waste bin and storage
- Sunbed aft with storage below
- Naim Uniti Atom audio unit with JL Audio M6-650X-L waterproof speakers (2)

- Clear view hatch to aft cockpit
- Wind deflector screens
- Stainless steel handrails with glass balustrade and teak capping to aft end of flybridge
- LED deck level lighting integrated into scene selection lighting control
- GRP radar arch
- Twin matching whip aerials for VHF R/T and radio
- Console, table and seat covers
- Optional extended GRP hardtop with/without electric tilting louvered section or with fixed glass panel
- USB charging points (2 x USB-A)

Helm position

- Twin leather helm seats with fore and aft adjustment for helmsman
- Instrument console with LED display incorporating engine instruments, fuel gauges, alarms and rudder position indicator
- Dual station instruments and controls at Flybridge and Lower Helm Positions:
 - power-assisted electro-hydraulic steering
 - adjustable steering wheel

- high-speed magnetic compass
- electronic engine controls
- Bow thruster control
- electric anchor winch remote control
- colour radar (with scanner) and GPS/chartplotter
- autopilot
- speed and distance log
- echo sounder with alarm
- VHF with DSC R/T with intercom
- remote control searchlight
- horn button
- controls for standard trim tabs
- Böning system integrated with the following functionalities (displayed on separate dedicated display at helm):
 - Engine instrumentation (including fuel levels and fuel flow)
 - Digital boat alarms
 - Scene selection lighting controls
 - AC/DC control and monitoring
- Drinks holders
- Toughened glass screen (clear for night vision) with windscreen demist system
- Windscreen wipers with freshwater windscreen wash

- Black mesh windscreen covers
- Bilge pump controls with visual pump running warnings
- 24v and 240v electrical control panel
- Riding light, helm and navigation light control switches
- USB charging point
- LED overhead lighting (24v) and night lighting integrated into scene selection lighting control
- Pantograph helmsman's door to starboard side deck
- Timber flooring (V groove planked)

Saloon

- U-shaped sofa to starboard
- Coffee table
- Sofa to port
- L-shaped sofa opposite helm area
- Sideboard unit with bottle and glass storage
- Refrigerator
- 55" UHD LED TV on rise and fall
- Naim audio system paired with speakers (2) and subwoofer
- Electric drop window to port
- Manual tension venetian blinds to all windows

- Dimmable LED overhead and concealed lighting (24v) integrated into scene selection lighting control
- Access stairway to lower accommodation
- Separate access stairway to owner's stateroom
- Fitted carpet

Dining area

- L-shaped sofa
- Folding dining table
- Occasional dining table stools (2)
- Stainless steel framed sliding bi-fold door to cockpit with integrated hinging window aft of galley
- Venetian blinds to windows and pleated blinds to doors
- Dimmable LED overhead and concealed lighting (24v) integrated into scene selection lighting control
- Timber flooring (V groove planked)

Galley

- Galley worktop in choice of quartz
- Bar top to saloon area

- 4-zone ceramic induction hob
- Extractor fan
- Combination microwave/convection oven with grill
- Twin-bowl stainless steel sink with mixer tap
- Chopping board
- Full height refrigerator/deep freeze
- Dishwasher
- Icemaker
- Waste bin
- Drawers and storage cupboards
- Manual tension venetian blinds to window
- LED overhead and task lighting (24v) integrated into scene selection lighting control
- 220/240v outlets (4)
- Timber flooring (V groove planked)

Accommodation

- All cabins and bathrooms feature opening portholes and air conditioning
- All cabins feature 220/240v power points
- All bathrooms feature electric freshwater toilets and 240v shaver points

Owner's stateroom lobby

- Access stairway to owner's stateroom
- Panoramic window
- Manual tension venetian blind
- Washer/dryer with cupboard above fitted in the forward passageway in the guest accommodation (a separate washer and dryer may be optionally installed in place of the standard unit)
- LED overhead and concealed lighting (24v) integrated into scene selection lighting control
- Fitted carpet

Owner's stateroom

- Large double bed with drawers below
- Twin bedside tables
- Dressing area with wardrobes and storage
- Built-in safe
- Dressing table with stool
- Mirror
- Sofa
- Storage lockers and drawers
- 50" UHD LED TV
- Naim audio system paired with speakers (2) and subwoofer
- Panoramic windows including opening portholes

- Manual tension venetian blinds to
- Dimmable LED overhead and concealed lighting (24v) integrated into scene selection lighting control
- Individual berth lights
- 220/240v outlets (2)
- USB charging point
- Fitted carpet

En-suite bathroom

- Twin washbasins and worktop in thermoformed solid surface
- Mirror
- Storage lockers
- Shower compartment with automatic pump out
- Extractor fan
- Window with opening porthole
- Manual tension venetian blind
- LED overhead and concealed lighting (24v) integrated into scene selection lighting control
- Bathroom accessories
- Solid surface flooring

Forward stateroom

- Large double bed with drawers below
- Wardrobe with shelves
- Dressing table
- Mirror
- Storage lockers and drawers
- Window with opening portholes
- Manual tension venetian blind
- Deck hatch
- LED overhead and concealed lighting (24v) integrated into scene selection lighting control
- Individual berth lights
- 220/240v outlets (4)
- USB charging point
- Fitted carpet

En-suite bathroom

- Washbasin and worktop in thermoformed solid surface
- Mirror
- Storage lockers
- Shower compartment with automatic pump out
- Extractor fan
- Window with opening portholes
- Manual tension venetian blind
- LED overhead and concealed lighting (24v)

- integrated into scene selection lighting control
- Bathroom accessories
- Solid surface flooring

Port and starboard guest cabins

- Two single beds with drawers below (with option of double bed conversion)
- Bedside table
- Wardrobe with shelves
- Mirror
- Storage lockers and drawers
- Window with opening portholes
- Manual tension venetian blinds
- LED overhead and concealed lighting (24v) integrated into scene selection lighting control
- Individual berth lights
- 220/240v outlets (2)
- USB charging point
- Fitted carpet

En-suite bathroom

- Washbasin and worktop in thermoformed solid surface
- Mirror

- Storage lockers
- Shower compartment with automatic pump out
- Extractor fan
- Window with opening porthole
- Manual tension venetian blind
- LED overhead and concealed lighting (24v) integrated into scene selection lighting control
- Bathroom accessories
- Solid surface flooring
- Day access door from passageway

Crew cabin

- Two single beds with storage below
- Bedside table
- Wardrobe with shelf
- Mirror
- Storage lockers and drawers
- Transom window with venetian blind
- Opening portlight
- LED overhead lighting (24v)
- Individual berth lights
- 220/240v outlets (2)
- USB charging point
- Standard aft lazarette incorporates overhead lighting, transom window, access hatch with

- ladder and storage space
- Access to engine room via door

En-suite bathroom

- Washbasin with solid surface worktop
- Mirror
- Storage lockers
- Shower compartment with automatic pump out
- Extractor fan
- LED overhead lighting (24v)
- Bathroom accessories
- Non-slip flooring

Power and drive systems

- Engine room soundproofed
- High volume air intakes
- Engine room extractor fan with electronic time delay
- Engine exhaust silencers and water-cooled exhausts
- Engine beds integrally moulded with hull for strength and vibration absorption
- Forward and aft engine room bulkheads integrally bonded

- Engines flexibly mounted
- Automatic fire extinguisher with remote override control
- Automatic and manual bilge pumps
- Propeller shafts in Marinemet
- 5-bladed propellers in nickel aluminium bronze
- High speed balanced rudders
- Cathodic protection for sterngear
- Sterngear, engines, fuel tanks etc all electrically bonded
- Bow thruster (250kgf/551lbf) with dual-station controls
- Engine room lighting
- Engine room access hatch and ladder
- Engine room door to crew area (via crew head)
- Power-assisted electro-hydraulic steering system
- Electronic engine and gear shift controls
- Fresh water supply point in engine room
- Dripless self-aligning shaft seals

Electrical systems

24 Volt:

- 4 x heavy-duty batteries for engine starting
- 6 x heavy-duty auxiliary batteries

- Battery link facility with remote control at helm position
- Both battery banks are charged using a voltage sensitive relay that parallels both battery banks when a charging source is present
- 1 x 80-amp 24v battery charger and 1x combination 3.0 kW 70-amp inverter charger
- Remote battery master switches with control switch at main switch panel
- Circuit breakers on all circuits
- 12v voltage dropper for certain navigation and radio circuits
- Princess Connect telemetry and maintenance system
- Princess Connect telemetry and maintenance system

220/240 Volt:

- 22.5kW generator in own sound shield with water-cooled and specially silenced exhaust
- Automatic fire extinguisher
- 63-amp shore support inlet
- Generator/shore support change-over switch
- Polarity check system
- Earth leakage safety trip

- Circuit breakers on all circuits
- Power points (240v) in: owner's stateroom, guest cabins, galley and saloon area
- Shaver points in all bathrooms
- Smoke detectors (galley, stateroom, lower lobby and crew area)
- Böning system

Air conditioning

- Air conditioning/heating reverse cycle 128,000 BTU chiller with 128,000 BTU fan capacity suitable for ambient temperature to 40°C (e.g. Tropical)
- Controls in all cabins and outlets in all areas (includes outlets in bathrooms and crew cabin)
- Standard 22.5kW generator is suitable (this has sufficient capacity for Gyro stabilisers as well as air conditioning)

Fuel system

- Fuel tanks (in NS8 marine grade alloy) with interconnection system giving 990 gal / 1,189 US gal / 4,500l capacity
- Fuel fillers on port and starboard side decks

- High-capacity duplex fuel filters with water traps and change-over valves, water warning sensors connected to warning lights at lower helm
- Remote fuel cocks in cockpit locker
- Fuel gauges at main helm console

Water system

- Water tanks totalling 184 gal / 221 US gal / 836l plus 16 gal /19 US gal / 73l hot water calorifier
- Water heated by engines and 240v immersion heater
- Automatic water pump with filter
- Main circuit breaker at switch panel
- Water level gauge
- Deck filler
- Electric freshwater toilet system with 88 gal / 106 US gal / 400l holding tank, content gauge and low noise electric overboard discharge, with macerator backup system as well as dockside discharge system

Fire extinguishers

- Automatic/manual override fire extinguishers in engine room

- Hand operated fire extinguishers (7) in owner's stateroom, forward stateroom, port and starboard guest cabins, galley, lower helm position and aft cabin

Bilge pumps

- Automatic/manual override electric bilge pumps in engine room (2), rudder area and forward accommodation (6 in all)
- High-capacity manual bilge pump with valve system and suction points in same areas
- Electric bilge pumps have controls and warning lights at main helm and warning light with audible alarm at flybridge helm

Other standard equipment

- Ensign staff
- Fenders (8)
- Mooring warps (4)
- Boat hook
- First-aid kit
- Tool kit
- Owner's manual and engine manual
- Bed cover supplied to all cabins (except optional

crew cabin)

- Set of towels (8 large, 8 hand)
- Set of crystal glassware (8 settings consisting of tumbler and wine glasses)
- Set of Princess china (8 settings)
- Set of cutlery (8 settings of David Mellor "Paris" cutlery 7 pieces)
- Ship's document case
- Anchor winch back up handle

Finishes

- Teak-laid decks to transom platform, steps to flybridge and flybridge
- Timber floor (V groove planked) to galley, dining area and helm
- Furniture in Rovere oak with satin finish as standard. Optional finishes include ash or silver oak with a satin finish or walnut wood in a satin or gloss finish
- Solid surface floors in all bathroom suites
- Thermoformed solid surface wash basin counter tops in all bathroom suites
- Galley worktop in quartz
- Choice of high-quality carpet and upholstery fabric from extensive range

- Blinds or sunscreens to all windows, doors and portholes
- Crew cabin has boat timber furnishings and timber flooring, crew bathroom floor is solid surface with solid surface countertops