

Y 85



The Y85 is a triumph of contemporary design. Her elegant sweeping profile houses an interior sanctuary that resets the benchmark for modern living. Her flybridge offers an irresistible invitation to entertain with a large dining area opposite a well-equipped wetbar further complemented by a large aft sunpad. An expansive single-level main deck provides ample entertaining space with a flexible galley arrangement. Three separate seating areas ensure the utmost privacy for guests with the crew able to move discretely around the yacht. With twin MAN V12 engines propelling her to a top speed of 32 knots, she flies past her contemporaries without looking back. Unmissable, the all-new Y85 is unmistakably Princess.





Below deck, up to eight guests are accommodated across four beautifully appointed en-suite cabins. Amidships, the full beam master suite is a champion of spacial design, whilst the en suite VIP cabin, forward, boasts a large double bed and walk-in-wardrobe. Furthermore, one double and one twin cabin (convertible into a double) complete her spacious accommodation.





TAKE A VIRTUAL TOUR OF THE Y85

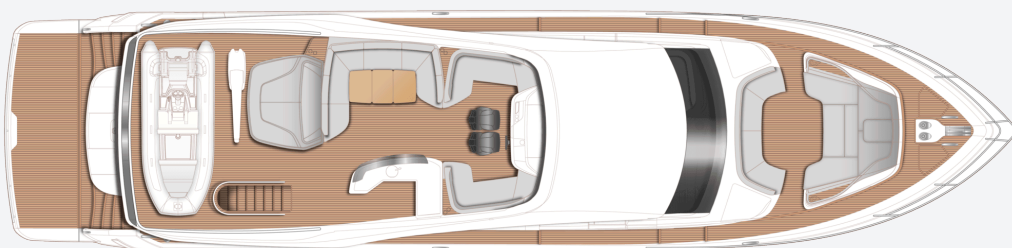


EXPERIENCE THE Y85

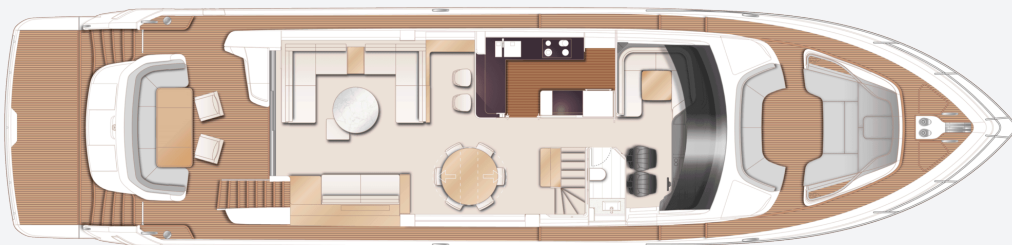




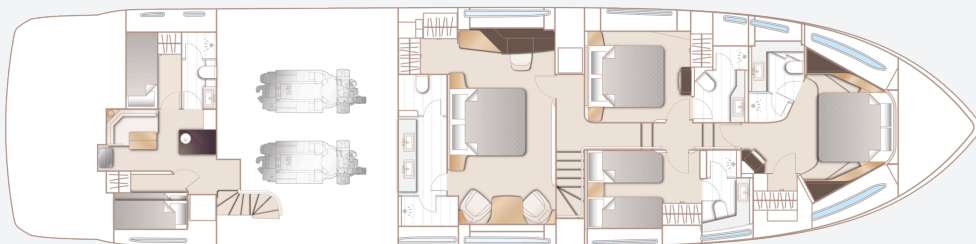
Y85
SPECIFICATION



Y85 Flybridge



Y85 Main Deck



Y85 Lower Deck

PRINCIPAL DIMENSIONS

Length overall (incl. pulpit)	86ft 0in (26.2m)
Length overall (excl. pulpit)	84ft 6in (25.75m)
Beam	20ft 8in (6.03m)
Draft (full load)	5ft 10in (1.77m)
Displacement (half load)	78,000kg (171,961lbs)*
Fuel capacity	2,420 gal/2,905 US gal/11,000l
Water capacity (excl. calorifier)	285 gal/342 US gal/1,295l

ENGINES

Twin MAN V12 (2 x 1,900mhp)	Speed range: 30-32 knots†
--	------------------------------

FULL SPECIFICATION

DECK FITTINGS

- Teak-laid transom platform, cockpit deck, flybridge, flybridge stairway, side decks and foredeck walkthrough
- Reversible hydraulic anchor winches with foredeck, main helm and flybridge controls
- Stemhead roller with automatic anchor launch and retrieve
- Twin anchor system incorporating a primary - 80kg galvanised claw anchor with 100m of 14mm galvanised chain and a secondary - 50kg galvanised claw anchor with 70m of 14mm galvanised chain
- Twin electric sternline mooring winches
- Deck hatch access to chain locker
- Bow rope stowage locker
- Freshwater deck/anchor wash (with both fore and aft deck outlets)
- Stainless steel bow and stern fairleads
- Stainless-steel bow, stern and spring cleats (2 pairs)
- Stainless-steel pulpit and guard rails
- Stainless steel coachroof and flybridge

handrails

- Foredeck escape hatch
- Foredeck U-shaped seating area
- Foredeck sunbathing area with integrated adjustable teak headrests and storage
- Twin coachroof lockers for storage of fenders, ropes and cushions
- PVC rubbing band with stainless-steel insert
- LED deck level lighting
- Full set of IMCO navigation lights
- Riding light
- Twin beam searchlight with dual station remote controls
- Loudhailer
- Stern docking lights
- Twin electric horns
- Fuel and water fillers

COCKPIT AND BATHING PLATFORM

- Self-draining
- Upholstered U-shaped seating
- Folding teak dining table
- LED overhead and deck level lighting

- Stainless steel handrails
- Remote control 4.4m telescopic passarelle with folding handrails
- Watertight pantograph doors giving direct access from starboard side deck and transom to crew cabin /engine room
- Rope storage lockers
- Locker containing remote fuel cocks, manual bilge pump with valve chest and manual controls for automatic fire extinguishers
- Integral stairway to flybridge with teak step treads
- Twin transom gates leading to bathing platform
- Electro-hydraulic raise/lower teak laid bathing platform (550kg SWL)
- Retractable bathing ladder (manual) in side of hydraulic platform
- Transom access to lazarette
- Transom steps to access stern from bathing platform when in lowered position
- Dinghy chock system
- Hot and cold transom shower
- 220/240v shore support inlets

- Cockpit canvas cover

FLYBRIDGE

- Instrument consoles with dual station controls and LED display incorporating engine instruments, fuel gauges, alarms and rudder position indicator (see Lower Helm Position)
- Twin adjustable helm seats
- Port and starboard forward-facing L shaped seating
- Large U-shaped upholstered seating
- Wetbar with double barbecue, sink, drawer refrigerator, waste bin and storage
- Sunpad aft with storage below
- Naim Uniti Atom audio system with waterproof speakers (2)
- Clear view hatch to aft cockpit
- Wind deflector screens
- Stainless-steel handrails with glass balustrade and teak capping to aft end of flybridge
- Lifteraft stowage
- LED deck level lighting
- GRP radar arch
- Twin matching whip aerials for VHF R/T and radio
- Console and seat covers

- Optional crane (550kg SWL)
- Optional GRP hardtop with/without electric rotating louvered opening section or glass panels (or optional folding bimini with electro-hydraulic operation)

WHEELHOUSE

- Leather upholstered helm seats with electric fore and aft adjustment for helmsman
- Leather upholstered navigator's seat with manual fore and aft adjustment
- U-Shaped seating area to port with table
- Instrument console with LED display incorporating engine instruments, fuel gauges, alarms and rudder position indicator
- Dual station instruments and controls at Flybridge and Lower Helm Positions:
 - power-assisted electro-hydraulic steering
 - adjustable steering wheel
 - high-speed magnetic compass
 - electronic engine controls
 - trim tab controls with indicators
 - bow thruster control
 - hydraulic anchor winch remote control
 - colour radar (with scanner) and GPS/chartploter (twin displays at lower helm)

- autopilot
- speed and distance log
- echo sounder with alarm
- VHF with DSC R/T with intercom
- remote control searchlight
- horn button
- Intercom to flybridge
- Automatic fog horn with loudhailer
- Chart storage
- Drinks holders
- Toughened glass screen (clear for night vision) with windscreen de-mist system
- Windscreen wipers with freshwater windscreen wash
- Black mesh sunscreens
- Bilge pump controls with visual pump running warnings
- 24v and 240v electrical control panel
- Riding light, helm and navigation light control switches
- USB charging points (2)
- LED overhead lighting (24v) and night lighting
- Pantograph helmsman's door to starboard side deck
- Electric drop window to port
- Timber flooring (V groove planked)

SALOON

- Twin L-shaped sofas to port with storage below
- Coffee table
- Bruton pouf
- Sofa to starboard
- Storage units
- 55" UHD LED TV on rise and fall
- Naim Uniti Atom audio system with ceiling mounted speakers (4)
- Triple stainless steel framed sliding door to aft cockpit
- Electric roller sheer blinds to outboard windows
- Manual curtains on wave track to doors
- LED overhead and concealed lighting (24v)
- Fitted carpet

DINING AREA

- Expandable dining table
- Dining chairs (8)
- Furniture unit with bookcase, bottle and glass storage
- Refrigerator
- Full height panoramic window
- Electric roller sheer blinds to forward starboard window
- Manual curtains on wave track to panoramic

window

- LED overhead and concealed lighting (24v)
- Stairway to lower accommodation
- Day head
- Fitted carpet

GALLEY

- Galley unit worktops in choice of granite or quartz
- Open bar/servery layout with powered electric screen to fully enclose galley and sliding door
- 4-zone induction hob
- Extractor fan
- Combination microwave/ convection oven with grill
- Twin-bowl stainless-steel sink with mixer tap
- Chopping board
- Full height refrigerator/deep freezer
- Dishwasher
- Icemaker
- Waste bin
- Drawers and storage cupboards
- Electric roller blinds to window
- Pantograph door to port side deck
- LED overhead and task lighting (24v)
- 220/240v outlets (4)

- Timber flooring (V groove planked)

ACCOMMODATION

- All cabins and bathrooms feature opening portholes and air conditioning
- All cabins feature 220/240v power points
- All bathrooms feature electric freshwater toilets and 240v shaver points

OWNER'S STATEROOM

- Large double bed with drawers below
- Twin bedside tables
- Dressing area with wardrobes and storage
- Built-in safe
- Dressing table with chair (doubles as additional dining chair)
- Mirror
- Occasional table with seats fore and aft
- Storage lockers and drawers
- 55" UHD LED TV
- Naim Uniti Atom audio system with speakers (2) and subwoofer
- Electric roman blinds and manual sheer roller blinds to hull windows
- Panoramic windows including opening portholes

- LED overhead and concealed lighting (24v)
- Individual berth lights
- 220/240v outlets (2)
- USB charging points (2)
- Fitted carpet

EN-SUITE BATHROOM

- Twin washbasins with marble/granite/quartz worktop
- Mirror
- Storage lockers
- Separate compartment with toilet and option of bidet
- Shower compartment with automatic pump out
- Extractor fan
- Heated towel rail
- Window with opening porthole
- Manual tension venetian blind
- LED overhead and concealed lighting (24v)
- Bathroom accessories
- Marble/granite /quartz to floor and specified bulkheads

FORWARD STATEROOM

- Large double bed with drawers below
- Walk-in wardrobe with shelves

- Dressing table with stool
- Mirror
- Storage lockers
- 32" HD LED TV
- Bluray CD/DVD player connected to Naim Uniti Atom sound system paired with ceiling mounted speakers (2)
- Windows with opening portholes
- Electric roman blinds
- Deck hatch
- LED overhead and concealed lighting (24v)
- Individual berth lights
- 220/240v outlets (2)
- USB charging points (2)
- Fitted carpet

EN-SUITE BATHROOM

- Washbasin with marble/granite/quartz worktop
- Mirror
- Storage lockers
- Shower compartment with automatic pump out
- Extractor fan
- Window with opening porthole
- Manual tension venetian blind
- LED overhead and concealed lighting (24v)
- Bathroom accessories

- Marble/granite/quartz flooring and specified bulkhead

STARBOARD GUEST CABIN

- Two single beds with drawers below (with option of double bed conversion)
- Bedside table
- Wardrobe with shelves
- Mirror
- Storage lockers
- Window with opening portholes
- Electric roman blinds
- LED overhead and concealed lighting (24v)
- Individual berth lights
- 220/240v outlets (2)
- USB charging points (2)
- Fitted carpet

EN-SUITE BATHROOM

- Washbasin with marble/granite/quartz worktop
- Mirror
- Storage lockers
- Shower compartment with automatic pump out
- Extractor fan
- Window with opening portholes
- Manual tension venetian blind

- LED overhead and concealed lighting (24v)
- Bathroom accessories
- Marble/granite/quartz flooring

PORT GUEST CABIN

- Large double bed with drawers
- Twin bedside tables
- Dressing table with stool
- Wardrobe with shelves
- Mirror
- Storage lockers
- Window with opening portholes
- Electric roman blinds
- LED overhead and concealed lighting (24v)
- Individual berth lights
- 220/240v outlets (2)
- USB charging points (2)
- Fitted carpet

EN-SUITE BATHROOM

- Washbasin with marble/granite/quartz worktop
- Mirror
- Storage lockers
- Shower compartment with automatic pump out
- Extractor fan
- Window with opening portholes

- Manual tension venetian blind
- LED overhead and concealed lighting (24v)
- Bathroom accessories
- Marble/granite/quartz flooring

CREW QUARTERS

- All lower deck crew furniture is in white finish, with white solid surface bathroom vanity unit tops and bathroom floors

CAPTAIN'S CABIN

- single bed with storage below (option of additional berth above)
- Wardrobe with shelf
- Mirror
- Storage lockers
- Opening porthole and venetian blind
- LED overhead lighting (24v)
- Individual berth light
- 220/240v outlets (2)
- USB charging points (2)
- Fitted carpet

CREW CABIN

- Two single beds with storage below
- Wardrobe with shelf

- Mirror
- Storage lockers
- Opening porthole and venetian blind
- LED overhead lighting (24v)
- Individual berth light
- 220/240v outlets (2)
- USB charging points (2)
- Fitted carpet

CREW BATHROOM

- Washbasin with solid surface worktop
- Mirror
- Storage lockers
- Shower compartment with automatic pump out
- Extractor fan
- LED overhead lighting (24v)
- Bathroom accessories
- Solid surface flooring

CREW AREA

- Access from transom door and starboard side deck
- Access to engine room
- Storage space, cupboards and lockers
- Dinette sofa with folding table
- Crew mess with microwave, sink, refrigerator

and waste bin

- Thermoformed solid surface worktop
- Washing machine and separate tumble dryer
- LED overhead lighting (24v)
- Non-slip safety flooring

POWER AND DRIVE SYSTEMS

- Engine room soundproofed
- High volume air intakes
- Engine room extractor fan with electronic time delay
- Engine exhaust silencers and water-cooled exhausts
- Engine beds integrally moulded with hull for strength and vibration absorption
- Forward and aft engine room bulkheads integrally bonded
- Engines flexibly mounted
- Automatic fire extinguisher with remote override control
- Automatic and manual bilge pumps
- Propeller shafts in Marinemet
- 5-bladed propellers in nickel aluminum bronze
- High speed balanced rudders
- Cathodic protection for sterngear
- Sterngear, engines, fuel tank fillers, etc all

electrically bonded

- Engine room lighting
- Engine room access from crew area and from starboard side deck and transom via crew area
- Power-assisted electro-hydraulic steering system
- Trim tabs with indicators
- Electronic engine and gear shift controls
- Bow thruster with dual-station controls (340 kgf/749 lbf)
- Fresh water supply point in engine room
- Dripless self-aligning shaft seals

ELECTRICAL SYSTEMS

24 Volt:

- 2 x heavy-duty batteries for engine starting and windlass operation
- 6 x heavy-duty auxiliary batteries
- Battery link facility with remote control at helm position
- Both battery banks are charged using a voltage sensitive relay that parallels both battery banks when a charging source is present
- 2 x 80-amp 24v battery chargers
- Remote battery master switches with control switch at main switch panel

- Circuit breakers on all circuits
- 12v voltage dropper for certain navigation and radio circuits

220/240 Volt:

- 27kW generator in own sound shield with water-cooled and specially silenced exhaust
- 2 x 63-amp shore support inlet
- Generator/shore support change-over switch
- Polarity check system
- Earth leakage safety trip
- Circuit breakers on all circuits
- Power points (240v) in: owner's stateroom, guest cabins, galley and saloon area
- Shaver points in all bathrooms

FUEL SYSTEM

- Total fuel capacity is 2,420 gal / 2,905 US gal / 11,000l comprising 8,100l main tank and 2 x 1,450l day tanks
- Fuel polishing transfer system to day tanks with water and vacuum sensors connected to alarms at both helms
- Fuel fillers to port and starboard
- High-capacity duplex fuel filters /water traps with integral changeover valves and water

sensors connected to alarms at both helm positions

- Remote fuel isolation controls in cockpit locker for main engines and generators
- Dual station fuel gauges on helm consoles with additional back up mechanical sight gauge fitted to main fuel tank

WATER SYSTEM

- Water tanks totalling 285 gal / 342 US gal / 1,295l plus 45 gal /54 US gal /205l hot water calorifier
- 240v immersion heater
- Automatic water pump with filter
- Main circuit breaker at switch panel
- Water level gauge
- Deck filler
- Electric freshwater toilet system with 132 gal /158 US gal /600l holding tank, content gauge and low noise electric overboard discharge, with macerator backup system as well as dockside discharge system

AIR CONDITIONING SYSTEM

- Air conditioning/heating reverse cycle (204,000 BTU fan capacity with 144,000 BTU

chiller capacity) suitable for temperatures to 40°C (tropical) is fitted as standard incorporating a windscreen demist facility

- The standard generator is suitable

FIRE EXTINGUISHERS

- Automatic/manual override fire extinguishers in engine room with warning system at both helm positions and incorporating engine air vent closure system
- Hand operated fire extinguishers (9) in owner's stateroom, forward stateroom, port and starboard guest cabins, crew cabins (2), crew mess, galley and wheelhouse

BILGE PUMPS

- Automatic/manual override electric bilge pumps in engine room (2), rudder area and forward accommodation (8 in all)
- High-capacity manual bilge pump with valve system and suction points in same areas
- Electric bilge pumps have controls and warning lights at main helm and warning light with audible alarm at flybridge helm

OTHER STANDARD EQUIPMENT

- Ensign staff
- Fenders (8)
- Mooring warps (4)
- Boathook
- First-aid kit
- Tool kit
- Owner's manual and engine manual
- Quilted bedspreads supplied to all cabins (except crew cabin)
- Set of towels (8 large, 8 hand)
- Complete set of Lucrezia crystal glassware (8 settings consisting of tumbler, highball and wine glasses)
- Set of Sous Le Soleil crockery (8 settings consisting of plate, cake plate, dessert plate, bowl, cup and saucer)
- Set of stainless steel cutlery (8 settings of David Mellor "Paris" cutlery 7 pieces)
- Ship's document case
- Anchor winch back up handle

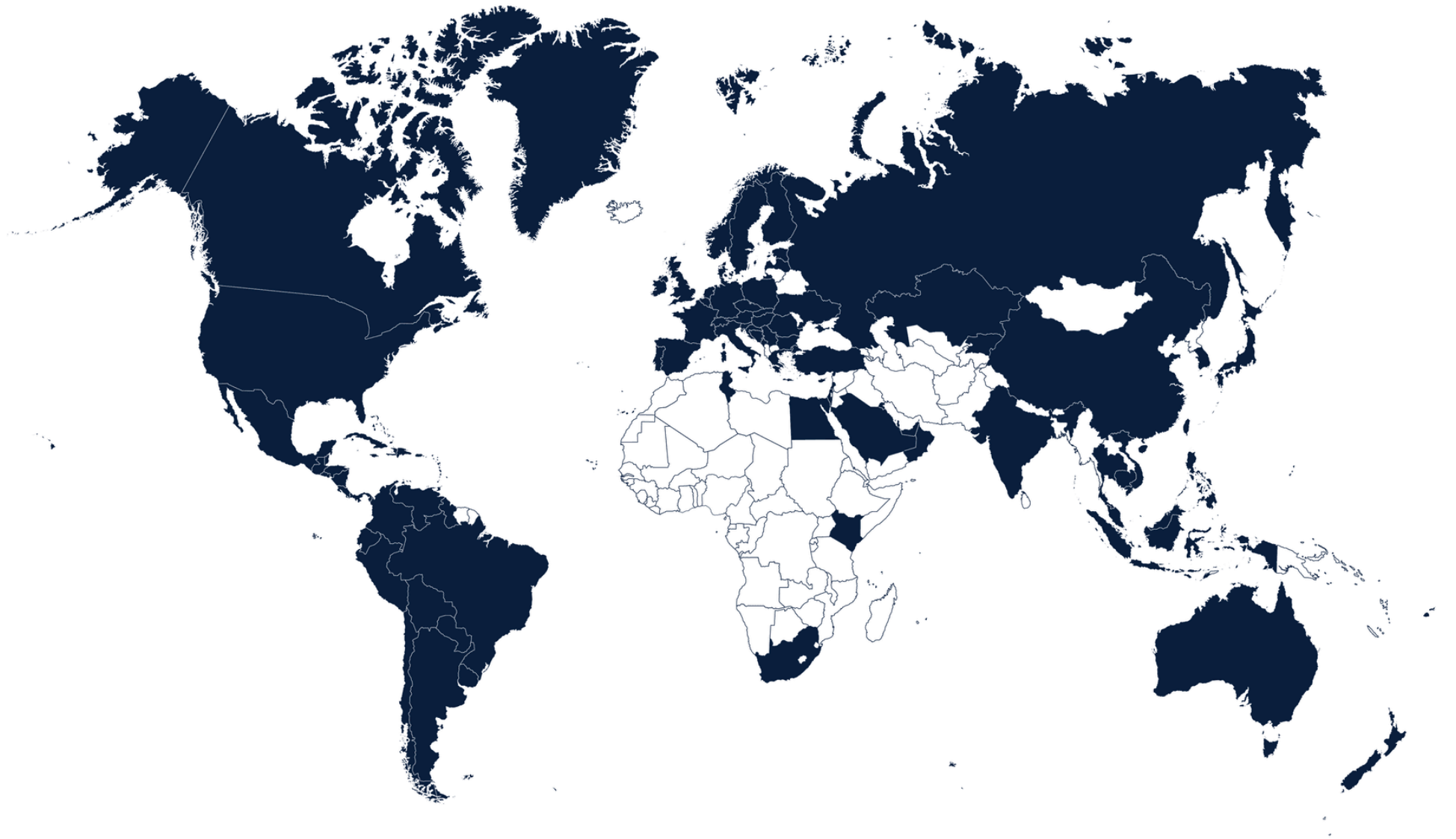
FINISHES

- Teak-laid decks to transom platform, cockpit deck, steps to side decks, side decks and foredeck walkthrough, steps to flybridge and

flybridge

- Timber floor (V groove planked) to galley and helm
- Furniture in choice of Alba Oak or Rovere Oak in satin finish. Silver Oak or Walnut with satin or gloss lacquer finishes available as an option.
- Marble/granite/quartz floors in all bathroom suites
- Marble/granite/quartz counter tops in all bathrooms
- Galley worktop in granite/quartz
- Choice of high-quality carpet and fabrics from extensive range
- Curtains, blinds or sunscreens to all windows and portholes
- Crew cabins have fitted carpet
- Crew bathroom floor is solid surface with white solid surface countertops
- Non-slip flooring to crew mess

GLOBAL COVERAGE





THANK YOU

For more information or to find a distributor,
please visit our [website](#).