

2012 DOMINATOR 780S

2 250 000 €



BROKERAGE

SPECIFICATIONS

Location	Croatia	Water capacity	1385 l
Year	2012	Cabins	4+2
Length	23.95 m	Berths	8+4
Beam	6 m	Engines	MAN V12
Draft	2.06 m	Max power	2 x 1800 hp
Displacement	60 tonnes	Engine hours	295 m/h
Fuel capacity	7500 l	Price	2 250 000 € (ex VAT)



Princess Yachts Monaco presents this elegant Dominator 780, delivered in 2012 and maintained in excellent condition. With a length of 24 meters and powered by twin MAN V12 engines (2 x 1800 HP) with only 295 engine hours, she offers exceptional performance and timeless Italian design.

This yacht accommodates 8 guests in 4 luxurious cabins with en-suites, plus 2 crew cabins, and features a spacious flybridge, a forward Jacuzzi, and a hydraulic swim platform. Equipped with full Simrad navigation, tropical A/C, and premium BOSE audio, she blends comfort with cutting-edge technology.

Currently lying in Croatia. Ready for viewings.

Contact us for full specifications and to arrange a private viewing.

”













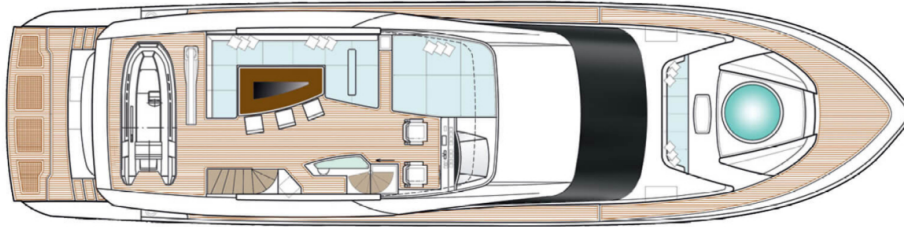




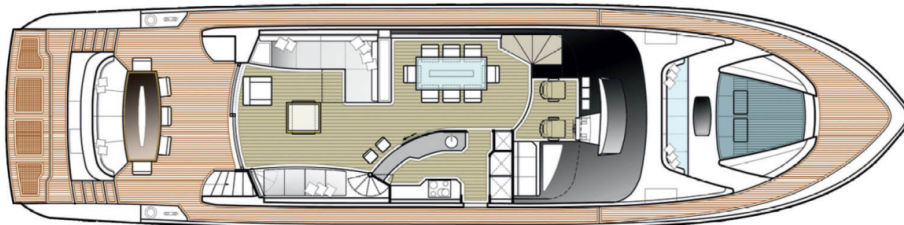




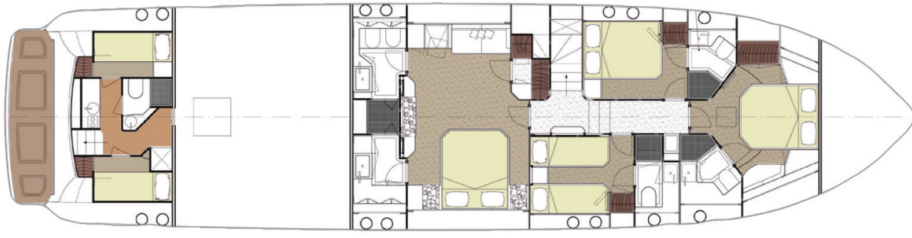
LAYOUTS



FLYBRIDGE



MAIN DECK



LOWER DECK

EQUIPMENT

FLYBRIDGE

Wide plexiglass windscreen with stainless steel supports

Simrad IS20 Combi

Besenzoni G309 electro-hydraulic crane, 400 kg lifting capacity

Simrad Autopilot AP28

Simrad Steering Lever S35

Fiberglass helm console, including

VHF Radio RAY 240E

Engine and gearbox gauges with LED indicators

Searchlight controls

Bow and stern thruster controls

Engine warning monitors

VDO alarm indicators

Engine control levers with emergency function

Trim tab controls

Rudder angle indicator

Intercom station

Fuel level gauge

Windlass control

Engine room temperature gauge

Raymarine G150
chartplotter/radar/GPS/fishfinder

Simrad IS20 Wind

Simrad IS20 Graphic

Simrad IS20 Compass

BAR

Stainless steel sink with hot and cold water taps

2 floodlights for the flybridge

Refrigerator

3 floodlights under the radar arch

Whirlpool barbecue

Navigation lights

TRACVISION TV KVH M7 antenna

Horn

RAYSTAR 125 SEATALK/NMEA GPS antenna

2 x 8-person Eurovinil life rafts

48" HD Open Array RADAR antenna

Hydraulic Bimini top with integrated LED lighting

2 waterproof stereo speakers

Main Deck & Cockpit

Exterior LED lighting along the side decks	Staircase lighting
LED handrail lighting	Small forward sofa with lockers, cushions, and waterproof cover
Water pipe for foredeck chain locker wash	Forward teak table in front of sofa with stainless steel pedestal and waterproof cover
PROJECT X4 2500W 24V windlass	Teak cockpit table with stainless steel supports and waterproof cover
Windlass control system	Cockpit sunshade
3 windshield wipers with washers	Engine room access from cockpit via stainless steel ladder
Foredeck sunpad area with external cushions, located port, starboard, and above spa pool; fiberglass and stainless steel handrails with waterproof cover	2 weather-resistant speakers in cockpit (main deck)
Fiberglass Jacuzzi with LED lighting	Besenzoni electro-hydraulic bathing ladder – model SI 402
Reinforced safety glass windows with sunshades	2 shore power cables and 220V 32A sockets with 20 m cable
2 electric warping winches on the foredeck (technical area)	Cockpit shower with hot and cold water
Sanguineti anchor, model SC92, 90 kg galvanized	Electric waterproof side door (Nemo) to galley
14 mm anchor chain, 100 m	Glendinning cable reel (one side)
Chain wash system	3 helm stations in the cockpit (engine start/stop, bow/stern thrusters, windlass)
SANSHIN spotlight on the bow	Infrared camera
LED ceiling lights in cockpit according to lighting plan T4	

Safety Equipment

1 lifebuoy	2 x 8-person life rafts
1 first aid kit	1 marine horn
1 life ring	1 ship's bell
1 floating line	7 x 2kg dry powder fire extinguishers
16 life jackets	

Swim Platform

Folding swim platform with H+B Technics hydraulic arms, 1000 kg lifting capacity
Usable lifting capacity (excluding platform weight): ~700 kg

Upper Deck — Salon

Leather sofas	Ice maker – CLASSIC REFILL PF DX 220-240V 50Hz
Coffee table	220V socket
1 sunlounger	Electric blinds
1 leather pouf	Wooden flooring
Starboard cabinetry with 40' TV	Marble floor at entry
Ceiling LED lighting	BOSE Dolby Digital Lifestyle 38 sound system
Bar with sliding partitions	HUMAX F3-FOX CI digital satellite receiver (central unit)
Portside dining area with large table for 8	ORION analog telephone

Galley

WHIRLPOOL EXTRACTOR IX hood	Wooden flooring
WHIRLPOOL 40L CRISP microwave	Marble countertop
BOSCH 4-burner ceramic cooktop	Fire extinguisher
Refrigerator + freezer, 250L (220V & 24V) (sea water cooled)	Full dinnerware set for 8 with glasses, stainless steel plates and cutlery
Stainless steel sink with hot/cold mixer tap	Blinds
Bosch dishwasher, model SRV 46A63	LED ceiling lights
Vertical storage cabinet	

Wheelhouse

1 leather pilot seat with electric adjustment	Curtains
LED ceiling lights	Access stairs with stainless steel safety handrail

Chart storage drawer	BCS hydraulic steering system
Wooden flooring	Infrared camera monitor (engine room and wheelhouse)

Lower Deck — Owner's Cabin

BOSE Dolby Digital Lifestyle 38 sound system	Walk-in wardrobe with lighting, drawers, and hangers
Humax F3 CI digital satellite receiver	Safe
2 bedside tables	Large windows with opening portholes
2 reading lights	220V socket
Leather sofa	Electric blackout blinds
Leather pouf lounge area	ORION analog telephone
Bulkhead-mounted 32" TV	

Owner's Bathroom

Hydromassage shower	Blinds
2 glass washbasins	Stainless steel porthole with mosquito screen
2 marble countertops	LED ceiling lights
Shower extractor fan	1 Tecma electric toilet (large)
220V socket	1 Tecma bidet
Marble flooring	2 large mirrors with halogen lighting

VIP Cabin

2 bedside tables	220V socket
2 wall lights at headboard	Sunshades
Halogen ceiling lights	BOSE Dolby Digital 3.2.1 GS
Stainless steel side portholes with mosquito screens	Humax F3-FOX CI digital satellite receiver (central unit)
Emergency hatch with ladder to forward main deck	25" LED TV

LED ceiling lights

ORION analog telephone

VIP Bathroom

Shower with teak floor

Marble flooring

Extractor fan

220V socket

Ceramic basin with marble countertop and storage

Blinds

Mirror with halogen lighting

Tecma electric toilet with bidet function

Hot/cold water mixer

LED ceiling lights

Stainless steel porthole with mosquito screen

Guest Cabins (x2)

BOSE Dolby Digital 3.2.1 GS

Headboard lamp

ORION analog telephone

220V socket

LED ceiling lights

Curtains

2 stainless steel portholes with mosquito screens and sunshades

25" LED TV

Guest Bathrooms

Extractor fan

220V socket

Shower with teak grating

Blinds

Ceramic/glass or marble washbasin

Tecma electric toilet with bidet function

Mirror cabinet with halogen lighting

LED ceiling lights

LED ceiling lights

Dedicated 3-way drainage system overboard (only in guest heads)

Stainless steel portholes with mosquito screens

Engine Room

2 x MAN 1800 HP main engines

Fully sound-insulated engine room

ZF 3050 V gearboxes, ratio 2714:1

Cathodic protection system with zinc anodes

V-drive configuration, stand-alone	95 mm stainless steel shafts with OTMAN shaft brackets, GRP stern tubes, and carbon/stainless shaft seals
Double-shaft coupling	
Driveshaft between engines and gearboxes	5-blade ROLLA Nibral 1067×1400 propellers

Power Supply

2 x ONAN MDKBF 22.5 kW generators (engine room)	3 x 80A battery chargers (Mastervolt) for service, engines, and generators
2 x 220V shore power sockets	

Lighting

220V main LED lighting	24V stair lighting
24V waterproof exterior LED lights	

Air Conditioning

Condaria PCWM/FCL 36003 tropical A/C, 144,000 BTU	Full climate control in all cabins, salon, dining area, and crew quarters
---	---

2012 DOMINATOR 780S

2 250 000 € (ex VAT)

+33 6 40 61 88 46 

m.st.pierre@princessyachtsmonaco.com

Follow Princess Yachts Monaco

