

2019 SANLORENZO SL106 | 32M

Price on application



BROKERAGE

SPECIFICATIONS

Location	Palma, Islas Baleares	Cabins	5
Year	2019	Engines	MTU 16V2000M96
Length	32.31 m	Max power	4800 hp
Beam	7.06 m	Max speed	26kn
Draft	1.98 m	Engine hours	2425 m/h
Fuel capacity	12416.14 l	Price	Price on application
Water capacity	2801.2 l		

DESCRIPTION



2019 Sanlorenzo SL106 | 32m is now available for purchase. Contact us today for more information, including the full specifications and details.

”















GALLERY





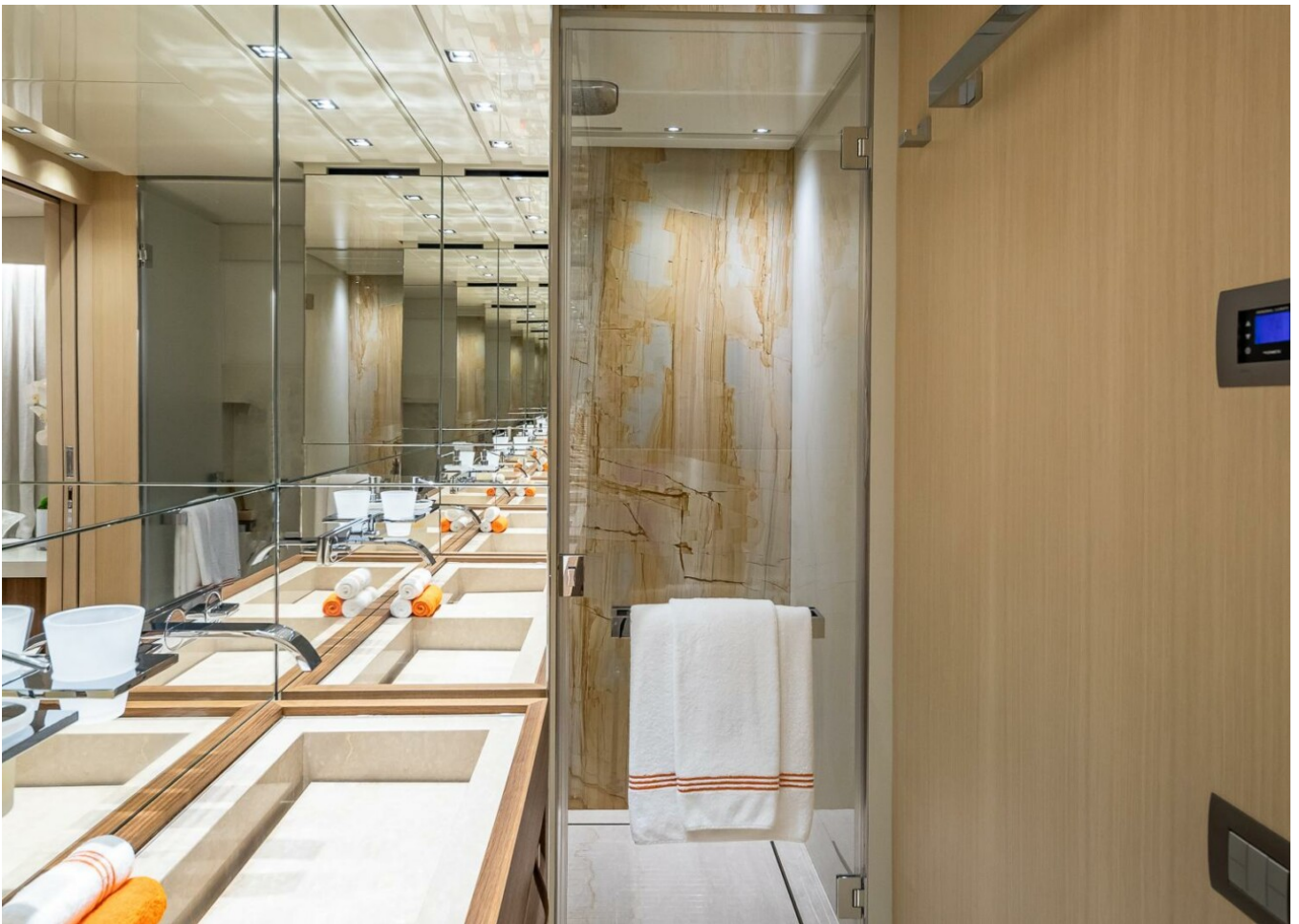
GALLERY



































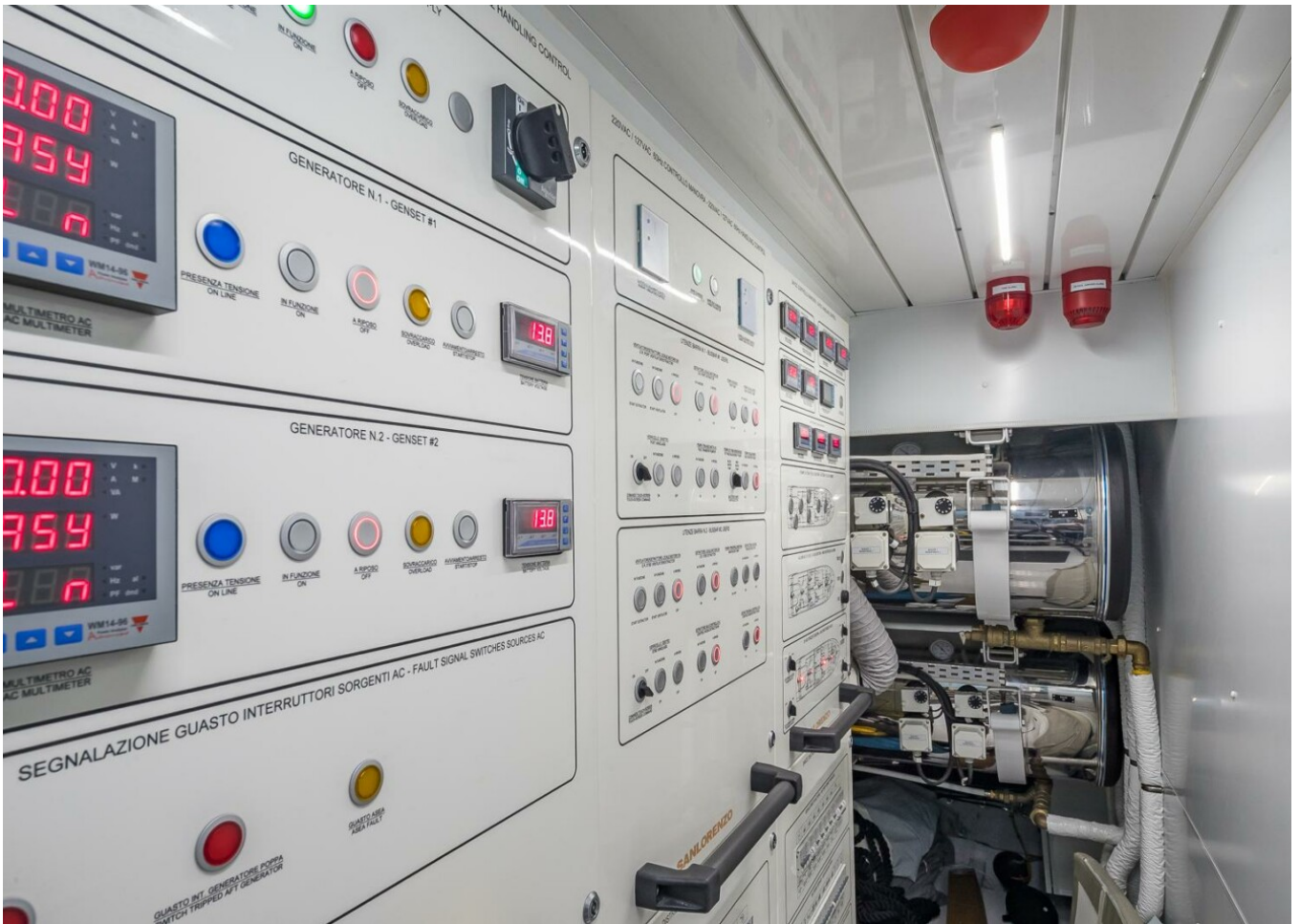
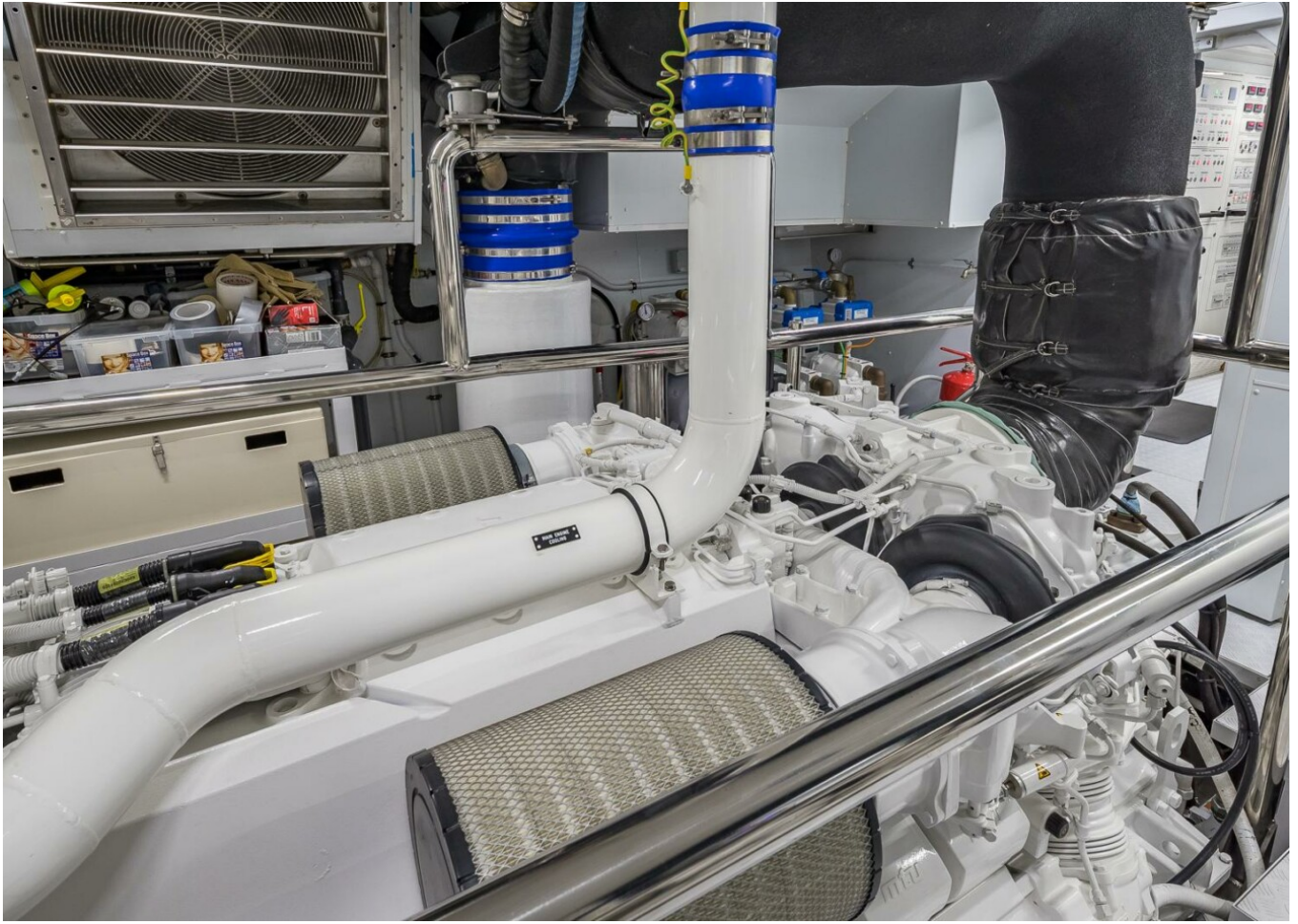














Engine Performance Details

Speed	Engine Oil Pressure PSI	Gear Oil Pressure PSI	Starboard Engine RPM	Engine Coolant Temp. F°	Engine Oil Pressure PSI	Gear Oil Pressure PSI	Engine Load %
	37	304	550	159	37	307	25/28
	106	316	1500	163	108	319	45/45
	106	320	1600	165	107	320	46/50
	108	322	1800	169	109	321	63/60
	109	324	2000	175	111	324	67/68
	108	327	2100	176	112	327	77/76
	112	328	2200	178	112	329	83/82
	111	332	2428	179	112	331	100/100

*** AVERAGE SPEED FROM TWO RUNS IN OPPOSITE DIRECTIONS****

2019 SANLORENZO SL106 | 32M

Price on application

Follow Princess Yachts Monaco

