

2021 PRINCESS X95 (2021)

€8 500 000



**BROKERAGE**

**HIGHLIGHTS**

- / 5 CABIN LAYOUT
- / UNDERWATER LIGHTS
- / ALL BIMINIS
- / FIN ZERO-SPEED STABILISERS
- / HEATED FLOOR IN ALL BATHROOMS
- / EXTRA CABINS SOUNDPROOFING
- / SKYLounge WITH JACUZZI
- / HIGH-END AV/TV FLIR CAMERA

**SPECIFICATIONS**

|                |         |              |                      |
|----------------|---------|--------------|----------------------|
| Location       | Turkey  | Cabins       | 5+3                  |
| Year           | 2021    | Engines      | MAN V12              |
| Length         | 29.11 m | Engine hours | 1250 m/h             |
| Beam           | 6.71 m  | Max power    | 2 x 1900 hp          |
| Draft          | 2.03 m  | Price        | 8 500 000 (VAT paid) |
| Fuel capacity  | 13400 l |              |                      |
| Water capacity | 1805 l  |              |                      |

Yachts on the commission of Princess Yacht Monaco. The Company is not responsible for the accuracy of the information provided by the Shipowner (images used, yacht specifications, parameters, engine performance, legal design issues). The operating time of the engines is indicated at the time of preparation of the information and may change during further operation. The need for an inspection remains at the discretion of the Buyer. Exact parameters and characteristics can be specified in the contract of sale. Additional information is available from the manager on request.

## DESCRIPTION

---



As the flagship of the Princess X Class, the X95 redefines luxury cruising with her superflybridge design, expansive layout, and impressive long-range capabilities. This particular yacht offers 5 beautifully appointed guest cabins, including a full-beam master suite on the main deck, ensuring exceptional comfort and privacy.

She comes with an exceptionally high specification, featuring an extensive list of options rarely seen on a yacht of this size – including a jacuzzi on the sundeck, fin stabilizers, and a Williams DieselJet 505 tender housed on the aft.

With vast interior volume, extended flybridge space, and seamless indoor-outdoor flow, this Princess X95 delivers a true superyacht experience in just under 30 metres.

”





GALLERY

---



GALLERY



GALLERY



GALLERY

---





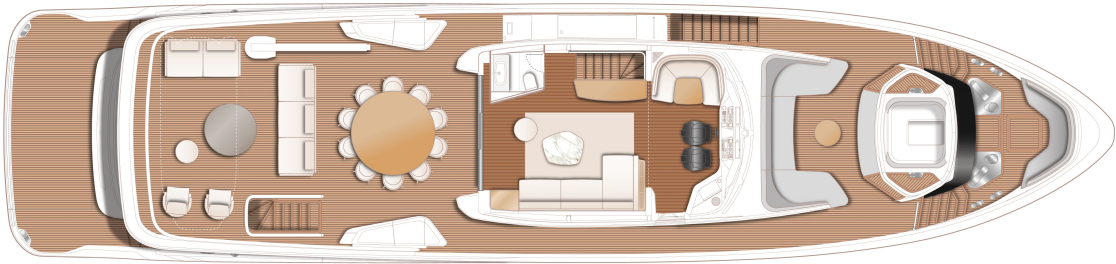






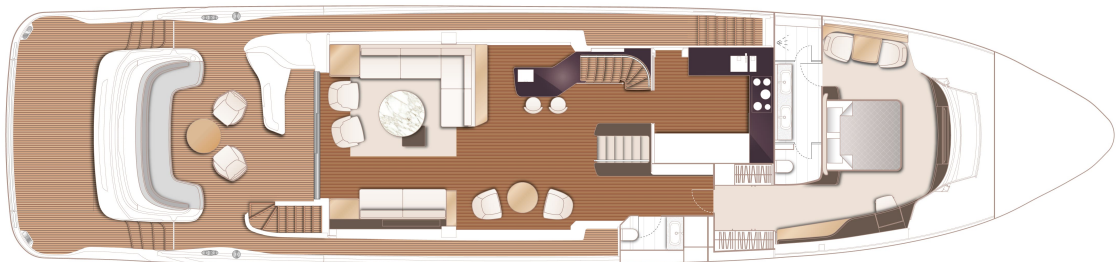
## LAYOUTS

---



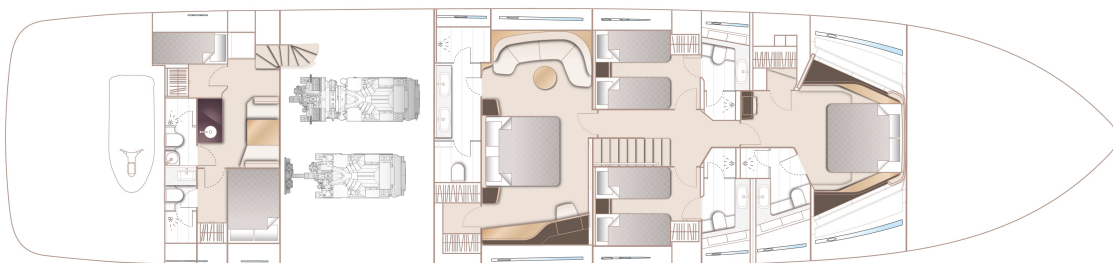
## FLYBRIDGE

---



## MAIN DECK

---



## LOWER DECK

---

## EQUIPMENT

---


### Interiors:

- SILVER OAK SATIN
- Galley worktop: Granite or Quartz;
- Electro hydraulic transformer platform with 1000Kg SWL fitted as standard;
- Electrical Continental 220v/240v sockets;
- Hydraulic Stern thruster (variable speed 420 Kg F);
- Flybridge coaming painted in Platinum metallic paint;
- Saloon & bar area floors to be in 'V' groove planked wood with inlaid rug\* in aft saloon area (wood type same as galley, dining & helm);
- Port cabin to have double berth conversion with powered sliding mechanism on inboard berth (not available if Pullman berth is specified);
- Deck saloon to have opening patio door on starboard in place of full height windows;
- Steam Shower fitted at Master and aft VIP cabin toilets ;
- Spa bath on foredeck (includes increased calorifier and water pump capacity) in place of standard Sun pad;
- Cockpit bar unit (including drawer refrigerator, icemaker, sink and storage cupboard);
- Stainless steel anchors in place of standard;
- Third station controls on starboard side of flybridge coaming (engine controls, thruster controls and engine emergency stops);
- Plug in carbon pole transom shower and deck socket to bathing platform;
- Optional top loading cool box in place of port foredeck storage locker;
- Upgrade horn to twin Kahlenberg including signal timer;
- Underwater transom lights 4x Lumishore THX 403 (Blue & White);
- Freshwater maker (190l/hr)
- Underfloor heating in bathrooms (5);
- Additional washer/dryer located in guest lobby area;
- Standard crew cabin layout with Wetbike garage with additional storage for seabobs (2);
- Standard hydraulic system
- International VHF;
- Joystick Aventics (Dual Station) (operates both engines, bow thruster and optional stern thruster);
- Sleipner Hydraulic system (consisting of separate engine driven hydraulic pumps on each engine with cross connections allowing ay system to be supplied with hydraulic power from either engine) and incorporating SPS92/VF1350 vector fin stabiliser system.
- Optional five (5) stateroom layout
- Starboard cabin to have double berth conversion with powered sliding mechanism on inboard berth (not available in Pullman berth is specified)
- Skylounge day head with basin, bidet and storage locker;
- Wall mounted bidet douche shower fitted at all guest toilets (7);
- Additional (navigation) helm seat in wheelhouse;
- Side entry gates to aft port & starboard side decks in addition to standard passerelle;
- 8mm teak decking upgrade throughout;
- Flybridge bar unit included in outboard sideboard (including drawer refrigerator, icemaker, sink and storage cupboard);
- Plug in carbon pole shower and deck socket to aft flybridge deck;
- Upgrade to two ONAN 50k W/50Hz generators (hours: 2237) to be fitted in place of standard;
- High impact mini dome anchor pocket camera x2 (one for each anchor);
- Dial in CCTV system with recording;
- 8x Lumishore THX 403 (4 per side);
- Technicomar EC Omar 20s sewage treatment plant;
- Miele Professional washing machine and tumble dryer fitted in crew area;
- Main deck Master Stateroom - 55" UHD Smart LED TV on power lift, Naim Uniti Atom audio system

- Cockpit seating area - Naim Uniti Atom audio system with Bluetooth
- Flybridge area to have 42" exterior TV on hinge down mechanism;
- Port guest cabin 28" HD LED TV, Naim Uniti Atom audio system
- Foredeck seating walk-through area - Naim Uniti Atom audio system
- KVH (TV8) Tracvision - in 80cm dome (linked to saloon and skylounge)
- Marine router acting as a single control point for Satphone (when selected), 3G/4G services and marine Wi Fi networks. Easily accessed and controlled via a web browser on any connected device, the router allows the owner and/crew to control and restrict internet connections
- Additional Raymarine Axiom X 19" brilliant colour multifunction display at
- Raymarine AIS Class B transponder interfaced with chartplotter & with 8ft (2.4m) aerial;
- Foredeck sun awning with 4 carbon fibre poles (grey mesh) and deck mounting sockets;
- Steam shower at the aft VIP cabin
- To supply and fit fuel station in garage with fuel delivered from day tank
- Fit additional acoustic insulation to the engine room bulkheads and deck head
- Lining of the hull sides with Dynamat extreme to minimize level of splashing water noise in lower cabins
- Tender Williams Diesel Jet 505 2020
- Cockpit seating area to have 42" exterior TV on hinge down mechanism;
- Starboard guest cabin 28" HD LED TV, Naim Uniti Atom audio system
- Crew mess 28" HD LED TV, Naim Uniti Atom audio system
- Internal telephone system with PBX exchange with handsets in all cabins (including crew cabin) and at helm position (includes forward/ dinette, optional main deck master);
- Satellite TV decoder (common interface) (10)
- FLIR camera (M625L);
- Additional Raymarine 12kw SHD 48" digital colour open array scanner
- Carbon fibre pole mounted awning to aft end of flybridge deck in charcoal grey mesh;
- Steam shower at the Master cabin
- Reticulated foam to all standard exterior cockpit and foredeck fixed furniture (loose furniture items on the sundeck and loose cockpit chairs, if selected, are not included)
- Optional Main Deck Master soundproofing
- Crew cabin Sound proofing - deck head/headlining to have Dynamat extreme and Rockwool added
- Multimedia control system i Pad based (additional two weeks for the labors required)
- Optional transom configuration - Incorporating aft lazarette area, 2 crew cabins with bunks in each, Captain's cabin with 1 bed and 2 separate bathrooms

2021 PRINCESS X95 (2021)

€8 500 000

+33 640 61 88 46 

m.st.pierre@princessyachtsmonaco.com

---

Follow Princess Yachts Monaco

