

## 2023 PRINCESS F50 (2023)

€1 330 000



BROKERAGE

### HIGHLIGHTS

- / LOW ENGINE HOURS
- / EXTERIOR DECKS FULLY IN TEAK
- / BIMINI TOP ON THE FLYBRIDGE
- / 3 CABINS
- / HYDRAULIC PLATFORM
- / EU VAT PAID
- / ONAN 11 KWT GENERATOR

### SPECIFICATIONS

Location	Antibes, France	Cabins	3+1
Year	2023	Berths	6
Length	15.7 m	Engines	Volvo IPS 800
Beam	4.3 m	Engine hours	320
Draft	1.39 m	Max power	2 x 600 hp
Fuel capacity	1850 l	Max speed	34 kn
Water capacity	428 l	Price	€1 330 000 (VAT paid)

## DESCRIPTION

---



We are delighted to offer this exclusive listing - Princess F50, delivered in 2023 and maintained in as-new condition with only 320 engine hours. Powered by twin Volvo IPS 800 (600hp) engines, she combines sporty performance with the efficiency and comfort ideal for Mediterranean cruising.

The main deck features a spacious sociable cockpit, seamlessly connected to the saloon and well-positioned galley for indoor and outdoor entertaining. Panoramic windows flood the interior with natural light, creating an inviting atmosphere throughout.

Below deck, she offers three beautifully appointed cabins for up to six guests, including a full-beam owner's suite, a forward VIP, and a twin cabin. Two elegant bathrooms with upgraded finishes complete the accommodation.

Contact us today for the full specification, photos, and video tour.



















GALLERY

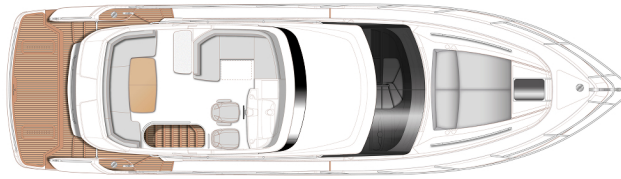
---





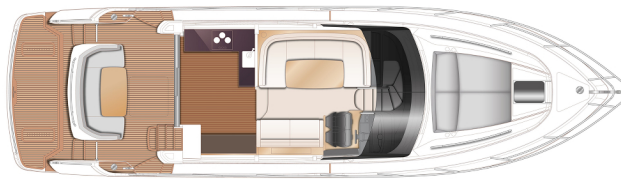
## LAYOUTS

---



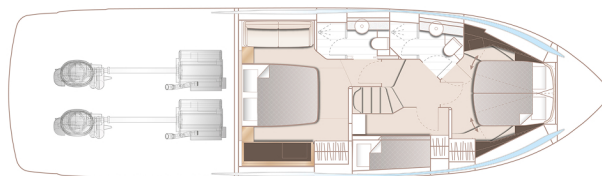
## FLYBRIDGE

---



## MAIN DECK

---



## LOWER DECK

---

## EQUIPMENT

---

### ALLURE COLLECTION II (Without Hard Top)

- Quilting detail with contrast piping and panelling to main deck helm seats
- Lower helm seat to be in Cirrus leather with Gunmetal contrast + Allure stitching
- Flybridge console finished in metallic Oyster Grey
- Exterior upholstery in Met Ice with Macadamia contrast
- Quilting detail with contrast piping and panelling to flybridge helm seats
- Teak step nosings upgrade (includes transom, flybridge, foredeck – steps to side deck when side deck option is selected)
- Foredeck sunbed cushions and adjustable headrests

### GALLEY

- Galley worktop to be Koko White

### BATHROOMS

- Bathroom countertops to be Koko White
- Heating in one WC floor (not in shower)
- Bathroom floors are Koko White Solid Surface (satin finish)

### COLOUR SCHEME

- Silver Oak satin wood interior
- Small rectangular quilting on bed covers
- Colour schemes from the Quartz VIII range of fabrics as standard

### DECK HARDWARE

- Transom platform to have electro-hydraulic raise/lower facility (450 kg SWL – max tender weight 300 kg) with dinghy chock system
- Additional 10m of 10mm anchor chain (total 50m)
- Teak to side decks and foredeck
- Opening window to portside of saloon
- Scandinavian pulpit, lowered opening in bow
- Side boarding gates to cockpit
- Stainless steel anchor in place of standard (20kg)
- Teak laid flybridge deck
- Chain meter counter for fore windlass at lower and upper helm
- Opacmare electro-hydraulic passarelle

### GENERATOR

- ONAN 11k W / 50Hz generator (with hydroush exhaust system) in place of standard

### ELECTRICAL

- Continental 220v/240v sockets
- Dishwasher in galley (drawer type – 6 place setting)

- Wine cooler (where icemaker is normally fitted)
- Dimmer switches to saloon, galley, cockpit and all cabins
- Fit copex with mouse from engine room to lower helm position and lower helm to upper helm

- Combination Washing machine/dryer (fitted below companionway stairs)
- Shorepower cable incl. adapter
- Watermaker

## AUDIO VISUAL & COMMUNICATIONS

- Deck saloon: Fusion Apollo MS-RA670 with DAB/Wifi and external USB, paired with Fusion speakers (2)
- Deck Saloon TV Package: 43" LED TV on a power lift mechanism linked to audio system
- Cockpit Audio Package: Fusion Apollo SRX-400 paired with Fusion waterproof speakers (2)

- Flybridge: Fusion Apollo SRX-400 Radio/Wi-Fi/Bluetooth, paired with waterproof Fusion speakers (2). Includes 2x Fusion ARX-70 wireless remotes
- Owner's Stateroom TV & Audio Package: 32" LED TV with a Fusion Apollo MS-RA770 with AM/FM/Bluetooth/DAB/WIFI and external USB, paired with Focal speakers (4) and subwoofer

## NAVIGATION

- Autopilot with rate gyro compass
- Second Garmin 16" colour multifunction display fitted at lower helm position
- Garmin XHD colour radar with 24", 4k W Radome
- Stern camera connected to plotter at lower and upper helm

- Volvo/Garmin 16" multifunction displays at lower and upper helm incorporating GPS/chartplotter, echo sounder, log trip as well as engine instrumentation and autopilot controls. Fuel gauge and helm position.
- Second Garmin 16" colour multifunction display at the upper helm
- Garmin electronic chart BLUECHART G3 VEU721L NORTHERN EUROPE
- Garmin 315 dual station VHF/DSC with intercom

## AIRCONDITIONING

- Reverse cycle air-conditioning / heating (56,000 Btu - tropical specification up to 40°C)

## HEATING / DEMIST

- Windscreen demist system using warm air heater powered from calorifier

## HOLDING TANK / TOILETS

- Electric discharge of holding tank

## EXTERIOR UPHOLSTERY / CANVAS / COVERS

- Exterior cushions to be Vogue Eucalyptus with Vogue STONE contrast
- Upper helm seat to be in Met Ice with Met Macadamia contrast (contrary to the other outdoor cushions) + Allure stitching

- Reticulated foam to foredeck sunpad cushion in place of standard
- Black Cover over cockpit table
- Black Cover over sun cushion
- Black Cover over cockpit sofa

## ACCESSORIES


- Princess China (5 piece consisting of plate, side plate, bowl, cup & saucer) - 6 place setting
- Princess Glasses - 6 wine, 6 tumblers
- David Mellor "Paris" Cutlery (6 pieces) - 6 place set

## CUSTOM SELECTIONS

- Black Styling blade
- Different colour of blinds
- Headboards in both cabins to be Gambie 43230111
- Underwater lights transom
- Manual bimini with black canvas
- Liferaft Ocean Safety Regatta 6 persons in a bag

2023 PRINCESS F50 (2023)

€1 330 000

+33 640 61 88 46 

m.st.pierre@princessyachtsmonaco.com

---

Follow Princess Yachts Monaco

