

2024 PRINCESS F45

1 150 000 €



BROKERAGE

## HIGHLIGHTS

/ BUILT 2024 - MINIMUM  
HOURS

/ SEAKEEPER STABILISER

/ FULL TEAK DECKING

/ POWERED SLIDING  
COCKPIT SOFA

/ ELECTRO-HYDRAULIC  
BATHING PLATFORM

/ ELECTRO-HYDRAULIC  
PASSERELLE

## SPECIFICATIONS

Location	Monaco, Monaco	Cabins	2
Year	2024	Berths	4
Length	14.35 m	Engines	Volvo IPS 650
Beam	4.25 m	Max power	2 x 480 hp
Draft	1.14 m	Max speed	31
Displacement	19 tonnes	Engine hours	80 m/h
Fuel capacity	1363 l	Price	1 150 000 € (ex VAT)
Water capacity	487 l		



Delivered in 2024 and showing only 80 engine hours, this Princess F45 is offered in as-new condition with maximum specification. Featuring rare options including Seakeeper stabilisation, she is one of the most highly equipped F45s on the market today.

Her design combines elegant lines with versatile outdoor spaces: full teak decking, a powered sliding cockpit sofa, hydraulic bathing platform, and electro-hydraulic passerelle ensure comfort and practicality. The flybridge, complete with wetbar and bimini, creates the perfect setting for Mediterranean cruising.

Inside, the light-filled saloon connects seamlessly to the cockpit, with accommodation for four guests across two en-suite cabins, including a full-beam master. Offered ex-VAT and available for viewings in Monaco at short notice, this is a rare opportunity to step into a virtually new Princess F45 without waiting for a new build.

”





















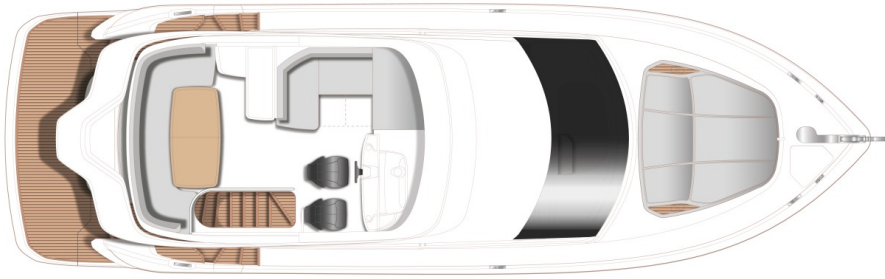






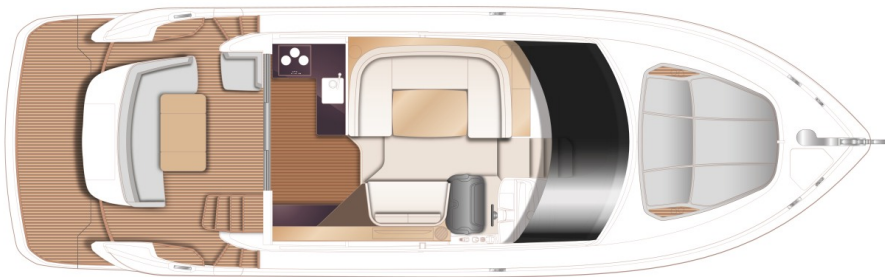
# LAYOUTS

---



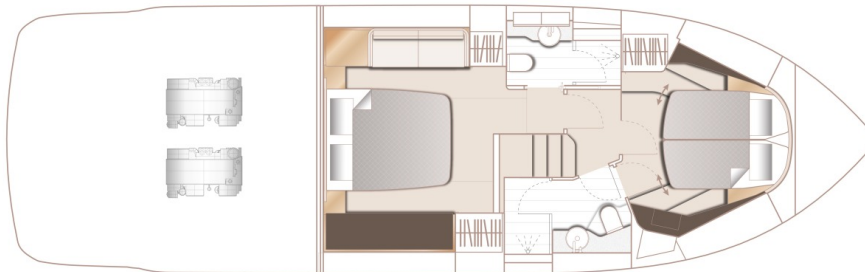
FLYBRIDGE

---



MAIN DECK

---



LOWER DECK

---

# EQUIPMENT

---

## Electronics

American version plotter

---

USA VHF

---

Second Volvo/Garmin 16' color multifunction display fitted at lower helm

---

Garmin AIS Class B transponder interfaced with chartplotters

---

On-board WiFi network with external WiFi and 3G/4G antenna

---

Volvo Dynamic Positioning System

---

Bow thruster (120 KgF) with dual station controls

---

## Electrical Equipment

ONAN 9.5 kW/50Hz generator (with hydrohush exhaust system)

---

Single Glendinning cablemaster

---

AGM 90Ah batteries (for start, domestic, and generator)

---

Electric discharge system with automated valve operation

---

Reverse cycle air conditioning/heating (58,000 Btu, tropical specification)

---

Windscreen demist system using warm air heater powered from calorifier

---

Multi sockets, in place of standard 220v/240v sockets

---

## Performance & Handling

Gyro Stabilization (Seakeeper 6) with upper helm control via chart plotter screens

---

Antifoul IPS drives & propellers

---

## Deck & Flybridge

Hull color: White Gel Coat Finish (dark grey waterline, black antifouling, white hull & bathing platform fendering with stainless steel insert)

---

Exterior upholstery in Met Ice with Met Macadamia contrast panels and piping

---

Optional flybridge wet bar (sink, electric griddle/BBQ, waste bin, top-loading coolbox)

---

Flybridge console finished in metallic Oyster Grey

---

Radar arch finished in metallic Graphite Grey

---

Teak step nosing upgrade (to include side decks)

---

Teak with black caulking (6mm) to flybridge deck

---

Teak with black caulking (6mm) to side decks (teak in cockpit - standard)

---

Cockpit seat with powered sliding mechanism and infill cushion (extends cockpit by 400mm)

---

Sliding tender chock system allowing cockpit seat to move into aft position without

(equipment mounted on radar arch left standard)

---

Quilting detail with contrast piping and paneling to flybridge helm seats

---

Bimini top - Grey canvas

---

Exterior covers - Grey canvas

---

Foredeck sunbed cushions with adjustable headrests

---

Foredeck sunbed with integrated headrest and contrast flat-stitched pleat

---

Foredeck freshwater anchor/deck wash system

---

deploying tender

---

Electro-hydraulic swimming platform (400 Kg SWL, max tender weight 150Kg) with dinghy chock system

---

Electro-hydraulic passerelle (2.5m letterbox type)

---

Additional 10m of 9.5 mm anchor chain (total 50m)

---

Stainless steel Ultra anchor and swivel (27kg)

---

Fit reticulated foam to all standard exterior cockpit, foredeck, and flybridge seating/sunpads

---

Fit reticulated foam to forward sunbed

---

## Accommodations

Forward cabin with scissor berth conversion

---

Sliding window to portside of saloon

---

Interior furniture: Walnut wood gloss finish

---

Galley worktops in Carrara White solid surface

---

Combination washing machine/dryer (below companionway stairs in Master cabin)

---

Dishwasher in galley (drawer type, 6 place setting)

---

Ceramic electric hob (3 burner) in place of diesel hob

---

Mosquito screens for all opening portlights

---

## Lighting & Additional Features

Underwater transom lights (2 LUMISHORE SMX 53 White)

---

Underwater lights to aft hull sides (4 LUMISHORE SMX 53 White) (2 per side)

---

Run all sink/shower outlets into standard grey water tank and grey water outlet into holding tank

---

## Additional Equipment

Princess China (5-piece set) - 6 place setting

---

David Mellor 'Paris' Cutlery (6-piece) - 6 place setting

---

Princess Glasses (6 wine, 6 tumbler)

---

Fender socks with Princess Logo - Grey (x6)

---

Ecoworks for Princess - complete boat sustainable cleaning solution

---

2024 PRINCESS F45

1 150 000 € (ex VAT)

+33 6 40 61 88 46 

[m.st.pierre@princessyachtsmonaco.com](mailto:m.st.pierre@princessyachtsmonaco.com)

---

Follow Princess Yachts Monaco

