

PRINCESS F55 (040)

1 256 800 €



HIGHLIGHTS

/ READY FOR DELIVERY

/ LARGE FLYBRIDGE

/ INCREDIBLY ELEGANT
LINES

/ STRONG SPECIFICATION

SPECIFICATIONS

Location	Monaco	Water capacity	608 l
Year	2018	Cabins	3
Length	17.60 m	Berths	6
Beam	4.87 m	Engines	2 x MAN I6
Draft	1.46 m	Max power	2 x 800 hp
Displacement	24.6 tonnes	Engine hours	10 m/h
Fuel capacity	2750 l	Price	1 256 800 € (ex VAT)



New flybridge yacht Princess F55 for sale. Located in Nonaco. Price Excl. VAT.

”



GALLERY







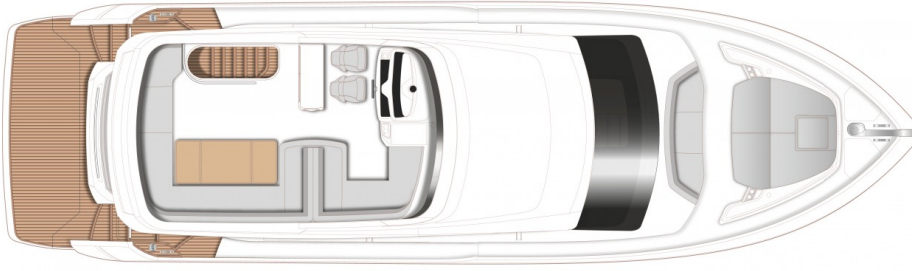


GALLERY

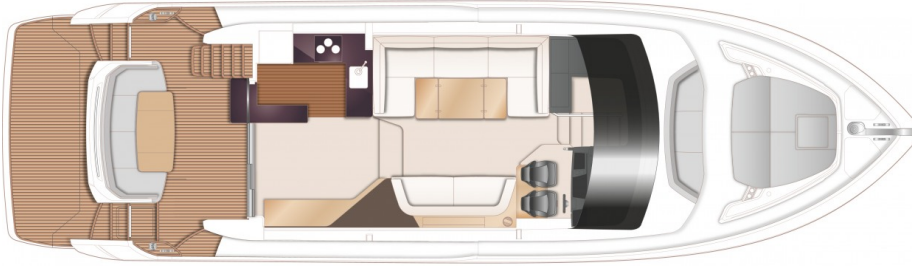




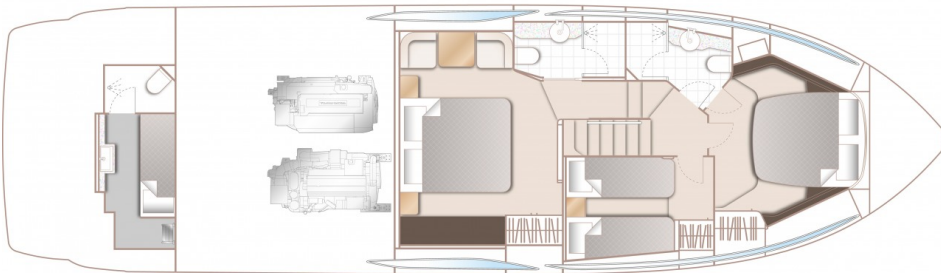
LAYOUTS



FLYBRIDGE



MAIN DECK



LOWER DECK

EQUIPMENT

Hull colour: White (with dark blue water line & black antifouling, hull & bathing platform fendering is white with stainless steel insert)

Teak laid side decks, foredeck and coachroof walkthrough, flybridge deck

Carrara White galley worktop

Bathroom floors to be in Carrara White in place of standard

Passerelle to be wired via the master switch in addition to it's own switch

International VHF

Continental 220V/240V sockets

Transom platform to have electro-hydraulic raise/lower facility (450Kg SWL -maximum advised tender weight 300Kg) with stainless steel keyway plates and slider system for later fitting of tender

Electro-hydraulic telescopic paserelle (2.9m) with automatic hand rails

Foredeck freshwater anchor I deckwash system

Aft Cabin fit out (single berth with separate WC and shower)

Starboard cabin to have double berth conversion with powered sliding mechanism on inboard berth

Additional 20m of 10mm anchor chain to give a total of 60 metres

Stern docking lights

ONAN 17.5kW/50 Hz generator in place of standard. (the 17.5kW generator is recommended when gyro - stabilisers or aircon are specified)

Dishwasher fitted in galley (slimline - 9 place setting)

Combination Washer/Dryer fitted below

Master stateroom -40' LED TV with Fusion MS-AV 755 Radio/DVD/MP3 player with Bluetooth facility

Garmin XHD colour radar with 24', 4Kw Radome (with display on standard 16' screen with allows separate or split displays with standard chartplotter and engine instrumentation)

Garmin remote control keypad (GRID) at the lower helm position

Garmin AIS 600 Class B transponder

Airconditioning/heating reverse cycle (78,000 BTU) suitable for temperatures to 40°C (tropical) With controls in all cabins and outlets in all areas (including bathrooms)
Recommended generator: 17.5kW

Aft cabin air conditioning Condensing unit 6,000BTU supplying 6,000BTU unit (with SMX control)

Windscreen demist system using warm air heater powered from calorifier

Mosquito screens for all opening port lights

Electric overboard discharge system in addition to standard manual system

Foredeck seating in Comfort Exterior II Met

Cockpit & Flybridge upholstery including helm seats - Comfort Exterior II Met

Flybridge Grey Sunbrella Supreme

Cockpit Grey Sunbrella Plus

Bimini Top- Charcoal Grey Sunbrella canvas

Bimini Top to be in two tone Sunbrella with linen underside

companionway stairs

“Exterior Lighting Upgrade Package”

Low level accent strip lights below flybridge wetbar and console, accent spots (3) on transom, additional 7 deck lights to side deck and foredeck area (total 13), pop up lanterns to flybridge forward dinette (2)

Stereo System: Deck Saloon -Harman Kardon 2.1 Blu-ray system (with Bluetooth connectivity) and KEF speakers

Master stateroom -Harman Kardon 2.1 Blu-ray system with Bluetooth connectivity and KEF speakers (linked to optional TV when ordered and in place of Fusion MS-UD650 Radio/iPod/MP3 player)

Cockpit -Fusion NRX300 Radio with waterproof speakers linked to saloon Harmon Kardon unit

Flybridge -Fusion MS-UD650 Radio/iPod/MP3 player with waterproof speakers linked to saloon audio system

Bimini to have LED overhead dimmable lighting (switched from console)

Interior design bureau service

Non standard materials and fabrics in interior (Hermes)

Additional charge for Scatter cushions and throws (Hermes)

Sea commissioning

Interior: Walnut wood Satin finish (galley floor is walnut as standard)- Saloon folding leaf dining table

PRINCESS F55 (040)

1 256 800 € (ex VAT)

+377 6 40 62 55 44 

c.oddone@princessyachtsmonaco.com

Follow Princess Yachts Monaco

