

PRINCESS F45

Price on application



SPECIFICATIONS

Location	United Kingdom, Plymouth
Length	14.15 m
Beam	4.25 m
Draft	1.09 m
Displacement	16.8 tonnes
Fuel capacity	1.300 l
Water capacity	487 l

Cabins	2
Berths	4
Engines	Twin Volvo IPS 600
Max power	2 x 435 hp
Max speed	29-31 †
Price	Price on application

EQUIPMENT

DECK FITTINGS

Teak-laid transom platform, cockpit deck, flybridge stairway and steps to side decks
Self-stowing 20kg/44lbs Delta anchor with 40m of chain
Reversible electric anchor winch with foredeck, helm position and flybridge controls
Stainless steel cleats, fairleads and handrails
Foredeck sunbathing area
Storage lockers for fenders and ropes
LED deck level lighting

COCKPIT

L-shaped seating with sliding mechanism and teak folding table
Twin transom gates leading to bathing platform (with optional electro-hydraulic raise/lower mechanism and dinghy chock system)
Transom bathing platform with foldaway swimming ladder and hot and cold shower
Lockable gas strut assisted hatch to engine room/ lazarette
Liferaft storage locker
Locker housing 220/240v shore support inlet
Cockpit cover

FLYBRIDGE

Dual station instrumentation, controls and alarm system including VHF/RT, speed and distance log, echo sounder with alarm and autopilot
Large U-shaped seating area with folding teak table
L-shaped seat (converts to a sunbed)
Twin helm seats with fore and aft adjustment for helmsman
Optional wetbar with barbecue, sink and refrigerated top loading coolbox
Waterproof speakers linked to saloon stereo
Console and seat covers

LOWER HELM POSITION

Double helm seat with fore and aft adjustment
Electric opening window
Full engine instrumentation including fuel gauges, exhaust temperature and engine warning system and rudder position indicator
Navigation system including VHF/RT, speed and distance log, echo sounder with alarm, autopilot and high speed magnetic compass

Controls for joystick, bow thruster, windscreen wipers, bilge pump and trim tabs with indicators
24v and 240v control panel
Red night lighting

DECK SALOON

Triple opening stainless steel framed sliding doors to aft cockpit
U-shaped sofa with dining table
Two-seater sofa
Naim audio system

GALLEY

3-zone hob
Combination microwave/convection oven with grill
Stainless steel sink with mixer tap
Twin refrigerator with one freezer compartment
Storage cupboards, drawers and lockers

ACCOMMODATION

All cabins and bathrooms feature opening portholes
All cabins feature 220/240v power points
All mattresses pocket sprung
All bathrooms feature full shower stalls, electric freshwater toilets, extractor fan and 240v shaver points

OWNER'S STATEROOM

Large double bed with drawers below
Wardrobe with shelves
Dressing table
Sofa
Storage lockers and drawers
En suite bathroom

FORWARD GUEST CABIN

Large double bed with drawers below (option of scissor berths)
Wardrobe with shelves
Vanity unit
Storage lockers and drawers
Deck hatch
En suite bathroom with day access

INTERIOR FINISHES: Buyer. Exact parameters and characteristics can be specified in the

Furniture in Rovere Oak with satin or high gloss finish. Walnut or Alba Oak available as an option
Solid surface worktops and tiled floors in all guest bathrooms
Solid surface worktop and timber-laid floor in galley
Choice of high quality carpet and upholstery fabric from extensive range
Blinds or sunscreens to all windows and portholes
POWER AND DRIVE SYSTEMS
Twin Volvo IPS-435 with joystick control
Power-assisted electro-hydraulic steering system with hydraulic back-up
Electronic engine controls
Volvo active corrosion protection system
Engine room extractor fan with electronic time delay
ELECTRICAL SYSTEMS
24 Volt:
4 x heavy duty batteries for engine starting
4 x heavy duty auxilliary batteries
60 amp battery charger charges both banks of batteries via an automatic switch charging system
Remote battery master switches with control switch at main panel
LED lighting throughout
220/240 Volt:
Shore support inlet
Earth leakage safety trip, polarity check system,circuit breakers on all circuits
Power points in all areas
FUEL SYSTEM
Twin fuel tanks (in NS8 marine grade alloy) with interconnection system giving 286 gal/343 US gal/1,300l capacity
Fuel fillers on port and starboard side decks

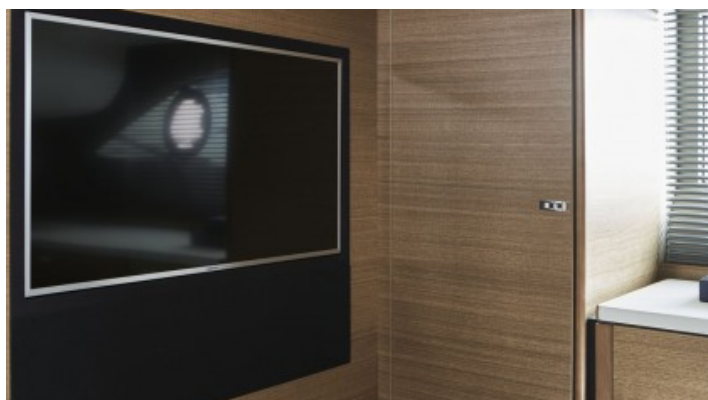
High capacity duplex fuel filters/water traps with audible and visual fuel contamination warning system
Remote fuel isolation controls in cockpit locker
WATER SYSTEM
93 gal/112 US gal/423l plus 7 gal/8 US gal/32l hot water calorifier, heated by engine and 240v immersion heater
Water level gauge
Deck filler
Electric freshwater WC system with 33 gal/40 US gal/150l holding tank
FIRE EXTINGUISHERS
Automatic/manual override fire extinguishers in engine room with warning system at both helm positions
Hand-operated fire extinguishers in all cabins, galley and lower helm (4)
BILGE PUMPS
Automatic electric bilge pumps (4)
High capacity manual bilge pump with valve system and suction points in same areas
OTHER ITEMS SUPPLIED AS STANDARD
Quilted bedspreads supplied to all cabins
Ensign staff
Fenders (4) and wraps (4)
First aid kit
Set of manuals
Tool kit

EXTERIOR

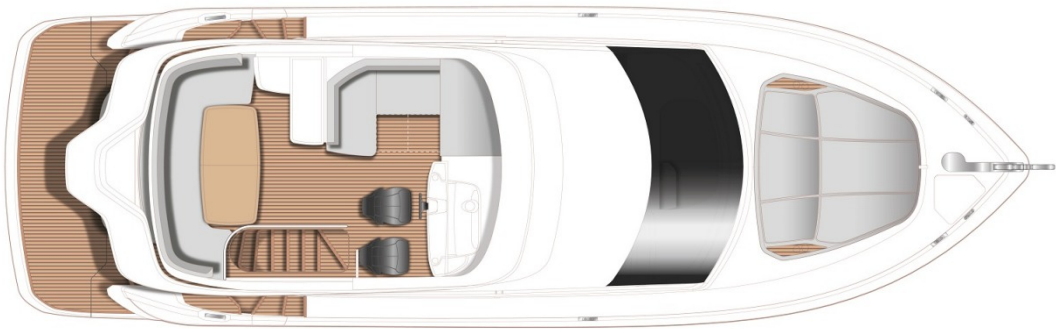


Yachts on the commission of Princess Yacht Monaco. The Company is not responsible for the accuracy of the information provided by the Shipowner (images used, yacht specifications, parameters, engine performance, legal design issues). The operating time of the engines is indicated at the time of preparation of the information and may change during further operation. The need for an inspection remains at the discretion of the Buyer. Exact parameters and characteristics can be specified in the contract of sale. Additional information is available from the manager on request.

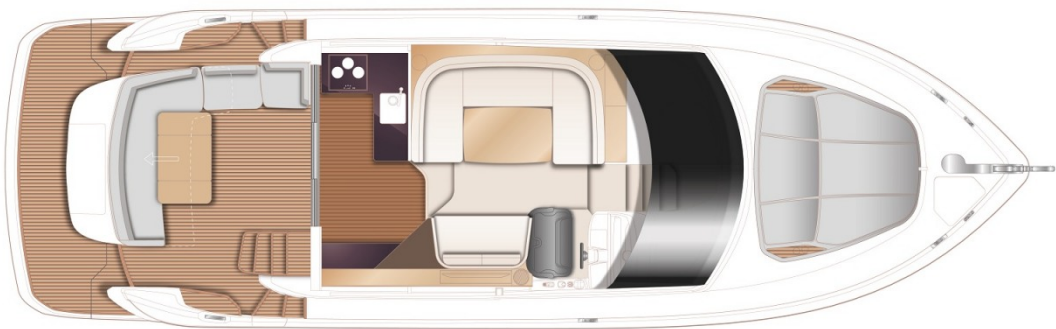
INTERIOR



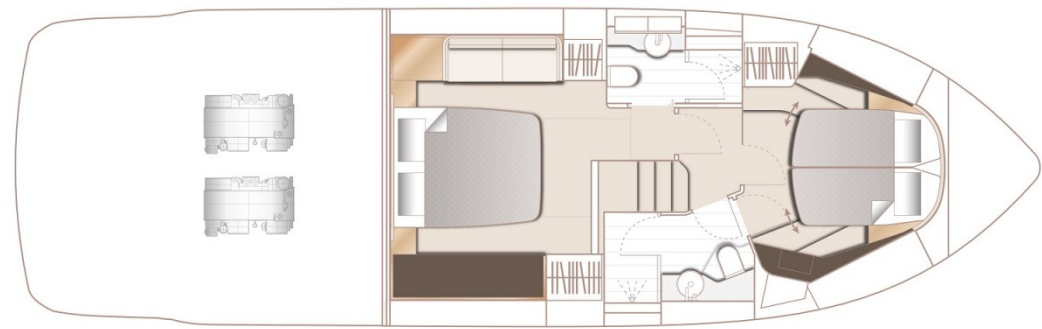
LAYOUTS



FLYBRIDGE



MAIN DECK



LOWER DECK
