

PRINCESS F50 (2026) (2026)

PRICE ON APPLICATION



YACHT IN STOCK

SPECIFICATIONS

Location	Monaco	Cabins	3
Year	2026	Engines	Volvo IPS 800
Length	15.65 m	Max power	2 x 600 hp
Beam	4.34 m	Max speed	36 kn
Draft	1.26 m	Price	1 435 900 (VAT excl.)
Fuel capacity	1850 l		
Water capacity	410 l		

## DESCRIPTION

---



Introducing the stunning 2026 Princess F50 – the latest evolution of the iconic F Class, blending cutting-edge design, luxurious comfort, and exhilarating performance.

This brand-new model is available for sale, offering spacious accommodation, refined craftsmanship, and exceptional handling at sea.

For full specifications, option details, and pricing, contact us today to learn more about this remarkable yacht.

”







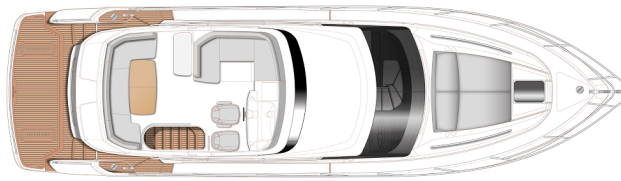






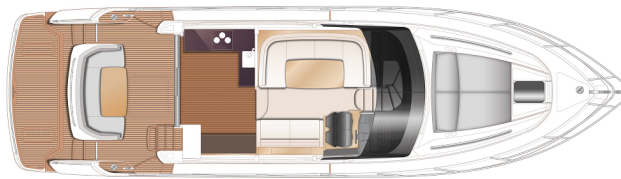
## LAYOUTS

---



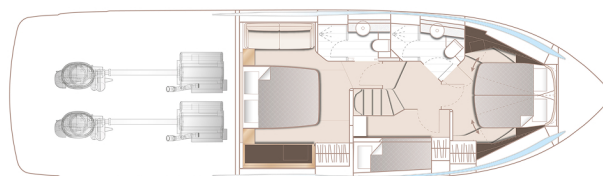
## FLYBRIDGE

---



## MAIN DECK

---



## LOWER DECK

---

## EQUIPMENT

---

### General

- HULL COLOUR: White Gel Coat Finish (with dark grey water line, black antifouling, hull & bathing platform fendering is white with stainless steel insert)
- Gyro Stabilisation - Quick X16
- Flybridge wetbar incorporating sink, electric griddle/ BBQ and storage
- Transom platform to have electro-hydraulic raise/lower facility (450Kg SWL - maximum advised tender weight 300Kg) with tender chock mounting system. Please note if both Gyro & Passerelle are fitted, the dinghy weight must not be greater than 125kg.
- Passerelle to be wired via the master switch in addition to its own switch
- Additional 10m of 9.5mm anchor chain to give a total of 50 metres
- Teak (6mm) with black caulking to side decks and foredeck
- Full height fridge/freezer (270ltr) fitted in galley in place of standard
- ONAN 11 k W / 50Hz generator (with hydrohush exhaust system) in place of standard (recommended if airconditioning and/or a gyro is fitted)
- Underwater transom lights (4 Lumishore SMX54 Blue/White)
- Dishwasher in galley (drawer type - 6 place setting)
- Bowthruster (120 Kgf) with dual station controls
- Walnut interior wood satin finish (helm foot rest and galley floor are V groove walnut as standard)
- Carrera White galley countertop
- Electro-hydraulic Passerelle (2.9m letterbox type) - with teak
- Dimmer switch for deck saloon lighting
- Stainless steel Lewmar Epsilon anchor with swivel in place of standard (20kg)
- Teak (6mm) with black caulking to flybridge deck
- AGM 140 Ah batteries in place of standard (start, domestic and generator batteries) (not required when E-vision thrusters are selected as the battery upgrade is included in this package)
- Continental 220v/240v sockets
- Foredeck freshwater anchor / deckwash system
- Icemaker fitted in fat saloon sideboard


### MAIN DECK

- Deck Saloon Audio Package Fusion Apollo MS-RA770 with AM/FM/Bluetooth/DAB/WIFI in place of standard Fusion Apollo MSRA670 • Paired with Focal speakers (4) • Subwoofer
- Owners Stateroom TV & Audio Package • 32" LED TV
- Paired with Focal speakers (4)
- Garmin GMR 24 x HD3 colour radar with 24"', 4Kw Radome (with display on standard 16"' screen which allows separate or split displays with standard chartplotter and engine instrumentation)
- European version plotter
- Windscreen demist system using warm air heater powered from calorifier
- Deck Saloon TV Package •43"' LED TV on a power lift mechanism linked to audio system
- Fusion Apollo MS-RA770 with AM/FM/Bluetooth/DAB/WIFI
- Cockpit Audio Package •Fusion Apollo SRX-400. Paired with Fusion waterproof speakers (2)
- Garmin AIS Class B transponder interfaced with chartplotters
- International VHF
- Tempered water Air Conditioning/heating reverse cycle (63,000 BTU fan capacity with 48,000 BTU chiller capacity) suitable for temperatures to 40°C (tropical) with controls in all cabins and outlets in all areas (including bathrooms)

- Mosquito screens for all opening portholes
- Cockpit and Flybridge upholstery including helm seats in Comfort Exterior IV MET/LINETEX/TANNERY Main Upholstery Colour: MET MACADAMIA
- Fit reticulated foam to foredeck sunpad cushion in place of standard. Note only applicable with Foredeck sunbed cushion option
- Exterior canvas - Grey canvas
- Additional Charge for Bimini to have LED dimmable overhead lightning
- Davide Mellor Paris Cutlery ( 6 place setting )
- Additional charge for Milan X fabrics
- Carpet: MALDIVES TUSK
- Electric discharge In addition to the manual overboard and dockside discharge facilities an electric overboard discharge system is fitted. The electric overboard discharge system incorporates an electric valve with timer. When the pump is turned on a time delay allows the electric valve to open before the pump starts. When the pump is switched off the valve closes. This means the through hull seacock does not need to be opened/closed every time the pump is switched on. The through hull seacock is itself fitted with a micro switch which prevents operation of the pump when it is closed. The electric valve has a manual override facility
- Foredeck Sunbeds with integrated headrest- Comfort Exterior IV MET/LINETEX/TANNERY - no contrast. Main Colour: MET MACADAMIA
- Fit reticulated foam to all standard exterior cockpit and flybridge seating in place of standard
- Bimini top Grey Canvas
- Princess China (6 place setting )
- Fender Socks with Princess Logo (each) (Grey)
- Helm seat upholstery leather upgrade with allure styling Helm seat in Putty leather with Arrow wood Novasuede contrast accents and added quilting.

PRINCESS F50 (2026) (2026)

PRICE ON APPLICATION

+33 640 61 88 46 

m.st.pierre@princessyachtsmonaco.com

---

Follow Princess Yachts Monaco

