

PRINCESS F58

Price on application



STOCK

HIGHLIGHTS

/ ALL NEW

/ IN STOCK

SPECIFICATIONS

Location	After request	Cabins	3
Year	2020	Berths	6
Length	18.2 m	Engines	MAN V8
Beam	4.90 m	Max power	2 x 1000 hp
Draft	1.54 m	Max speed	31
Displacement	78 tonnes	Engine hours	Contact seller
Fuel capacity	3300 l	Price	Price on application
Water capacity	630 l		



The yacht with delivery early 2026! Please contact for further details. The all-new Princess F58 is the latest addition to the acclaimed F-Class series and is unmistakably Princess. Elegant lines, exceptional space and a level of specification and standard of finish normally reserved for much larger craft. This is no truer than with her exterior spaces which have been designed with sociability and relaxation very much in mind. From the vast flybridge that has been designed to maximise guest space, to the foredeck 'terrace' which is large enough to entertain or simply offer a tranquil place to relax, and is a very popular feature borrowed from our larger yachts. Or, the generous cockpit that flows seamlessly into the saloon and down on to the bathing platform which is itself equipped with seating and an optional BBQ to create a mini beach club adjacent to the water.

”



























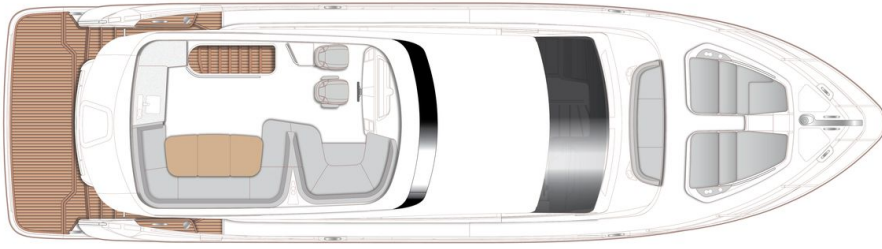




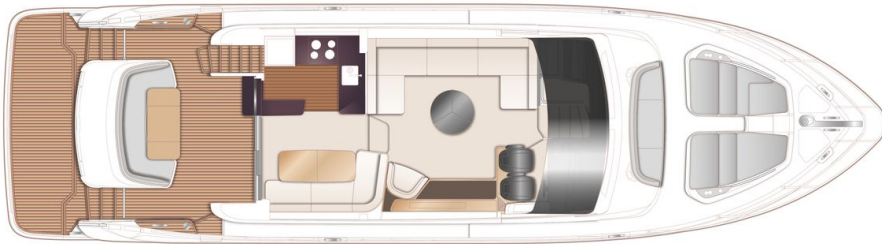




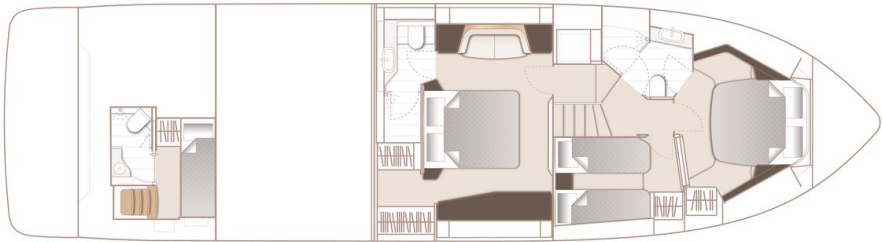
LAYOUTS



FLYBRIDGE



MAIN DECK



LOWER DECK

EQUIPMENT

DECK FITTINGS

Teak-laid transom platform, transom steps, cockpit deck, flybridge stairway and steps to side deck

Reversible electric anchor winch with foredeck and main helm controls

Stemhead roller with automatic anchor launch and retrieve

Self-stowing anchor system incorporating one 32kg galvanised Lewmar Delta anchor with 40m of 9.5mm galvanised anchor chain

Deck hatch access to chain locker – 2 lockers forward

Stainless steel fairleads, with chafing plates (1 pair)

Stainless steel bow, stern and spring cleats, with chafing plates (4 pairs)

Stainless steel pulpit and guard rails

PVC rubbing band with stainless steel insert

LED deck level lighting

Illuminated crown logo on transom

Full set of IMO navigation lights

Riding light

Searchlight with remote controls

Loudhailer (connected to VHF)

Twin electric horns

Ensign socket

Fuel and water fillers (one per side)

Black water holding tank dockside discharge connection

Teak-laid transom platform, transom steps, cockpit deck, flybridge stairway and steps to side deck

Reversible electric anchor winch with foredeck and main helm controls

Stemhead roller with automatic anchor launch and retrieve

Self-stowing anchor system incorporating one 32kg galvanised Lewmar Delta anchor with 40m of 9.5mm galvanised anchor chain

Deck hatch access to chain locker – 2 lockers forward

Stainless steel fairleads, with chafing plates (1 pair)

Stainless steel bow, stern and spring cleats, with chafing plates (4 pairs)

Stainless steel pulpit and guard rails

PVC rubbing band with stainless steel insert

LED deck level lighting

Illuminated crown logo on transom

Full set of IMO navigation lights

Riding light

Searchlight with remote controls

Loudhailer (connected to VHF)

Twin electric horns

Ensign socket

Fuel and water fillers (one per side)

Black water holding tank dockside discharge connection

Foredeck escape hatch	Foredeck escape hatch
Foredeck seating area with fender storage and drink holders (2)	Foredeck seating area with fender storage and drink holders (2)
Foredeck sunbathing area incorporating fixed twin sunpads with integrated storage and drink holders (4)	Foredeck sunbathing area incorporating fixed twin sunpads with integrated storage and drink holders (4)
Foredeck sunpad covers	Foredeck sunpad covers
Portside fender storage locker	Portside fender storage locker

COCKPIT AND BATHING PLATFORM

Self-draining	Self-draining
Fixed bathing platform	Fixed bathing platform
Upholstered U-shaped seating	Upholstered U-shaped seating
Folding teak dining table with cup holders (4)	Folding teak dining table with cup holders (4)
Stainless steel handrails	Stainless steel handrails
LED overhead and deck level lighting	LED overhead and deck level lighting
Integral stairway to flybridge with teak-laid step treads	Integral stairway to flybridge with teak-laid step treads
LED lighting to step faces	LED lighting to step faces
Life raft storage locker under flybridge stairs	Life raft storage locker under flybridge stairs
Rope storage	Rope storage
Lockable gas strut assisted hatch to lazarette/engine room	Lockable gas strut assisted hatch to lazarette/engine room
Locker containing remote fuel cocks, manual bilge pump with valve chest and manual controls for automatic fire extinguishers	Locker containing remote fuel cocks, manual bilge pump with valve chest and manual controls for automatic fire extinguishers
Transom top locker	Transom top locker
Twin transom gates leading to bathing platform	Twin transom gates leading to bathing platform
Hot and cold flatwash transom shower	Hot and cold flatwash transom shower
220/240v shore support inlet	220/240v shore support inlet
Cockpit cover	Cockpit cover

LOWER HELM

Twin leather upholstered manual seat with fore and aft adjustment for helmsman	Dual station instrument and controls console at lower helm
Instrument console with controls incorporating engine instruments and fuel gauges	
- 16" colour MFD incorporating GPS/chartplotter, log, echo-sounder	
Drink holders (3)	Bilge pump controls with visual pump running warnings
Electric drop window (starboard)	
Toughened glass screen (clear for night vision)	24v and 240v electrical control panel
Windscreen wipers with freshwater windscreen wash	Riding light, helm and navigation light control switches
Glove box to portside dash	USB charging points (2) (USB-A and USB-C)
Exterior black mesh windscreen covers	LED overhead lighting (24v) and night lighting
	Fitted carpet
<ul style="list-style-type: none">- 9" MFD screen displaying engine instrumentation (including fuel levels and fuel flow)- Power-assisted electro-hydraulic steering- Adjustable steering wheel- High-speed magnetic compass- Electronic engine controls- Trim tab controls with indicators- Bow thruster control- Electric anchor winch remote control- Autopilot- Speed and distance log- Echo sounder with alarm- VHF with DSC R/T with intercom- Remote control searchlight- Horn button (to operate twin electric horns)- Audible and visual alarm engine warning system- Audible and visual alarm for bilge pumps- Engine room fire extinguisher warning system- Footrest	
Dual station instrumentation and controls (see Lower Helm Position)	Small U-shaped seat (starboard), with conversion to sunpad
Power assisted electro-hydraulic steering with adjustable steering wheel	U-shaped upholstered seating area (starboard)
Wind deflector screens	Drink holders (8)
Twin manual helm seats with fore and aft adjustment for helmsman	Folding teak table with drink holders (4)
Audible and visual alarm for bilge pumps	Servery with sink, storage, electric barbecue and bin
	Fusion MS-SRX400 audio system, paired with

Engine room fire extinguisher warning system	Fusion Signature 7.7" waterproof speakers (2)
Clear view hatch to aft cockpit	LED deck level lighting
Access stairway to aft cockpit	USB-A charging points (2)
Stainless steel handrails	GRP radar arch
Stainless steel handrail around flybridge hatch	Twin matching whip aerials for VHF R/T and radio
Top loading cool box in navigators pedestal moulding	Covers to console and exterior furniture where appropriate

FLYBRIDGE

U-shaped sofa (port) with storage drawers below	U-shaped sofa (port) with storage drawers below
Coffee table	Coffee table
Electric drop window (port)	Electric drop window (port)
Crockery storage drawer	Crockery storage drawer
Sideboard unit with bottle and glass storage and refrigerator	Sideboard unit with bottle and glass storage and refrigerator
50" LED TV on rise and fall	50" LED TV on rise and fall
Fusion MS-RA770 audio system, paired with Focal 100 ICW6 speakers (2)	Fusion MS-RA770 audio system, paired with Focal 100 ICW6 speakers (2)
Panoramic tinted toughened glass windows port and starboard	Panoramic tinted toughened glass windows port and starboard
Manual Venetian blinds to all windows	Manual Venetian blinds to all windows
LED overhead and concealed lighting (24v)	LED overhead and concealed lighting (24v)
Access stairway to lower accommodation	Access stairway to lower accommodation
Fitted carpet	Fitted carpet

DECK SALOON

L-shape sofa to starboard	LED overhead and concealed (24v)
Folding dining table	Manual Venetian blinds to windows
Stainless steel framed sliding door to cockpit. Three panes with integrated hinging window aft	Manual blind to door

of galley (one fixed pane, two sliding panes, one flip up window)

Fitted carpet

220/240v power outlets (1)

USB charging points (2) (USB-A and USB-C)

DINING AREA

Galley counter top is Solid Surface in White (satin finish)

Waste bin

4-zone ceramic hob

Drawers and storage cupboards

Hob extractor fan

Corner galley storage bin (top loading) with work top lid

Twin top lockers

220/240v power outlets (4)

Combination microwave/convection oven with grill

Manual Venetian blinds to windows

Full height fridge/freezer (270l)

Timber-laid flooring (V-groove planked)

Sink is stainless steel with mixer tap

GALLEY

All cabins and bathrooms feature opening portholes

Fusion Apollo MS-RA670 audio system paired with Focal 100 ICW6 speakers (2)

All cabins feature 220/240v power points and USB charging points

Panoramic windows including opening portholes

All bathrooms feature electric freshwater toilets and 240v shaver points OWNER'S STATEROOM

Manual Venetian blinds to all windows

Large double bed with bedside tables and drawers below

LED overhead and concealed lighting (24v)

Two-seater sofa to port, with cupboard storage

Individual berth lights

Walk-in wardrobe to starboard with shelves and mirror

220/240v outlets (2)

Sideboard unit to starboard

USB charging points (4) (2x USB-A and 2x USB-C)

Pull out mirror to vanity draw in sideboard unit

Fitted carpet

ACCOMODATION

Solid Surface vanity top and thermoformed sink	Window with opening porthole
Mirror with medicine cabinet unit	Manual Venetian blind to window
Storage lockers	LED overhead and concealed lighting (24v)
Shower compartment with automatic pump out	Bathroom accessories (toilet roll holder, toilet brush and holder, soap dispenser, toothbrush tumbler and robe hooks)
Extractor fan	Solid Surface flooring

EN-SUITE BATHROOM

Large double bed with drawers below	Large double bed with drawers below
Half height mirror above sideliner, with storage behind (port)	Half height mirror above sideliner, with storage behind (port)
Wardrobe with shelves and mirror	Wardrobe with shelves and mirror
Top lockers	Top lockers
Windows with opening portholes	Windows with opening portholes
Manual Venetian blind to all windows	Manual Venetian blind to all windows
Deck escape hatch	Deck escape hatch
LED overhead and concealed lighting (24v)	LED overhead and concealed lighting (24v)
Individual berth lights	Individual berth lights
220/240v outlets (2)	220/240v outlets (2)
USB charging points (4) – two per side (2x USB-A and 2x USB-C)	USB charging points (4) – two per side (2x USB-A and 2x USB-C)
Fitted carpet	Fitted carpet

FORWARD CABIN

Accessible from both the lobby/passage way and forward cabin	Window with opening porthole
Solid Surface vanity top and thermoformed sink	Manual Venetian blind to window
Mirror with storage	LED overhead and concealed lighting (24v)
Storage lockers	Bathroom accessories (toilet roll holder, toilet brush and holder, soap dispenser, toothbrush tumbler and robe hooks)

Shower compartment with automatic pump out	Solid Surface flooring
Extractor fan	

EN-SUITE BATHROOM/DAY HEAD

Two single beds with drawers below	LED overhead and concealed lighting (24v)
Bedside table	Individual berth lights
Wardrobe with shelves and mirror	220/240v outlet (1)
Top lockers	USB charging points (2) (USB-A and USB-C)
Window with opening portholes	Fitted carpet
Manual Venetian blind to window	

STARBOARD GUEST CABIN

Storage for detergent and laundry equipment	Double height storage locker
Under-stair storage locker	LED overhead lighting (24v)

LOWER LOBBY / PASSAGEWAY AREA

Propeller shafts in Marinemet	Engine exhaust silencers and water-cooled exhausts
5-bladed propellers in nickel aluminium bronze	Engine beds integrally moulded with hull for strength and vibration absorption
Bow thruster 170kgF with dual-station controls	Engines flexibly mounted
High speed balanced rudders	Automatic fire extinguisher with remote override control
Power-assisted steering system	Automatic and manual bilge pumps
Trim tabs with indicators	Engine room lighting
Cathodic protection for sterngear	Engine room access hatch and ladder
Sterngear, engines, fuel tank fillers, etc all electrically bonded	Electronic engine and gear shift controls
Forward and aft engine room bulkheads and engine room headlining to be integrally bonded including insulation with acoustafoam layers	Fresh water supply point in engine room
High volume air intakes	Dripless self-aligning shaft seals
Engine room extractor fan with electronic time	

delay	Propeller shafts in Marinemet
Engine exhaust silencers and water-cooled exhausts	5-bladed propellers in nickel aluminium bronze
Engine beds integrally moulded with hull for strength and vibration absorption	Bow thruster 170kgF with dual-station controls
Engines flexibly mounted	High speed balanced rudders
Automatic fire extinguisher with remote override control	Power-assisted steering system
Automatic and manual bilge pumps	Trim tabs with indicators
Engine room lighting	Cathodic protection for sterngear
Engine room access hatch and ladder	Sterngear, engines, fuel tank fillers, etc all electrically bonded
Electronic engine and gear shift controls	Forward and aft engine room bulkheads and engine room headlining to be integrally bonded including insulation with acoustafoam layers
Fresh water supply point in engine room	High volume air intakes
Dripless self-aligning shaft seals	Engine room extractor fan with electronic time delay
Propeller shafts in Marinemet	Engine exhaust silencers and water-cooled exhausts
5-bladed propellers in nickel aluminium bronze	Engine beds integrally moulded with hull for strength and vibration absorption
Bow thruster 170kgF with dual-station controls	Engines flexibly mounted
High speed balanced rudders	Automatic fire extinguisher with remote override control
Power-assisted steering system	Automatic and manual bilge pumps
Trim tabs with indicators	Engine room lighting
Cathodic protection for sterngear	Engine room access hatch and ladder
Sterngear, engines, fuel tank fillers, etc all electrically bonded	Electronic engine and gear shift controls
Forward and aft engine room bulkheads and engine room headlining to be integrally bonded including insulation with acoustafoam layers	Fresh water supply point in engine room
High volume air intakes	Dripless self-aligning shaft seals
Engine room extractor fan with electronic time delay	

POWER AND DRIVE SYSTEMS

4 x heavy duty batteries for engine starting

4 x heavy duty auxiliary batteries

Battery link facility with remote control at helm position

Both battery banks are charged using a voltage sensitive relay that parallels both battery banks when a charging source is present

60-amp 24v float battery charger

Remote battery isolator control switches at main switch panel position

Circuit breakers on all circuits

12v voltage dropper/converters for certain navigation and radio circuits

Princess Connect telemetry and maintenance system

ELECTRICAL SYSTEMS

European specification: 11kW @ 50Hz diesel generator, in own sound shields, water cooled and with specially silenced exhaust systems and with remote operation from main control panel

USA specification: 11.5kW @ 60Hz diesel generator in own sound shields, water cooled and with specially silenced exhaust systems and with remote operation from main control panel

Automatic fire extinguisher situated in engine room

Shore power/generator change over control operated from main control panel

Polarity check system

Earth leakage safety trip

Circuit breakers on all circuits

All cabins feature 220/240v power points and USB charging points

All bathrooms feature electric freshwater toilets and 240v shaver points

24 Volt:

Twin fuel tanks in NS8 marine grade alloy with interconnection system 726 gal / 872 US gal / 3300 l capacity

Fuel fillers to port and starboard decks

High capacity duplex fuel filters/water traps with integral changeover valves

Water warning sensors connected to warning lights at main helm position

Remote fuel isolation controls in cockpit locker

Twin fuel tanks in NS8 marine grade alloy with interconnection system 726 gal / 872 US gal / 3300 l capacity

Fuel fillers to port and starboard decks

High capacity duplex fuel filters/water traps with integral changeover valves

Water warning sensors connected to warning lights at main helm position

Remote fuel isolation controls in cockpit locker

for main engines and generator

Fuel gauges displayed on MFDs at both helm consoles

for main engines and generator

Fuel gauges displayed on MFDs at both helm consoles

220/240 Volt:

Water tanks giving a water capacity (excl. calorifier) of 139 gal / 166 US gal / 630 l capacity plus 73 litres hot water calorifier

Water tanks giving a water capacity (excl. calorifier) of 139 gal / 166 US gal / 630 l capacity plus 73 litres hot water calorifier

Water heated by engines and 3kW immersion heater

Water heated by engines and 3kW immersion heater

Automatic water pump with filter

Automatic water pump with filter

Main circuit breaker at main switch panel

Main circuit breaker at main switch panel

Water level gauge

Water level gauge

Deck filler

Deck filler

Electric quiet flush toilet system linked to 69 gal / 83 US gal / 315 l black water tank, content gauge and manual overboard discharge, with macerator backup system as well as dockside discharge system

Electric quiet flush toilet system linked to 69 gal / 83 US gal / 315 l black water tank, content gauge and manual overboard discharge, with macerator backup system as well as dockside discharge system

FUEL SYSTEM

Automatic/manual override electric bilge pumps in engine room (2), lazarette (2) and forward accommodation (6 in total)

Electric bilge pumps have controls and warning lights at main helm with audible alarm at flybridge helm

High capacity manual bilge system with valve system and suction points in the same areas

WATER SYSTEM

Automatic engine room fire extinguisher system (with manual override) and warning system at main and flybridge helm positions providing automatic shutdown of engines, generators and ventilation fans

Automatic fire extinguisher system under main helm

Hand operated fire extinguishers (5) in owner's stateroom, forward and starboard guest cabin, galley and main helm position

Automatic fire extinguisher system under main helm

Additional extinguisher fitted when optional crew cabin is specified

Hand operated fire extinguishers (5) in owner's stateroom, forward and starboard guest cabin,

galley and main helm position Automatic engine room fire extinguisher system (with manual override) and warning system at main and flybridge helm positions providing automatic shutdown of engines, generators and ventilation fans

BILGE PUMPS

Ensign staff	Anchor winch back up handle
Fenders (6)	First Aid kit
Mooring warps (4)	Bed covers supplied to all cabins (except optional crew cabin)
Tool kit	Owner's manual and engine manual
Boat hook	Ship's document case

EXTINGUISHERS / FIRE CONTROL SYSTEMS

Teak-laid transom platform, transom steps, cockpit deck, flybridge stairway and steps to side deck	Teak-laid transom platform, transom steps, cockpit deck, flybridge stairway and steps to side deck
Timber-laid flooring (V-groove planked) to galley	Timber-laid flooring (V-groove planked) to galley
Furniture in Rovere oak satin finish as standard (Silver oak satin finish, Ash satin finish or Walnut in satin or gloss finish available as an option)	Furniture in Rovere oak satin finish as standard (Silver oak satin finish, Ash satin finish or Walnut in satin or gloss finish available as an option)
Solid Surface floors in all bathroom suites in guest accommodation	Solid Surface floors in all bathroom suites in guest accommodation
Solid Surface wash basin vanity tops in all bathroom suites in guest accommodation	Solid Surface wash basin vanity tops in all bathroom suites in guest accommodation
Galley counter top in Solid Surface	Galley counter top in Solid Surface
Exterior upholstery in white vinyl as standard, with optional upgrade to Comfort Exterior available	Exterior upholstery in white vinyl as standard, with optional upgrade to Comfort Exterior available
Choice of high-quality carpets and upholstery fabrics from extensive range	Choice of high-quality carpets and upholstery fabrics from extensive range
Manual blinds to all windows and portholes (except crew porthole)	Manual blinds to all windows and portholes (except crew porthole)

Optional crew cabin to have furniture in specified boat timber with fitted carpet. Crew bathrooms have Solid Surface vanity tops and GRP floors with tracking

Optional crew cabin to have furniture in specified boat timber with fitted carpet. Crew bathrooms have Solid Surface vanity tops and GRP floors with tracking

OTHER STANDARD EQUIPMENT

FINISHES

PRINCESS F58

Price on application

+33 6 40 61 88 46 

m.st.pierre@princessyachtsmonaco.com

Follow Princess Yachts Monaco

