

PRINCESS S62 (2024)

2 430 000 €



SOLD

HIGHLIGHTS

- / 2024 BUILT
- / 3 CABINS
- / GYROSTABILIZER INSTALLED
- / JOYSTICK CONTROL
- / THIRD CONTROL STATION
- / HYDRAULIC PASSARELLE AND AFT PLATFORM
- / ALL BIMINIS
- / UPGRADED 17.5 ONAN GENERATOR
- / AV/TV UPGRADES
- / EXTRA AFT CABIN FOR CREW/GUEST
- / AIRCONDITIONING

SPECIFICATIONS

Location	Monaco, Monaco	Fuel capacity	603 l
Year	2024	Water capacity	3250 l
Length	19.17 m	Engines	MAN V8-1200
Beam	4.87 m	Max power	2 x 1200 hp
Draft	1.46 m	Engine hours	20 m/h

Displacement	28.87 tonnes	Price	2 430 000 € (ex VAT)
--------------	--------------	-------	----------------------

The yacht is on the commission of Princess Yacht Monaco. The Company is not responsible for the accuracy of the information provided by the Yacht owner (images, specification, parameters, engine performance, legal, etc). The operating time of the engines is indicated at the time of preparation of the information and may change during further operation. The need for an inspection remains at the discretion of the Buyer. Exact parameters and characteristics can be specified in the contract of sale. Additional information is available upon request.



The Princess S62 is a high-performance yacht, perfect for family adventures. With a confident presence on water, she can reach an impressive top speed of 38 knots.

This yacht features an open galley on the main deck, a spacious salon, and the option to seamlessly connect these areas with the cockpit's dining space, creating one large, open area. The sportbridge includes a bar and a generous dining area, perfect for entertaining. Below deck, six guests can be accommodated in three staterooms, with an additional aft cabin available for either crew or an extra guest. Built in 2024, this yacht is in like-new condition and would make the ideal purchase for the season.

Please contact us for more information.

”







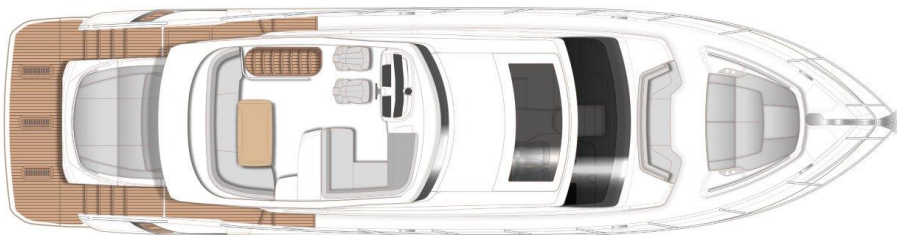








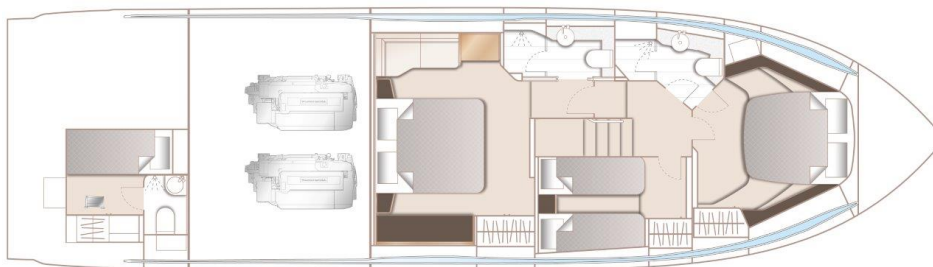
LAYOUTS



SPORTBRIDGE



MAIN DECK



LOWER DECK

EQUIPMENT

Teak laid side decks, foredeck and coachroof walkthrough;

Teak laid sportbridge deck;

Teak coffee table (with deck mounted fixing point) for foredeck;

Electric stern rope handling winches (2);

Electro-hydraulic telescopic passerelle (3.5m) with automatic hand rails;

Electrically operated sun awning to aft end of cockpit (grey fabric);

Stainless steel anchor in place of standard (32Kg);

Additional 20m of 10mm anchor chain to give a total of 60 meters;

ONAN 17.5 kW/50Hz generator in place of standard;

AGM 90Ah batteries in place of standard (for start, domestic and generator batteries);

Dishwasher (drawer type) fitted in galley;

Electric griddle/BBQ fitted to sportbridge wetbar (Kenyon);

Fit heated towel rail in Master cabin bathroom ;

Combination washer/dryer fitted in Master Stateroom lobby below companionway stairs;

Stern docking lights;

Exterior lighting upgrade package Includes : Additional deck level lights (11) to illuminate side deck and foredeck area and deck level spot lights (2) on garage door to illuminate bathing platform deck);

PREMIUM AUDIO SYSTEM Incorporates:

Remote control keypad (RMK-10) for multifunction display fitted at lower helm;

Raymarine AIS Class B transponder interfaced with chartplotters;

Airconditioning/heating reverse cycle (82,000 BTU) suitable for temperatures to 40°C (tropical) With controls in all cabins and outlets in all areas (including bathrooms);

Aft cabin air conditioning Condensing unit 6,000BTU supplying 6,000BTU unit (with SMX control) and separate outlet in toilet;;

Windscreen demist system using warm air heater powered from calorifier;

Electric discharge

Aft cabin toilet to be connected into holding tank system;

Run all sink / shower outlets into standard grey water tank with discharge into holding tank;

Foredeck sunbeds with contrast styling to headrest and flat stitched pleat to top of base cushions in Comfort Exterior III Met with Met, Vogue or Hitch contrast;

Fit reticulated foam to foredeck sunbed cushions in place of standard;

Fit reticulated foam to all standard exterior cockpit, foredeck & sportbridge seating & aft sunpad in place of standard

Bimini Top – Grey canvas;

Additional charge for bimini to have LED overhead dimmable lighting(switched from console);

Foredeck sun awning with carbon fibre poles – Grey

Princess China (5 piece consisting of plate, side

Raymarine Quantum Q24D Doppler 18' radar
(only if chartplotter is specified);

Second Raymarine Axiom XL16 (15.6') colour
multifunction display at lower helm;

plate, bowl, cup & saucer) – 6 place settings;

David Mellor 'Paris' cutlery (7 pieces) – 6 place
settings;

Princess glasses (6 wine, 6 tumbler);

Fender socks with Princess logo – Grey (x6);

Watermaker

PRINCESS S62 (2024)

2 430 000 £ (ex VAT)



+33 6 40 61 88 46 

m.st.pierre@princessyachtsmonaco.com

Follow Princess Yachts Monaco

