

PRINCESS S62

Price on application



SPECIFICATIONS

Location	United Kingdom, Shipyard
Length	19.17 m
Beam	4.87 m
Draft	1.46 m
Displacement	28.86 tonnes
Fuel capacity	3250 l
Water capacity	603 l

Cabins	3+1
Berths	6+2
Engines	Twin MAN V8-1200
Max power	2 x 1200 hp
Max speed	38 +
Price	Price on application

EQUIPMENT

DECK FITTINGS

Teak-laid transom platform, cockpit deck, sportbridge stairs and steps to side decks
Reversible electric anchor winch with foredeck and helm position controls
Self-stowing 32kg/77lbs Delta anchor with 40m of chain
Storage lockers for rope, fenders and foredeck sunbed cushions
Foredeck seating and sunbathing area
Stainless steel cleats, fairleads and handrails
LED deck level lighting
Freshwater deck/anchor wash

COCKPIT

U-shaped seating with teak folding table
Sunbed aft with garage with electro-hydraulic door and tender launch system with electric winch below (3.3m tender)
Twin transom gates leading to bathing platform with electro-hydraulic raise/lower mechanism, foldaway swimming ladder and hot and cold shower
Audio system with radio and streaming capability connected to waterproof speakers
Lockable gas strut assisted hatch to engine room, lazarette and optional crew cabin
Liferaft storage
Cockpit cover

SPORTBRIDGE

Helm position with repeat navigation equipment including radar/chartplotter and engine instrumentation
Twin adjustable helm seats
L-shaped seating area with folding teak table
L-shaped seating to starboard (converts to sunpad)
Wetbar with sink, top loading coolbox, storage and optional electric barbecue
Audio system with radio and streaming capability connected to waterproof speakers

LOWER HELM POSITION

Twin adjustable helm seats
Electric opening windows at helm position and port side
Full engine instrumentation including fuel gauges, exhaust temperature, fuel contamination alarms and rudder position indicator

Navigation system including colour radar, GPS and chartplotter, VHF/RT, speed and distance log, echo sounder with alarm, autopilot and high speed magnetic compass
Controls for bow thruster, windscreen wipers, bilge pump and trim tabs (with indicators)
24v and 240v control panel
Red night lighting
Toughened glass screen (clear for night vision)

DECK SALOON

Stainless steel framed sliding doors to aft cockpit with integrated opening window aft of galley
U-shaped sofa with coffee table
Entertainment centre incorporating 49" UHD LED TV on electric raise/lower mechanism and DVD/radio/ MP3 system with surround sound system
Sideboard unit with bottle and glass storage and refrigerator
L-shaped dining area with folding table
Skylights with reflecto-glass and sliding blinds (option of powered opening roof)

GALLEY

4-zone ceramic hob
Combination microwave/convection oven with grill
Stainless steel sink with mixer tap
Full height refrigerator/freezer
Storage lockers, cupboards and drawers

ACCOMMODATION

All cabins feature opening portholes
All cabins feature 220/240v power points
All mattresses pocket sprung (excluding optional crew)
All bathrooms feature full shower stalls, electric freshwater toilets, extractor fan and 240v shaver points

OWNER'S STATEROOM

Large double bed with drawers below
Wardrobes with hanging and drawer storage
Dressing table
Sofa
40" UHD LED TV, DVD, radio/MP3
En suite bathroom

FORWARD GUEST CABIN

Large double bed with drawers below
Wardrobe with shelves
Dressing table
Deck hatch
Storage lockers
En suite bathroom

STARBOARD GUEST CABIN

Two single beds with drawers below (with the option of powered conversion to double)
Wardrobe with shelves
Storage lockers

CREW CABIN (OPTIONAL)

Single bed with storage below
Wardrobe with shelf
Storage lockers
Bathroom with shower, electric freshwater toilet and washbasin

INTERIOR FINISH

Furniture in Rovere Oak or Alba Oak with a satin finish. Walnut or Silver Oak available as an option
Solid surface worktops and floors in all guest bathrooms
Solid surface worktops in galley
Choice of high quality carpet and upholstery fabric from extensive range
Curtains, blinds or sunscreens to all windows and portholes
Timber-laid galley and dining area floors
Optional crew cabin fitted with non slip safety flooring

POWER AND DRIVE SYSTEMS

5-bladed propellers in nickel aluminium bronze
Bow thruster (130kgf/287lbf)
Power-assisted electro-hydraulic steering system with hydraulic back-up
Electronic engine and gear shift controls
Dripless shaft seals
Engine room extractor fan with electronic time delay

ELECTRICAL SYSTEMS

24 Volt:

4 x heavy duty batteries for engine starting
4 x heavy duty auxilliary batteries

and may change during further operation. The need for an inspection remains at the contract of sale. Additional information is available from the manager on request.

60 amp battery charger charges both banks of batteries via an automatic switch charging system
--

Remote battery master switches with control switch at main panel
LED lighting throughout

220/240 Volt:

11kW diesel generator with own starting battery and specially silenced exhaust
50-amp shore support inlet

Earth leakage safety trip, polarity check system, circuit breakers on all circuits
Power points in all areas

FUEL SYSTEM

Twin fuel tanks (in NS8 marine grade alloy) with interconnection system giving 715 gal/ 858 US gal/3,250l capacity
Fuel fillers on port and starboard side decks
High capacity duplex fuel filters/water traps with audible and visible fuel contamination warning system
Remote fuel cocks in cockpit locker

WATER SYSTEM

116 gal/159 US gal/530l plus 16 gal/19 US gal/73l hot water calorifier and heated by engines and 240v immersion heater
Water level gauge
Deck filler
Electric freshwater WC system with 55 gal/ 66 US gal/250l holding tank

FIRE EXTINGUISHERS

Automatic/manual override fire extinguishers in engine room with warning system at both helm positions
Hand-operated fire extinguishers in all cabins, galley and lower helm (5)

BILGE PUMPS

Automatic electric bilge pumps (6)
High-capacity manual bilge pump with valve system and suction points in same areas

OTHER ITEMS SUPPLIED AS STANDARD

Ensign staff
Fenders (6) and wraps (4)
First aid kit
Set of manuals
Quilted bedspreads supplied to all cabins (except optional crew)

ENGINES

Twin Volvo D13-1000 (2 x 1000 mhp) Twin MAN V8-1200 (2 x 1200 mhp)

NOTES

* Displacements are calculated with 50% fuel and water with liferaft but with no optional equipment fitted or other gear. † Maximum speeds will vary depending on cleanliness of hull, condition of sterngear, loading of craft, water and air temperatures, sea conditions and other factors. Speed estimates

are therefore given in good faith but without warranty or liability on the part of Princess Yachts Limited. Craft illustrated in this brochure may be fitted with certain optional equipment. Specifications may be changed at any time without notice or liability.

EXTERIOR

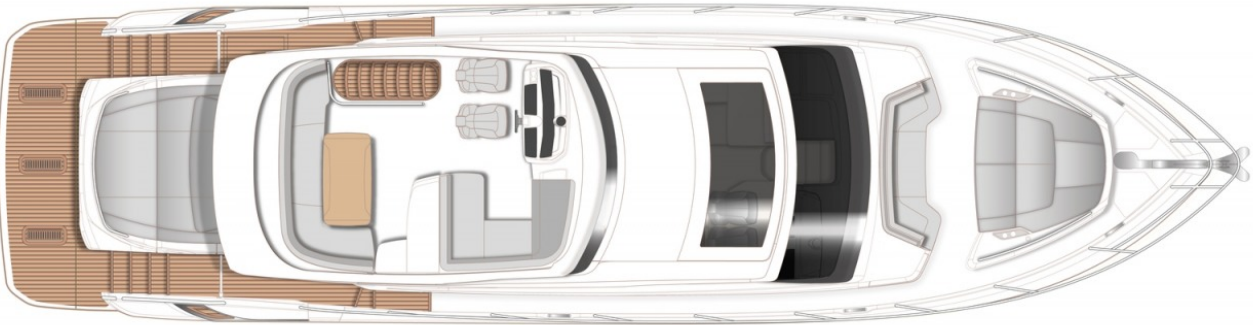


Yachts on the commission of Princess Yacht Monaco. The Company is not responsible for the accuracy of the information provided by the Shipowner (images used, yacht specifications, parameters, engine performance, legal design issues). The operating time of the engines is indicated at the time of preparation of the information and may change during further operation. The need for an inspection remains at the discretion of the Buyer. Exact parameters and characteristics can be specified in the contract of sale. Additional information is available from the manager on request.

INTERIOR



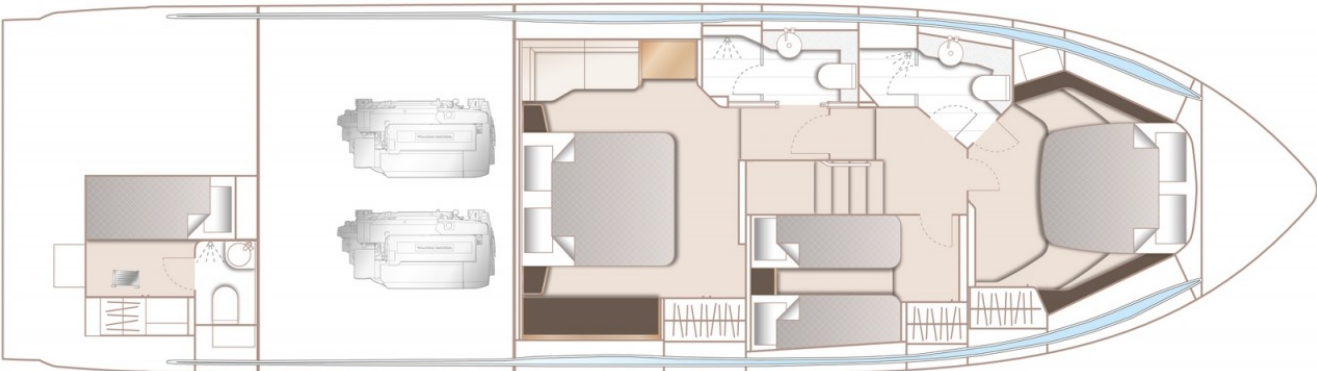
LAYOUTS



SPORTBRIDGE



MAIN DECK



LOWER DECK

Yachts on the commission of Princess Yacht Monaco. The Company is not responsible for the accuracy of the information provided by the Shipowner (images used, yacht specifications, parameters, engine performance, legal design issues). The operating time of the engines is indicated at the time of preparation of the information and may change during further operation. The need for an inspection remains at the discretion of the Buyer. Exact parameters and characteristics can be specified in the contract of sale. Additional information is available from the manager on request.