

PRINCESS S65 (2025) (2025)

PRICE ON APPLICATION



YACHT IN STOCK

SPECIFICATIONS

Year	2025	Cabins	4+1
Length	20.32 m	Berths	8+2
Beam	5.08 m	Engines	Twin MAN V8-1200
Draft	1.47 m	Max power	2 x 1200 hp
Fuel capacity	4100 l		
Water capacity	873 l		

DESCRIPTION



Introducing the all-new 2025 Princess S65 – available for sale with immediate delivery!
For more details, including the full list of options and the asking price, don't hesitate to get in touch with us today!

”









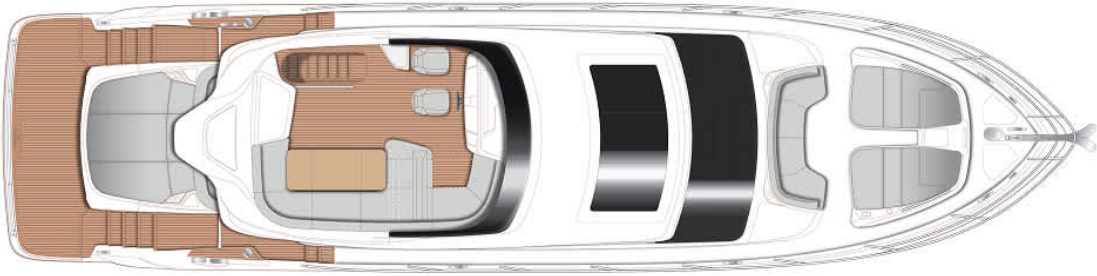




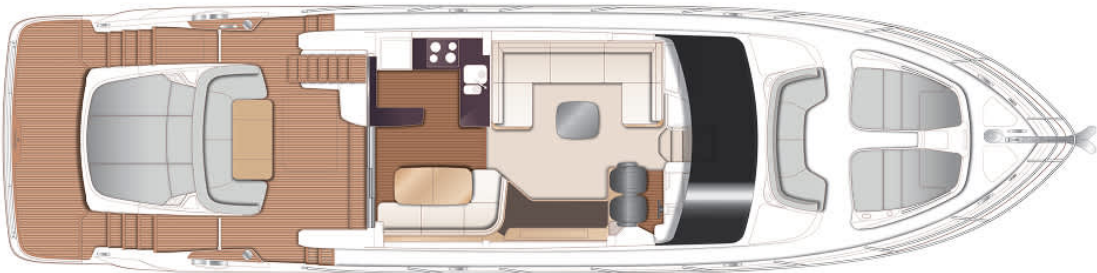




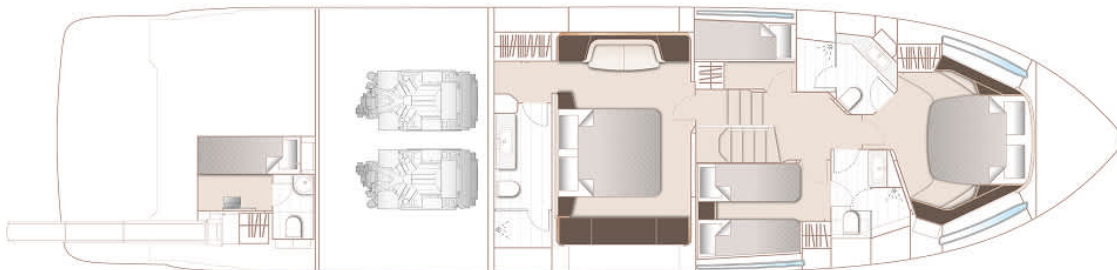
LAYOUTS



FLYBRIDGE




MAIN DECK



LOWER DECK

PRINCESS S65 (2025) (2025)

PRICE ON APPLICATION

+33 640 61 88 46 

m.st.pierre@princessyachtsmonaco.com

Follow Princess Yachts Monaco

