

PRINCESS S65

Price on application



SPECIFICATIONS

Location	Shipyard, United Kingdom
Length	20.32 m
Beam	5.08 m
Draft	1.47 m
Displacement	34 tonnes
Fuel capacity	4100 l

Water capacity	873 l
Cabins	4+1
Berths	8+2
Engines	Twin MAN V8-1200
Max power	2 x 1200 hp
Price	Price on application

EQUIPMENT

DECK FITTINGS

Teak-laid transom platform, cockpit deck, sportbridge, sportbridge stairs and steps to side decks

Reversible electric anchor winch with foredeck and helm position controls

Self-stowing 40kg/88lbs Delta anchor with 60m of chain

Storage lockers for rope, fenders and foredeck sunbed cushions

Foredeck seating and sunbathing area

Stainless steel cleats, fairleads and handrails

LED deck level lighting

Freshwater deck/anchor wash

COCKPIT

U-shaped seating with teak folding table

Sunbed aft with garage with electro-hydraulic door and tender launch system with electric winch below (3.3m tender)

Twin transom gates leading to bathing platform with electro-hydraulic raise/lower mechanism, foldaway swimming ladder and hot and cold shower

Lockable gas strut assisted hatch to engine room, lazarette and optional crew cabin

Liferaft storage

Cockpit cover

SPORTBRIDGE

Helm position with repeat navigation equipment including radar/chartplotter and engine instrumentation

Twin helm seats with fore and aft adjustment for helmsman

U-shaped seating area with folding teak table

L-shaped seating to port

Wetbar with sink, electric barbecue and storage

Radio/MP3 with waterproof speakers

Top loading coolbox at helm position

LOWER HELM POSITION

Twin helm seats with fore and aft adjustment for helmsman

Helmsman's door to side deck and electric opening window to port

Full engine instrumentation including fuel gauges, exhaust temperature, fuel contamination alarms and rudder position indicator

Navigation system including colour radar, GPS and chartplotter (2 displays), VHF/RT, speed and distance log, echo sounder with alarm, autopilot and high speed magnetic compass

Controls for bow thruster, windscreen wipers, bilge pump and trim tabs (with indicators)

24v and 240v control panel

Red night lighting

Toughened glass screen (clear for night vision)

DECK SALOON

Stainless steel framed sliding doors to aft cockpit with integrated opening window aft of galley

U-shaped sofa with coffee table

Entertainment centre incorporating 49" UHD LED TV on electric raise/lower mechanism and audio system with Blu-ray player connected to speakers

Sideboard unit with bottle and glass storage, refrigerator and icemaker

L-shaped dining area with folding table

Skylights with reflecto-glass and sliding blinds (option of powered opening roof)

GALLEY

4-zone ceramic hob

Combination microwave/convection oven with grill

Twin stainless steel sinks with mixer tap

Full height refrigerator/freezer

Dishwasher

Storage lockers, cupboards and drawers

ACCOMMODATION

All cabins feature opening portholes

All cabins feature 220/240v power points

All mattresses pocket sprung (excluding optional crew)

All bathrooms feature full shower stalls, electric freshwater toilets, extractor fan and 240v shaver points

OWNER'S STATEROOM

Large double bed with drawers below

Wardrobes with hanging and drawer storage

Dressing table

Sofa

40" UHD LED TV, audio system with Blu-ray player connected to speakers

En suite bathroom

FORWARD GUEST CABIN

Large double bed with drawers below
Wardrobe with shelves
Dressing table
Deck hatch
Storage lockers
En suite bathroom

STARBOARD GUEST CABIN

Two single beds with drawers below (with the option of powered conversion to double)
Wardrobe with shelves
Storage lockers
En suite bathroom with day access

PORT GUEST CABIN

Two single berths with drawers below
Wardrobe with shelves
Storage lockers

LOWER ACCOMMODATION LOBBY

Combination washer/dryer and storage area is fitted in the lobby area with the option of fitting separate washing machine and tumble dryer
--

CREW CABIN (OPTIONAL)

Single bed with storage below
Wardrobe with shelf
Bathroom with shower, electric freshwater toilet and washbasin

INTERIOR FINISH

Furniture in Rovere Oak or Alba Oak with a satin finish. Walnut or Silver Oak available as an option
Solid surface worktops and floors in all guest bathrooms
Solid surface worktops in galley
Choice of high quality carpet and upholstery fabric from extensive range
Curtains, blinds or sunscreens to all windows and portholes
Timber-laid galley and dining area floors
Optional crew cabin fitted with non slip safety flooring

POWER AND DRIVE SYSTEMS

5-bladed propellers in nickel aluminium bronze
Bow thruster (170kgf/375lbf)
Power-assisted electro-hydraulic steering system with hydraulic back-up

Electronic engine and gear shift controls
Dripless shaft seals
Engine room extractor fan with electronic time delay

ELECTRICAL SYSTEMS

24 Volt:

4 x heavy duty batteries for engine starting
4 x heavy duty auxilliary batteries
80 amp battery charger changes both banks of batteries via an automatic switch charging system
Remote battery master switches with control switch at main panel
LED lighting throughout

220/240 Volt:

13.5kW diesel generator with own starting battery and specially silenced exhaust
63-amp shore support inlet
Earth leakage safety trip, polarity check system, circuit breakers on all circuits
Power points in all areas

FUEL SYSTEM

Twin fuel tanks (in NS8 marine grade alloy) with interconnection system giving 902 gal/ 1,083 US gal/4,100l capacity
Fuel fillers on port and starboard side decks
High capacity duplex fuel filters/water traps with audible and visible fuel contamination warning system
Remote fuel cocks in cockpit locker

WATER SYSTEM

176 gal/211 US gal/800l plus 16 gal/19 US gal/73l hot water calorifier and heated by engines and 240v immersion heater
Water level gauge
Deck filler
Electric freshwater WC system with 60 gal/72 US gal/272l holding tank

FIRE EXTINGUISHERS

Automatic/manual override fire extinguishers in engine room with warning system at both helm positions
Hand-operated fire extinguishers in all cabins, galley, utility area and lower helm (6)

BILGE PUMPS

Automatic electric bilge pumps (6)
High-capacity manual bilge pump with valve system and suction points in same areas

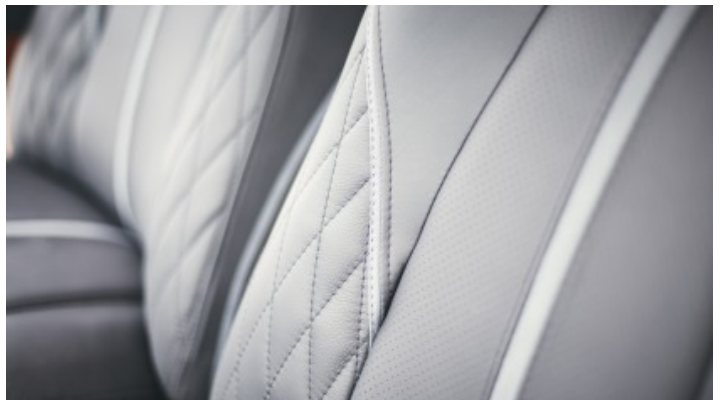
OTHER ITEMS SUPPLIED AS STANDARD	First aid kit
Set of cutlery, crockery and glasses (8)	Set of manuals
Ensign staff	Quilted bedspreads supplied to all cabins (except optional crew)
Fenders (6) and wraps (4)	

ENGINES

Twin MAN V8-1200 (2 x 1200 hp)	Twin MAN V12-1400 (2 x 1400 hp)
--------------------------------	---------------------------------

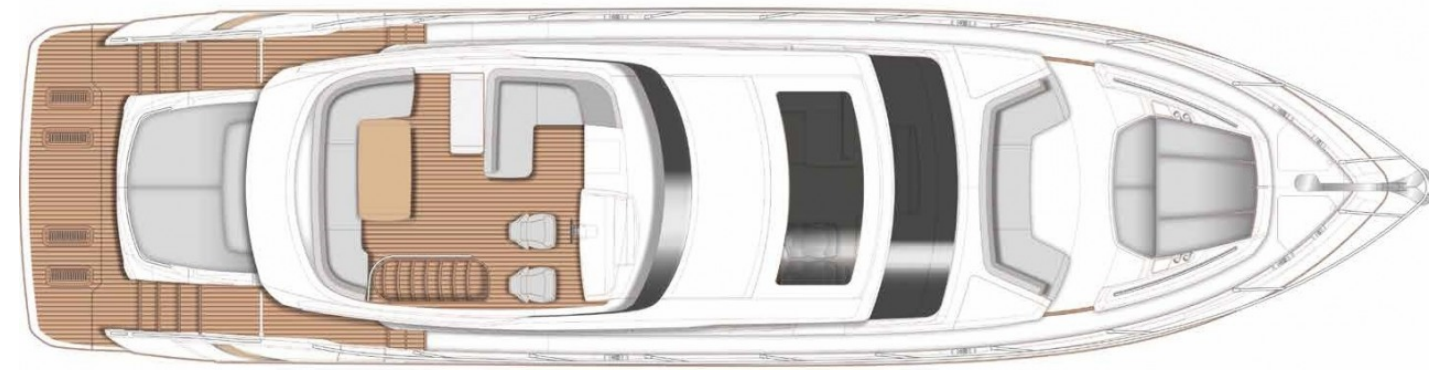
EXTERIOR



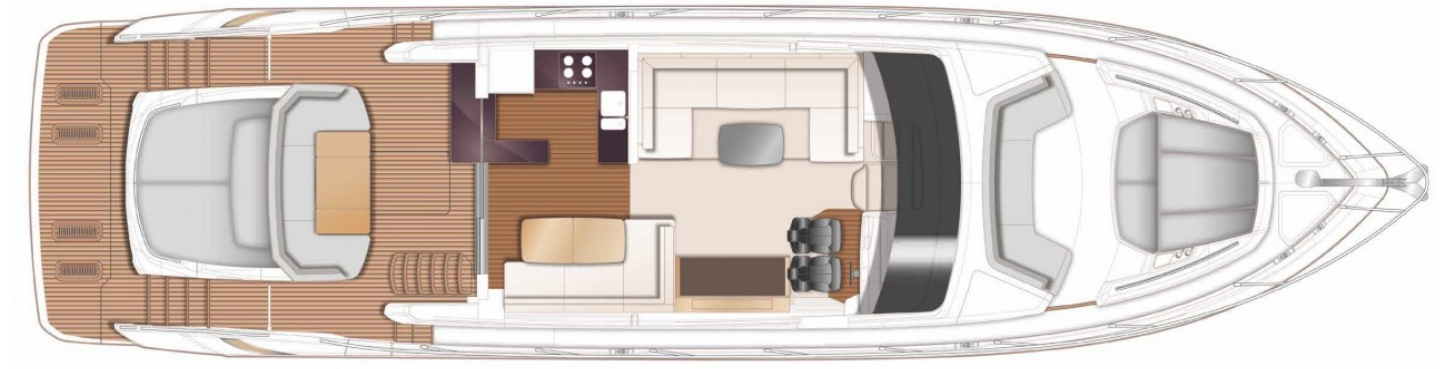




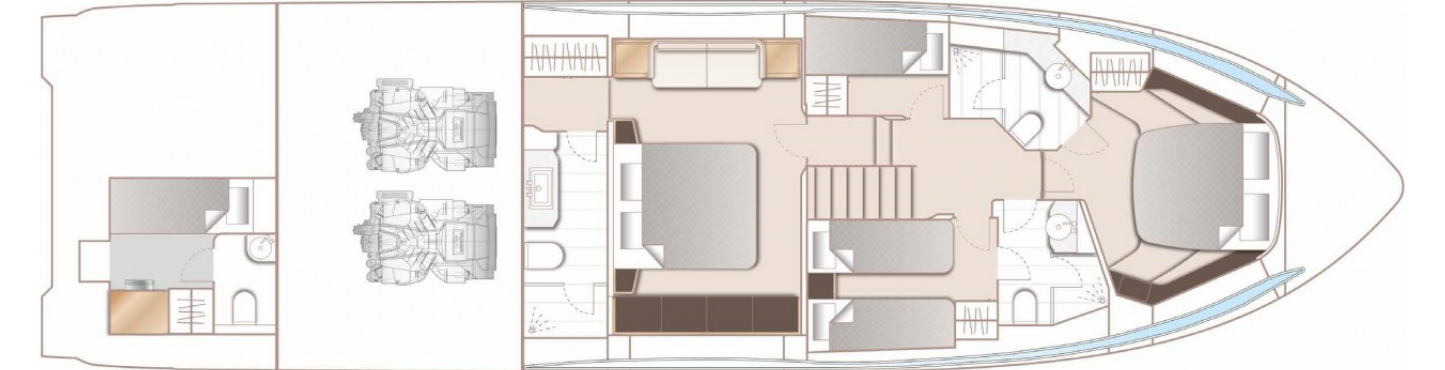
LAYOUTS



SPORTBRIDGE



MAIN DECK



LOWER DECK

Yachts on the commission of Princess Yacht Monaco. The Company is not responsible for the accuracy of the information provided by the Shipowner (images used, yacht specifications, parameters, engine performance, legal design issues). The operating time of the engines is indicated at the time of preparation of the information and may change during further operation. The need for an inspection remains at the discretion of the Buyer. Exact parameters and characteristics can be specified in the contract of sale. Additional information is available from the manager on request.