

## PRINCESS S74

Price on application



## SPECIFICATIONS

Location	Plymouth, United Kingdom	Water capacity	820 l
Length	23.09 m	Cabins	4
Beam	5.45 m	Berths	8
Draft	1.72 m	Engines	Contact seller
Displacement	49 tonnes	Price	Price on application
Fuel capacity	4.500 l		



The Princess S74 is the latest evolution of the S Class range, set to launch in 2027. Developed from the award-winning S72, the S74 combines dynamic performance with enhanced exterior deck layouts and a refined interior specification.

The exterior features full-length hull windows and updated hull graphics, emphasising the yacht's sporting profile. The cockpit offers reconfigurable seating arrangements, while the integrated sunpad is positioned above a tender garage capable of accommodating a 3.9 m tender, launched via an electro-hydraulic bathing platform. The foredeck provides dedicated sunbathing and seating areas, and the sportbridge is equipped with a twin helm station, dining seating, folding tables and a wet bar with barbecue.

The main deck is arranged around multiple lounge and dining configurations and includes a sideboard with bottle and glass storage, refrigeration, a 55-inch UHD LED television and Naim audio system. The helm station features dual-station instrumentation, adjustable twin seats and a starboard pantograph door. A centrally located galley

supports extended cruising and is fully equipped with a four-zone induction hob, combi oven, full-height fridge freezer, dishwasher and icemaker.

Accommodation is provided for up to eight guests in four cabins, including a full-beam Owner's Stateroom with private staircase, en-suite bathroom and panoramic hull windows. Additional accommodation includes a forward en-suite stateroom and two twin guest cabins. A separate crew cabin with two berths and en-suite facilities is also provided.

Combining advanced engineering, intelligent space utilisation and a comprehensive specification, the Princess S74 delivers a refined balance of performance, comfort and functionality within the S Class range.

”



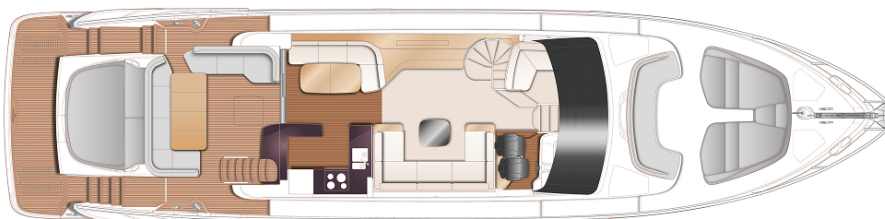






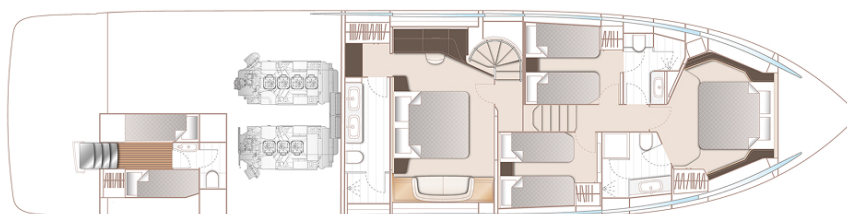
## LAYOUTS

---



### MAIN DECK

---



### LOWER DECK

---

PRINCESS S74

Price on application

+33 6 40 61 88 46 

[m.st.pierre@princessyachtsmonaco.com](mailto:m.st.pierre@princessyachtsmonaco.com)

---

Follow Princess Yachts Monaco

