

PRINCESS S78 (2021)

4 600 000 € (inc VAT)



BROKERAGE

HIGHLIGHTS

/ NEW CONDITION
/ MCA COMPLIANT
/ ONLY 190 ENGINE HOURS
/ SEAKEEPER INSTALLED
/ WATERMAKER
/ 2 GENERATORS

/ HYDRAULIC GANGWAY
/ ELECTRO-HYDRAULIC TRANSOM PLATFORM
/ TV/AV EQUIPPED
/ WIFI + 4G INTERNET
/ CCTV
/ WILLIAMS 435 TENDER

SPECIFICATIONS

Location	Italy
Year	2021
Length	24.66 m
Beam	5.76 m
Draft	1.77 m
Displacement	53.7 tonnes
Fuel capacity	6000 l
Water capacity	1350 l

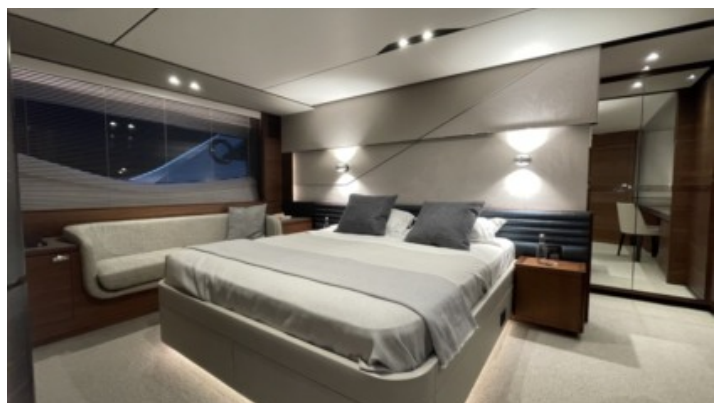
Cabins	4 + 1
Berths	8 + 2
Engines	2 Twin MAN V12
Max power	2 x 1900 hp hp
Max speed	37-39 †
Engine hours	190 m/h
Price	4 600 000 € (inc VAT)

EQUIPMENT

- Gyro stabilizer (Seakeeper 16)
- Joystick Control (XENTAL dual station) operating with both engines and thruster
- Craft Built to MCA (Small commercial Vessel Regulation cat. 2) + Safety equipment
- Interiors walnut wood satin
- Combination toilet/bidet in Master Stateroom
- Up/down electro hydraulic transom with 550kg fitted as standard with tender launch system fitted in the garage
- Side entry gates to aft port & starboard side decks in addition to standard gangway
- Electric sun awning to aft end of cockpit
- Electric sliding roof over forward saloon area
- Stainless steel anchor in place of standard (50Kg) + 140mt chain
- Third station controls in cockpit (engine, thruster and stop emergency engine controls)
- Ketal Zig Zag coffee table
- ONAN 27kW/50Hz generator fitted in place of standard
- Additional 22.5kW/50Hz generator
- Continental 220v/240 sockets
- Underwater transom lights (4 Lumishore SMX53 White)
- Underwater lighting to aft hull sides (4 Lumishore SMX53 White) (2 per side)
- Fresh water maker (190 litres/hour) complete with remote instrumentation
- Lava Brick BBQ in place of standard
- Heated towel rail in bathroom
- Icemaker fitted in sportbridge wetbar
- Underfloor heating in bathrooms
- Wine cooler fitted above standard washer/dryer in owner's lobby
- Icemaker fitted in sportbridge wetbar
- Sub zero drawer fridges fitted in galley
- 110 lt fridge in crew mess unit
- Combination Microwave/grill fitted in crew mess
- Optional table lamp in Master Stateroom positioned at forward end of port vanity unit
- Deck Saloon – 55" UHD LED TV on power lift Naim Uniti Atom audio system with Bluetooth, multi-zone streaming capability and dedicated app. Blu-ray UHD CD/DVD player. Paired with 2 Focal speakers and subwoofer
- Owners stateroom – 40" UHD LED TV, Naim Uniti Atom audio system with Bluetooth, multi-zone streaming capability and dedicated app. Blu-ray UHD CD/DVD player, Paired with 2 Focal speakers and subwoofer
- Sportbridge – Naim Uniti Atom audio system with Bluetooth, multi-zone streaming capability and dedicated app. Paired with 2 Bowers & Wilkins waterproof speakers (no HDMI connectivity)
- Cockpit seating area – Naim Uniti Atom audio system with Bluetooth, multi-zone streaming capability and dedicated app. Paired with 2 Bowers & Wilkins waterproof speakers (no HDMI connectivity)
- System includes onboard Ethernet network with 4G internet capability access to all areas. This improves connectivity via dedicated app
- Forward Guest cabin – 32" HD LED TV, Naim Uniti Atom audio system with Bluetooth, multi-zone streaming capability and dedicated app. Blu-ray CD/DVD player. Paired with Focal speakers (2) and subwoofer
- Starboard cabin – 28" HD LED TV, Naim Uniti Atom audio system with Bluetooth, multi-zone streaming capability and dedicated app. Blu-ray CD/DVD player. Paired with Focal speakers (2)
- Port cabin – 22" HD LED TV, Naim Uniti Atom audio system with Bluetooth, multi-zone streaming capability and dedicated app. Blu-ray CD/DVD player. Paired with Focal speakers (2)
- Crew cabin – 22" HD LED TV, Naim Uniti Atom audio system with Bluetooth, multi-zone streaming capability and dedicated app. Blu-ray CD/DVD player. Paired with Focal speakers (2)
- Foredeck seating walk-through area – Naim audio system with Bluetooth, multi-zone streaming capability and dedicated app. Paired with 2 Bowers & Wilkins waterproof speakers (no HDMI connectivity)
- Four Raymarine Axiom XL16 (15.6") colour multifunction displays (i.e. 2 at each helm position) in place of standard
- Raymarine Magnum HD colour radar, 12kW pedestal with 48" open array scanner in place of standard 4kW
- Raymarine remote control keypad (RMK-10) at upper and lower helms
- Raymarine 7" repeater display in crew cabin
- European version plotter
- Raymarine AIS 700 Class B transponder interfaced with chartplotter
- International VHF
- Raymarine night/day CCTV camera in engine room and one on aft point of cockpit overhang to allow viewing of platform – connected and viewed from both upper and lower Raymarine screens
- Airconditioning/heating reverse cycle (186,000BTU) suitable for temperatures to 40°C (tropical) is fitted as standard With controls in all cabins and outlets in all areas (including bathrooms)
- Mosquito screens for portlights
- Exterior covers – Grey canvas
- Bimini top – Grey canvas
- Additional charge for Bimini top to have dimmable LED overhead lighting (switched from console)
- Additional charge for Bimini to be electro-hydraulic powered
- White vinyl windscreen covers in place of standard black mesh
- Foredeck sun awning with carbon fibre poles (awning to match cockpit/sportbridge covers)
- 8 place setting of China, Cutlery & Glasses
- Compass adjuster to swing both compasses
- Tender: Williams 435SJ – includes launch & load into garage; upholstery grey to match mother vessel; deck white; helm white; hull white; tubes standard off white and neptune grey; Milan upholstery; Led deck lights; Bimini in grey; protective cover in grey;
- Fortress anchor (31KGS) for 80' yacht + Bag for FX125 for easy storage+ rope
- 12 USB sockets
- Sliding helm table (as per 30 M) at forward port helm seating area;
- Galley worktop to be in organic White quartz
- All bathroom worktops and floors to be Carrara White
- Wash and Go 300 System

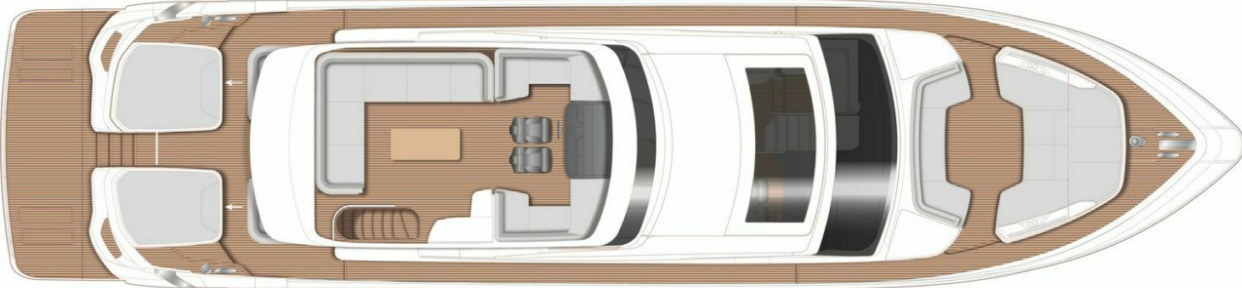
EXTERIOR







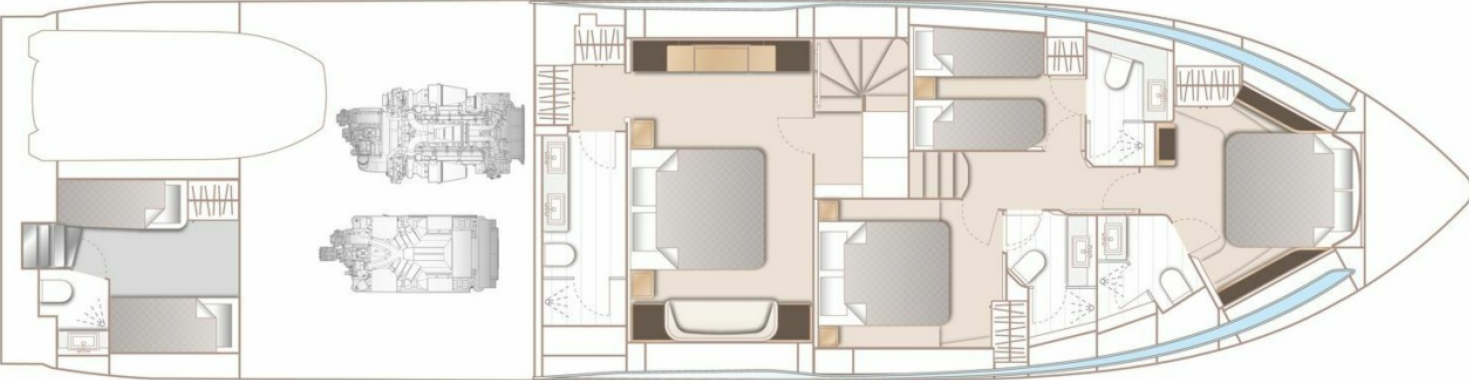
LAYOUTS



FLYBRIDGE



MAIN DECK



LOWER DECK
