

## PRINCESS S80 (2025)

PRICE ON APPLICATION



YACHT IN STOCK

### HIGHLIGHTS

/ AVAILABLE IN STOCK

### SPECIFICATIONS

Length	25.4 m	Cabins	4+1
Beam	6.07 m	Berths	8+2
Draft	1.77 m	Engines	Twin MAN V12
Fuel capacity	7000 l	Max power	2 x 2000 hp
Water capacity	1480 l	Max speed	33 kn

## DESCRIPTION

---



Introducing the all-new 2025 Princess S80 – available for sale with immediate delivery!  
For more details, including the full list of options and the asking price, don't hesitate to get in touch with us today!

”









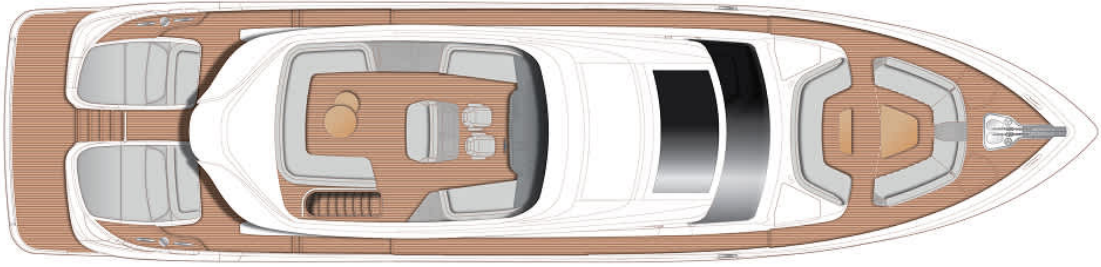






## LAYOUTS

---



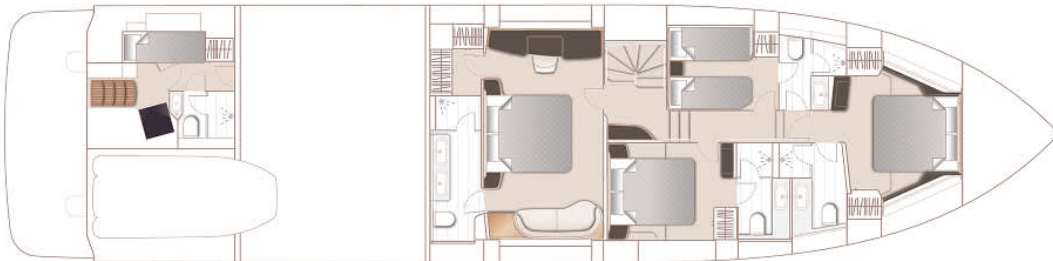
## FLYBRIDGE

---



## MAIN DECK

---




## LOWER DECK

---

PRINCESS S80 (2025)

PRICE ON APPLICATION

+33 640 61 88 46 

m.st.pierre@princessyachtsmonaco.com

---

Follow Princess Yachts Monaco

