

## PRINCESS V65

Price on application



### SPECIFICATIONS

Location	Plymouth, United Kingdom
Length	20.32 m
Beam	5.08 m
Draft	1.47 m
Displacement	36 tonnes
Fuel capacity	4100 l
Water capacity	873 l

Cabins	4+1
Berths	8+1
Engines	Twin MAN V12-1400 (2 x 1,400mhp)
Max power	2800 hp
Max speed	36-38 +
Price	Price on application

EQUIPMENT

DECK FITTINGS

Teak-laid transom platform, cockpit deck and steps to side decks
Reversible electric anchor winch with foredeck and helm position controls
Stemhead roller with automatic anchor launch and retrieve
Self-stowing 40kg/88lbs Delta anchor with 40m of chain
Storage lockers for fenders and ropes
Foredeck seating and sunbathing area
Stainless steel cleats, fairleads and handrails
LED deck level lighting
Freshwater deck/anchor wash

COCKPIT

U-shaped seating with teak folding table and folding directors chairs
Sunbed aft with garage with electro-hydraulic door and tender launch system with electric winch below (3.3m tender)
Twin transom gates leading to bathing platform with electro-hydraulic raise/lower mechanism, foldaway swimming ladder and hot and cold shower
Wetbar including electric barbecue and top loading coolbox
Waterproof speakers linked to deck saloon sound system
Lockable gas strut assisted hatches to engine room, lazarette and optional crew cabin
Liferaft storage locker
Cockpit cover

HELM POSITION

Twin helm seats with electric adjustment for helmsman
Helmsman's door to side deck and electric opening window to port
Full engine instrumentation including fuel gauges, exhaust temperature, fuel contamination alarms and rudder position indicator
Navigation system including colour radar, GPS and chartplotter (2 displays), VHF/RT, speed and distance log, echo sounder with alarm, autopilot and high speed magnetic compass
Controls for bow thruster, windscreen wipers, bilge pump and trim tabs (with indicators)
24v and 240v control panel
Red night lighting
Toughened glass screen (clear for night vision)

Deck Saloon parameters, engine performance, legal design issues). The operating to change during further operation. The need for an inspection remains at the discretion

Stainless steel framed sliding doors to aft cockpit with integrated opening window aft of galley

U-shaped sofa and coffee table

L-shaped dining area with folding table

Entertainment centre incorporating 49" UHD LED TV on electric raise/lower mechanism and DVD/radio/ MP3 system with surround sound system

Sideboard unit with bottle and glass storage, refrigerator and icemaker

Electric opening roof

GALLEY

4-zone ceramic hob

Combination microwave/convection oven with grill

Twin stainless steel sinks with mixer tap

Full height refrigerator/freezer

Dishwasher

Storage lockers, cupboards and drawers

ACCOMMODATION

All cabins and bathrooms feature opening portholes

All cabins feature 220/240v power points

All mattresses pocket sprung (optional excluding crew)

All bathrooms feature electric freshwater toilets, extractor fan and 240v shaver points

OWNER'S STATEROOM

Large double bed with drawers below

Wardrobes with hanging and drawer storage

Storage lockers and drawers

Dressing table

Sofa

40" UHD LED TV, DVD Bluray

En suite bathroom

FORWARD GUEST CABIN

Large double bed with drawers below

Wardrobe with shelves

Dressing table

Deck hatch

Storage lockers and drawers

En suite bathroom

STARBOARD GUEST CABIN

Two single beds with drawers below (with option of double bed conversion)

Wardrobe with shelves

Storage lockers and drawers

En suite bathroom with day access

PORT GUEST CABIN

Two single beds with drawers below

Wardrobe with shelf

Storage lockers and drawers

LOWER ACCOMMODATION LOBBY

Combination washer/dryer and storage area is fitted in the lobby area with the option of fitting separate washing machine and tumble dryer

CREW CABIN (OPTIONAL)

Single bed, wardrobe and storage lockers

Bathroom with shower, electric freshwater toilet and washbasin

INTERIOR FINISH

Furniture in Rovere Oak with satin or high gloss finish. Walnut or Alba Oak available as an option

Solid surface worktops and tiled floors in all guest bathrooms

Solid surface worktops in galley

Choice of high quality carpet and upholstery fabric from extensive range

Blinds or sunscreens to all windows and portholes

Timber-laid galley, saloon and helm floors

Optional crew cabin fitted with non slip safety flooring

POWER AND DRIVE SYSTEMS

5-bladed propellers in nickel aluminium bronze

Bow thruster (170kgf/375lbf)

Power-assisted electro-hydraulic steering system with hydraulic back-up

Electronic engine and gear shift controls

Dripless shaft seals

Engine room extractor fan with electronic time delay

ELECTRICAL SYSTEMS

24 Volt:

4 x heavy duty batteries for engine starting

4 x heavy duty auxilliary batteries  
of sale. Additional information is available from the manager on request.

80 amp battery charger charges both banks of batteries via an automatic switch charging system

Remote battery master switches with control switch at main panel

LED lighting throughout

220/240 Volt:

13.5kW diesel generator in own starting battery and specially silenced exhaust

Earth leakage safety trip, polarity check system, circuit breakers on all circuits

Power points in all areas

FUEL SYSTEM

Twin fuel tanks (in NS8 marine grade alloy) with interconnection system giving 902 gal/1,083 US gal/4,100l capacity

Fuel fillers on port and starboard side decks

High capacity duplex fuel filters/water traps with audible and visual fuel contamination warning system

Remote fuel cocks in cockpit locker

WATER SYSTEM

176 gal/211 US gal/800l plus 16 gal/19 US gal/73l hot water calorifier and heated by engines and 240v immersion heater

Water level gauge

Deck filler

Electric freshwater WC system with 60 gal/72 US gal/272l holding tank

FIRE EXTINGUISHERS

Automatic/manual override fire extinguishers in engine room with warning system at helm position

Hand-operated fire extinguishers (6) in all cabins, galley and helm position

BILGE PUMPS

Automatic electric bilge pumps (6)

High-capacity manual bilge pumps with valve system and suction points in same areas

OTHER ITEMS SUPPLIED AS STANDARD

Set of cutlery, crockery and glasses (8)

Ensign staff

Fenders (6) and warps (4)

First aid kit

Tool kit

For the accuracy of the information provided by the shipowner (images used), quantity of the engines is indicated at the time of preparation of the information and may vary at the Buyer's request. Exact parameters and characteristics can be specified in the contract



EXTERIOR



Yachts on the commission of Princess Yacht Monaco. The Company is not responsible for the accuracy of the information provided by the Shipowner (images used, yacht specifications, parameters, engine performance, legal design issues). The operating time of the engines is indicated at the time of preparation of the information and may change during further operation. The need for an inspection remains at the discretion of the Buyer. Exact parameters and characteristics can be specified in the contract of sale. Additional information is available from the manager on request.





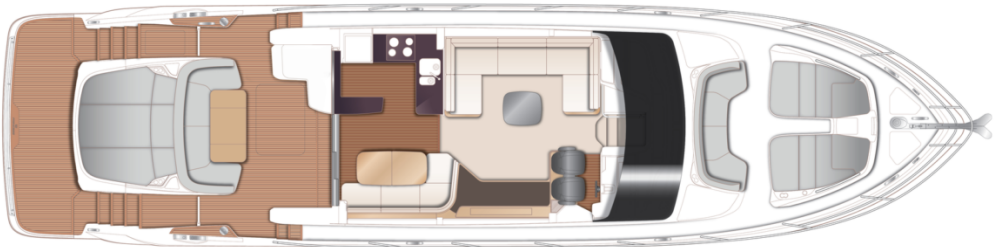
LAYOUTS

---



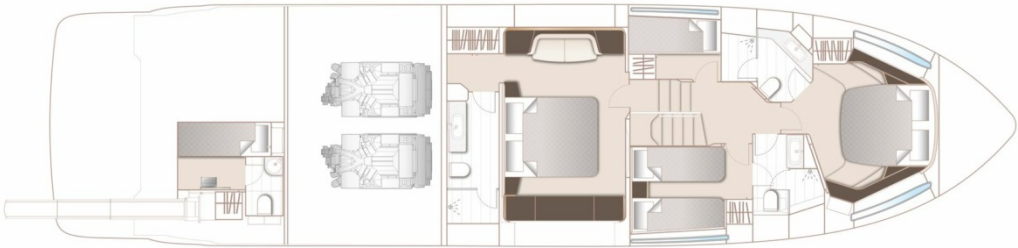
PROFILE

---



MAIN DECK

---



LOWER DECK

---