

PRINCESS X95 (018)

Price on application



SPECIFICATIONS

Location	Monaco, Monaco	Water capacity	1805 l
Year	2021	Cabins	4+2
Length	29.11 m	Berths	8+3
Beam	6.77 m	Engines	Twin MAN V12-1900
Draft	2.01 m	Max power	2 x 1900 hp
Displacement	104 tonnes	Max speed	24-26
Fuel capacity	13400 l	Price	Price on application



Characterised by beautifully sculpted surfaces and long flowing lines, the X95 defines a striking design language for this new Class. Both her flybridge and main deck cover almost the full length of the yacht, delivering expansive spaces with flexibility that enables you to define each journey around your guests' preferences. With a fuel capacity of 13,400 litres, the X95 has the range for far-reaching, adventurous voyages. Experience space akin to a megayacht as you enter her main deck saloon and witness a line of sight right through to the forward window. Ascend the internal staircase to the upper deck and another unique experience awaits: a fully enclosed and climatecontrolled Sky Lounge. Taking pride of place on her lower deck is the full beam Master Stateroom with en suite, complemented by her Forward Stateroom with walk-in wardrobe and en suite bathroom.

”











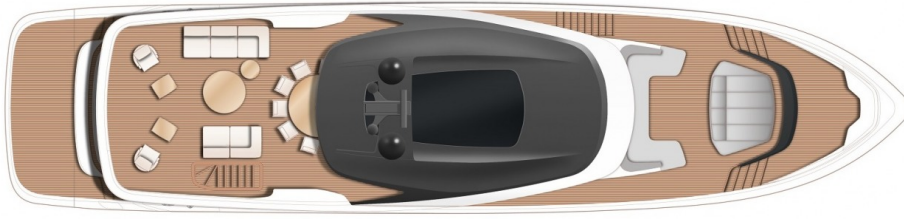




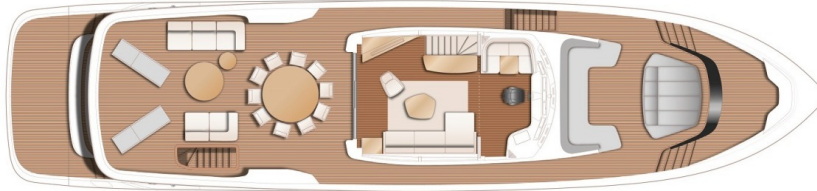




LAYOUTS



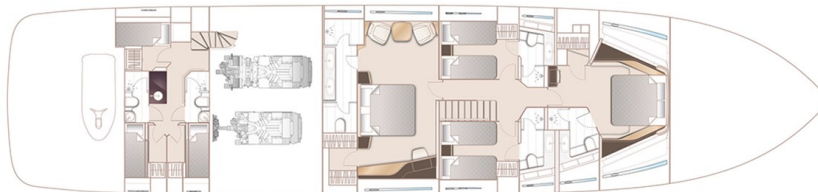
HARDTOP



SUNDECK



MAIN DECK



LOWER DECK

EQUIPMENT

- Silver Oak wood gloss finish (standard open galley and forward dining floors are V groove planked Walnut as standard.
- Skylounge (with inlaid rug) and wheelhouse floors are in V groove Newport oak as standard)
- Main deck Saloon and forward lounge/optional bar area floors to be in V groove planked wood with inlaid rug in aft saloon area (wood type same as standard open galley and dining area)
- Sky lounge floors to be in V groove planked wood with no inlaid rug in the area (wood type same as standard open galley and dining area)
- Optional five (5) stateroom layout with forward main deck master stateroom, enclosed galley and dining area to seat 10 forward of saloon area (with extending table) in place of standard.
- Dining table seats 8 when not extended. Storage for 2 additional standard Frag chairs is provided forward of the day head. There are also an additional 2 chairs supplied for the Flybridge dining table (to make 10). Carpeted floors in this area.
- Transom garage (for wetbike stowage) is standard. Crew accommodation in two cabins for 3-4 with 2 crew bathroom and mess area.
- Layout of the crew quarters with two cabins at STBD and a dining area with berth at the PORT
- Galley worktop: Clamshell quartz
- Bathroom worktops
- Dayhead - Grigio Callemandia marble
- Main deck Master cabin: floors - Grigio Callemandia Marble
- Splascreen and aft bulkhead in the shower - Mystery White marble
- Low deck Master cabin: Floors - Grigio Callemandia marble
- Aft bulkhead in the shower - Grigio Callemandia marble
- Splascreen - white sateen glass (all low deck bathrooms are the same)
- FWD and Port bathrooms: Floors - Grigio Callemandia marble
- Standard hydraulic system (consisting of separate engine driven hydraulic pumps on each engine with cross connections allowing any system to be supplied with hydraulic power from either engine) combining the bow thruster (with proportional speed control) and windlass system
- Electro hydraulic transformer platform with 1000Kg SWL fitted
- The craft is fitted with a Raymarine 90 Dual Station VHF international
- Continental 220v/240v sockets
- European version plotter
- Grey exterior covers
- Stainless steel keyway plates for later fitting of tender on bathing platform
- Sleipner Hydraulic system (consisting of separate engine driven hydraulic pumps on each engine with cross connections allowing any system to be supplied with hydraulic power from either engine) and incorporating SPS93/VF1950 vector fin stabiliser system. When underway fins are driven by engine powered hydraulic pumps and at zero speed by a generator powered electric motor.
- Hydraulic Stern thruster (variable speed 480 KgF)
- Main deck saloon - to fit the semicircular sofa from the Princess on the port side at the entrance in place of the rectangular one.
- In Skylounge supply and fit rounded L shaped sofa similar to standard sofa supplied in lower deck master stateroom in place of standard.
- Replace the 5 cabin option 10 seat dining table in the Saloon with a Y85 style 8 seat with diameter 1,7m dining table which also extends when needed
- Custom sideboard unit on starboard side in the Saloon (stone top to be Mystery White)
- 8 seats dining table at the upper deck in place of the standard
- Main deck Master Stateroom - optional chaise longue with integrated storage in place of armchairs and table to port side
- Opening the door to the master stateroom on the main deck to the right forward
- Port cabin to have double berth conversion with powered sliding mechanism on inboard berth
- Surcharge for changing the direction of opening of the entrance door of the FWD cabin of the main deck
- Surcharge for upholstery on the dresser for storing shoes in the wardrobe at the Master cabin made of Splendido Splendente T17017 / 021 Lago Lan
- Replace veneer in all bathrooms to be in Silver Oak Satin
- Additional charge for the non standard fabrics used in the interior of the Yacht
- Wall mounted hot/cold douche shower in the guest toilets
- Glass partitions in the bathrooms Master cabin on the main deck and Master cabin on the lower deck separating the toilet bowl are made of frosted glass (2 partitions), the rest of the partitions are made of transparent glass.
- Side entry gates to aft port & starboard side decks in addition to standard passerelle
- Mooring package with leather fender saddles (x8 accommodates one side of the hull)
- Cockpit bar unit (including drawer refrigerator, icemaker, sink and storage cupboard)
- Cockpit teak table have central removable section

8mm teak decking upgrade throughout

- Twin stainless-steel kedge anchors with 100m of 14mm galvanised chain in place of standard
- Flybridge starboard unit included in outboard sideboard to be fitted with top loading cool box and icemaker
- Wing station controls on starboard side of flybridge coaming (engine controls, thruster controls and engine emergency stops)
- Electric aft awning fitted to upper deck (Anthracite Grey fabric)
- Kettal Zig Zag coffee table (with tray and deck mounted fixing point) for foredeck - (Tray top: 678 bone, Rope Frame: 420 Light Grey rope)
- Plug in carbon pole transom shower and deck socket to bathing platform
- Flybridge port side GRP storage box (fits between skylounge and outboard rails)
- An additional 2 x 50 metres of 14mm anchor chain to make 150 metres on each side (galvanised)
- Upgrade to two ONAN 50kW/50Hz generators to be fitted in place of standard (recommended with Gulf spec aircon)
- Underwater transom lights (4 Lumishore THX 803 full colour, interfaced with Radar/Chartplotter MFD's)
- Underwater lighting to aft hull sides (8 Lumishore THX 803 full colour, interfaced with Radar/Chartplotter MFD's - 4 per side)
- Freshwater maker (190l/hr) complete with remote instrumentation and service/spares kit
- Underfloor heating in bathrooms
- Heated towel rail to bathroom
- In main deck master, lower deck master and forward VIP ensure that wiring and switch is fitted for flexible reading lights
- In Saloon and Sky lounge - Supply and fit wiring and switching for later fitting of lamps in location of where optional lamps would be fitted
- Exterior lighting upgrade package

Main deck:

- Overhead (9x, in addition to 8x fitted as standard)
- Low level (5x, in addition to 4x fitted as standard)
- Fibre optic lighting (16x) in Cockpit

Sky deck:

- Overhead (4x, in addition to 6x fitted as standard)
- Low level (7x, in addition to 10x fitted as standard)
- Bow lighting (2x)
- Interior lighting upgrade package includes 16 additional fibre optic lights throughout the aft and forward saloon areas
- Exterior decorative lighting upgrade: Decorative chargeable LED lanterns (1) dimmable and portable
- Saloon lamp located on starboard side aft unit - Balada & Co Small Fenix Classic with diffuser and shade Fenix NTM with Shiny matt Macchiato 104 fabric
- Skylounge table lamp located on starboard side aft side table - Contardi Rettangola large with bronze base and cream shade

- PREMIUM AUDIO/VIDEO UPGRADE (Five cabins configuration)

- Dummy KVH dome (89cm)
- KVH V3-IP Vsat System in 89 cm dome with handset at helm position (linked to internal telephone system if specified)
- Marine router acting as a single control point for Satphone (when selected), 3G/4G services and marine WiFi networks. Easily accessed and controlled via a web browser on any connected device, the router allows the owner and/crew to control and restrict internet connections and access to the Satphone. WiFi coverage is provided throughout the vessel including crew and external guest areas
- Raymarine Magnum HD colour radar, 12kW pedestal with 72" open array scanner in place of standard 4kW 48"
- Raymarine AIS Class B transponder interfaced with chartplotter and with 8ft (2.4m) aerial
- Run copex for later fitting of the night view camera
- Gulf spec - Air Conditioning/heating reverse cycle (420,000 BTU fan capacity with 288,000 BTU chiller capacity) suitable for temperatures to 50°C (Gulf) incorporating a windscreen demist facility. (Upgrade to two ONAN 50kW/50 Hz generators recommended)
- Mosquito screens for portlights
- Reticulated foam to all standard exterior cockpit and foredeck fixed furniture (loose furniture items on the sundeck and loose cockpit chairs, if selected, are not included)
- Foredeck sun awning with 4 carbon fibre poles (grey mesh) and deck mounting sockets
- Flybridge sun awning (aft section) in anthracite grey mesh with deck mounting sockets and carbon fibre poles
- Cockpit privacy screen
- Custom low deck layout with three cabins and wardrob in place of the STBD cabin with

bathrooms modification

PRINCESS X95 (018)

Price on application

+33 6 40 61 88 46 

m.st.pierre@princessyachtsmonaco.com

Follow Princess Yachts Monaco

