



Y80

The versatility of the Y80 sets it apart from its contemporaries. Offering a generous beam, the Y80 provides significant volume for an 80-foot motor yacht whilst retaining elegant styling and design both inside and out.

Her flybridge offers relaxed seating and dining areas combined with a fully equipped wetbar. Owners' can choose to specify the flybridge layout to their requirements with the option of a crane for a tender hidden within the large sunpad, free standing sun loungers or a spa bath.

The foredeck has been designed to offer a secluded escape to while-away an afternoon or an elegant entertaining space to sip cocktails with guests. A conversationalist seating area can easily accommodate 10 people, with adaptable forward and aft facing U-shaped seating which can convert to offer a spacious sunpad.







The main deck offers an uninterrupted flow through from the cockpit to the helm featuring vast windows along the saloon to experience the surrounding panoramic views. For owner's who prefer a more private experience, optional partitions to the galley and wheelhouse are available.

Below deck, four en-suite cabins sleep eight supported by crew quarters.







Experience the Y80





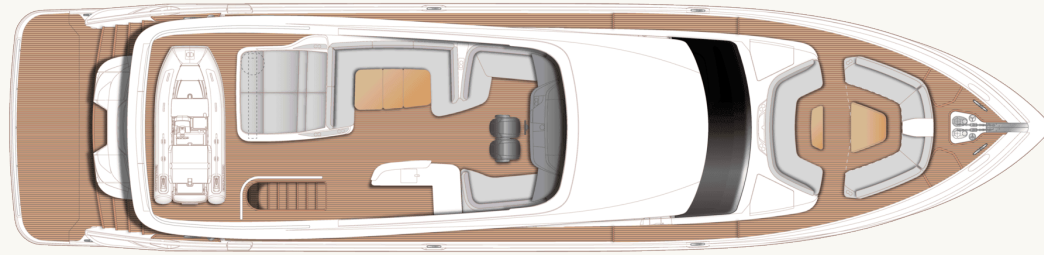
Take a virtual tour of the Y80



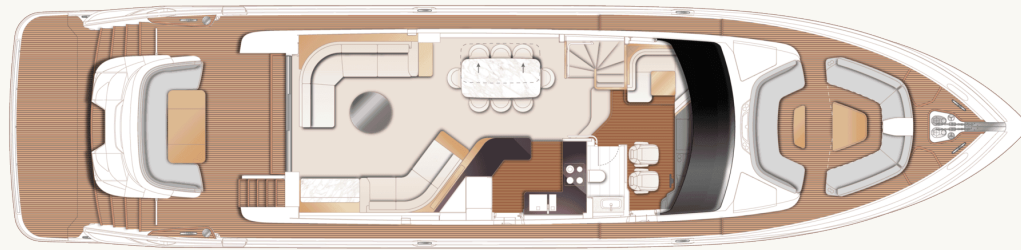


# Y80

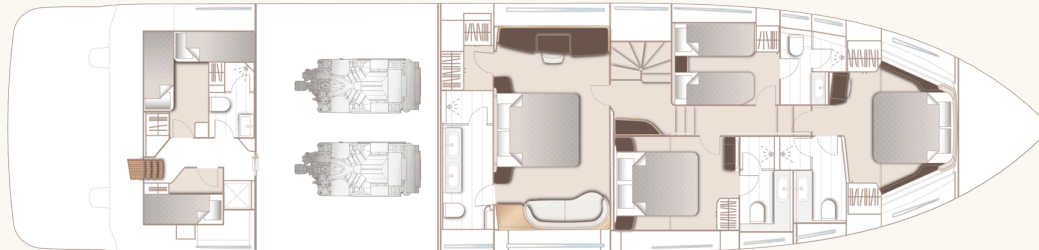
## Layouts and Specifications



Y80 Flybridge



Y80 Main Deck



Y80 Lower Deck

## Principal Dimensions

Length overall (incl. pulpit)	83 ft 8 in / 25.50m
Length overall (excl. pulpit)	82 ft 5 in / 25.11m
Beam	19 ft 11 in / 6.07m
Draft	5 ft 10 in / 1.80m
Displacement approx.	61,547 kg / 135,688 lbs*
Fuel capacity	1,540 gal / 1,849 US gal / 7,000 l
Water capacity (excl. calorifier)	326 gal / 391 US gal / 1,480 l
Black water tank	119 gal / 143 US gal / 540 l

## Engines - Diesel

Twin MAN V12-1800 (2 x 1,800mhp)	Maximum speed range - 30-32 knots <sup>†</sup>
Twin MAN V12-1900 (2 x 1,900mhp)	Maximum speed range - 31-33 knots <sup>†</sup>

## Full Specification

### Deck fittings

- 6mm teak-laid decking to transom platform, transom steps, cockpit deck, stairway to flybridge, side decks, foredeck & flybridge areas
- Princess logo in bathing platform teak
- Reversible hydraulic anchor winches with foredeck, main helm and flybridge controls
- Stemhead roller with automatic anchor launch and retrieve
- Twin anchor system incorporating:
  - Primary anchor - 80kg galvanised Lewmar Claw anchor, with stainless steel Lewmar swivel and 100m of 14mm galvanised anchor chain
  - Secondary anchor - 50kg galvanised Lewmar Claw anchor, with stainless steel Lewmar swivel and 70m of 14mm galvanised anchor chain
- Deck chain stoppers
- Twin electric stern line mooring winches
- Deck hatch access to chain locker, rope locker and engine room
- Freshwater deck/anchor wash (with both fore and aft deck outlets)
- Stainless steel bow and stern fairleads
- Stainless-steel bow spring cleats (1 pair, port & starboard)
- Stainless-steel stern spring cleats (1 pair, port & starboard)
- Stainless-steel guard rails to foredeck
- Stainless steel handrails to main deck side decks
- Foredeck escape hatch
- Foredeck forward-facing U-shaped seating area
- Foredeck aft-facing U-shaped seating area with storage unit and standard coffee table
- Twin coach roof lockers for storage of fenders, ropes and cushions
- PVC rubbing band with stainless-steel insert
- LED deck level lighting
- Full set of IMCO navigation lights
- Riding light
- Twin beam searchlight with remote controls
- Stern docking lights
- Twin electric horns
- Fuel and water fillers
- Loudhailer
- Ensign socket and pole
- Holding tank dockside discharge connection

### Aft cockpit and bathing platform

- Self-draining
- Upholstered U-shaped seating with storage below
- Teak folding dining table with drink holders (4)
- LED overhead and deck level lighting
- Stainless-steel oval handrails
- Remote control 4.5m telescopic passerelle with automatic folding handrails (1.2m overhang)
- Watertight pantograph door giving access from bathing platform into crew area/engine room
- Engine room to cockpit escape hatch
- Stern lazarette
- Starboard locker containing remote fuel cocks, manual bilge pump with valve chest and manual controls for automatic fire extinguishers
- Integral stairway to flybridge with teak step

treads

- Twin transom gates leading to bathing platform
- Electro-hydraulic teak laid raise/lower bathing platform (550kg SWL) with Princess logo in bathing platform teak
- Retractable bathing ladder (manual) in side of bathing platform
- Hot and cold transom shower
- 220/240v shore support inlet
- Canvas cockpit cover
- Swim platform transom seat in teak
- Dinghy chock system stainless steel keyway plates for later fitting of tender on bathing platform
- Illuminated crown logo on transom

#### **Lower helm**

- Leather upholstered seat with manual height adjustment and manual fore and aft adjustment.
- Fixed navigator's seat - manual fore and aft
- Helm seats incorporate manual fold down foot rest
- U-shaped companion seating to port with dining-height table
- Instrument console with display incorporating

engine instruments, optional CCTV, fuel gauges, alarms and rudder position indicator

- Dual station instrument and controls console at wheelhouse/flybridge:
  - power-assisted electro-hydraulic steering (Seastar)
  - adjustable Pininfarina steering wheel
  - high-speed magnetic compass
  - electronic engine controls
  - bow thruster control
  - hydraulic anchor winch remote control
  - colour radar (with scanner) and GPS/chart plotter (twin 15.6" displays)
  - 1x 15" Böning display
  - audible and visual alarm engine warning system
  - autopilot
  - speed and distance log
  - echo sounder with alarm
  - VHF with DSC R/T with intercom
  - remote control dual searchlight
  - horn button (to operate twin electric horns)
  - audible and visual alarm for bilge pumps (via Böning)
  - engine room fire extinguisher warning system
- Automatic fog horn with loudhailer
- Chart storage

- Drink holders (2)
- Toughened glass screen (clear for night vision) with windscreen de-mist system
- Windscreen wipers with freshwater windscreen wash
- Black mesh sunscreens
- Bilge pump controls with visual pump running warnings
- 24v and 240v electrical control panel
- Riding light, helm and navigation light control switches
- Dimmable LED overhead/concealed lighting (24V) with night lighting & scene selection
- 220/240v outlets (1)
- USB charging points (4) (2x USB-A and 2x USB-C)
- Watertight pantograph door giving direct access from starboard side deck
- Electric drop window to port
- V-groove planked timber-laid flooring

#### **Flybridge (and upper helm)**

- Dual station instruments and controls (see lower helm position)
- Helm position

- Drinks holders (2)
- Port forward L-shaped seating (with infill panel and cushion)
- Large portside U-shaped upholstered seating
- Aft sunpad with drinks holders (2) (with storage forward and storage aft suitable for optional crane)
- Starboard forward seating/individual sunpad
- Dining table (teak, triple panel with removable central section)
- Wetbar with single electric barbecue/100 litre refrigerator/sink/storage/bin
- Naim Uniti Atom audio system with JL Audio M6-650X-L waterproof speakers (2)
- Clear view hatch to aft cockpit (in-house)
- Wind deflector screens
- Access stairway to aft cockpit
- Stainless-steel oval handrails with glass balustrade & teak capping to aft of flybridge deck
- Life raft stowage in baskets on flybridge aft rails
- LED overhead and deck level lighting
- Wireless waterproof phone charger
- GRP forward facing radar arch
- Radar mast
- Twin matching whip aerials for VHF R/T and

radio

- Covers to console/exterior furniture

### **Deck saloon**

- Large L-shaped curved sofa to portside, with storage below
- Sofa to starboard with storage below
- Coffee table
- 55" LED TV on rise and fall.
- Naim Uniti Atom audio system. Paired with Focal 100 ICW6 speakers (2) and Focal Cub Evo subwoofer
- Panoramic tinted toughened glass windows port and starboard
- Triple stainless-steel framed cockpit doors
- Dimmable LED overhead/concealed lighting (24V) with scene selection
- 220/240v outlets (2)
- USB charging points (4) (2x USB-A and 2x USB-C)
- Onboard ethernet router & 4G internet modem
- Sideboard unit to starboard with integrated drinks refrigerator, glassware storage & top down bottle storage. Sideboard unit has a warm grey porcelain top

- Crockery storage (beneath starboard sofa)
- Manual sheer roller blinds to all outboard windows
- Manual curtains on wave track to aft patio doors, stowed to port
- Fitted carpet

### **Dining area**

- Electric sliding dining table with 8 dining chairs. Dining table has a warm grey porcelain top.
- Full-height window to port
- Manual sheer roller blind to window
- Dimmable LED overhead/ concealed (24V) with scene selection
- Access stairway to lower accommodation
- Fitted carpet

### **Galley**

- Granite/quartz counter top
- Galley units in HPL
- Miele 4-zone induction hob
- Hob extractor fan
- Miele combination convection oven with grill/microwave

- Sub-zero single full height refrigeration units with deep freeze drawers
- Slimline dishwasher
- 1.5 bowl stainless-steel sink with mixer tap
- Chopping board & storage
- Waste bin
- High and low-level storage cupboards and drawers
- Cutlery storage
- Watertight pantograph access door to starboard side deck
- 220/240v power outlets (4)
- Dimmable LED overhead & task lighting (24V)
- Manual roller blinds to windows
- V-groove planked timber-laid flooring

#### **Day head**

- Electric freshwater toilet
- Wash basin and vanity top in thermoformed Solid Surface
- Storage cupboard
- Manual tension Venetian blind
- Solid Surface flooring

#### **Accommodation**

- All cabins and bathrooms feature opening portholes and air conditioning
- All cabins feature 220/240v power points
- All en-suites feature 240v shaver points

#### **Owner's stateroom**

- Large double bed with bedside tables and drawers below
- Dressing area with full length mirror, hanging, shelf and drawer storage
- Built-in safe
- Port side dressing table with integrated mirror, chair, storage drawers and cupboards
- Starboard side sofa with storage drawers to forward bulkhead (As per X80)
- 55" LED TV
- Naim Uniti Atom audio system. Paired with Focal 100 ICW6 speakers (2) and Focal Cub Evo subwoofer
- Panoramic windows including opening portholes
- Manual roman blinds to hull windows
- Dimmable LED overhead/concealed lighting (24V) with scene selection
- 220/240v outlets (2)
- USB charging points (4) (2x USB-A and 2x USB-

- C)
- Fitted carpet

#### **En-suite bathroom**

- Twin wash basins and vanity top in thermoformed Solid Surface
- Mirror
- Storage lockers
- Electric freshwater Toilet
- Shower compartment with automatic pump out
- Extractor fan
- Heated towel rail
- Window with opening porthole
- Manual tension Venetian blind
- LED overhead and concealed lighting (24V)
- Bathroom accessories
- Solid Surface flooring, with synthetic teak accents (weathered) applied to feature shower bulkheads and shower floor

#### **Forward stateroom**

- Large double bed with bedside tables and drawers below
- Built-in safe



- Twin double wardrobes
- Port side dressing table with integrated mirror, stool & storage drawers
- 43" LED TV
- Naim Uniti Atom audio system. Paired with Focal 100 ICW6 speakers (2)
- Panoramic windows including opening portholes
- Manual Roman blinds to hull windows
- Dimmable LED overhead/concealed lighting (24V) with scene selection
- 220/240v outlets (2)
- USB charging points (4) (2x USB-A and 2x USB-C)
- Fitted carpet

#### En-suite bathroom

- Wash basin and vanity top in thermoformed Solid Surface
- Mirror
- Storage lockers
- Electric freshwater Toilet
- Shower compartment with automatic pump out
- Extractor fan
- Window with opening porthole
- Manual tension Venetian blind

- LED overhead and concealed lighting (24V)
- Bathroom accessories
- Solid Surface flooring, with synthetic teak accents (weathered) applied to feature shower bulkheads and shower floor

#### Starboard guest cabin

- Double bed with drawers below
- Bedside table
- Dressing table with stool
- Wardrobe with shelves
- Mirror
- Storage lockers
- Window with opening portholes
- Manual Roman blinds to hull window
- Dimmable LED overhead/concealed lighting (24V) with scene selection
- Individual berth lights
- 220/240v outlets (1)
- USB charging points (2) (1x USB-A and 1x USB-C)
- Fitted carpet

#### En-suite bathroom

- Electric freshwater toilet
- Wash basin and vanity top in thermoformed Solid Surface
- Mirror
- Storage lockers
- Shower compartment with automatic pump out
- Extractor fan
- Windows with opening porthole
- Manual tension Venetian blind
- LED overhead and concealed lighting (24V)
- Bathroom accessories
- Solid Surface flooring, with synthetic teak accents (weathered) applied to feature shower bulkheads and shower floor

#### Port guest cabin

- Two single beds with drawers below
- Bedside table
- Wardrobe with shelves
- Mirror
- Storage lockers
- Window with opening portholes
- Manual Roman blinds to hull window
- Dimmable LED overhead/concealed lighting (24V) with scene selection

- Individual berth lights
- 220/240v outlets (1)
- USB charging points (2) (1x USB-A and 1x USB-C)
- Fitted carpet

#### En-suite bathroom

- Electric freshwater toilet
- Wash basin and vanity top in thermoformed Solid Surface
- Mirror
- Storage lockers
- Shower compartment with automatic pump out
- Extractor fan
- Windows with opening porthole
- Manual tension Venetian blind
- LED overhead and concealed lighting (24V)
- Bathroom accessories
- Solid Surface flooring, with synthetic teak accents (weathered) applied to feature shower bulkheads and shower floor

#### Lobby / passageway area

- Linen cupboard below companionway stairs

- Top-loading storage unit outboard in window side liner
- Sideboard with mirror above
- Space for optional combination washer/dryer below companionway stairs
- LED overhead/concealed lighting (24V)
- Fitted carpet
- Manual roller blind to window

#### Crew quarters

- N.B. All lower crew furniture is in gloss white laminate, with Koko White Solid Surface (gloss finish) bathroom vanity tops and Koko White Solid Surface (satin finish) bathroom floors

#### Crew cabin port

- Twin single beds with storage below
- Wardrobe with shelf
- Mirror
- Storage lockers
- Opening portholes (2, port and aft)
- Mono-command Venetian blinds
- LED overhead lighting (24V)
- Individual berth light

- 220/240v outlets (1)
- USB charging points (2) (1x USB-A and 1x USB-C)
- Non-slip safety flooring

#### Crew cabin starboard

- Single bed with storage below
- Wardrobe
- Mirror
- Storage locker
- Opening porthole
- Mono-command Venetian blind
- LED overhead lighting (24V)
- Individual berth light
- 220/240v outlets (1)
- USB charging points (2) (1x USB-A and 1x USB-C)
- Non-slip safety flooring

#### Crew bathroom

- Electric freshwater toilet
- Wash basin with Koko White (gloss finish) Solid Surface vanity top
- Mirror

- Storage lockers
- Shower compartment with automatic pump out
- Extractor fan
- LED overhead lighting (24V)
- Bathroom accessories
- Solid Surface flooring in Koko white (satin finish)

### Crew area

- Access from transom door
- Access to engine room
- Washing machine and separate tumble dryer (stacked)
- LED overhead lighting (24V)
- Non-slip safety flooring

### Power and drive systems

- Forward and aft engine room bulkheads and engine room deck head to be integrally bonded including insulation with acoustafoam layers (Ref: Development Standard DS876)
- High volume air intakes
- Engine room extractor fan with electronic time delay
- Engine exhaust silencers and water-cooled

- exhausts
- Engines flexibly mounted
- Automatic fire extinguisher with remote override control
- Automatic and manual bilge pumps
- Propeller shafts in Marinemet
- 5-bladed propellers in nickel aluminium bronze
- High speed balanced rudders
- Cathodic protection for stern gear
- Stern gear, engines, fuel tank fillers, etc all electrically bonded
- LED Engine room lighting
- Engine room access from transom (via crew area) and cockpit deck hatch
- Power-assisted electro-hydraulic steering system
- Electronic engine and gear shift controls
- Bow thruster with dual-station controls (310 Kg)
- Fresh water supply point in engine room
- Dripless self-aligning shaft seals
- Princess Connect telemetry and maintenance system

### Electrical systems

24 Volt:

- 4 x heavy duty batteries for engine starting
- 6 x heavy duty auxiliary batteries
- 2x heavy duty batteries for standard generators
- Battery link facility with remote control at helm position
- Both battery banks are charged using a voltage sensitive relay that parallels both battery banks when a charging source is present
- 1 x 100A charger, 1x 100A-3500W charger/inverter & 1x 10A charger (for generator batteries)
- Remote battery isolator control switches at main switch panel position
- Circuit breakers on all circuits
- 24v to 12v converters for certain navigation and radio circuits
- 24v to 240v/50Hz inverter for saloon a/v and galley fridge
- Galvanic isolation system
- Princess Connect telemetry and maintenance system

220/240 Volt:

- European specification: Standard 2x 27kW @ 50Hz diesel generators (with optional upgrades

- up to 2 x 28kW @ 50Hz diesel generators) in own sound shields, water cooled and with specially silenced exhaust systems and with remote operation from main control panel
- USA specification: Standard 2x 29kW @ 60Hz diesel generators (with optional upgrades up to 2 x 32kW @ 60Hz diesel generators) in own sound shields, water cooled and with specially silenced exhaust systems and with remote operation from main control panel
- 220/240v shore power inlet (2x 63amp single phase)
- Shore power/generator change over control operated from main control panel
- Polarity check system
- Earth leakage safety trip, circuit breakers on all circuits
- Power points (240v) in all cabins and living areas, helm position and galley
- 240v shaver points in washrooms
- 2kW immersion heaters for fresh water (2)

#### **Fuel system**

- Main fuel tank with a total of 7,000 litres fuel capacity. (8,800 litres total if long range fuel

tank is specified)

- Fuel fillers to port and starboard
- High capacity duplex fuel filters/water traps with integral changeover valves and water sensors connected to alarms at helm position
- Remote fuel isolation controls in cockpit locker for main engines and generators
- Fuel gauges at helm position

#### **Air conditioning system**

- Air Conditioning/heating reverse cycle (chilled water)
- 186,000 BTU fan capacity with 144,000 BTU chiller capacity suitable for temperatures to 40°C (tropical), incorporating a windscreen demist facility.
- Outlets in all areas

#### **Water system**

- Fresh water tanks giving 1400 litres capacity plus 200 litres hot water calorifier
- Automatic water pump with filter (80l/min)
- Water level gauge
- Deck filler

- Pump control at helm positions
- Electric freshwater toilet system linked to 540 litres black water tank, content gauge and low noise electric overboard discharge, with macerator backup system as well as dockside discharge system
- As standard, sinks, showers, washing machine(s) and dishwasher will discharge directly overboard (where applicable)

#### **Bilge pumps**

- Automatic/manual override electric bilge pumps in engine room, rudder area and forward accommodation
- High capacity manual bilge system with suction points in the same areas
- Electric bilge pumps have controls and warning lights with audible alarm at helm positions

#### **Extinguishers / fire control systems**

- Automatic engine room fire extinguisher system (with manual override) and warning system at helm positions providing automatic shutdown of engines, generators and ventilation fans

- Hand operated fire extinguishers in all guest cabins, galley, crew quarters and flybridge
- Automatic under helm fire extinguisher at lower helm

#### **Other standard equipment**

- Ensign staff
- Fenders (8)
- Mooring warps (4)
- First Aid kit
- Set of towels (8 large, 8 hand)
- Bed cover supplied to all cabins (except crew cabin)
- Complete set of Lucrezia crystal glassware (8 settings consisting of tumbler, highball and wine glasses)
- Set of Sous Le Soleil crockery (8 settings consisting of plate, cake plate, dessert plate, bowl, cup & saucer)
- Set of stainless-steel cutlery (8 settings of David Mellor "Paris" cutlery 7 pieces)
- Tool kit
- Boat hook
- Owner's manual and engine manual
- Ship's document case

#### **Finishes**

- Teak-laid decks to all external deck areas (including flybridge)
- V-groove planked timber-laid floor to galley and wheelhouse
- Furniture in Rovere oak satin finish as standard (Silver oak satin finish, Ash satin finish or Walnut in satin or gloss finish are available as an option)
- Solid Surface floors in all bathroom suites in guest accommodation (including day head)
- Thermoformed Solid Surface wash basin vanity tops in all bathroom suites and day head
- Synthetic teak accents (weathered) applied to feature shower bulkheads and shower floor
- Galley counter top in granite or quartz
- Choice of high-quality carpets and fabrics from extensive range
- Exterior upholstery to be selected from the Comfort Exterior fabric range (no contrast)
- Curtains or blinds to all windows and portholes (excludes lower helm and pantograph doors)
- All lower crew furniture is in gloss white laminate, with Solid Surface bathroom floors and vanity tops
- Crew cabins to have non-slip safety flooring

- Non-slip safety flooring to crew mess and passageway