

SANLORENZO 88

2 850 000 € (inc VAT)



BROKERAGE

HIGHLIGHTS

- / PERFECTLY MAINTAINED
- / 4 CABIN LAYOUT
- / WATERMAKER
- / 2 GENERATORS
- / HYDRAULIC GANGWAY
- / ELECTRO-HYDRAULIC TRANSOM PLATFORM
- / TV/AV EQUIPPED
- / ZERO SPEED STABILIZERS
- / CCTV
- / WILLIAMS TENDER
- / RELIABLE CAT ENGINES

SPECIFICATIONS

Location	Monaco	Cabins	4
Year	2010	Berths	9
Length	26.75 m	Engines	Caterpillar C32 DITA
Beam	6.75 m	Max power	2 x 1902 hp
Draft	2.15 m	Max speed	28 +
Fuel capacity	12000 l	Engine hours	1200 m/h
Water capacity	3000 l	Price	2 850 000 € (inc VAT)

EQUIPMENT

Kohler generators, 1x33 kw + 1x27 kw

Condaria air conditioning

Hydraulic bow thruster

Hydraulic stern thruster

230 lt / h water maker

Retractable hydraulic gangway

Air compressor

Mitsubishi Zero Speed stabilizers

System Hamman black water purification

Infrared anti-intrusion system -

Fire -fighting system

Closed circuit TV system with cameras in the engine room and stern, monitor on the bridge,

GSM telephone

system - Mobile on flybridge with Miele electric plate, mini bar and sink

Electro-hydraulic crane on flybridge

Williams tender with hydrojet engine

Teak on the flybridge

Rigid bimini

Third maneuvering station aft

Underwater lights (6)

Two anchor winches with mooring bells and chain counter (fly and bridge)

Mooring winches aft

Mini Black communication satellite antenna

Satellite TV antenna

N. 7 LCD TV with 7 decoders, CD and DVD

LED lighting with dimmer

Miele coffee machine with built-in coffee grinder

Refrigerated wine cellar

Ice maker

Additional fridge / freezer

Miele washing machine and dryer (professional)

Total winter and summer closure for the cockpit

Two Raymarine G170 monitors

Radar

Autopilot

GPS / plotter

Wind station

2 VHF

SSB

Ecosonde

On-board computer

Caterpillar engine control monitor

Intercom system

INTERIOR DESCRIPTION

Living room with "L" -shaped sofa, armchair and low table, opposing cabinet

Dining area with table and eight chairs

Daily service bathroom

Large kitchen with 75 cm induction hob, fridge / freezer column, double electric oven,

microwave oven, dishwasher, waste compactor, crew dinette and ladder down to the crew

Raised wheelhouse with dinette.

LOWER DECK:

Owner cabin amidships with double bed, double bathroom with shower

A double cabin with twin beds + foldaway third bed, bathroom with shower

A double guest cabin currently used as an office, bathroom with shower

VIP cabin forward with double bed, bathroom with shower

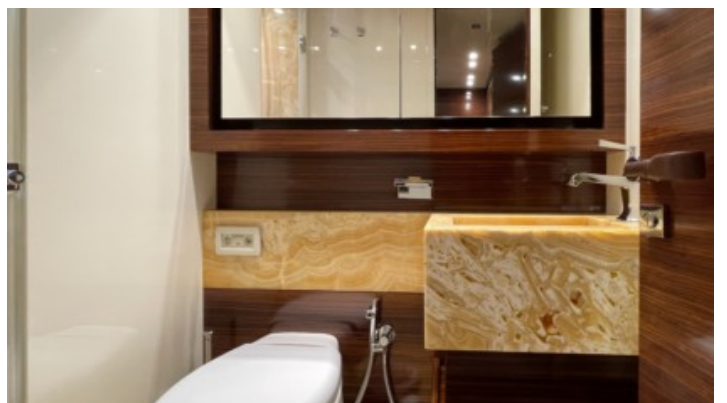
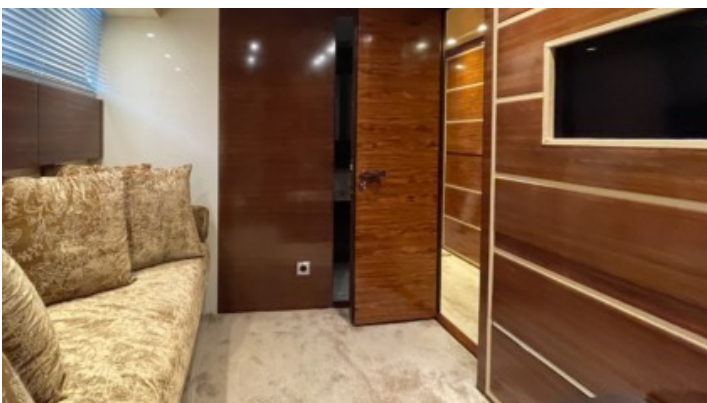
Rosewood interiors, leather sofas, parquet flooring on the day deck

CREW:

Two double cabins with bunk beds, two bathrooms

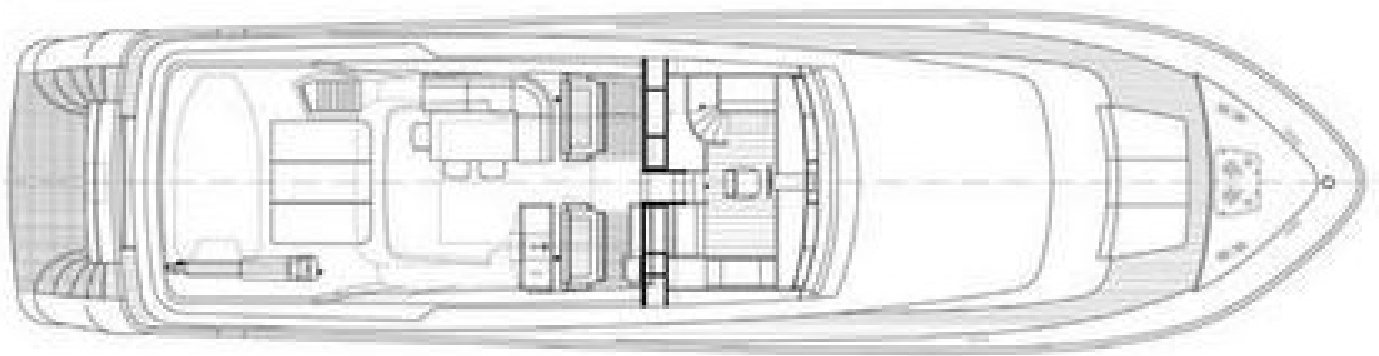
EXTERIOR



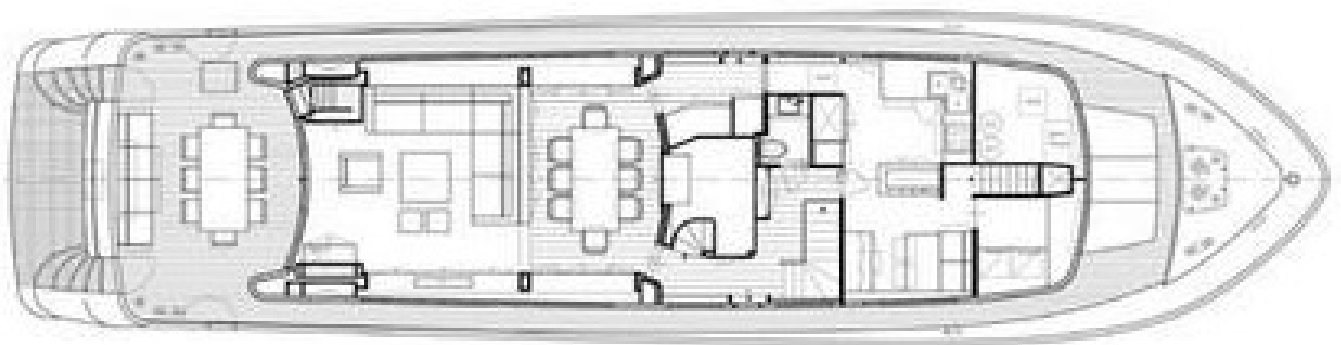




LAYOUTS



FLYBRIDGE



MAIN DECK



LOWER DECK
